



AUSTRALIA | CANADA | CHINA | INDIA | MALAYSIA | USA



Find Your Future

Transform yourself. Experience a world of possibilities with ELS.

Study English. Explore. Succeed.

Making the decision to find your passion and learn about yourself is one of the greatest things you can do for your future. Your journey to self-discovery begins here, at ELS. We can help you achieve your dreams, find yourself, and find your future. As you journey toward your goals, you will make new friends from all over the world, learn from them, and stay in touch with them after you graduate. You will become part of the international job market and have networking opportunities that you never even knew were possible. Find your future with our first-rate English language instruction programs at some of the world's most prestigious universities.

GET STARTED TODAY!
VISIT [ELS.EDU/BIGPICTURE](https://els.edu/bigpicture)

TABLE OF CONTENTS

GET TO KNOW ELS

- 1 Overview
- 2 Our Students and Parents Say It Best: ELS Works
- 4 The ELS Advantage
- 6 Find Your Program
- 8 ELS Classes and Levels
- 10 The ELS Direct-Entry Pathway
- 12 The ELS Community College Pathway

ACADEMIC ENGLISH PROGRAMS

- 15 English for Academic Purposes (EAP)
- 16 The ELS University Early Admission Program
- 16 Concurrent University Enrollment for Credit
- 17 The ELS University Certificate Program
- 18 University Degrees That Offer Work Experience in the U.S.A.
- 20 ELS FastTrack®
- 21 Teacher Training
- 22 The ELS University Guide Online
- 22 Scholarship Counseling
- 23 ELS University Admission Services
- 23 Complete Prep Program for the TOEFL iBT®

GENERAL ENGLISH PROGRAMS

- 25 General English
- 26 Semi-Intensive English
- 27 American Explorer

BUSINESS COMMUNICATION PROGRAMS

- 28 Business English
- 29 English for Executives
- 29 Super-Intensive English & Super-Intensive English Plus

YOUTH AND YOUNG ADULT PROGRAMS

- 31 Youth Camp Programs – U.S.A.
- 31 University Preparation Programs – U.S.A.
- 32 Summer in New York City – U.S.A.
- 33 Nike Sports Camps – U.S.A.
- 34 Canadian Summer and Winter Youth Programs – Vancouver, British Columbia
- 35 High School Preparation – Sydney, Australia
- 35 Junior Holiday English Program – Sydney, Australia

CENTERS

- 36 Find Your Home Away From Home
- 37 ELS Housing Options
- 38 Find Your Location
- 39 ELS Locations in the United States
- 103 ELS Location in Australia
- 104 ELS Locations in Canada
- 106 ELS Location in China
- 107 ELS Location in India
- 108 ELS Locations in Malaysia
- 110 ELS Location in Panama
- 111 ELS Locations in Saudi Arabia
- 112 A World of Options Awaits You
- Back Map of ELS Global Locations

Reach
Your
Dreams
With ELS

ELS INTERNATIONAL PATHWAYS®

English proficiency can open doors to so many opportunities. Learning and developing strong English language skills will be the key to reaching your educational, career, and life goals.

ELS offers a variety of programs to help you gain the English proficiency you need and to guide you on your path to success. You will experience new languages, cultures, people, and places as you begin this journey!



**PREPARE FOR SUCCESS.
BEGIN YOUR ADVENTURE HERE.
VISIT [ELS.EDU/BIGPICTURE](https://els.edu/bigpicture).**

"I decide study at ELS/Philadelphia – Camden because is the best option to learn English. In my opinion Rutgers University–Camden is amazing because it has great facilities, friendly people, a secure campus, and buildings in good condition. I think that it's an incredible experience living on campus because you can live in and enjoy an American university lifestyle. My favorite memory was when I visited the Philadelphia Art Museum, because the museum was amazing and I met new people there. The teachers are professionals in their work. They listen to opinions. They do a lot of activities in the classroom, and they are so friendly. I participated in student activities. I think that the student activities is the best part to study in the United States because you can put in practice your English with native speakers. I would definitely recommend ELS/Philadelphia – Camden, because you can learn and have fun at the same time."

– Willians, Mexico

"ELS/Atlantic City is a great Center which I highly recommend. Teachers here are pretty nice. They will help you with whatever you want. The most important thing is they also care about your life and try their best for you. Especially as a foreign student, we have lots of things to learn and they will help you a lot. Also, the Center is located in a university where you will make American friends to help you improve your English!"

– Tongtong, China

Our Students and Parents Say It Best: ELS Works

"Going to ELS was the best decision I could have ever made. I studied at ELS/Boston – Downtown for seven months and it was just amazing. It wasn't easy for me to start a new life far away from my home, but ELS helped me and made it easy for me. I was 17 years old when I arrived alone to Boston, and now I'm leaving with many friends around the world. I completed my English course successfully with the help of my excellent teachers, my kind classmates, and all the ELS staff who helped me improve my English every day. ELS not only taught me English, but also gave me the opportunity to join and enjoy the different activities and trips that they organized for us. I'm in love with this spectacular city. Boston is my second home and I'm never going to forget it. I really enjoyed every single day of this experience. Thank you to everyone who made it possible."

– Valeria, Venezuela

**FIND OUT WHAT ELS STUDENTS HAVE TO SAY!
VISIT [ELS.EDU/STORIES](https://els.edu/stories).**



"Before I came here, I didn't like English, but I really like it now. I recently wished I didn't have to go back to Japan because I have made a lot of good friends since I came here. I still want to try conversation with native speakers and other students. After graduation, I'm going to university in Japan, and then I'll get a preschool teaching license. My dream is to teach English to children. I hope that the children I teach will try to have good conversations with native speakers and they will get an experience for their future."

– Kosuke, Japan

"I have been living in Milwaukee for four months now. Originally I'm from Munich, Germany, and I decided to come to Milwaukee to attend classes at ELS to improve my English. After finishing ELS Level 112, I would love to work in an international setting. I do love Milwaukee, not only because it is located at Lake Michigan and it is so close to Chicago, but also because it's a great city with lots of historic sites and great neighborhoods to explore. ELS is an excellent language school with teachers who will do everything to help you improve your language skills. Everybody at ELS, the teachers as well as the administrative staff, are always willing to help with any needs or requests to make your stay an unforgettable one."

– Christina, Germany

"The first day I came to ELS/Lubbock, I saw how a language institution like this would be a place where I could build my academic skills and be ready to start my academic life. ELS staff have been doing their best to come up with new strategies to help English learners to develop and enrich their English skills. My days there were an experience I will not forget."

– Mohammed, Saudi Arabia

**DON'T FORGET TO CHECK OUT ELS'S
FACEBOOK, TWITTER, INSTAGRAM AND YOUTUBE ACCOUNTS.**

The ELS Advantage



WHY CHOOSE ELS?

ELS puts YOU first. No one else can match the choices and experts we have.
Our focus is your success, and we can guide you there.

Find the perfect program to help you reach your goals

We will work with you to help you decide.

Study in your ideal setting

ELS has the largest network of campus locations in the world. Big cities, small towns, rural atmospheres, rich cultures, and exciting social activities await you.

Learn from the experts

Our teachers are among the best in the industry in English language instruction. Most of our teachers hold advanced degrees.

Access the best resources and materials

Our textbooks and materials are exclusive to ELS and were created by top authors in English language instruction. We will also make sure that your specific learning needs are met through technology and practice.

Get ready to take your English proficiency test

We are one of the largest providers of TOEFL iBT® testing in the United States. All year-round ELS locations in the USA are official TOEFL® testing centers. You will also have exceptional preparation with the ELS Complete Prep Program for the TOEFL iBT®.

ELS also offers the following:

- IELTS™ testing
- TOEIC® testing
- Home country, pre-arrival language proficiency testing

Prepare for your journey before you leave home

Before you even master the English language, you can apply for conditional admission. Once you graduate from ELS you can enter the university of your choice.

How does conditional admission work?

You will:

1. Work with ELS University Admission Services to find and apply to the university you choose.
2. Receive a conditional letter of admission from the university if you meet all of their requirements. Your admission is subject to meeting the required ELS English proficiency.
3. Successfully complete Level 109 or Level 112 of the ELS English for Academic Purposes program.*

For more information, visit [ELS.edu/HowToApply](https://www.els.edu/HowToApply).

* Some universities even allow you to take courses for credit as you complete advanced levels of the ELS English for Academic Purposes program



1.2

million students from
143 countries have
attended ELS

Find Your Program



ACADEMIC ENGLISH PROGRAMS

See pages 14 – 23 to learn more

If you want to attend a college or university, you can complete Level 109 or 112 of the English for Academic Purposes (EAP) program. You will earn an official certificate that is accepted by more than 650 colleges and universities worldwide. The certificate confirms that you have achieved the English language level of proficiency required for admission.

English for Academic Purposes (EAP)

ELS University Early Admission Program

Concurrent University Enrollment for Credit

ELS University Certificate Program

University Degrees That Offer Work Experience in the U.S.A. (Co-ops and Internships)

Complete Prep Program for the TOEFL iBT®

GENERAL ENGLISH PROGRAMS

See pages 24 – 27 to learn more

Choose our General English program to develop listening, speaking, reading, and general communication skills. The Semi-Intensive English and American Explorer programs offer classes in the morning and allow you to practice your skills in your local surroundings.

General English

Semi-Intensive English

American Explorer

Ready to Get Started?

You can contact an ELS authorized Counselor to help you and your family make the best decision, download an application from our website, or, for U.S.A. programs, apply directly online.

Visit [ELS.edu/HowToApply](https://www.els.edu/HowToApply).

BUSINESS COMMUNICATION PROGRAMS

See pages 28 – 29 to learn more

Advance your career with Business Communication programs that help you build your English proficiency and achieve the next level of professional success!

Business English

English for Executives

Super-Intensive English

Super-Intensive English Plus

YOUTH AND YOUNG ADULT PROGRAMS

See pages 30 – 35 to learn more

ELS programs for children and young adults provide great experiences and opportunities for children of all ages. They are engaged in English language study and practice throughout the experience and will have fun while doing it!

Youth Camp Program – U.S.A.

University Preparation Program – U.S.A.

Summer in New York City – U.S.A.

Nike Sports Camps – U.S.A.

Canadian Summer and Winter Youth Programs
– Vancouver, British Columbia

High School Preparation Program
– Sydney, Australia

Junior Holiday English Program
– Sydney, Australia

ELS Classes and Levels



Core Classes develop all the vital building blocks of English language proficiency.

Structure and Speaking Practice will teach you speaking, listening, grammar, and more.

Language Technology Centers allow you to focus on your specific needs and goals through technology.

Vocabulary Enrichment is a systematic approach to help you learn, use, and remember new vocabulary.

Reading and Writing will develop your reading comprehension while strengthening your writing fluency and accuracy.

Skills Enhancement Classes focus on improving a variety of language skills.

Skills Enhancement Classes (SECs) are available to English for Academic Purposes Masters-level students and to General English students at all levels.

Depending on location, SECs may include courses such as the following:

- Current Events
- Public Speaking
- American Slang
- Film Discussion

Offerings vary by location.

ELS LEVELS

ELS offers 12 levels of instruction to accommodate students of all abilities. All ELS Centers offer placement testing to help determine your level of proficiency and place you in the level that is the best fit for you.

You will learn the basics and foundations of the English language in the lower levels. As you progress through the levels, you will find more and more complexity in your courses.

Every four weeks, students who meet the requirements of their level will move up to the next level.

As you move through the levels, you will gain new opportunities through more challenging courses and through higher education options.

THE ELS LEVELS PROGRESSION

MASTERS

LEVEL 110

LEVEL 111

LEVEL 112

- Speaks and understands English with ease
- Reads and writes with sufficient proficiency to satisfy professional and university requirements
- Conducts business competently in English

Higher Education Option Upon Completion:

- Begin an undergraduate or graduate degree program

ADVANCED

LEVEL 107

LEVEL 108

LEVEL 109

- Communicates effectively in most social situations
- Understands a wide range of idioms
- Maintains extended conversations with native speakers
- Uses English with growing accuracy and fluency, including reading and writing
- Participates fully in most conversations

Higher Education Option Upon Completion:

- Enroll concurrently in some host university courses
- Enter a two-year college
- Begin a University Certificate Program at participating ELS locations

INTERMEDIATE

LEVEL 104

LEVEL 105

LEVEL 106

- Communicates facts and opinions
- Discusses and argues in a culturally acceptable way
- Understands most questions and statements at normal speaking speed
- Carries on conversations with native speakers
- Uses English to shop, order food in restaurants and ask for directions

Higher Education Option Upon Completion:

- Enroll in the Complete Prep Program for the TOEFL iBT® or Business English Program (available at select Centers)

BEGINNER

LEVEL 101

LEVEL 102

LEVEL 103

- Communicates at a basic level in everyday situations
- Understands English when spoken to slowly and clearly
- Understands a few words and phrases
- Responds to simple questions and directions

- These abilities and options apply to both English for Academic Purposes and General English.
- These abilities and options apply to English for Academic Purposes students, who receive more reading and writing as part of a balanced curriculum.

The ELS Direct-Entry Pathway



Four Steps to Enrolling in University Through ELS

If your English proficiency is not yet up to the level that colleges and universities require for admission, do not worry. Follow the four steps to university enrollment abroad through ELS without having to take the TOEFL® or IELTS™.

1

CHOOSE YOUR COLLEGE OR UNIVERSITY

We can help you make the best choice and plan the path you will take to get there. Once you choose your college or university, ELS University Admission Services can help you start the application process.

2

RECEIVE YOUR CONDITIONAL LETTER OF ADMISSION

Before you even leave home, you will receive a conditional letter of admission, which states that after you complete your ELS English for Academic Purposes (EAP) program, you will be qualified for admission to the university.

ELS MAKES IT EASY FOR YOU TO REACH YOUR HIGHER EDUCATION GOALS



AUSTRALIA

Universities

AE 4

Graduate Schools

AE 4



CANADA

Community Colleges

EAP LEVEL 109

Universities

EAP LEVEL 112

Graduate Schools

EAP LEVEL 112



INDIA

Universities

EAP LEVEL 109

Required

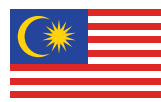
Universities

EAP LEVEL 112

Preferred

Graduate Schools

EAP LEVEL 112



MALAYSIA

Universities

EAP LEVEL 109

Graduate Schools

EAP LEVEL 109



UNITED STATES

Community Colleges

EAP LEVEL 109

Universities

EAP LEVEL 112

Graduate Schools

EAP LEVEL 112

Go to [UniversitySearch.com](https://www.universitysearch.com).

3

COMPLETE THE ENGLISH PROFICIENCY REQUIREMENT

Successfully complete Level 109 or 112* of the ELS English for Academic Purposes program at any of our 80+ ELS Centers in Australia, Canada, China, India, Malaysia, or the U.S.A. These levels' standards are accepted by over 650 partner colleges and universities worldwide.

*The Level 112 Certificate of Completion requires a minimum of 12 weeks of study as a student in the English for Academic Purposes program.

4

BEGIN YOUR LIFE AS A UNIVERSITY STUDENT!

You will submit your ELS EAP Certificate of Completion, which satisfies your university's English proficiency requirement. There is no need to take the TOEFL® or IELTS™. You will be a fully admitted student.

The ELS Community College Pathway

EARN A BACHELOR'S DEGREE WITH THE ELS COMMUNITY COLLEGE PATHWAY

Admission is often easier and tuition rates can be much lower

Community colleges can be a great way to take core college classes while paying a lower tuition rate than at four-year public or private universities. Also, admissions requirements to community colleges tend to be less demanding. The credits you earn at a community college will easily transfer to four-year public or private universities with which community colleges have transfer agreements. ELS has pathway programs to over 175 community colleges.



ELS Community College Pathway: Five Easy Steps

1

APPLY TO COMMUNITY COLLEGE

Plan your pathway. There are over 175 community colleges in the ELS network, so you are sure to find one that is perfect for you. ELS University Admission Services will help you through the application process.

2

RECEIVE YOUR CONDITIONAL LETTER OF ADMISSION

Before you even leave home, you will receive a conditional letter of admission, which states that after you complete the required level of your ELS English for Academic Purposes (EAP) program, you will be permitted admission to the college.

3

BECOME PROFICIENT IN ENGLISH AT ELS

Successfully complete Level 109 of the ELS English for Academic Purposes program to fulfill the community college's English proficiency requirement.

ELS COMMUNITY COLLEGE PATHWAY: EXAMPLES

Complete English for Academic Purposes Level 109 at ELS and your general education requirements at a community college, and transfer to a four-year public or private college or university to earn your bachelor's degree. The chart provides examples of the pathways from community colleges to four-year institutions:

LOCATION	TWO-YEAR COMMUNITY COLLEGE YEARS 1 & 2	FOUR-YEAR UNIVERSITY YEARS 3 & 4
CALIFORNIA	Foothill College and De Anza College Santa Rosa Junior College	University of California (10 campuses) California State University (23 campuses) University of Southern California
TEXAS	Alvin Community College Kilgore College St. Philip's College	Texas A&M University Texas Tech University The University of Texas at Dallas
NEW YORK	Herkimer County Community College SUNY Fulton Montgomery Community College	State University of New York (64 campuses) State University of New York Brockport University at Albany, State University of New York
COLORADO	Front Range Community College	Colorado State University University of Colorado Denver
WASHINGTON	Bates Technical College	University of Washington Washington State University System

Benefits to the Community College Pathway:

- Lower tuition
- Easier admission standards*
- Lower English proficiency requirements*
- Smaller classes and more individual attention
- Credits transferable to a highly ranked public or private university

Attend a community college for two years and then transfer in year three to a four-year public or private university and you could save up to \$50,000.**

For more information, visit

[ELS.edu/UniversityAdmissions](https://els.edu/UniversityAdmissions).

*Admission policies may vary by institution.

**Cost savings vary by state.

4

ATTEND THE COMMUNITY COLLEGE OF YOUR CHOICE

Complete the courses at your community college to earn transferable credit toward your bachelor's degree.

5

TRANSFER TO A FOUR-YEAR COLLEGE OR UNIVERSITY TO EARN YOUR BACHELOR'S DEGREE

Successful completion of your courses at a community college will allow you to easily transfer to a four-year institution. You could save up to \$50,000!***

Academic English Programs



ENGLISH FOR ACADEMIC PURPOSES (EAP)

The English for Academic Purposes (EAP) program is designed for students who want to attend a college or university outside of their home countries. This includes any student wishing to apply for conditional admission to any of ELS's 650+ partner institutions.

Through the EAP program, you will learn listening, speaking, reading, writing, pronunciation, and grammar skills. You will also get the skills you need to be successful in a university setting, including:

- Critical thinking
- Presentations/public speaking
- Note taking
- Academic research

Our morning classes consist of:

- Structure and Speaking Practice or Language Studies
- Vocabulary Enrichment (Levels 101 – 109) OR Skills Enhancement Classes (Masters Only)
- One lesson in our Language Technology Center (LTC)

Afternoon classes consist of reading and writing. For those studying in the U.S., Contact America! offers you many opportunities to meet with native English speakers and listen to English-speaking guest lecturers.

If you complete Level 112 and want to continue to study in Masters levels, you may do so. Our Masters curriculum gives you opportunities to challenge yourself and grow even more in your English proficiency without repeating any content you studied before.

- Three additional modules of content are available in the ELS Masters sequence
- Each offers a level for further challenge and potential growth

This level of study is available at all ELS Centers, as long as space in Masters classes is available.

Successfully completing Level 112 of the ELS English for Academic Purposes Program earns you a Certificate of Completion accepted as proof of English proficiency at more than 650 colleges and universities worldwide. Many two-year schools will accept Level 109.

ENGLISH FOR ACADEMIC PURPOSES PROGRAM COURSE DETAILS	
Number of levels	12 levels: 101 – 112 (Beginner to Masters)
Number of lessons per week	30 lessons (50 minutes per lesson)
Number of weeks for each level	4 weeks (each course covers 1 level)
Number of start dates annually	26 start dates
Maximum number of students per class	15 students in all classes except Skills Enhancement Classes, which may have 20 students. LTC seats students according to lab capacity.
Age requirements	Varies by Center and housing option. See application for details.
Program availability	All Centers

ENGLISH FOR ACADEMIC PURPOSES PROGRAM SAMPLE CLASS SCHEDULE				
	BEGINNER (101 – 103)	INTERMEDIATE (104 – 106)	ADVANCED (107 – 109)	MASTERS (110 – 112)
8:30 – 9:20	Structure and Speaking Practice	Structure and Speaking Practice	Language Technology Center	Skills Enhancement Class*
9:30 – 10:20	Structure and Speaking Practice	Structure and Speaking Practice	Vocabulary Enrichment	Language Technology Center
10:30 – 11:20	Language Technology Center	Vocabulary Enrichment	Structure and Speaking Practice	Language Studies
11:30 – 12:20	Vocabulary Enrichment	Language Technology Center	Structure and Speaking Practice	Language Studies
12:20 – 1:30	LUNCH	LUNCH	LUNCH	LUNCH
1:30 – 2:30	Reading and Writing	Reading and Writing	Reading and Writing	Reading and Writing
2:40 – 3:45	Reading and Writing	Reading and Writing	Reading and Writing	Reading and Writing

Please note: In one of the three Masters levels (110, 111 and 112), a guided research skills class will replace the Reading and Writing class.

* Courses offered at each location may vary. Courses that may be offered include: University Preparation, Summarizing and Paraphrasing, Advanced Writing Workshop, Developing Vocabulary Skills, Advanced Presentations, Academic Skills, and more.

THE ELS UNIVERSITY EARLY ADMISSION PROGRAM

Through the ELS University Early Admission program, you can earn university credit at Hawai'i Pacific University (HPU) before meeting the English requirement for admission.

This is a great opportunity to blend on-campus learning and university coursework and is ideal if you:

- Want to complete your degree a full semester sooner
- Have completed ELS English for Academic Purposes (EAP) Level 109 or have a TOEFL iBT® score of 61 or higher*
- Meet Hawai'i Pacific University's academic requirements for admission

For more information, contact your local ELS authorized Counselor or visit ELS.edu/Honolulu.

*Those who do not meet the English proficiency requirements will be enrolled in a prerequisite program of full-time (non-credit-bearing) English courses.

CONCURRENT UNIVERSITY ENROLLMENT FOR CREDIT

Some of our partner universities allow you to enroll in classes while you complete the advanced levels of the ELS English for Academic Purposes (EAP) program.

Some universities require that you go through the admissions process and be accepted before beginning the concurrent enrollment. Payment of regular university class tuition is required.

For more information, contact info@ELS.edu.



THE ELS UNIVERSITY CERTIFICATE PROGRAM

Another exciting opportunity to consider is the option to “try out” classes at a university while you study English. You will participate in this unique opportunity as part of an academic year spent abroad.

The ELS University Certificate Program allows students who are enrolled in the EAP program in Levels 107 and higher to take selected courses in business, communication, international politics, or foreign policy.

University Certificate Programs are available at:

- College of Mount Saint Vincent – Riverdale, New York
- Eckerd College – St. Petersburg, Florida
- Louisiana Tech University – Ruston, Louisiana

Sample courses:

- Education
- Global Communications and the Media
- International Business
- International Relations and Global Affairs
- Liberal Arts

For more information about the University Certificate Program, visit:

ELS.edu/Riverdale

ELS.edu/StPetersburg

ELS.edu/Ruston

AUDIT A COLLEGE COURSE FOR A SEMESTER

Some ELS locations allow you to audit specified university courses with the assistance of the ELS Academic Director or Center Director.



650

ELS opens doors to more
than 650 schools worldwide.

Find Your Career



UNIVERSITY DEGREES THAT OFFER WORK EXPERIENCE IN THE U.S.A.

Create the future you want by getting a degree from an international university and getting real-world work experience.

The opportunity to get work experience through cooperative education (co-ops) and internship programs is one of the best things you can do for your future. Completing your education with not only a degree but also actual work experience on your résumé is invaluable. This will make you highly marketable when you return home after graduation.

ELS has partnerships with universities and colleges that offer highly respected co-op and internship programs and opportunities. Get closer to your goals by combining the best education possible with the opportunity to

gain professional, practical knowledge to use in your chosen career.

Taking part in a co-op or internship gives you an advantage in a number of ways, including:

- Developing professional skills in a real-world workplace before you even finish your degree
- Learning how to write a résumé and complete job applications
- Having a firsthand perspective of what it will be like to work in a specific job role
- Networking with professionals in the field
- Building your skills and confidence
- Receiving career counseling

For more information, visit
[UniversityGuideOnline.org/WorkExperience](https://www.universityguideonline.org/work-experience).

Six Steps to Creating the Best Career Opportunities

1

BECOME PROFICIENT IN ENGLISH WITH ELS

Improve your English, learn about campus life and culture, and thrive in an exciting environment abroad. You can choose any of our 60 Centers in the United States.

2

COMPLETE ELS EAP LEVEL 112

Level 112 in the ELS English for Academic Purposes (EAP) program is required by universities to confirm your English proficiency.

3

ENROLL IN YOUR CHOSEN UNIVERSITY

More than 600 institutions of higher education in the United States recognize the Certificate of Completion of ELS EAP Level 112.

4

ENGAGE IN A CO-OP OR INTERNSHIP WITH YOUR UNIVERSITY

Apply for your chosen co-op or internship and gain real-world experience as you earn your degree.

5

GRADUATE FROM UNIVERSITY

Complete all the requirements for graduation from your university.

6

REACH YOUR CAREER GOALS!

You will return to your home country with a significant advantage over those who have not completed a co-op or internship program. Your résumé will reflect your experience and employers will take notice. The experience you gained through studying abroad paired with your professional accomplishments will make you stand out.*

*Please note: While you will be able to build a résumé and strengthen your skills, participating in a co-op or internship program does not guarantee employment.

ELS FastTrack®

The ELS FastTrack® program is the quickest way to gain the proficiency you need in order to be accepted into your chosen university. You will study English for eight hours per day among a small class of students with the same level of proficiency as you.

STEPS TO THE ELS FastTrack®

1

Choose your degree program

Apply through ELS University Admission Services. You do not need to take the TOEFL® or IELTS™ before you apply.

2

Obtain Conditional Letters of Admission

Gain Conditional Admission from your top three university choices.

3

Apply to study at an ELS FastTrack® location in the United States

Choose from any of the ELS FastTrack® locations in the U.S.A.
Go to ELS.edu/ELSFastTrack for university options.

4

Demonstrate sufficient English proficiency

- a) Submit a TOEFL® score of 52,
- b) Submit an IELTS™ score of 4.5,
- c) Achieve a Level 106 on the ELS Pre-Arrival Test (PAT), or
- d) Complete Level 105 in the ELS EAP program

5

Arrive at the ELS Center and begin ELS FastTrack®

6

Successfully complete ELS FastTrack®

7

Begin your degree study

TEACHER TRAINING

Teacher Training Certificate Programs are an ideal option for native English speakers who are just entering the field of teaching, as well as non-native speakers with strong proficiency looking to build or improve on teaching skills.

ELS offers two types of certification:

CELTA Certification – A well-established brand associated with Cambridge English, part of the University of Cambridge.

This course is held in Tacoma, Washington, and is completed over a four-week period consisting of 120 hours of study. For further details about the CELTA Certification, go to ELS.edu/TeacherTraining.

TEFL Certification – In partnership with Via Lingua, a prestigious, global educational organization, which is one of the world's largest TEFL certificate providers.

This program is located in two U.S. locations: St. Petersburg, Florida, and Boston, Massachusetts. It is a four-week program that consists of 120 hours of study. For further details about the TEFL Certification, go to ELS.edu/TeacherTraining.

ELS also offers two-, three-, four-, or eight-week customized teacher training courses in the United States on a variety of subjects to groups of English teachers whose first language is not English. Courses focus on pedagogy, language development and cultural awareness, and may also include language enhancement, dialogues with local educators, and tours of local attractions. ELS can accommodate training programs in:

- Atlantic City, New Jersey, at Stockton University
- Chicago, Illinois, at Dominican University
- Oklahoma City, Oklahoma, at Oklahoma City University
- Saint Paul, Minnesota, at University of St. Thomas – Minnesota
- St. Petersburg, Florida, at Eckerd College
- Other locations are available upon request.

For more information, please contact info@ELS.edu.



Find Your Passion



THE ELS UNIVERSITY GUIDE ONLINE

Use the ELS University Guide Online in your home country to help you discover the best university and college options available to you abroad. You can create a customized search and easily compare schools based on a number of criteria that are most important to you.

Criteria that you can use to compare schools include:

- Degree type
- Conditional Letter of Admission
- Location: state, region
- Public, Private institution
- Area of study, specific majors
- ELS level requirements
- Academic requirements – Grade Point Average (GPA)
- Availability of academic scholarships
- Tuition and housing costs

You can also use our glossary, find news about higher education, or link directly to the ELS website. If you do not finish your search in one sitting, you can save it and return later.

Get started now! Visit [UniversitySearch.com](https://www.universitysearch.com).

SCHOLARSHIP COUNSELING

If you are considering a Master of Business Administration (MBA) or a degree in science, technology, engineering, or mathematics, ELS can guide you through the processes of finding and applying for scholarship opportunities at one of our partner universities.

Visit [UniversitySearch.com/Scholarships](https://www.universitysearch.com/scholarships) for more information.

ELS UNIVERSITY ADMISSION SERVICES

The selection, application, and admissions processes can seem like a lot to navigate, but ELS University Admission Services experts can help you every step of the way.

We will:

- Help you find the best colleges and universities for your individual goals
- Assist in securing your conditional admission from one of our more than 650 partner institutions
- Manage and process all of the documentation required to apply to and correspond with the university
- Update you with important information and notifications, including your conditional admission and acceptance materials

Contact us to learn about all of our university advising and application services, conducted in your native language while you are still in your home country.

Visit ELS.edu/HowToApply and connect with an expert today.

COMPLETE PREP PROGRAM FOR THE TOEFL iBT®

The TOEFL iBT® is a 12-week, three-session prep program* that uses TOEFL iBT® practice exams, textbooks, and advanced listening software to:

- Provide practice in integrated reading and listening skills
- Improve writing and speaking
- Teach essential test-taking strategies

The program consists of six intensive lessons per day (30 per week):

- Two Lessons – Structure and Speaking Practice or Language Studies
- One Lesson – TOEFL iBT® Practice in the ELS Language Technology Center
- One Lesson – TOEFL iBT® Reading and Writing Practice
- Two Lessons – TOEFL iBT® Prep, putting skills to work

You will have access to the latest practice test materials, including ETS (Educational Testing Service) TOEFL® Practice Online diagnostic test and ETS CriterionSM online writing evaluation.

If you complete the 12-week course, you will receive a seat for the official TOEFL iBT® offered right in the ELS Center.

Go to ELS.edu/HowToApply to learn more.

*This program is available as a three-session package. You may choose to take only one or two sessions (four or eight weeks, respectively) of the program. Four- and eight-week programs are available at selected locations, but this option does not include a seat for the official exam.



1 million

visitors per year interested
in higher education search
UniversitySearch.com

General English Programs



GENERAL ENGLISH

ELS offers General English programs to help you communicate more accurately and efficiently.

Our program will support you as you learn skills in:

- Listening
- Pronunciation
- Grammar
- Speaking
- Vocabulary

Our morning classes include:

- Structure and Speaking Practice or Language Studies
- Vocabulary Enrichment
- Skills Enhancement Class in the morning in place of Vocabulary Enrichment (Masters levels)
- One lesson in our Language Technology Center

Afternoons at all levels are dedicated to Skills Enhancement Classes such as American Idioms, American Film, Current Events and American Culture.*

For those studying in the United States, Contact America! provides regular opportunities to meet with native English speakers and listen to guest lecturers. You will have many opportunities to have conversational practice using practical, real-world English.

*Exact courses offered at each location may vary.

GENERAL ENGLISH PROGRAM COURSE DETAILS	
Number of levels	12 levels: 101 – 112 (Beginner to Masters)
Number of lessons per week	30 lessons (50 minutes per lesson)
Number of weeks for each level	4 weeks (each course covers 1 level)
Number of start dates annually	26 start dates
Maximum number of students per class	15 students in all classes except Skills Enhancement Classes, which may have 20 students. LTC seats students according to lab capacity.
Age requirements	Varies by Center and housing option. See application for details.
Program availability	Select locations

GENERAL ENGLISH PROGRAM SAMPLE CLASS SCHEDULE				
	BEGINNER (101 – 103)	INTERMEDIATE (104 – 106)	ADVANCED (107 – 109)	MASTERS (110 – 112)
8:30 – 9:20	Structure and Speaking Practice	Structure and Speaking Practice	Language Technology Center	Skills Enhancement Class*
9:30 – 10:20	Structure and Speaking Practice	Structure and Speaking Practice	Vocabulary Enrichment	Language Technology Center
10:30 – 11:20	Language Technology Center	Vocabulary Enrichment	Structure and Speaking Practice	Language Studies
11:30 – 12:20	Vocabulary Enrichment	Language Technology Center	Structure and Speaking Practice	Language Studies
12:20 – 1:30	LUNCH	LUNCH	LUNCH	LUNCH
1:30 – 2:30	Pronunciation/Conversation*	Compelling Conversations*	Media Writing*	Creative Writing*
2:40 – 3:45	Vocabulary in Use	Listening With Confidence*	Film and Discussion	American Slang*

* Exact courses offered at each location may vary. Additional courses that may be offered include: Communication Through Video, What Makes America Tick, English for Business, Public Speaking, Real-World Listening, American Ways, and more.

SEMI-INTENSIVE ENGLISH

If you want to learn English while still having the freedom to discover the city and sights around you, our Semi-Intensive English program is a great fit.

You will develop the language skills that are most critical to communicating effectively in English, including:

- Listening
- Pronunciation
- Speaking
- Vocabulary

You will attend classes in the morning. These classes will be the building blocks of your English proficiency.

They include:

- Structure and Speaking Practice or Language Studies
- Vocabulary Enrichment
- One lesson in our Language Technology Center

For those studying in the United States, Contact America! provides you with regular opportunities to meet with native English speakers, listen to guest lecturers, and participate in local excursions. You will have many opportunities to practice your conversational skills using practical, real-world English.

SEMI-INTENSIVE ENGLISH PROGRAM COURSE DETAILS	
Number of levels	12 levels: 101 – 112 (Beginner to Masters)
Number of lessons per week	20 lessons (50 minutes per lesson)
Number of weeks for each level	4 weeks (each course covers 1 level)
Number of start dates annually	26 start dates
Maximum number of students per class	15 students – Structure and Speaking Practice, Language Studies, and Vocabulary Enrichment 20 students – Skills Enhancement Classes
Age requirements	Varies by Center and housing option. See application for details.
Program availability	All U.S. and Canada Centers except ELS/Hollywood and ELS/Tampa

SEMI-INTENSIVE ENGLISH PROGRAM SAMPLE CLASS SCHEDULE				
	BEGINNER (101 – 103)	INTERMEDIATE (104 – 106)	ADVANCED (107 – 109)	MASTERS (110 – 112)
8:30 – 9:20	Language Technology Center	Structure and Speaking Practice	Vocabulary Enrichment	Skills Enhancement Class*
9:30 – 10:20	Vocabulary Enrichment	Structure and Speaking Practice	Language Technology Center	Language Technology Center
10:30 – 11:20	Structure and Speaking Practice	Vocabulary Enrichment	Structure and Speaking Practice	Language Studies
11:30 – 12:20	Structure and Speaking Practice	Language Technology Center	Structure and Speaking Practice	Language Studies

* Exact courses offered at each location may vary. Additional courses that may be offered include Communication Through Video, What Makes America Tick, English for Business, Public Speaking, Real-World Listening, American Ways, and more.



AMERICAN EXPLORER

If you plan to take a vacation and want to improve your English skills while you are traveling, consider our American Explorer program.

You can deepen your vocabulary and understanding, as well as improve your speaking skills – all while enjoying your travels abroad.

In this program, you will learn about and develop your skills in:

- Listening
- Pronunciation
- Speaking
- Vocabulary

AMERICAN EXPLORER PROGRAM COURSE DETAILS	
Number of levels	12 levels: 101 – 112 (Beginner to Masters)
Number of lessons per week	15 lessons (50 minutes per lesson) Monday through Friday, with afternoons free
Number of weeks for each level	4 weeks (each course covers 1 level)
Course curriculum	Focus on Structure and Speaking Practice, with either Vocabulary Enrichment or Language Technology Center
Accommodations	See specific Center for options
Number of start dates annually	26 start dates
Maximum number of students per class	15 students – Structure and Speaking Practice, Language Studies and Vocabulary Enrichment
Age requirements	Varies by Center and housing option. See application for details.
Program availability	All U.S. Centers except ELS/Hollywood and ELS/Tampa

AMERICAN EXPLORER PROGRAM SAMPLE CLASS SCHEDULE				
	BEGINNER (101 – 103)	INTERMEDIATE (104 – 106)	ADVANCED (107 – 109)	MASTERS (110 – 112)
8:30 – 9:20	Structure and Speaking Practice	Vocabulary Enrichment or Language Technology Center	Structure and Speaking Practice	Language Studies
9:30 – 10:20	Structure and Speaking Practice	Structure and Speaking Practice	Structure and Speaking Practice	Language Studies
10:30 – 11:20	Vocabulary Enrichment or Language Technology Center	Structure and Speaking Practice	Vocabulary Enrichment or Language Technology Center	Skills Enhancement Class or Language Technology Center

*Exact courses offered at each location may vary. Additional courses that may be offered include Communication Through Video, What Makes America Tick, English for Business, Public Speaking, Real-World Listening, American Ways, and more.



2.9 million

followers on the ELS Facebook page

Business Communication Programs



BUSINESS ENGLISH

ELS offers several unique study options to help busy professionals like you master the skills so essential to achieving your career goals.

The recently improved ELS Business English course develops specific language for discussing key business issues, performing common workplace tasks, and applying intercultural communication skills to different business contexts.

The Business English program curriculum consists of:

- **Key language areas:** speaking, listening, grammar, vocabulary, reading, and writing
- **Workplace skills:** giving presentations, negotiating agreements, leading and participating in meetings, networking, writing emails, and more
- **Discussion topics:** management styles, team building, job satisfaction, risk, takeovers and mergers, success, communications, business relationships, crisis management, strategy, finance, marketing, training, project management, ethics, and more
- **Intercultural communication skills:** power and distance, nonverbal communication, directness, views of time, and more

Course structure:

- Six unique modules, each four weeks long – you may register for any number of modules.
- Each module includes opportunities to:
 - Give presentations
 - Listen to professional interviews
 - Read news articles
 - Discuss current issues
 - Write business correspondence
- Field trips – each module includes field trips to show you how businesses function and appeal to customers.

BUSINESS ENGLISH PROGRAM SAMPLE CLASS SCHEDULE*

	HIGH INTERMEDIATE (Eligible at 106)	ADVANCED (107 - 109)	MASTERS (110 - 112)
8:30 – 9:20	Structure and Speaking Practice	Vocabulary Enrichment	Language Technology Center
9:30 – 10:20	Structure and Speaking Practice	Language Technology Center	Skills Enhancement Class
10:30 – 11:20	Language Technology Center	Structure and Speaking Practice	Language Studies
11:30 – 12:20	Vocabulary Enrichment	Structure and Speaking Practice	Language Studies
12:20 – 1:30	LUNCH	LUNCH	LUNCH
1:30 – 2:30	Business English	Business English	Business English
2:40 – 3:45	Business English	Business English	Business English

*Afternoon classes meet for 60 and 65 minutes Monday through Thursday, giving you the same amount of total class time per week as your morning classes but allowing for free afternoons every Friday.

EXECUTIVE ENGLISH PROGRAMS

English for Executives

If you are a professional and want to increase your career-specific English proficiency, consider the English for Executives Program. In this program, you will experience:

- Group and one-to-one instruction
- Four 50-minute interactive group lessons daily within regular ELS General English morning classes
- Three daily personalized 50-minute one-to-one lessons

Super-Intensive English

As an executive or professional, you may be looking for the quickest way to improve your English proficiency. The Super-Intensive English program is robust, one-on-one, and specially designed to meet your individual needs. In this program, you will have:

- One-to-one instruction
- Coursework that is customized based on your initial level of English ability, desired language use and outcomes, and time available for study
- Lessons focused on business topics and vertical markets relevant to you
- Flexibility to meet your individual needs and time frames, from one to 52 weeks
- Variety in length: 15, 20, 25, 30 or 45 lessons each week, each 50 minutes in length

Super-Intensive English Plus

You will experience maximum results with our Super-Intensive English Plus program option. This course can be especially useful for you if you are preparing for an important business presentation or meeting in an English-speaking situation. In this program, you will experience:

- One-to-one instruction
- Intensive study, with 70 50-minute lessons per week, taught Monday through Sunday

For more information about ELS Executive English programs, email ELS Special Programs at sp@ELS.edu.



55+

years of dedication to
academic quality and
student success

Youth and Young Adult Programs



No virtual experience can match the excitement and perspective that come from actually visiting a new place. Vacation study with ELS brings young people face-to-face with new cultures and experiences while expanding their minds and outlooks. Students will learn English, have the adventure of a lifetime and get ready for an exciting future!

ELS YOUTH AND YOUNG ADULT PROGRAMS:

United States

- Youth Camps – for students ages 10 to 16
 - Fun & Sun Camp
 - Malibu I and II Youth Camp
 - January Youth Homestay

- University Preparation Programs – for students ages 14 to 17
- Summer in New York City Program – for young adults age 16+
- Nike Sports Camps – for students ages 9 to 17

Canada

Summer and Winter Youth Programs – for students ages 9 to 17

Australia

- High School Preparation Program – for students ages 13 to 17
- Junior Holiday English Program – for students ages 13 to 17

YOUTH CAMP PROGRAMS – U.S.A.

Youth Camps in the U.S.A. include the Fun & Sun Camp and January Youth Homestay programs in St. Petersburg, Florida, and Malibu I and II Youth Camps in Malibu, California. These camps are short-term, all-inclusive programs that include exposure to academics as well as to social and cultural experiences. Students will learn and thrive while having fun with new friends and experiencing local culture and attractions!

Youth Camp programs are:

- Fifteen 50-minute lessons per week, plus five 50-minute expansion activities centered on topics of interest to kids
- Located on pristine, safe, and secure university campuses
- Taught by instructors who are certified and highly experienced with teaching children
- Supervised 24 hours a day by carefully selected, attentive, caring, and professional staff
- Located right on campus with amenities such as the cafeteria, gym, pool, and more

For more on ELS Youth Camp Programs, visit ELS.edu/YouthPrograms.



UNIVERSITY PREPARATION PROGRAMS – U.S.A.

Our University Preparation program is offered at two prestigious schools in the United States: Pepperdine University in beautiful Malibu, California, and the Lawrenceville School in Lawrenceville, New Jersey, near Princeton.

Students ages 14 – 17 can participate in these all-inclusive programs both to learn English skills and to learn about higher education in the United States. This learning happens in the classroom and during tours of universities around the area. Preparation for the TOEFL®/SAT is included.

To find out more about ELS University Preparation programs, visit ELS.edu/UniversityPrep.



25

years of offering exciting summer programs at the ELS Malibu Youth Camp

SUMMER IN NEW YORK CITY – U.S.A.

During the Summer in New York City Program, students enjoy three weeks in New York City, one of the most famously energetic cities in the world. Students have an exciting time meeting new people, seeing the sights, discovering the infinite possibilities of the city, and developing their English skills at the same time.

All housing, meals and excursions are planned and included in the program cost.

The program includes:

- Monday through Thursday: four 50-minute lessons of General English and American Culture
- Friday: academic field trips related to the American Culture classes, such as:
 - Museum of Modern Art
 - Radio City Music Hall
 - United Nations
 - Smithsonian Museum of the American Indian
- Practice with ELS instructors, with a focus on improving English language skills

The Summer in New York City program at the prestigious Juilliard School is intended for independent learners age 16 and over. Student accommodations are in the dormitories of the Juilliard School at the Lincoln Center for the Performing Arts. Students will have the experience

of their lives – with adventures and wonders unique to this very special city!

SUMMER IN NEW YORK CITY PROGRAM COURSE DETAILS	
Number of levels	Beginner, Intermediate and Advanced
Number of lessons per week	16 lessons (50 minutes per lesson) Monday – Thursday
Number of weeks for each level	3 weeks
Course curriculum	Four 50-minute lessons of General English and American Culture daily, Monday – Thursday. On Fridays, excursions related to American Culture classes are scheduled.
Accommodations	Double occupancy dormitory accommodations, including 19 meals per week
Other complimentary features	Certificate of attendance, ELS medical insurance, round-trip airport pickup (from JFK), ELS tote bag, lanyard, USB bracelet, T-shirt, beach towel and all curricular materials
Maximum number of students per class	15 students per class
Age requirements	16 years of age or older
Program availability	ELS/New York (Juilliard), New York



NIKE SPORTS CAMPS FOR INTERNATIONAL STUDENT ATHLETES – U.S.A.

The Nike Sports Camps for International Student Athletes are a thrilling opportunity for young learners to learn English while receiving first-rate sports training and instruction.



Students will experience the finest English instruction as they are guided through extensive sports training. The combination of an ELS Youth Camp Program and a Nike Sports Camp allows students to practice and feel comfortable using the English they learn. They will interact with other young people from all over the world. It is a social and fun experience that allows students to learn, train, and communicate.

ELS Youth Camp Programs offered for students in conjunction with the Nike Sports Camp include:

San Domenico School

One, two or three weeks of ELS English instruction combined with the choice of Nike Tennis, Basketball, Soccer or Swim option.

Malibu Youth Camp

Two or three weeks of English language instruction and one week of Nike Tennis, Basketball or Soccer Camp

University Prep Camp at the Lawrenceville School

Two- or three-week programs followed by choice of Nike Tennis Camp or Nike Golf Camp

Students who attend any of these programs receive full ELS program features and benefits.

Look for more ELS partnership programs in the future.

See Nike Sports Camp athletes in action at ELS.edu/NikeCamps.

CANADIAN SUMMER AND WINTER YOUTH PROGRAMS VANCOUVER, BRITISH COLUMBIA

Young people will have an enjoyable and engaging time learning English in an ELS Summer or Winter Youth Camp program in Canada. Through this interactive experience, your child will learn written and spoken grammar, and will discover Canadian culture.



The ELS Summer and Winter Youth Camp programs make learning fun and exciting!

Curriculum includes:

- Structure Practice
- Reading
- Canadian Culture
- Speaking

School Life

Programs available for:

- Ages 9 to 12 Young Learners Program (summer only)
- Ages 13 to 17 Teen Program (summer and winter)
- Beginner, Intermediate, and Advanced Levels
- 25 hours per week

Optional Vancouver Activities

Afternoons, Evenings and Weekends

Summer: kayaking, biking, shopping, beach volleyball, Vancouver Aquarium

Winter: hockey game, snowboarding, ice-skating, shopping

Supervised Weekend Trips: Victoria, Whistler, Seattle, Playland (summer only), the Rocky Mountains (summer only)

SAMPLE CLASS SCHEDULE					
	MONDAY	TUESDAY	WEDNESDAY	THURSDAY	FRIDAY
9:00 – 10:40	Structure Practice and Journal	Structure Practice and Journal	Structure Practice and Journal	Structure Practice and Journal	Structure Practice and Journal
10:40 – 10:50	BREAK	BREAK	BREAK	BREAK	BREAK
10:50 – 12:10	Canadian Culture	Canadian Culture	Canadian Culture	Canadian Culture	Canadian Culture
12:20 – 12:50	LUNCH	LUNCH	LUNCH	LUNCH	LUNCH
12:50 – 2:00	Reading	Reading	Educational Field trip (included)	Reading	Social Activity (included)
2:00 – 2:10	BREAK	BREAK		BREAK	
2:10 – 3:30	Speaking	Speaking		Speaking	

For more information, please visit
ELS.edu/VancouverYouth.

HIGH SCHOOL PREPARATION PROGRAM SYDNEY, AUSTRALIA

ELS offers a High School Preparation program where students can develop their English language skills, specifically in the areas of listening, speaking, reading, and writing.

The higher levels of this program include English for specific Australian high school subjects, including:

- Mathematics
- Personal Development
- Science
- Health and Computer Studies
- Human Society

Students who participate in the High School Preparation program will also learn about Australian study methods and culture. Exciting educational, social, and sports activity opportunities are included, too!

Suitable for students 13 to 17 years of age.

JUNIOR HOLIDAY ENGLISH PROGRAM SYDNEY, AUSTRALIA

Students can experience one of the most beautiful cities in the world – Sydney, Australia – as they become more proficient in the English language.

The duration of the program is one week to six weeks during July and August. The program includes:

- Four days per week of English lessons
- One full-day excursion each week (admission and travel included)
- Optional cultural and recreational activities on Saturdays

Students can choose to stay with our homestay families.

For more information, please contact
Sydney@ELS.edu.



Find Your Home Away From Home

Your ELS Center is a warm and inviting environment where you will learn English, and so much more.

The goal of the ELS staff is simple: to make sure your experience is the best it can be. The staff at your ELS Center is there to help you adjust to your new surroundings. You will experience American culture both in the classroom and outside of it.

You will immediately begin meeting new people and making new friends with international and American students through the many activities available to you. Your ELS Center staff will help you find activities that interest you so that you can start having fun!

You have the opportunity to live alongside your fellow students in on- or off-campus housing or with an English-speaking host family.

Your ELS Center will feel like home. Your ELS Center staff and the students you meet will become like family to you. You will be welcomed and treated with kindness and respect. You will work toward your goals and succeed with the support of your ELS Center.

For more information, visit ELS.edu/HowToApply.

“Hello from ELS/Chicago, located on the campus of Dominican University. My name is Gretchen Dee, and I am the Center Director at ELS/Chicago. Although I grew up in Chicago, I have traveled to more than 30 countries and have lived and worked in Thailand and the Netherlands. In Amsterdam, I received my master's degree, so I like to think that I understand the occasional challenges and numerous delights of living and studying in another country. Like you, I am deeply interested in other cultures and new experiences. If you have not yet discovered how amazing it is to have friends from many different cultures and backgrounds, you will soon. At ELS/Chicago, we believe that your education continues long after you leave the classroom. Our three housing options and variety of awesome student activities give our students the opportunity to practice English, explore the many attractions of Chicago, and make friends with American students and peers from around the world. We are excited to welcome you to the beautiful city of Chicago.”

– Gretchen Dee, Center Director, ELS/Chicago

ELS HOUSING OPTIONS

ELS understands that each student has his or her own preferences when it comes to living accommodations, so we offer several options to make sure that you feel comfortable and at home.

Student Residence

Many ELS locations based on university campuses offer living options on campus near the ELS Center. This type of residence makes it easy for you to be social with your fellow students and to fully experience campus life.

Interacting with domestic students and other international students gives you the chance to practice your English skills while being social and having a great time. You will share your customs and culture while learning about the customs and cultures of others.

Homestays

Every ELS Center offers homestay accommodations with an English-speaking host family. ELS selects host families very carefully so that each student has a safe and comfortable experience in a “home away from home.” Students have reported that living with English-speaking

host families has helped them learn English more quickly while getting direct exposure to new customs and culture.

You may develop a special connection with your host family that can last a lifetime.

Apartment Housing

If you prefer a more independent lifestyle, you may choose to live in an apartment near your ELS Center. Apartment costs and conditions can vary depending on location.

Some ELS locations have special relationships with local apartment providers that welcome ELS students, families, married couples, or executive clients.

Contact your local ELS authorized Counselor at [ELS.edu/HowToApply](https://els.edu/HowToApply) for more information on ELS housing options.



Find Your Location

HOST OR AFFILIATED INSTITUTION (IF APPLICABLE)	CITY, STATE/PROVINCE	PAGE
USA		
Atlanta – City Center	Atlanta, Georgia	39
Augustana University	Sioux Falls, South Dakota	40
Barry University	Miami, Florida	41
Bates Technical College	Tacoma, Washington	42
Berkeley – City Center	Berkeley, California	43
Boston – City Center	Boston, Massachusetts	44
Bowling Green State University	Bowling Green, Ohio	45
California Lutheran University	Thousand Oaks, California	46
Case Western Reserve University	Cleveland, Ohio	47
Clemson University Center of Greenville	Greenville, South Carolina	48
Coastal Carolina University	Myrtle Beach, South Carolina	49
College of Mount Saint Vincent	Riverdale, New York	50
Concordia University	Portland, Oregon	51
Dominican University	Chicago, Illinois	52
Dominican University of California	San Rafael, California	53
East Tennessee State University	Johnson City, Tennessee	54
Eastern Kentucky University	Richmond, Kentucky	55
Eckerd College	St. Petersburg, Florida	56
Fairleigh Dickinson University	Teaneck, New Jersey	57
Florida Institute of Technology	Melbourne, Florida	58
Foothill College and De Anza College	Silicon Valley, California	59
Front Range Community College	Denver, Colorado	60
Grand Valley State University	Grand Rapids, Michigan	61
Hawai'i Pacific University	Honolulu, Hawaii	62
Hofstra University	Hempstead, New York	63
Indiana University–Purdue University Fort Wayne	Fort Wayne, Indiana	64
Indianapolis – City Center	Indianapolis, Indiana	65
International Technological University	San Jose, California	66
Johnson & Wales University	Charlotte, North Carolina	67
Lewis University	Romeoville, Illinois	68
Los Angeles Film School	Hollywood, California	69
Louisiana Tech University	Ruston, Louisiana	70
Manhattan – City Center	New York, New York	71
Marquette University	Milwaukee, Wisconsin	72
McNeese State University	Lake Charles, Louisiana	73
Middle Tennessee State University	Nashville, Tennessee	74
Northern Illinois University	DeKalb, Illinois	75
Oklahoma City University	Oklahoma City, Oklahoma	76
Point Park University	Pittsburgh, Pennsylvania	77
Roger Williams University	Bristol, Rhode Island	78
Rutgers University–Camden	Camden, New Jersey	79
Saint Joseph's University	Philadelphia, Pennsylvania	80

HOST OR AFFILIATED INSTITUTION (IF APPLICABLE)	CITY, STATE/PROVINCE	PAGE
USA		
San Diego – City Center	San Diego, California	81
San Francisco – City Center	San Francisco, California	82
Santa Barbara – City Center	Santa Barbara, California	83
Santa Monica – City Center	Santa Monica, California	84
Seattle – City Center	Seattle, Washington	85
State University of New York – Brockport	Rochester, New York	86
Stetson University	Orlando, Florida	87
Stockton University	Atlantic City, New Jersey	88
Texas Tech University	Lubbock, Texas	89
University of Cincinnati	Cincinnati, Ohio	90
University of Houston – Clear Lake	Houston, Texas	91
University of La Verne	La Verne, California	92
University of Missouri – St. Louis	St. Louis, Missouri	93
University of New Haven	New Haven, Connecticut	94
University of North Dakota	Grand Forks, North Dakota	95
University of St. Thomas – Houston	Houston, Texas	96
University of St. Thomas – Minnesota	St. Paul, Minnesota	97
The University of Tampa	Tampa, Florida	98
The University of Texas at Dallas	Dallas, Texas	99
University of the Incarnate Word	San Antonio, Texas	100
University of Wisconsin – Parkside	Kenosha, Wisconsin	101
West Chester University	West Chester, Pennsylvania	102

AUSTRALIA		
Sydney – City Centre	Sydney, New South Wales	103
CANADA		
Toronto – City Center	Toronto, Ontario	104
Vancouver – City Center	Vancouver, British Columbia	105
CHINA		
Shanghai – City Center	Shanghai	106
INDIA		
SRM University	Chennai, Tamil Nadu	107
MALAYSIA		
Universiti Putra Malaysia	Kuala Lumpur	108
Johor Bahru – City Center	Johor Bahru	109
Kuala Lumpur – City Center	Kuala Lumpur	109
Subang Jaya – City Center	Subang Jaya	109
PANAMA		
Panama City – City Center	Panama City	110
SAUDI ARABIA		
Jeddah – City Center	Jeddah	111
Riyadh – City Center	Riyadh	111

Refer to these symbols on the following pages to determine whether the ELS Center is located in a downtown, urban or suburban setting.





For more information on this Center, visit: ELS.EDU/ATLANTA

Atlanta – City Center

Atlanta, Georgia

ELS/Atlanta is located on the renovated and modern fourth floor of the Wells Fargo Bank building in Decatur, Georgia. This chic and very walkable area contains an easily accessible MARTA train station and many diverse restaurants within walking distance from the Center. The Center is also close to downtown and midtown Atlanta, abundant in major universities, museums, luxury and outlet shopping, professional sports and events and other tourist attractions.

Great Things to See and Do

Atlanta Sports: Cheer for Atlanta’s four sports teams – the Atlanta Braves (baseball), the Atlanta Dream (women’s basketball), the Atlanta Hawks (men’s basketball), and the Atlanta Falcons (football).

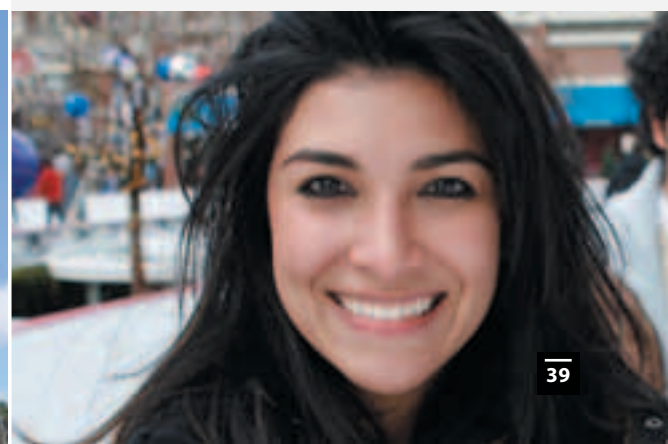
The Georgia Aquarium: Enjoy the 80,000 animals and 500 species living in the world’s largest aquarium.

CNN Center: Sit behind an anchor desk, practice reading a teleprompter, and even visit a special-effects studio to learn how a broadcast is produced.



DOWNTOWN

Four-Week Courses	English for Academic Purposes, General English, Semi-Intensive English, American Explorer
Options Available	Conversation Partnerships
Housing Options	Student Residence (off-campus), Homestay
Minimum Age	16
Address	250 East Ponce de Leon Avenue, Suite 400 Decatur, Georgia 30030 U.S.A.





For more information on this Center, visit: ELS.EDU/SIOUXFALLS | UNIVERSITYSEARCH.COM/AUGIE

Augustana University

Sioux Falls, South Dakota

ELS/Sioux Falls is located on the campus of Augustana University, a selective private university of 1,800 students in Sioux Falls, South Dakota. Sioux Falls, consistently ranked one of the safest medium-sized cities in the United States, is the business, health care, shopping, entertainment, and cultural center of the region. Augustana University's location in central Sioux Falls places you within easy walking or biking distance of restaurants, grocery stores, entertainment, and more.

Great Things to See and Do

Falls Park: This 123-acre park is complete with some of the city's original buildings, a farmers market, trails for walking or biking, and the falls themselves, which move over 7,000 gallons of water per second.

Day Trips/Weekends Away: Spend the weekend exploring the Great Plains Zoo and the Delbridge Museum of Natural History. Looking for warm-weather fun? Visit the Wild Water West Waterpark, complete with the only wave pool in South Dakota, sand volleyball courts, a miniature golf course, and more!

Music, Art and Culture: Take a walk through downtown Sioux Falls and enjoy SculptureWalk, a year-round outdoor sculpture exhibit. Browse the art displays and vendors at the annual Festival of Cultures. Visit one of the many history and art museums or enjoy music at a concert.



URBAN

ELS ON CAMPUS

Four-Week Courses	English for Academic Purposes, Semi-Intensive English, American Explorer
Options Available	Class Visitation, Concurrent Enrollment, Conversation Partnerships
Housing Options	Student Residence (on-campus), Homestay
Minimum Age	17
Host Institution	Private; Enrollment 1,800 Waive TOEFL® for ELS graduates*
Ranking	<i>U.S. News & World Report: #2 of "Top Regional Colleges of the Midwest" – 2016</i>
Sample Majors Included	Undergraduate: Accounting; Art/Fine Art; Biological and Biomedical Sciences; Business; Computer Science; Economics
Address	2001 South Summit Avenue Sioux Falls, South Dakota 57197 U.S.A.

*Accepted ELS Level and applicable degree program(s) vary by institution.





For more information on this Center, visit: ELS.EDU/MIAMI | UNIVERSITYSEARCH.COM/BARRY

Barry University

Miami, Florida

ELS/Miami is located on the campus of Barry University in Miami Shores, a suburb of Miami. The Center's on-campus location allows you to experience American college life while participating in campus activities. With year-round sunshine, warm ocean waters and sandy beaches, Miami offers outdoor activities such as windsurfing, snorkeling, jet skiing and boating. Miami is also home to world-famous art, music, film and food festivals, world-class shopping, concerts, and sports.

Great Things to See and Do

Everglades National Park: Explore the park's six million hectares of swamps, prairies, and subtropical jungles, home to 14 rare and endangered species.

Miami Seaquarium: This popular aquarium and wildlife conservation center, which has been entertaining and educating visitors to Miami for over 60 years, is located on Biscayne Bay, just minutes from downtown Miami.

Art Deco District: Miami's South Beach district is home to the world's largest collection – over 800 buildings – of Art Deco architecture.



ELS ON CAMPUS

Four-Week Courses	English for Academic Purposes, General English, Semi-Intensive English, American Explorer
Options Available	Class Visitation
Housing Options	Student Residence (on-campus), Student Residence (off-campus), Homestay
Minimum Age	17
Host Institution	Private; Enrollment 9,030 Waive TOEFL® for ELS graduates*
Ranking	<i>U.S. News & World Report: among the "Top National Universities" – 2016</i>
Sample Majors Included	Undergraduate: Biology; Business Administration – International Business; Computer Science; Psychology; Public Relations Graduate: Business Administration; Public Administration
Address	11300 NE Second Avenue Miami Shores, Florida 33161 U.S.A.

*Accepted ELS Level and applicable degree program(s) vary by institution.





For more information on this Center, visit: ELS.EDU/TACOMA | UNIVERSITYSEARCH.COM/BATES

Bates Technical College

Tacoma, Washington

ELS/Tacoma is located on the friendly campus of Bates Technical College in downtown Tacoma, Washington, a midsize city with a population of 200,000 people. Dining, recreation, hospitals, and entertainment are all within a 10-minute walk of the Bates campus. ELS/Tacoma students enjoy outdoor activities, seasonal events, student clubs, and volunteering. You can also take day trips to popular destinations such as Mount Rainier National Park, Seattle, Portland, and Vancouver.

Great Things to See and Do

Unique Museums: Tacoma is home to exceptional museums for a variety of interests, from the world-famous Museum of Glass, a contemporary art museum, to LeMay – America’s Car Museum, one of the world’s largest private car collections.

Seattle: Just half an hour away, Seattle is home to a thriving arts scene, rich history, culture, outdoor activities, and some of the country’s best coffee.

Experience Nature: Point Defiance Park boasts an extensive network of trails and roads, beaches, gardens, a zoo, and an aquarium.



ELS ON CAMPUS

Four-Week Courses	English for Academic Purposes, Semi-Intensive English, American Explorer
Options Available	CELTA Certification, Class Visitation, Concurrent Enrollment, Conversation Partnerships
Housing Options	Student Residence (off-campus), Homestay
Minimum Age	16
Host Institution	Public; Enrollment 1,400 Waive TOEFL® for ELS graduates*
Sample Majors** Included	Undergraduate: Civil Engineering; Dental Lab Technician; Marketing and Business Management; Practical Nurse; Web Development
Address	1101 South Yakima Avenue Tacoma, Washington 98405 U.S.A.

*Accepted ELS Level and applicable degree program(s) vary by institution.

**Bates Technical College offers Certificate and Associate programs.





For more information on this Center, visit: ELS.EDU/BERKELEY

Berkeley – City Center

Berkeley, California

ELS/Berkeley is located in the San Francisco Bay Area, where you can enjoy comfortable weather, excellent public transportation, and easy access to San Francisco and San Jose. The Center is located in a facility shared by both ELS students and students from the University of California, Berkeley. Berkeley is home to art and cultural activities, including numerous festivals and open-air markets, as well as many libraries, cafes and bookstores.

Great Things to See and Do

Tilden Regional Park: Relax on the sandy beach at Lake Anza, visit the botanical garden, or enjoy hiking or bicycling through kilometers of trails.

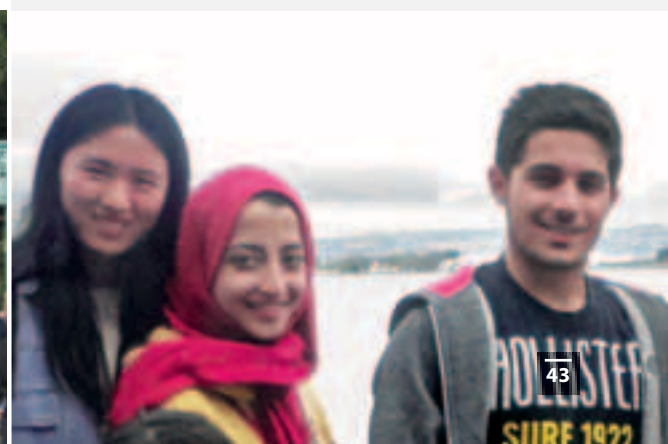
Telegraph Avenue: For several city blocks, you can dine in diverse restaurants and cafes, shop with local art and craft vendors, and absorb Berkeley’s lively culture.

Fourth Street: Originally intended as an industrial park, Fourth Street is now a vibrant retail area where you can experience eclectic dining and upscale shopping, plus live music on weekends.



URBAN

Four-Week Courses	English for Academic Purposes, Semi-Intensive English, American Explorer
Options Available	Conversation Partnerships
Housing Options	Student Residence (off-campus), Homestay
Minimum Age	16
Address	2425 Prospect Street Berkeley, California 94704 U.S.A.





For more information on this Center, visit: ELS.EDU/BOSTONDOWNTOWN

Boston – City Center

Boston, Massachusetts

ELS/Boston – Downtown is located in a fun, urban setting in the heart of historic Boston. The Center is easily accessible to some of the city's best food, shopping, and sightseeing. You can visit many nearby colleges and universities, go to a rock concert, enjoy live theater, or cheer at a professional sports game. Those interested in history can walk along Boston's famous Freedom Trail – which starts directly outside the Center!

Great Things to See and Do

Freedom Trail: The nearly five-kilometer trail connects 16 of the city's most historic sites, including the Bunker Hill Monument, the site of the Boston Massacre, and the Paul Revere House.

Fenway Park: Enjoy the excitement of a professional baseball game at the home of the Boston Red Sox.

Faneuil Hall: Built in 1742, Faneuil Hall is significant to the political history of Massachusetts. Nearby, visit the Faneuil Hall Marketplace and, on Fridays and Saturdays, the Haymarket, an open-air market.



DOWNTOWN

Four-Week Courses	English for Academic Purposes, General English, Semi-Intensive English, American Explorer
Options Available	TEFL Certification, Class Visitation
Housing Options	Student Residence (off-campus), Homestay
Minimum Age	16
Address	125 Tremont Street Boston, Massachusetts 02108 U.S.A.





For more information on this Center, visit: ELS.EDU/BOWLINGGREEN | UNIVERSITYSEARCH.COM/BGSU

Bowling Green State University

Bowling Green, Ohio

ELS/Bowling Green is conveniently located at the heart of the campus of Bowling Green State University in the friendly city of Bowling Green, Ohio. Bowling Green, a city of 30,000 people, is located in Northwest Ohio. Bowling Green is a small community, but it is full of restaurants and entertainment for visitors of all ages. The region is full of natural beauty, with parks and nature reserves perfect for swimming and hiking.

Great Things to See and Do

BGSU Planetarium: The Bowling Green State University Planetarium is a 118-seat public science theater where you can observe the sky as it would be seen from any place on the Earth at any time, including the sun, moon, planets, and more than 4,000 stars.

Black Swamp Arts Festival: The Black Swamp Arts Festival (BSAF) presents an annual arts festival promoting the arts in the Bowling Green community.

Clazel Theater: The original movie theater from the 1950s has been transformed into a beautiful live entertainment and banquet facility.



SUBURBAN

ELS ON CAMPUS

Four-Week Courses	English for Academic Purposes, Semi-Intensive English, American Explorer
Options Available	Class Visitation
Housing Options	Student Residence (on-campus), Homestay
Minimum Age	16
Host Institution	Public; Enrollment 19,408 Waive TOEFL® for ELS graduates*
Ranking	<i>U.S. News & World Report: top 2% of "National Universities with the Most International Students" – 2016</i>
Sample Majors Included	Undergraduate: Architecture and Environmental Design; Aviation Studies; Biology; Business Management; Computer Science Graduate: Business Management; Computer Science; Technology Management
Address	4010 Business Administration Bowling Green, Ohio 43403 U.S.A.

*Accepted ELS Level and applicable degree program(s) vary by institution.





For more information on this Center, visit: ELS.EDU/THOUSANDOAKS | UNIVERSITYSEARCH.COM/CALLUTHERAN

California Lutheran University

Thousand Oaks, California

ELS/Thousand Oaks is located on the beautiful and welcoming campus of California Lutheran University, about 20 kilometers from the Pacific Coast beaches and downtown Los Angeles. Thousand Oaks, one of the safest cities of its size in the United States, is a stunning suburban city with a true feeling of community. You can enjoy a high quality of life, regularly scheduled outdoor festivals, world-class shopping and fantastic sunny days year-round.

Great Things to See and Do

Action-Packed Entertainment: Universal CityWalk, located right next to Universal Studios Hollywood®, is a landmark entertainment complex and a premier destination for dining, shopping, live music and dancing, and indoor skydiving.

Malibu: The city of Malibu is located west of Thousand Oaks, and is famous for not only its beautiful, sandy beaches and warm climate, but also for the many celebrities who call the city home.

Shopping: Just north of Thousand Oaks is Camarillo Outlets, home to 160 high-end outlet stores with popular brands and products for every interest and style.



URBAN

ELS ON CAMPUS

Four-Week Courses	English for Academic Purposes, Semi-Intensive English, American Explorer
Options Available	Class Visitation, Course Auditing, Conversation Partnerships
Housing Options	Student Residence (on-campus), Homestay
Minimum Age	14
Host Institution	Private; Enrollment 4,205 Waive TOEFL® for ELS graduates*
Ranking	<i>U.S. News & World Report: #16 of "Best Regional Universities – West" – 2017</i>
Sample Majors Included	Undergraduate: Biology; Business Administration; Communications; Exercise Science; Psychology Graduate: Business Administration; Information Technology
Address	203 Faculty Street, Mattson House Thousand Oaks, California 91360 U.S.A.

*Accepted ELS Level and applicable degree program(s) vary by institution.





For more information on this Center, visit: ELS.EDU/CLEVELAND | UNIVERSITYSEARCH.COM/CASE

Case Western Reserve University

Cleveland, Ohio

ELS/Cleveland is located on the campus of Case Western Reserve University, a prestigious private university known for its medical, business, and law schools. Get to know the friendly people of Northwest Ohio at the many theaters, restaurants, shows, and sporting events of the Cleveland city center, about 10 minutes from the university campus. For relaxation, the calm and serene Lake Erie coast beaches and parks are not far away.

Great Things to See and Do

Rock and Roll Hall of Fame and Museum: Join visitors and music fans from around the world to learn about the history and continuing significance of rock and roll.

Cedar Point: Located at the edge of Lake Erie, about an hour and a half's drive from downtown Cleveland, the amusement park boasts the largest number of roller coasters in the world.

Downtown Cleveland: Home to three entertainment districts – East Fourth Street, the Warehouse District, and Playhouse Square – Cleveland has the country's largest performing arts center outside of New York City.



URBAN

ELS ON CAMPUS

Four-Week Courses	English for Academic Purposes, Semi-Intensive English, American Explorer
Options Available	Conversation Partnerships
Housing Options	Student Residence (off-campus), Homestay
Minimum Age	16
Host Institution	Private; Enrollment 10,771 Waive TOEFL® for ELS graduates*
Ranking	<i>U.S. News & World Report: #37 of "Best National Universities" – 2016</i>
Sample Majors Included	Graduate: Intellectual Property Law; International Business Law; U.S. & Global Legal Studies
Address	11321 Juniper Road, Stone Commons, Room 109 Cleveland, Ohio 44106 U.S.A.

*Accepted ELS Level and applicable degree program(s) vary by institution; Case Western Reserve University's law school accepts ELS EAP Level 112 for its LLM program only.





For more information on this Center, visit: ELS.EDU/CLEMSON | UNIVERSITYSEARCH.COM/CLEMSON

Clemson University Center of Greenville

Greenville, South Carolina

ELS/Clemson – Greenville is located at the University Center of Greenville (UCG) in Greenville, South Carolina. Greenville is a growing city full of natural beauty and charming culture located halfway between the cities of Atlanta, Georgia, and Charlotte, North Carolina. The UCG, complete with smart classrooms and a virtual library, is a satellite campus of Clemson's School of Nursing, Public Health, and Education, and also houses offices and classrooms for other universities and colleges.

Great Things to See and Do

Falls Park on the Reedy: This large regional park in Greenville's historic West End is complete with gardens, waterfalls, and the Swamp Rabbit Trail, a walking and biking trail that travels through the entire city.

Peace Center for the Performing Arts: The Peace Center hosts year-round performing arts and cultural events, including Broadway musicals, concerts and plays.

Paris Mountain: Bikers, swimmers, picnickers, wildlife-watchers, and hikers keep this state park bustling year-round.



URBAN

Four-Week Courses	English for Academic Purposes, Semi-Intensive English, American Explorer
Options Available	Class Visitation, Course Auditing, Concurrent Enrollment, Conversation Partnerships
Housing Options	Student Residence (off-campus), Homestay
Minimum Age	16
Host Institution	Public; Enrollment 22,114 Waive TOEFL® for ELS graduates*
Ranking	<i>U.S. News & World Report: #21 of "Top Public National Universities" – 2015</i>
Sample Majors Included	Graduate: Business Administration; Computer Science; Environmental Engineering and Science
Address	225 South Pleasantburg Drive, The Clemson Suite Greenville, South Carolina 29607 U.S.A.

*Accepted ELS Level and applicable degree program(s) vary by institution.





For more information on this Center, visit: ELS.EDU/MYRTLEBEACH | UNIVERSITYSEARCH.COM/COASTALCAROLINA

Coastal Carolina University

Myrtle Beach, South Carolina

ELS/Myrtle Beach, based on the beautiful campus of Coastal Carolina University in Conway, South Carolina, is minutes away from the sandy Atlantic Ocean beaches and unlimited entertainment of tourist hub Myrtle Beach. You can easily get involved in the 180+ campus student organizations, practice your English, and meet some of the university's 10,000 students from 60 countries. The area's relaxed beach culture and Southern hospitality will instantly make you feel welcome.

Great Things to See and Do

Myrtle Beach: Myrtle Beach is the heart of the Grand Strand, a stretch of beach that features many major attractions, such as the Myrtle Beach Boardwalk, Family Kingdom Amusement Park, Myrtle Waves Waterpark, the Carolina Opry and plenty of shopping.

Brookgreen Gardens: Brookgreen Gardens is one of Myrtle Beach's top attractions and home to some of the finest examples of American figurative sculpture in the world.

Ripley's® Aquarium: The 85,000-square-foot aquarium is part of the Broadway at the Beach complex and offers a number of aquatic exhibitions, including a marine life petting zoo.



SUBURBAN

ELS ON CAMPUS

Four-Week Courses	English for Academic Purposes, Semi-Intensive English, American Explorer
Options Available	Conversation Partnerships
Housing Options	Student Residence (on-campus), Homestay
Minimum Age	17
Host Institution	Public; Enrollment 10,253 Waive TOEFL® for ELS graduates*
Ranking	<i>U.S. News & World Report: #63 of "Top Public Regional Schools in the South" – 2016</i>
Sample Majors Included	Undergraduate: Accounting; Business Administration; Computer Science; Graphic Design; Hospitality, Resort and Tourism Management Graduate: Accounting; Business Administration; Teaching
Address	386 University Boulevard, Kearns Hall 207 Conway, South Carolina 29526 U.S.A.

*Accepted ELS Level and applicable degree program(s) vary by institution.





For more information on this Center, visit: ELS.EDU/RIVERDALE | UNIVERSITYSEARCH.COM/MOUNTSAINTVINCENT

College of Mount Saint Vincent

Riverdale, New York

ELS/New York – Riverdale is on the beautiful campus of the College of Mount Saint Vincent (CMSV), overlooking the Hudson River. The campus is located in the Riverdale section of New York City, a safe, residential community that offers an ideal setting for study under 40 minutes away from the cultural, entertainment and business opportunities of Manhattan. Spend your free time visiting attractions like the Statue of Liberty, Central Park, the Metropolitan Museum, and more.

Great Things to See and Do

The Bronx Zoo: Come to the largest urban zoo in the world, featuring over 4,000 animals in large, realistic reproductions of their natural habitats.

Yankee Stadium: Watching a game here is a must for any sports fan, as is taking a stroll through the hallowed Monument Park, where the greatest of the “Bronx Bombers” are honored.

New York Botanical Garden: These magnificent gardens display over 18,000 different species from around the world, including a collection of endangered plants.



ELS ON CAMPUS

Four-Week Courses	English for Academic Purposes, General English, Semi-Intensive English, American Explorer
Options Available	Class Visitation, Concurrent Enrollment, Conversation Partnerships
Housing Options	Student Residence (on-campus), Homestay
Minimum Age	14
Host Institution	Private; Enrollment 1,800 Waive TOEFL® for ELS graduates*
Ranking	<i>U.S. News & World Report: #120 of “Top Regional Universities of the North” – 2015</i>
Sample Majors Included	Undergraduate: Business Administration; Communications; Mathematics; Nursing; Psychology Graduate: Business Administration; Nursing; Urban Education
Address	6301 Riverdale Avenue, 5th Floor, Founders Hall Riverdale, New York 10471 U.S.A.

*Accepted ELS Level and applicable degree program(s) vary by institution.





For more information on this Center, visit: ELS.EDU/PORTLAND | UNIVERSITYSEARCH.COM/CU-PORTLAND

Concordia University

Portland, Oregon

ELS/Portland is located on the Concordia University campus, less than 30 minutes from downtown Portland. Portland is the fourth-largest city on the West Coast, and is home to galleries, boutiques, shopping, and chic restaurants. *Forbes* magazine recently voted Portland the second “Safest City in the USA” and “America’s Best Downtown.” An award-winning airport, efficient light rail system and pedestrian-friendly central city make it easy to see the sights, meet locals, and navigate around town.

Great Things to See and Do

Downtown Cultural District: Enjoy the history and personality of the Cultural District by visiting the area’s museums, theaters, cafes, fountains, and food carts.

The Great Outdoors: Portland is surrounded by natural splendor, with the Oregon Coast, Mount Hood, and the Columbia River Gorge all within 90 minutes of the city.

Pioneer Courthouse Square: This brick-lined downtown Portland urban park is home to year-round events and attractions, including the Portland Farmers Market, outdoor movie screenings, live music, and seasonal parades and festivals.



DOWNTOWN

ELS ON CAMPUS

Four-Week Courses	English for Academic Purposes, General English, Semi-Intensive English, American Explorer
Options Available	Class Visitation, Course Auditing, Concurrent Enrollment, Conversation Partnerships
Housing Options	Student Residence (on-campus), Homestay
Minimum Age	14
Host Institution	Private; Enrollment 7,000 Waive TOEFL® for ELS graduates*
Ranking	<i>U.S. News & World Report: #80 of “Top Universities in the Western Region Division” – 2014</i>
Sample Majors Included	Undergraduate: Biology; Business; Exercise and Sport Science; Marketing; Psychology Graduate: Business Administration; Educational Leadership; Teaching English as a Second Language (TESL)
Address	2811 NE Holman Street, Centennial Hall, Room 10 Portland, Oregon 97211 U.S.A.

*Accepted ELS Level and applicable degree program(s) vary by institution.





For more information on this Center, visit: ELS.EDU/CHICAGO | UNIVERSITYSEARCH.COM/DOM

Dominican University

Chicago, Illinois

ELS/Chicago is on the gorgeous campus of Dominican University in the vibrant suburb of River Forest, Illinois, only 30 minutes from all the excitement and culture of downtown Chicago. In nearby Chicago, the Magnificent Mile and Navy Pier offer stores and restaurants within walking distance of Lake Michigan. Millennium Park and Grant Park feature summer musical festivals and concerts. In winter, these parks transform into glittering ice-skating rinks below The Bean.

Great Things to See and Do

Museums: Chicago's museums rank among the best in the world, including the Adler Planetarium and Astronomy Museum, the Art Institute of Chicago, and the Field Museum of Natural History.

Sports: Professional teams include the Chicago Bulls (basketball), Chicago Cubs and Chicago White Sox (baseball), Chicago Bears (football), and Chicago Blackhawks (hockey).

Millennium Park: Hundreds of free events, including concerts, exhibitions, tours, and family activities, take place here each year. The park is in the heart of the city, just blocks from the Magnificent Mile, one of the most famous shopping districts in the world.



URBAN

ELS ON CAMPUS

Four-Week Courses	English for Academic Purposes, General English, Semi-Intensive English, American Explorer
Options Available	Business English, Class Visitation, Course Auditing, Concurrent Enrollment, Conversation Partnerships
Housing Options	Student Residence (on-campus), Student Residence (off-campus), Homestay
Minimum Age	16
Host Institution	Private; Enrollment 3,696 Waive TOEFL® for ELS graduates*
Ranking	<i>U.S. News & World Report has recognized Dominican as a top-tier university for 20 consecutive years.</i>
Sample Majors Included	Undergraduate: Accounting; Business; Computer Science; Engineering; Mathematics Graduate: MBA/Accounting; Library and Information Science; Social Work
Address	7200 West Division Street River Forest, Illinois 60305 U.S.A.

*Accepted ELS Level and applicable degree program(s) vary by institution.





For more information on this Center, visit: ELS.EDU/SANFRANCISCONORTHBAY | UNIVERSITYSEARCH.COM/DOMINICAN

Dominican University of California

San Rafael, California

ELS/San Francisco – North Bay is located on the beautifully landscaped campus of Dominican University of California in the Northern California city of San Rafael. The campus is easily accessible to San Francisco by public bus and ferry. The picturesque city of San Rafael is safe and beautiful, with many chances to experience American culture and to explore nature. Hiking and biking trails lead from the campus to the stunning and world-famous San Francisco Bay.

Great Things to See and Do

Muir Woods National Monument: The home of California’s renowned and beloved 115-meter redwood forest is only 30 minutes north of San Francisco.

Alcatraz: A must-see for history fans, the former penitentiary – now a museum – sits on a small, rocky island in the heart of San Francisco Bay.

Six Flags Discovery Kingdom: This theme park offers sensational wildlife shows and interactive and educational animal encounters, including the only “swim with dolphins” program in Northern California.



SUBURBAN

ELS ON CAMPUS

Four-Week Courses	English for Academic Purposes, General English, Semi-Intensive English, American Explorer
Options Available	Class Visitation, Course Auditing, Concurrent Enrollment, Conversation Partnerships
Housing Options	Student Residence (off-campus), Homestay
Minimum Age	14
Host Institution	Private; Enrollment 2,000 Waive TOEFL® for ELS graduates*
Ranking	<i>U.S. News & World Report: #15 of “Best Regional Universities of the West” – 2015</i>
Sample Majors Included	Undergraduate: Biological Sciences; Business Administration; Chemistry; Communications and Media Studies; International Business Graduate: Business Administration; Counseling Psychology; Education
Address	190 Palm Avenue, Pennafort Hall San Rafael, California 94901 U.S.A.

*Accepted ELS Level and applicable degree program(s) vary by institution.





For more information on this Center, visit: ELS.EDU/JOHNSONCITY | UNIVERSITYSEARCH.COM/ETSU

East Tennessee State University

Johnson City, Tennessee

ELS/Johnson City is located on the campus of East Tennessee State University, the fourth-largest public university in Tennessee. The city is safe, welcoming to international travelers, and family-friendly. Enjoy the city's history, downtown art galleries, diverse annual festivals, shopping, dining, and world-famous music culture. The Appalachian Mountains provide plentiful opportunities for outdoor activities and adventures in the area, including skiing, rafting, fishing, hiking, and observing the area's stunning waterfalls.

Great Things to See and Do

Smoky Mountain National Park: This National Park and UNESCO World Heritage Site is known for its natural beauty, historical sites, fishing, hiking, and camping.

Bristol Motor Speedway: About a 30-minute drive from ETSU is one of the most popular NASCAR tracks, home to the enormously popular Sprint Cup Series race and the Food City 500.

Buffalo Mountain Park: This 300-hectare nature preserve is popular with outdoor adventurers, hikers and picnickers.



ELS ON CAMPUS

Four-Week Courses	English for Academic Purposes, Semi-Intensive English, American Explorer
Options Available	Class Visitation, Concurrent Enrollment, Conversation Partnerships
Housing Options	Student Residence (on-campus), Homestay
Minimum Age	16
Host Institution	Public; Enrollment 14,587 Waive TOEFL® for ELS graduates*
Ranking	<i>Forbes: among the "Forbes List of Top Colleges" – 2015</i>
Sample Majors Included	Undergraduate: Allied Health: Cardiopulmonary Science/ Radiography; Computing; General Engineering; Engineering Technology; Biomedical/Electronics; Industrial Technology Graduate: Chemistry; Early Childhood Education; Public Administration
Address	503 South Dossett Drive, Hutcheson #208 Johnson City, Tennessee 37614 U.S.A.

*Accepted ELS Level and applicable degree program(s) vary by institution.





For more information on this Center, visit: ELS.EDU/RICHMONDKENTUCKY | UNIVERSITYSEARCH.COM/EASTERNKENTUCKY

Eastern Kentucky University

Richmond, Kentucky

ELS/Richmond – Kentucky is on the safe and friendly campus of Eastern Kentucky University, a regional public institution in the heart of welcoming and historic Richmond, Kentucky. With a population of approximately 34,000 people, Richmond is the sixth-largest city in the state of Kentucky. Enjoy the 200+ on-campus student organizations, the university's extensive recreation centers, Kentucky's rich history, and the area's outdoor beauty. Charming downtown Richmond is home to shopping, dining, and nightlife.

Great Things to See and Do

Lexington: Known as the "Horse Capital of the World," Kentucky's second-largest city is full of Southern charm, history, art galleries, eclectic dining options, and natural beauty.

Red River Gorge: Experience rock climbing and witness the beauty of the Natural Bridge, a sandstone rock formation 20 meters high.

Paradise Cove Water Park: Enjoy fun in the sun at Paradise Cove, where you can immerse yourself in an eight-lane pool with diving boards and multiple slides.



ELS ON CAMPUS

Four-Week Courses	English for Academic Purposes, Semi-Intensive English, American Explorer
Options Available	Class Visitation, Concurrent Enrollment, Conversation Partnerships
Housing Options	Student Residence (on-campus), Homestay
Minimum Age	16
Host Institution	Public; Enrollment 16,432 Waive TOEFL® for ELS graduates*
Ranking	<i>U.S. News & World Report: #35 of "Top Public Regional Schools in the South" – 2016</i>
Sample Majors Included	Undergraduate: Accounting; Aerospace Management – Pro-Flight; Computer Science; Fine Arts; Forensic Science Graduate: Business Administration; Career & Technical Education; Public Health
Address	521 Lancaster Avenue, 103 Crabb, Suite 111 Richmond, Kentucky 40475 U.S.A.

*Accepted ELS Level and applicable degree program(s) vary by institution.





For more information on this Center, visit: ELS.EDU/STPETERSBURG | UNIVERSITYSEARCH.COM/ECKERD

Eckerd College

St. Petersburg, Florida

ELS/St. Petersburg is located on the beautiful, spacious waterfront campus of Eckerd College on Florida's tropical west coast. St. Petersburg, often called the "Sunshine City," is known for its mild year-round climate, pristine white sand beaches and spectacular sunsets over the Gulf of Mexico. The city is home to world-famous museums, thrilling nightlife, and opportunities for water sports, and all of Florida's major theme parks are within a 90-minute drive.

Great Things to See and Do

Beaches: Reach Florida's famous white sand beaches and clear blue water in only a five-minute drive from the Center!

Downtown: Experience local culture firsthand on the first Friday of each month, when downtown fills with street musicians, vendors, and outdoor activities.

Entertainment: Florida's world-famous theme parks and water parks are all within a 90-minute drive, including Walt Disney World Resort®, Universal Studios Florida®, SeaWorld Orlando® and Busch Gardens®.



SUBURBAN

ELS ON CAMPUS

Four-Week Courses	English for Academic Purposes, General English, Semi-Intensive English, American Explorer
Options Available	TEFL Certification, Class Visitation, Course Auditing, Concurrent Enrollment, Conversation Partnerships
Housing Options	Student Residence (on-campus), Homestay
Minimum Age	14
Host Institution	Private; Enrollment 1,800 Waive TOEFL® for ELS graduates*
Ranking	<i>U.S. News & World Report: among the "Top National Liberal Arts Colleges" – 2016</i>
Sample Majors Included	Undergraduate: International Business; International Relations and Global Affairs; Environmental Studies; Marine Science; Psychology
Address	4200 54th Avenue South St. Petersburg, Florida 33711 U.S.A.

*Accepted ELS Level and applicable degree program(s) vary by institution.





For more information on this Center, visit: ELS.EDU/TEANECK | UNIVERSITYSEARCH.COM/FDU

Fairleigh Dickinson University

Teaneck, New Jersey

ELS/Teaneck is situated on the Metropolitan Campus of Fairleigh Dickinson University, a short distance from the center of Teaneck, New Jersey. The Hackensack River runs through the center of campus, and the surrounding area is full of parks, diverse restaurants, and shopping malls. Teaneck is in a beautiful and safe area under an hour from the energy of New York City, and its ethnically diverse community is a welcoming environment for international students.

Great Things to See and Do

Statue of Liberty and Ellis Island Immigration Museum: Both sites are just a short ferry ride from downtown New York City.

Liberty Science Center: Located in nearby Jersey City, New Jersey, Liberty Science Center provides amazing interactive experiences that explore global environmental issues and local scientific phenomena.

Day Trips/Weekends Away: New York City is less than an hour away from campus by train.



URBAN

ELS ON CAMPUS

Four-Week Courses	English for Academic Purposes, Semi-Intensive English, American Explorer
Options Available	Class Visitation, Course Auditing, Concurrent Enrollment, Conversation Partnerships
Housing Options	Student Residence (on-campus), Homestay
Minimum Age	18
Host Institution	Private; Enrollment 8,824 Waive TOEFL® for ELS graduates*
Ranking	<i>U.S. News & World Report: among the "Best Universities in the North Region" – 2016</i>
Sample Majors Included	Undergraduate: Business Management; Computer Science; Hotel and Restaurant Management; Mechanical Engineering and Technology Graduate: Business Management; Electric (E) Commerce; Teaching English to Speakers of Other Languages (TESL/TEFL)
Address	1000 River Road, Robison Hall, 4th Floor, 1040 University Circle Teaneck, New Jersey 07666 U.S.A.

*Accepted ELS Level and applicable degree program(s) vary by institution.





For more information on this Center, visit: ELS.EDU/MELBOURNE | UNIVERSITYSEARCH.COM/FIT

Florida Institute of Technology

Melbourne, Florida

ELS/Melbourne is located on the beautiful campus of Florida Institute of Technology, a dynamic research institution on Central Florida's innovative Space Coast. The campus is just minutes from gorgeous and relaxing white sand beaches, and approximately an hour's drive from Florida's famous theme parks and water parks. Nearby, NASA's John F. Kennedy Space Center maintains an informative Visitor Center where you can learn about the history of the NASA space program.

Great Things to See and Do

Day Trips/Weekends Away: You are just a short drive away from Walt Disney World Resort®, Magic Kingdom, Universal Islands of Adventure®, SeaWorld Orlando® and the Kennedy Space Center.

Historic Downtown Melbourne: Located only minutes from ELS/Melbourne, historic downtown Melbourne offers a wide variety of dining options and quaint boutiques.

Kennedy Space Center: NASA's launch headquarters is the place to tour launch areas, meet an astronaut, see giant rockets and train in spaceflight simulators.



SUBURBAN

ELS ON CAMPUS

Four-Week Courses	English for Academic Purposes, General English, Semi-Intensive English, American Explorer
Options Available	Class Visitation, Conversation Partnerships
Housing Options	Student Residence (on-campus), Homestay
Minimum Age	14
Host Institution	Private; Enrollment 4,600 Waive TOEFL® for ELS graduates*
Ranking	<i>U.S. News & World Report: #161 of "Top National Universities" – 2016</i>
Sample Majors Included	Undergraduate: Electrical, Civil, and Chemical Engineering; Aviation Management Graduate: Biotechnology; Computer Science; Electrical Engineering
Address	150 West University Boulevard Melbourne, Florida 32901 U.S.A.

*Accepted ELS Level and applicable degree program(s) vary by institution.





For more information on this Center, visit: ELS.EDU/SILICONVALLEY | UNIVERSITYSEARCH.COM/FOOTHILL | UNIVERSITYSEARCH.COM/DEANZA

Foothill College and De Anza College

Silicon Valley, California

ELS/Silicon Valley is located in the middle of California technology hub Silicon Valley in the city of Cupertino, close to San Francisco and San Jose. Cupertino is a highly educated small town, and many of the world's largest technology corporations, including Apple, Google, Facebook and Microsoft, have offices here. Silicon Valley is also home to many ELS partner schools, including De Anza College, located just across the street from the Center.

Great Things to See and Do

The Tech Museum of Innovation: This hands-on technology and science museum is a nonprofit learning resource established to inspire the innovator in everyone.

San Jose Museum of Art: The collection focuses on 20th- and 21st-century works in a variety of media – painting, video installation, photography, and more.

San Francisco: All the culture, cuisine, sights and excitement of San Francisco are only about one hour away.



Four-Week Courses	English for Academic Purposes, Semi-Intensive English, American Explorer
Options Available	Class Visitation, Conversation Partnerships
Housing Options	Student Residence (off-campus), Homestay
Minimum Age	14
Host Institution	Public; Enrollment 36,000 (both campuses) Waive TOEFL® for ELS graduates*
Sample Majors Included	Undergraduate: De Anza: Biological Sciences; Business Administration; Communication Studies; Film/Video Production Foothill: Business Administration; Computer Science; Economics; Engineering; Theater Arts
Address	21269 Stevens Creek Boulevard, Suite 620 Cupertino, California 95014 U.S.A.

*Accepted ELS Level and applicable degree program(s) vary by institution.





For more information on this Center, visit: ELS.EDU/DENVER | UNIVERSITYSEARCH.COM/FRONTRANGE

Front Range Community College

Denver, Colorado

ELS/Denver is located on the campus of Front Range Community College (FRCC) in the clean and safe Denver suburb of Westminster. FRCC, made up of three campuses, is the largest community college in Colorado. Denver is ranked one of the healthiest and most educated cities in the United States. The city is situated against the spectacular Rocky Mountains and is home to exciting nightlife, diverse restaurants, a rich arts culture, and limitless outdoor adventure.

Great Things to See and Do

16th Street Mall – Pedestrian Mall: Lined with trees and flowers, this walkway is a festive pedestrian promenade with shops, outdoor cafes and the best people-watching in Denver.

Red Rocks Park and Amphitheatre: This park offers breathtaking views of the Rocky Mountains, secluded hiking trails and stunning sandstone cliffs. The park surrounds the iconic natural red stone amphitheater, where the world's most famous musicians perform all summer long.

Colorado Ski Resorts: Heavy snowfall in the majestic Rocky Mountains makes the state's ski resorts the perfect destination for skiers and snowboarders of all abilities.



ELS ON CAMPUS

Four-Week Courses	English for Academic Purposes, Semi-Intensive English, American Explorer
Options Available	Class Visitation, Course Auditing, Concurrent Enrollment, Conversation Partnerships
Housing Options	Student Residence (off-campus), Homestay
Minimum Age	16
Host Institution	Public; Enrollment 6,500 Waive TOEFL® for ELS graduates*
Sample Majors Included	Undergraduate: Accounting; Business; Computer Information Systems; Liberal Arts and Studies; Science
Address	3645 West 112th Avenue, #B1705 Westminster, Colorado 80031 U.S.A.

*Accepted ELS Level and applicable degree program(s) vary by institution.





For more information on this Center, visit: ELS.EDU/GRANDRAPIDS | UNIVERSITYSEARCH.COM/GVSU

Grand Valley State University

Grand Rapids, Michigan

ELS/Grand Rapids is on the campus of Grand Valley State University in Allendale, Michigan, in the middle of the bustling campus of over 25,000 students. Nearby Grand Rapids, the second-largest city in the state, is safe and welcoming, with many opportunities for shopping, dining out and visiting museums. Allendale is located within 20 minutes of the beautiful beaches of Lake Michigan and is just two hours from Chicago and Detroit.

Great Things to See and Do

The Great Outdoors: With beaches, boating, hiking, and biking, the area is rich with outdoor fun during warm weather; during colder months there is ice-skating downtown and skiing and snowboarding nearby.

The Art Scene: Grand Rapids has a strong arts culture, and hosts the annual Art Prize competition, which attracts half a million visitors each year.

Beautiful Beaches: The Lake Michigan shoreline is known as one of the best lakefront shorelines in the world.



ELS ON CAMPUS

Four-Week Courses	English for Academic Purposes, Semi-Intensive English, American Explorer
Options Available	Class Visitation, Course Auditing, Concurrent Enrollment, Conversation Partnerships
Housing Options	Student Residence (on-campus), Homestay
Minimum Age	16
Host Institution	Public; Enrollment 25,325 Waive TOEFL® for ELS graduates*
Sample Majors Included	Undergraduate: Business; Computer Science; Engineering; Hospitality and Tourism Management; International Relations
Address	1150 Au Sable Hall, 1 Campus Drive Allendale, Michigan 49401 U.S.A.

*Accepted ELS Level and applicable degree program(s) vary by institution.





For more information on this Center, visit: ELS.EDU/HONOLULU | UNIVERSITYSEARCH.COM/HPU

Hawai'i Pacific University

Honolulu, Hawaii

ELS/Honolulu is located on the exciting, state-of-the-art downtown campus of Hawai'i Pacific University in the beautiful, tropical paradise of Honolulu, Hawaii. With clear, blue water, clean air, and comfortable, summerlike temperatures year-round, the city is an ideal location to study English while learning about Hawaiian and U.S. cultures, exploring, and going on adventures. Kayak or sail in the ocean, hike an extinct volcano, or easily visit the other Hawaiian islands on weekends!

Great Things to See and Do

Waikiki Beach: This famous beach is the go-to spot for its soft, honey-colored sand and high waves for surfing during the summer months.

Diamond Head: Diamond Head's ridgeline is one of the most recognizable features of Oahu's skyline and home to the island's most scenic hiking trails.

Manoa Falls: This 45-meter vertical drop waterfall in Honolulu is accessible only by hiking 2.4 kilometers from the nearest road on a well-cleared path.



ELS ON CAMPUS

Four-Week Courses	English for Academic Purposes, Semi-Intensive English, American Explorer
Options Available	Class Visitation, Course Auditing, Concurrent Enrollment, Conversation Partnerships
Housing Options	Student Residence (off-campus), Homestay
Minimum Age	14
Host Institution	Private; Enrollment 6,739 Waive TOEFL® for ELS graduates*
Ranking	<i>Washington Monthly: #164 among National schools of the "Best Bang for the Buck" in the West – 2015</i>
Sample Majors Included	Undergraduate: Business Administration; Hospitality and Tourism Management; International Studies; Marine Biology Graduate: Business Administration; Information Systems; Teaching English to Speakers of Other Languages (TESOL)
Address	1188 Fort Street, MP 133 Honolulu, Hawaii 96813 U.S.A.

*Accepted ELS Level and applicable degree program(s) vary by institution.





For more information on this Center, visit: ELS.EDU/NYHOFSTRA | UNIVERSITYSEARCH.COM/HOFSTRA

Hofstra University

Hempstead, New York

ELS/New York – Hofstra is located on the campus of Hofstra University, a beautiful, state-of-the-art campus in Hempstead, New York, just 40 minutes from New York City. You will enjoy a traditional campus experience, ideal for studying, while also taking advantage of the nearby networking, internships, entertainment and culture of Manhattan. The campus is close to Long Island Railroad train stations, making it easy to travel around Long Island, into Manhattan, and beyond.

Great Things to See and Do

New York City and Other Nearby Cities: The energy, entertainment, and culture of Manhattan are an easy train ride away from the Hofstra campus. In addition, weekend trips are possible to other nearby cities such as Philadelphia, Boston, and Washington, D.C.

On-campus Culture and Beauty: Hofstra University, a certified arboretum, hosts multiple seasonal festivals throughout the year. You can also visit the Hofstra University Museum, home to thousands of works of art and outdoor sculptures from all around the world.

Jones Beach: Enjoy boating and swimming at Jones Beach, which is only about 20 minutes away from the Hofstra University campus.



SUBURBAN

ELS ON CAMPUS

Four-Week Courses	English for Academic Purposes, Semi-Intensive English, American Explorer
Options Available	Class Visitation, Course Auditing, Concurrent Enrollment, Conversation Partnerships
Housing Options	Student Residence (on-campus), Homestay
Minimum Age	18
Host Institution	Private; Enrollment 10,870 Waive TOEFL® for ELS graduates*
Ranking	<i>U.S. News & World Report:</i> #135 among "Best National Universities" – 2016
Sample Majors Included	Graduate: Accounting; Computer Science; Finance; Full-time MBA; International Business
Address	012 Memorial Hall, 126 Hofstra University Hempstead, New York 11549 U.S.A.

*Accepted ELS Level and applicable degree program(s) vary by institution.





For more information on this Center, visit: ELS.EDU/FORTWAYNE | UNIVERSITYSEARCH.COM/IPFW

Indiana University– Purdue University Fort Wayne

Fort Wayne, Indiana

ELS/Fort Wayne is located on the campus of Indiana University–Purdue University Fort Wayne (IPFW), a joint campus of Indiana University and Purdue University that offers high-quality programs from both universities. Fort Wayne is the second-largest city in Indiana. The family-friendly city is rich in culture, fine dining, museums, and galleries. The city contains parks and extensive trails that allow you to explore the area’s natural beauty on foot or bicycle.

Great Things to See and Do

Fort Wayne Trail System: The 80-mile network of trails stretches across Fort Wayne through neighborhoods, scenic areas, and along the banks of several rivers, making it ideal for biking, hiking, strolling, jogging and rollerblading.

Headwaters Park: The heart of downtown Fort Wayne hosts festivals nearly every weekend year-round.

Downtown Fort Wayne: The 90-square-block area is home to the cultural district, museums, Broadway shows, outdoor concerts, botanical gardens, a baseball stadium, cafés and shopping.



ELS ON CAMPUS

Four-Week Courses	English for Academic Purposes, Semi-Intensive English, American Explorer
Options Available	Class Visitation, Course Auditing, Concurrent Enrollment, Conversation Partnerships
Housing Options	Student Residence (on-campus), Homestay
Minimum Age	14
Host Institution	Public; Enrollment 13,214 Waive TOEFL® for ELS graduates*
Ranking	<i>U.S. News & World Report: among "Regional Universities of the Midwest" – 2015</i>
Sample Majors Included	Undergraduate: Biology; Business; Computer Science; Engineering; Media and Public Communication Graduate: Biology; Business Administration (MBA); Engineering
Address	2101 E. Coliseum Boulevard, MCB-117 Fort Wayne, Indiana 46805 U.S.A.

*Accepted ELS Level and applicable degree program(s) vary by institution.





For more information on this Center, visit: ELS.EDU/INDIANAPOLIS

Indianapolis – City Center

Indianapolis, Indiana

ELS/Indianapolis is located in downtown Indianapolis, easily accessible to the energy of the city's cultural and business hub. The capital of Indiana, Indianapolis is the second-largest city in the Midwest, with a population of over 850,000 people. Due to its location in the country's heartland, reasonable costs, and modern facilities, downtown Indianapolis attracts international businesses and national conventions. The Center is just a few steps from businesses, shopping, entertainment, and world-class sports.

Great Things to See and Do

Canal and White River State Park: The nation's only urban state park includes popular visitor spots such as the White River Gardens, Hilbert Conservatory, Indianapolis Canal Walk and Indianapolis Zoo.

Indianapolis Motor Speedway: Opened in 1909, this massive Indianapolis attraction is also home to the Brickyard Crossing golf course and the Indianapolis Motor Speedway Hall of Fame Museum.

Professional Sporting Arenas: Located in downtown Indianapolis, Lucas Oil Stadium, Bankers Life Fieldhouse, and Victory Field are great places to visit for fans of football, basketball, and baseball.



Four-Week Courses	English for Academic Purposes, Semi-Intensive English, American Explorer
Options Available	Class Visitation, Conversation Partnerships
Housing Options	Student Residence (off-campus), Homestay
Minimum Age	16
Address	151 West Ohio Street, Suite 120 Indianapolis, Indiana 46204 U.S.A.





For more information on this Center, visit: ELS.EDU/SANJOSE | UNIVERSITYSEARCH.COM/ITU

International Technological University

San Jose, California

ELS/San Jose is located at International Technological University in San Jose, California. San Jose is the third-largest city in California, and the largest city in the San Francisco Bay Area. The diverse and creative Northern California city is rich with museums, theaters, public works of art, professional music and dance, and historical sites. The city has over 200 parks, golf courses, a lake, and 50+ miles of nature trails for sunny days spent outdoors.

Great Things to See and Do

Museums and Cultural Attractions: San Jose is a vibrant and diverse city full of learning opportunities for all ages. Visit museums such as the Tech Museum of Innovation and the San Jose Museum of Art. Enjoy the city's opera and ballet, watch live theater, or visit one of the city's art galleries.

Beaches and Lakes: San Jose is close to many beaches and lakes. And because the weather is favorable practically year-round, you can take advantage of the outdoors regardless of the time of year.

San Francisco and Silicon Valley: San Jose is at the heart of Silicon Valley, and is a quick and easy trip to all the excitement, shopping, culture and opportunity of San Francisco.



ELS ON CAMPUS

Four-Week Courses	English for Academic Purposes, Semi-Intensive English, American Explorer
Options Available	Class Visitation, Concurrent Enrollment, Conversation Partnerships
Housing Options	Student Residence (off-campus), Homestay
Minimum Age	14
Host Institution	Private; Enrollment 1,176 Waive TOEFL® for ELS graduates*
Sample Majors Included	Graduate: Business Administration; Computer Engineering; Computer Science; Digital Arts; Electrical Engineering; Engineering Management; Software Engineering
Address	2711 North 1st Street San Jose, California 95134 U.S.A.

*Accepted ELS Level and applicable degree program(s) vary by institution.





For more information on this Center, visit: ELS.EDU/CHARLOTTE | UNIVERSITYSEARCH.COM/JWUCHARLOTTE

Johnson & Wales University

Charlotte, North Carolina

ELS/Charlotte is located next to the Johnson & Wales University – Charlotte Campus in Charlotte’s vibrant Uptown City Center, close to many cultural, sports, and entertainment attractions. Charlotte, the second-largest financial center in the U.S., is a medium-sized city but has big-city services and attractions. The city is between Washington, D.C., and Atlanta, Georgia, just two hours east of the Appalachian Mountains and just over three hours west of sparkling Carolina beaches.

Great Things to See and Do

U.S. National Whitewater Center: This Olympic-class training facility is home to the world’s largest man-made whitewater river, and offers rafting, kayaking, hiking, mountain biking, rock climbing and zip-lining.

Carowinds: This large theme park offers 60 world-class rides, shows, and attractions, including some of the best-rated roller coasters in the country.

Charlotte Motor Speedway/The NASCAR Hall of Fame: Charlotte and the surrounding area are home to 58 NASCAR racing teams. The speedway hosts numerous drag and track races during the year.



Four-Week Courses	English for Academic Purposes, General English, Semi-Intensive English, American Explorer
Options Available	Class Visitation
Housing Options	Student Residence (off-campus), Homestay
Minimum Age	14
Host Institution	Private; Enrollment 2,400 (total) Waive TOEFL® for ELS graduates*
Sample Majors Included	Undergraduate: Business Administration; Culinary Arts and Food Service Management; Hotel & Lodging Management; Marketing
Address	901 W. Trade Street, Suite 500 Charlotte, North Carolina 28202 U.S.A.

*Accepted ELS Level and applicable degree program(s) vary by institution.





For more information on this Center, visit: ELS.EDU/CHICAGOROMEVILLE | UNIVERSITYSEARCH.COM/LEWISU

Lewis University

Romeoville, Illinois

ELS/Chicago – Romeoville is located on the campus of Lewis University, a private university in the Chicago suburb of Romeoville, Illinois, about one hour away from Chicago. Interact with and get to know American students by participating in on-campus activities. Romeoville is a small community, complete with restaurants, shopping, movie theaters and parks. Local transportation makes it easy to reach local attractions in Romeoville, the city of Chicago, and the beaches of Lake Michigan.

Great Things to See and Do

Chicagoland Speedway: The speedway is a significant venue for major NASCAR events and is known to be one of NASCAR’s infamous “cookie cutter” tracks.

First Midwest Bank Amphitheatre: Located in nearby Tinley Park, Illinois, the amphitheater is one of the largest music venues in the Chicago area, with a capacity of up to 28,000 spectators.

Route 66: Known as the Main Street of America and one of the most famous roads in the U.S.A., Route 66 runs through Romeoville. It originally ran from Chicago to California, covering a total of 3,940 kilometers.



ELS ON CAMPUS

Four-Week Courses	English for Academic Purposes, Semi-Intensive English, American Explorer
Options Available	Class Visitation, Course Auditing, Concurrent Enrollment, Conversation Partnerships
Housing Options	Student Residence (on-campus), Homestay
Minimum Age	17
Host Institution	Private; Enrollment 6,600 Waive TOEFL® for ELS graduates*
Ranking	<i>U.S. News & World Report: #23 of "Top Regional Universities of the Midwest" – 2015</i>
Sample Majors Included	Undergraduate: Accounting; Aviation Flight; Business Administration; Computer Engineering; Finance Graduate: Aviation and Transportation; Business Administration; Information Security
Address	1 University Parkway Romeoville, Illinois 60446 U.S.A.

*Accepted ELS Level and applicable degree program(s) vary by institution.





For more information on this Center, visit: ELS.EDU/HOLLYWOOD | UNIVERSITYSEARCH.COM/LOSANGELESFILMSCHOOL

Los Angeles Film School

Hollywood, California

ELS/Hollywood is located on the ultramodern campus of the Los Angeles Film School in the entertainment hub of Hollywood, California. The ELS classrooms occupy the space where music legends like Elvis Presley and The Rolling Stones once recorded their music. Observe film screenings and famous speakers in the campus's THX-certified theater, and enjoy Los Angeles's year-round sunshine and easy access to beaches, downtown, nightlife, and famous recording and production studios.

Great Things to See and Do

The TCL Chinese Theater and the Hollywood Walk of Fame: This iconic Hollywood theater is a trip back in time to Hollywood's Golden Age, and just outside is the famous sidewalk where celebrated movie stars have left their hand- and footprints.

Griffith Park: The largest urban park in the U.S.A. is home to the Griffith Observatory, a public observatory that offers a planetarium, public telescopes, and the best view of the famous Hollywood Sign, also located in the park.

Universal Studios Hollywood®: One of the most popular attractions in the Los Angeles area, this amusement park features rides based on some of the best-known scenes and characters from film and television.



ELS ON CAMPUS

Four-Week Courses	English for Academic Purposes
Housing Options	Student Residence (off-campus), Homestay
Minimum Age	16
Host Institution	Private; Enrollment 2,500 Waive TOEFL® for ELS graduates*
Sample Majors Included	Undergraduate: Music Production (Associate); Animation (Bachelor's); Entertainment Business (Bachelor's); Film Production (Bachelor's)
Address	6363 Sunset Boulevard Hollywood, California 90028 U.S.A.

*Accepted ELS Level and applicable degree program(s) vary by institution.





For more information on this Center, visit: ELS.EDU/RUSTON | UNIVERSITYSEARCH.COM/LATECH

Louisiana Tech University

Ruston, Louisiana

ELS/Ruston is located on the campus of Louisiana Tech University, a Tier One university with great scholarships available to ELS students. The campus, set in the northern hills of Louisiana, is home to a diverse population of students representing nearly 70 countries. The people of Ruston are friendly and welcoming. Activities in Ruston include paintball, hiking, biking, fishing and many festivals. Students can also enjoy weekend visits to New Orleans and Dallas.

Great Things to See and Do

Festivals: Just one of many state and local annual festivals, every June the Louisiana Peach Festival features 200 artisans and vendors, a parade, an antique car show, a rodeo, a 5K run and a cooking contest.

Lincoln Parish Park: Ranked one of the best mountain bike trails in America, Lincoln Parish Park's 16-kilometer trail offers a challenging and exciting course.

Weekend Getaways: New Orleans, with its world-famous Cajun cuisine, jazz performances and historic French Quarter, is one of the most popular tourist destinations in the U.S.A.



ELS ON CAMPUS

Four-Week Courses	English for Academic Purposes, Semi-Intensive English, American Explorer
Options Available	Class Visitation, Conversation Partnerships
Housing Options	Student Residence (on-campus), Student Residence (off-campus), Homestay
Minimum Age	18
Host Institution	Public; Enrollment 11,515 Waive TOEFL® for ELS graduates*
Ranking	<i>U.S. News & World Report: among the "Top Public Schools of National Universities" – 2016</i>
Sample Majors Included	Undergraduate: Architecture; Biomedical Engineering; Computer Science; Cyber-Engineering; Professional Aviation (Pilot) Graduate: Biomedical Engineering; Molecular Science and Nanotechnology; Professional Accountancy
Address	305 Wisteria Street, Student Center 213, P.O. Box 3006 Ruston, Louisiana 71272 U.S.A.

*Accepted ELS Level and applicable degree program(s) vary by institution.





For more information on this Center, visit: ELS.EDU/MANHATTAN

Manhattan – City Center

New York, New York

ELS/New York – Manhattan is located in Lower Manhattan, in a neighborhood that borders Tribeca and the trendy SoHo district. You will have easy access to unlimited cultural resources right outside the Center, such as world-class art, theater, dining and shopping. Experience all the excitement Manhattan has to offer, including the world-famous Empire State Building, Broadway, Times Square, Fifth Avenue, Rockefeller Center, the Statue of Liberty, Central Park, Wall Street, and so much more!

Great Things to See and Do

Statue of Liberty/Ellis Island: The statue, a more than 204,000-kilogram gift from the people of France, is a must-see for any visitor.

New York Shopping: Fashion, modern art, used and new books, flea market finds, gourmet foods, fine jewelry, home accessories, designer handbags, antique furniture – it’s all available in New York City.

Museum of Modern Art (MoMA): Founded in 1929, MoMA, the first museum devoted to the modern era, showcases masters such as Matisse, Picasso and van Gogh.



Four-Week Courses	English for Academic Purposes, General English, Semi-Intensive English, American Explorer
Options Available	Business English, Complete Prep Program for the TOEFL iBT®
Housing Options	Student Residence (off-campus), Homestay
Minimum Age	16
Address	75 Varick Street, 3rd Floor New York, New York 10013 U.S.A.





For more information on this Center, visit: ELS.EDU/MILWAUKEE | UNIVERSITYSEARCH.COM/MARQUETTE

Marquette University

Milwaukee, Wisconsin

ELS/Milwaukee is located on the campus of Marquette University, a large private university that is ranked among the top in the country. Situated on the western shore of Lake Michigan, Milwaukee is the largest city in the state of Wisconsin. Over the years, Milwaukee has honored its rich heritage by preserving its historic neighborhoods while becoming home to an active arts scene, year-round festivals and events, and diverse dining options.

Great Things to See and Do

Harley-Davidson: Milwaukee is home to this maker of iconic and world-famous motorcycles. There is even a museum devoted to all things Harley.

Festivals: Milwaukee is known as the “City of Festivals,” offering cultural and musical festivals throughout the year.

Day Trips/Weekends Away: All the excitement of Chicago is just a 90-minute drive from downtown Milwaukee.

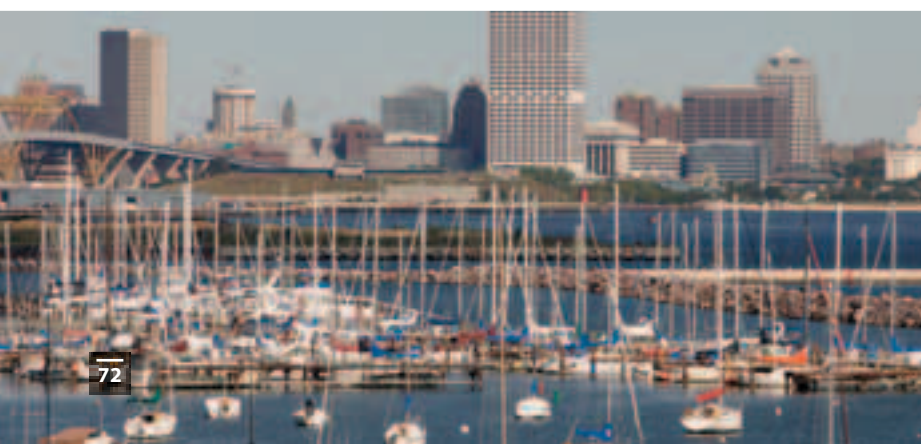


SUBURBAN

ELS ON CAMPUS

Four-Week Courses	English for Academic Purposes, Semi-Intensive English, American Explorer
Options Available	Class Visitation, Conversation Partnerships
Housing Options	Student Residence (on-campus), Homestay
Minimum Age	17
Host Institution	Private; Enrollment 11,400 Waive TOEFL® for ELS graduates*
Ranking	<i>U.S. News & World Report: #86 of “Top National Universities” – 2016</i>
Sample Majors Included	Undergraduate: Biomedical Science; Finance; Electrical/ Electronics Engineering; International Affairs; Supply Chain Management Graduate: Civil Engineering; Computing; Mechanical Engineering
Address	1834 W. Wisconsin Avenue Milwaukee, Wisconsin 53233 U.S.A.

*Accepted ELS Level and applicable degree program(s) vary by institution.





For more information on this Center, visit: ELS.EDU/LAKECHARLES | UNIVERSITYSEARCH.COM/MCNEESE

McNeese State University

Lake Charles, Louisiana

ELS/Lake Charles is located on the campus of McNeese State University, a public university and member of the University of Louisiana System. McNeese State University is located in the safe community of Lake Charles, one of the fastest-growing cities in Louisiana. The unique culture, as well as the year-round warm and sunny climate, of Southwest Louisiana will make you feel at home while you enjoy the area's restaurants, live music, and outdoor sports.

Great Things to See and Do

Festival Capital of Louisiana: Known as the Festival Capital of Louisiana, Lake Charles boasts over 75 fairs and festivals, including Mardi Gras, the Contraband Days Pirate Festival and the Cajun Music & Food Festival.

Creole Nature Trail All-American Road: Experience an outdoor adventure and explore this route through local wildlife habitats and refuges, swamps, and Gulf beaches.

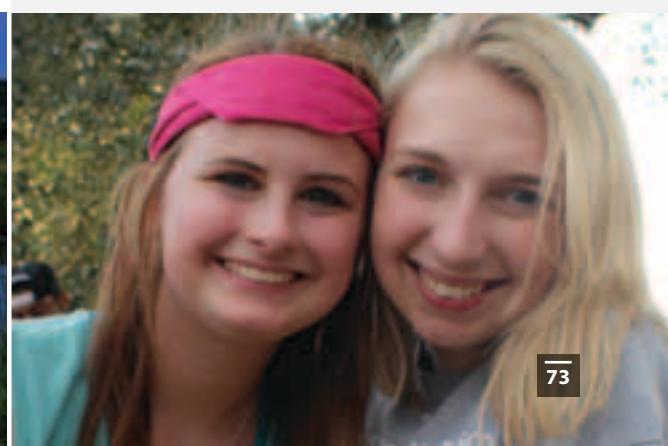
Museums and Cultural Attractions: Southwest Louisiana is rich in culture. Visit local art galleries and shows, enjoy live music, visit the Henning Cultural Center, or visit one of the seven area museums.



ELS ON CAMPUS

Four-Week Courses	English for Academic Purposes, Semi-Intensive English, American Explorer
Options Available	Class Visitation
Housing Options	Student Residence (on-campus), Homestay
Minimum Age	18
Host Institution	Public; Enrollment 8,162 Waive TOEFL® for ELS graduates*
Ranking	<i>U.S. News & World Report: #42 of "Top Public Regional Schools in the South" – 2016</i>
Sample Majors Included	Undergraduate: Accounting; Business Administration; Computer Science; Engineering; Finance Graduate: Business Administration; Chemistry; Engineering
Address	4205 Ryan Street, BBC 229 Lake Charles, Louisiana 70609 U.S.A.

*Accepted ELS Level and applicable degree program(s) vary by institution.





For more information on this Center, visit: ELS.EDU/NASHVILLE | UNIVERSITYSEARCH.COM/MTSU

Middle Tennessee State University

Nashville, Tennessee

ELS/Nashville is located on the campus of Middle Tennessee State University (MTSU) in Murfreesboro, one of Tennessee's fastest-growing major cities. With an enrollment of over 24,000 students, MTSU is the largest undergraduate university in Tennessee. The campus is located approximately 30 minutes from Nashville, four hours from Atlanta and three hours from Memphis, providing opportunities for cultural experiences such as live music, concerts and other programs, while maintaining a smaller city feel.

Great Things to See and Do

Explore Music City U.S.A.: There is far more to the music scene in Nashville than country music. If you are a music lover, this is your town!

Grand Ole Opry: The top attraction in Music City, the Opry showcases country music legends and newcomers.

Centennial Park: Nashville's premier park features the tallest indoor sculpture in the Western world – a life-size replica of the Parthenon – as well as a 1.6-kilometer walking trail, Lake Watauga, the Centennial Art Center, historical monuments, and more.



ELS ON CAMPUS

Four-Week Courses	English for Academic Purposes, Semi-Intensive English, American Explorer
Options Available	Class Visitation, Course Auditing, Conversation Partnerships
Housing Options	Student Residence (on-campus), Homestay
Minimum Age	16
Host Institution	Public; Enrollment 24,500 Waive TOEFL® for ELS graduates*
Ranking	<i>Forbes: among the "Forbes List of Top Colleges Overall" – 2015</i>
Sample Majors Included	Undergraduate: Actuarial Services; Biology; Business Administration; Computer Science; Recording Industry Graduate: Biology; Business Administration; Computer Science
Address	820 Fairview Avenue Murfreesboro, Tennessee 37130 U.S.A.

*Accepted ELS Level and applicable degree program(s) vary by institution.





For more information on this Center, visit: ELS.EDU/DEKALB | UNIVERSITYSEARCH.COM/NIU

Northern Illinois University

DeKalb, Illinois

ELS/DeKalb is located 100 kilometers west of Chicago on the main campus of Northern Illinois University (NIU), a world-class research institution in the heartland of the United States. DeKalb's low cost of living, safety, and seasonal outdoor activities make this location ideal for students with families. Enjoy the comfort of small-town America without missing the culture and excitement of nearby Chicago, one of the country's largest and most dynamic cities.

Great Things to See and Do

Northern Illinois University Anthropology Museum: The on-campus museum specializes in the cultures of Southeast Asia, New Guinea, and the Southwest and Plains Native Americans.

Midwest Museum of Natural History: Located in nearby Sycamore, the museum features over 100 mounted animals from North America and Africa.

Day Trips/Weekends Away: The energy and attractions of Chicago are only about an hour's drive away.



ELS ON CAMPUS

Four-Week Courses	English for Academic Purposes, Semi-Intensive English, American Explorer
Options Available	Course Auditing, Concurrent Enrollment, Conversation Partnerships
Housing Options	Student Residence (on-campus), Homestay
Minimum Age	14
Host Institution	Public; Enrollment 21,138 Waive TOEFL® for ELS graduates*
Ranking	<i>U.S. News & World Report: among "Top 200 National Universities" – 2015</i>
Sample Majors Included	Undergraduate: Accounting; Biological Sciences; Business Administration; Computer Science; Engineering Technology Graduate: Computer Science; Electrical Engineering; Mechanical Engineering
Address	385 Wirtz Drive, Health Services Building, 3rd Floor DeKalb, Illinois 60115 U.S.A.

*Accepted ELS Level and applicable degree program(s) vary by institution.





For more information on this Center, visit: ELS.EDU/OKLAHOMACITY | UNIVERSITYSEARCH.COM/OKCU

Oklahoma City University

Oklahoma City, Oklahoma

ELS/Oklahoma City is located on the Oklahoma City University campus in the exciting Uptown District of Oklahoma City. Oklahoma City is safe and friendly, and has one of the lowest costs of living in the country. Visit the Paseo Arts District with its trendy cafes, boutiques and galleries, or take the bus downtown to watch sports, visit clubs, take a Bricktown Canal cruise, or go to a museum or cultural event.

Great Things to See and Do

Museums: Oklahoma City has a variety of world-class museums, including the National Cowboy & Western Heritage Museum, American Banjo Museum, Science Museum of Oklahoma and Oklahoma City Museum of Art.

Sports: Cheer for the NBA's Oklahoma City Thunder basketball team, or witness the rivalry between the college football teams at the University of Oklahoma and Oklahoma State University.

Bricktown: This entertainment district, just east of downtown, includes the Bricktown Canal and dozens of restaurants and shops, and is close to all the major sports and concert venues.



URBAN

ELS ON CAMPUS

Four-Week Courses	English for Academic Purposes, Semi-Intensive English, American Explorer
Options Available	Class Visitation, Course Auditing, Concurrent Enrollment, Conversation Partnerships
Housing Options	Student Residence (on-campus), Homestay
Minimum Age	14
Host Institution	Private; Enrollment 4,000 Waive TOEFL® for ELS graduates*
Ranking	<i>U.S. News & World Report: #22 of "Best Regional Universities of the West" – 2016</i>
Sample Majors Included	Undergraduate: Business Administration; Music; Nursing; Software Engineering Graduate: Accelerated Master of Business Administration (MBA); Music; Teaching English to Speakers of Other Languages (TESOL)
Address	1915 NW 24th Street, Harris Hall Oklahoma City, Oklahoma 73106 U.S.A.

*Accepted ELS Level and applicable degree program(s) vary by institution.





For more information on this Center, visit: ELS.EDU/PITTSBURGH | UNIVERSITYSEARCH.COM/POINTPARK

Point Park University

Pittsburgh, Pennsylvania

ELS/Pittsburgh is located on the Point Park University campus in downtown Pittsburgh, Pennsylvania, surrounded by a thriving cultural and performing arts scene. Pittsburgh is a safe, beautiful, affordable, and friendly city in western Pennsylvania that is home to world-class universities and colleges, informative museums, historical attractions, and professional sports teams. The city is consistently ranked in the top “Most Livable Cities in North America” by *The Economist*.

Great Things to See and Do

Mt. Washington: This scenic overlook, which provides a breathtaking view of downtown and the Golden Triangle, is home to many of Pittsburgh’s loveliest restaurants and most charming shops.

Carnegie Science Center: Over 250 interactive exhibits occupy an impressive 3,700 square meters that include a planetarium, miniature railroad exhibit, Omnimax Theater, the *USS Requin* (World War II submarine) and a health science center.

Pittsburgh Pro Sports: If you are a sports fan, you are sure to enjoy Pittsburgh, home to the Steelers (football), Penguins (hockey) and Pirates (baseball).



DOWNTOWN

ELS ON CAMPUS

Four-Week Courses	English for Academic Purposes, Semi-Intensive English, American Explorer
Options Available	Class Visitation, Course Auditing, Concurrent Enrollment, Conversation Partnerships
Housing Options	Student Residence (on-campus), Homestay
Minimum Age	15
Host Institution	Private; Enrollment 3,841 Waive TOEFL® for ELS graduates*
Ranking	<i>U.S. News & World Report: #122 of “Best Regional Universities of the North” – 2015</i>
Sample Majors Included	Undergraduate: Advertising; Biological Sciences; Civil Engineering Technology; Electrical Engineering Technology; Journalism Graduate: Business Administration; Engineering Management; Organizational Leadership
Address	201 Wood Street, Room 804 LH Pittsburgh, Pennsylvania 15222 U.S.A.

*Accepted ELS Level and applicable degree program(s) vary by institution.





For more information on this Center, visit: ELS.EDU/BRISTOL | UNIVERSITYSEARCH.COM/RWU

Roger Williams University

Bristol, Rhode Island

ELS/Bristol is located on Roger Williams University's waterfront campus in the seaport town of Bristol, Rhode Island. The town of Bristol is a historic New England town located on the Mount Hope Bay, with a proud sailing tradition and a strong role in American history. Bristol is located 30 minutes from Providence and Newport, two beautiful cities that offer many cultural and educational experiences, and only 20 minutes from the nearest beach.

Great Things to See and Do

The Great Outdoors: Bristol is just 45 minutes from the Atlantic Ocean, and its harbor is home to one of Rhode Island's most active boating communities.

Day Trips/Weekends Away: There is no need to travel far in order to experience busy city life in Boston, the seaside history of Newport, or the beaches of Cape Cod.

The Flying Horse Carousel: The nation's oldest carousel is located in the resort town of Watch Hill, just over an hour's trip from Bristol.



ELS ON CAMPUS

Four-Week Courses	English for Academic Purposes, Semi-Intensive English, American Explorer
Options Available	Class Visitation, Course Auditing, Concurrent Enrollment, Conversation Partnerships
Housing Options	Student Residence (off-campus), Homestay
Minimum Age	14
Host Institution	Private; Enrollment 4,655 Waive TOEFL® for ELS graduates*
Ranking	<i>U.S. News & World Report: #36 of "Top Regional Universities of the North" – 2016</i>
Sample Majors Included	Undergraduate: Architecture; Business Administration and Management; Engineering; Cybersecurity; Graphic Design
Address	1 Old Ferry Road Bristol, Rhode Island 02809 U.S.A.

*Accepted ELS Level and applicable degree program(s) vary by institution.





For more information on this Center, visit: ELS.EDU/PHILADELPHIA-CAMDEN | UNIVERSITYSEARCH.COM/RUTGERSCAMDEN

Rutgers University–Camden

Camden, New Jersey

ELS/Philadelphia – Camden and its host campus of Rutgers University–Camden are located in the heart of the beautiful Camden Waterfront neighborhood of Camden, New Jersey. The campus is secure and comfortable, with accessible public transportation and a strong feeling of community, and is less than three kilometers from the heart of historic Philadelphia. With just a 10-minute subway ride, you can easily enjoy Philadelphia’s music, theater, museums, sports, shopping and restaurants.

Great Things to See and Do

Camden Waterfront: The neighborhood draws more than 3 million visitors every year. Visitors can experience the Adventure Aquarium, enjoy a concert or take in a minor league baseball game, all within easy traveling distance of the Rutgers University–Camden campus.

Day Trips/Weekends Away: The campus is two hours from New York City, two and a half hours from Washington, D.C., and less than one hour from Atlantic City, giving plenty of options for fun weekends away.

Philadelphia: From shopping at Reading Terminal Market and enjoying the animal habitats at the Philadelphia Zoo to visiting museums like the Philadelphia Art Museum and The Franklin Institute, there are limitless entertaining activities in Philadelphia that are within easy reach.



ELS ON CAMPUS

Four-Week Courses	English for Academic Purposes, Semi-Intensive English, American Explorer
Options Available	Class Visitation, Course Auditing, Concurrent Enrollment, Conversation Partnerships
Housing Options	Student Residence (on-campus), Homestay
Minimum Age	18
Host Institution	Public; Enrollment 6,535 Waive TOEFL® for ELS graduates*
Ranking	<i>U.S. News & World Report: among the "Top Public Regional Schools in the North" – 2016</i>
Sample Majors Included	Undergraduate: Biological Sciences; Business; Computer Science; Engineering (Pre); Mathematics Graduate: Biology; Business Administration; Chemistry
Address	215 North 3rd Street Camden, New Jersey 08102 U.S.A.

*Accepted ELS Level and applicable degree program(s) vary by institution.





For more information on this Center, visit: ELS.EDU/PHILADELPHIA | UNIVERSITYSEARCH.COM/SJU

Saint Joseph's University

Philadelphia, Pennsylvania

ELS/Philadelphia is located close to downtown Philadelphia on the stunning campus of Saint Joseph's University. The private, suburban campus is supportive and close-knit, while easily accessible to the networking and career opportunities of a major city. Philadelphia is the fifth-largest city in the country, and attracts nearly 40 million visitors per year. Using the city's extensive public transportation system, you can enjoy Philadelphia's culture, iconic sights, professional sports, dining, shopping, and entertainment.

Great Things to See and Do

Old City: Visit Independence Hall, the Liberty Bell, the Betsy Ross House, Ben Franklin's workspace, the President's House and other places of historic significance.

Philadelphia Museum of Art: This museum offers a broad collection from late 19th- and early 20th-century artists such as van Gogh, Monet, Pissarro, Picasso and Rodin.

The Franklin Institute Science Museum: This unique museum houses the world's largest artificial heart and the biggest pinball machine.



SUBURBAN

ELS ON CAMPUS

Four-Week Courses	English for Academic Purposes, General English, Semi-Intensive English, American Explorer
Options Available	Conversation Partnerships
Housing Options	Student Residence (on-campus), Homestay
Minimum Age	17
Host Institution	Private; Enrollment 9,020 Waive TOEFL® for ELS graduates*
Ranking	<i>Princeton Review: among "Best Colleges in the Northeast" – 2016</i>
Sample Majors Included	Undergraduate: Biology; Business Administration; Computer Science; Finance; Food Marketing Graduate: Business Intelligence; Computer Science; Financial Services
Address	5414 Overbrook Avenue Philadelphia, Pennsylvania 19131 U.S.A.

*Accepted ELS Level and applicable degree program(s) vary by institution.





For more information on this Center, visit: ELS.EDU/SANDIEGO

San Diego – City Center

San Diego, California

ELS/San Diego is centrally located in downtown San Diego, California. The city’s entertainment and shopping district is nearby, and major bus and trolley lines are all within easy walking distance. The comfortable and mild climate, friendly and relaxed atmosphere, 100 kilometers of sandy beaches, year-round events, and many tourist attractions like the world-famous San Diego Zoo make this lively coastal Southern California city a fun and unique place to explore.

Great Things to See and Do

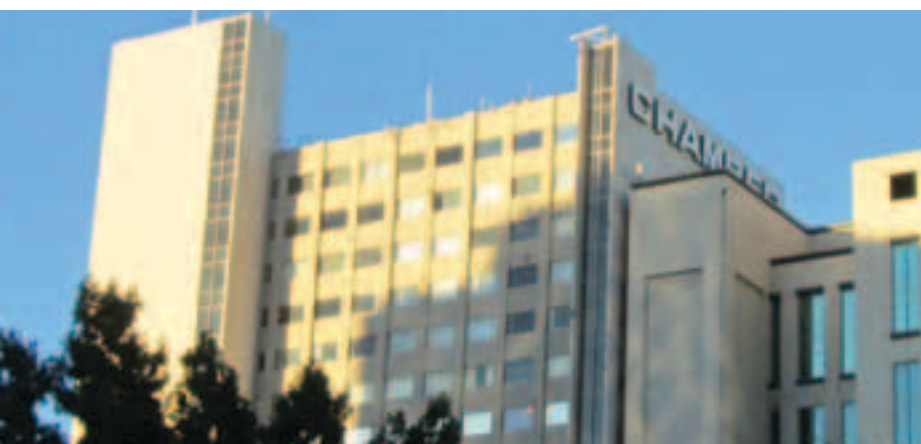
Mission Beach: One of the most popular beaches in the city, this 3.2-kilometer stretch of white sand sits near a boardwalk and is perfect for sunbathers, inline skaters, and bicyclists.

The Gaslamp Quarter: These 16 blocks in the downtown area are peppered with Victorian-style buildings that house a variety of shops, theaters, art galleries, eclectic restaurants and nightlife.

San Diego Zoo and Safari Park: One of the most famous zoos in the country, the San Diego Zoo is known for its expansive natural habitats.



Four-Week Courses	English for Academic Purposes, General English, Semi-Intensive English, American Explorer
Housing Options	Homestay
Minimum Age	14
Address	110 West C Street, Suite 1600 San Diego, California 92101 U.S.A.





For more information on this Center, visit: ELS.EDU/SANFRANCISCO

San Francisco – City Center

San Francisco, California

ELS/San Francisco – Downtown is located in the heart of San Francisco, a coastal Northern California city and financial and banking hub located between the Pacific Ocean and the San Francisco Bay. The city is famous for its cool summers, year-round fog, steep terrain, innovative architecture, and iconic landmarks. Popular attractions include the Golden Gate Bridge, cable cars, the former prison on Alcatraz Island, and the city’s lively Chinatown district.

Great Things to See and Do

Cable Cars: San Francisco’s cable car system is the last of its kind in the United States and is the only moving National Historic Monument in the world.

Golden Gate Bridge: The bridge’s vaulting, orange arches amid the rocky seascape of San Francisco Bay have made it the West Coast’s most enduring symbol and the city’s most popular tourist attraction.

Fisherman’s Wharf: This waterfront neighborhood houses several popular San Francisco sights, including the Pier 39 shopping center (a great spot to view sunbathing seals) and the Ripley’s Believe It or Not!® Museum.



DOWNTOWN

Four-Week Courses	English for Academic Purposes, General English, Semi-Intensive English, American Explorer
Housing Options	Student Residence (off-campus), Homestay
Minimum Age	16
Address	300 Montgomery Street, Suite 200 San Francisco, California 94104 U.S.A.





For more information on this Center, visit: ELS.EDU/SANTABARBARA

Santa Barbara – City Center

Santa Barbara, California

ELS/Santa Barbara is located in Santa Barbara, a friendly town on the Southern California coast. Santa Barbara, one of the safest cities in the United States, is famous for its sunny weather, Spanish-style architecture and lively college-town spirit. The city is pedestrian-friendly and offers excellent public transportation. Its amazing mix of mountains, beaches, and bustling downtown gives you access to big-city culture, museums, annual events, and limitless outdoor adventures.

Great Things to See and Do

State Street: Santa Barbara’s most famous avenue, State Street offers shops, art galleries, theaters and museums.

Beach Life: The coastal area offers some of the best surfing, boogie boarding, kayaking, and paragliding, as well as opportunities to whale watch in the Pacific Ocean.

Day Trips/Weekend Getaways: Los Angeles is under a two-hour drive away, and major cities like Las Vegas and San Francisco are accessible for weekend adventures.



Four-Week Courses	English for Academic Purposes, Semi-Intensive English, American Explorer
Options Available	Conversation Partnerships
Housing Options	Student Residence (off-campus), Homestay
Minimum Age	14
Address	104 West Anapamu, Suite I Santa Barbara, California 93101 U.S.A.





For more information on this Center, visit: ELS.EDU/SANTAMONICA

Santa Monica – City Center

Santa Monica, California

ELS/Santa Monica is located in downtown Santa Monica, next to the colorful and lively Santa Monica Promenade’s sidewalk singers, artists, theaters, shops, and open-air restaurants. The city is famous for its palm tree-lined walkways, breathtaking sunsets, mild year-round climate and friendly atmosphere. The nearby Santa Monica Pier is one of the top tourist destinations in Southern California. Santa Monica also has many outdoor activities, including surfing, skateboarding, biking and swimming.

Great Things to See and Do

Santa Monica Pier: This wooden wharf is home to eateries, shops, an indoor merry-go-round, an arcade, a roller coaster and a giant Ferris wheel that offers fantastic views of the bay and the mountains.

Santa Monica Bike Path: This 42-kilometer path reaches from Santa Monica into Venice Beach and Marina del Rey.

Third Street Promenade: These three pedestrian-only city blocks of retail stores, entertainment, dining, and commercial and residential space are located just blocks from the beach.



URBAN

Four-Week Courses	English for Academic Purposes, Semi-Intensive English, American Explorer
Housing Options	Student Residence (off-campus), Homestay
Minimum Age	14
Address	1315 Third Street Santa Monica, California 90401 U.S.A.





For more information on this Center, visit: ELS.EDU/SEATTLE

Seattle City – Center

Seattle, Washington

ELS/Seattle is located in the trendy Capitol Hill neighborhood adjacent to busy downtown Seattle, Washington. The Center is within walking distance of Seattle’s Pike Place Market, sports stadiums, and downtown shopping. Ride a ferry to one of the many Washington islands, travel to the top of the Seattle Space Needle, explore the outdoors, or enjoy lunch in the International District. Portland, Oregon, and Vancouver, B.C., Canada, are also just a few hours away.

Great Things to See and Do

Olympic Sculpture Park: This four-hectare outdoor section of the Seattle Art Museum includes works by Alexander Calder, Claes Oldenburg and Roxy Paine, among others.

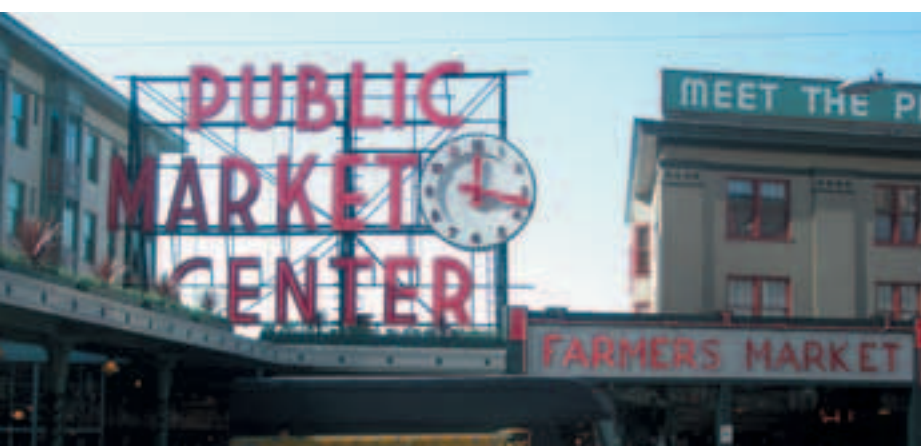
Space Needle: Built for the 1962 World’s Fair, the Space Needle dominates Seattle’s skyline with its iconic, UFO-like design. The tower’s round observation deck (nearly 160 meters high) offers spectacular views of the city and the nearby Olympic Mountains.

Pioneer Square: This cobblestoned neighborhood includes art galleries, restaurants and shops, a stop for the cable car, and a Tlingit totem pole.



DOWNTOWN

Four-Week Courses	English for Academic Purposes, General English, Semi-Intensive English, American Explorer
Housing Options	Student Residence (off-campus), Homestay
Minimum Age	15
Address	400 East Pine Street, Suite 100 Seattle, Washington 98122 U.S.A.





For more information on this Center, visit: ELS.EDU/ROCHESTER | UNIVERSITYSEARCH.COM/BROCKPORT

State University of New York – Brockport

Rochester, New York

ELS/Rochester is located on the campus of State University of New York – Brockport in the village of Brockport, 25 kilometers outside Rochester, New York. Brockport is a college town of 8,300 residents on the historic Erie Canal. Around Rochester, you can visit galleries, walk through one of the city's parks, enjoy live theater, explore the natural beauty of the Finger Lakes region, or shop in local boutiques or upscale malls throughout the region.

Great Things to See and Do

Rochester Museum and Science Center: Explore the museum's interactive exhibits on science, technology and the region's heritage.

New York's Finger Lakes Region: Just a short drive from Rochester are the Finger Lakes' pristine waterfalls, gorgeous parks, appealing villages, unique museums and great shopping.

Niagara Falls: After only an hour and a half's drive from Brockport, you can grab a poncho, climb aboard the *Maid of the Mist* and get close enough to the falls to be drenched by spray.



ELS ON CAMPUS

Four-Week Courses	English for Academic Purposes, Semi-Intensive English, American Explorer
Options Available	Class Visitation, Course Auditing, Concurrent Enrollment, Conversation Partnerships
Housing Options	Student Residence (on-campus), Homestay
Minimum Age	18
Host Institution	Public; Enrollment 8,260 Waive TOEFL® for ELS graduates*
Ranking	<i>U.S. News & World Report: #58 of "Top Regional Universities of the North" – 2016</i>
Sample Majors Included	Undergraduate: Biology; Business; Communications; Computer Science Graduate: Communications; Dance; Public Administration
Address	350 New Campus Drive, Dailey Hall #216 Brockport, New York 14420 U.S.A.

*Accepted ELS Level and applicable degree program(s) vary by institution.





For more information on this Center, visit: ELS.EDU/ORLANDO | UNIVERSITYSEARCH.COM/STETSON

Stetson University

Orlando, Florida

ELS/Orlando is located in the modern Stetson University Center Building, an extension campus of Stetson University in the charming town of Celebration, Florida. Celebration offers parks and lakes, a golf course, and walking and cycling trails where you can experience Floridian landscapes and wildlife. Both the Gulf of Mexico and Atlantic Ocean beaches are about an hour's drive away, and the excitement of downtown Orlando is only 30 minutes from Celebration.

Great Things to See and Do

Theme Parks: You will want to visit all three big theme parks in the area – Walt Disney World Resort®, SeaWorld Orlando® and Universal Orlando Resort®.

Kennedy Space Center: Just over an hour's drive from the Orlando theme park area, the KSC Visitor Complex is a fabulous mix of history and science.

Forever Florida: This 1,900-hectare wildlife conservation area has nine diverse subtropical ecosystems that are home to hundreds of animal species and the first zip-line roller coaster in the United States.



Four-Week Courses	English for Academic Purposes, General English, Semi-Intensive English, American Explorer
Housing Options	Student Residence (off-campus), Homestay
Minimum Age	14
Host Institution	Private; Enrollment 4,333 Waive TOEFL® for ELS graduates*
Ranking	<i>Princeton Review: among "Top 380 Colleges in America" – 2016</i>
Sample Majors Included	Undergraduate: Computer Science; International Business; Music Theory and Composition; Physics Graduate: MBA, EMBA, Law
Address	800 Celebration Avenue, Suite 329 Celebration, Florida 34747 U.S.A.

*Accepted ELS Level and applicable degree program(s) vary by institution.





For more information on this Center, visit: ELS.EDU/ATLANTICCITY | UNIVERSITYSEARCH.COM/STOCKTON

Stockton University

Atlantic City, New Jersey

ELS/Atlantic City is located on the peaceful campus of Stockton University in the coastal town of Galloway, New Jersey. This modern campus is located on a pristine national reserve, and includes multiple sports fields, outdoor cooking areas, and a lakeside beach. The campus is less than 20 kilometers from beautiful Atlantic shore beaches and within easy traveling distance of Philadelphia, New York, and Washington, D.C. Public transportation runs straight from campus to restaurants and shopping.

Great Things to See and Do

Atlantic City Boardwalk and Beaches: Stroll, shop and sightsee along the world-famous wooden walkway. Atlantic City is a destination resort area, attracting tourists with its beautiful beaches, shopping outlets, restaurants, casinos and entertainment.

Day Trips/Weekends Away: Philadelphia is just an hour's drive away; New York City, two hours; Washington, D.C., three.

Six Flags® Great Adventure: Just over one hour away, Six Flags® is New Jersey's biggest and most popular theme park, featuring dozens of rides, food, shows and activities.



ELS ON CAMPUS

Four-Week Courses	English for Academic Purposes, Semi-Intensive English, American Explorer
Options Available	Class Visitation, Concurrent Enrollment, Conversation Partnerships
Housing Options	Student Residence (on-campus), Homestay
Minimum Age	14
Host Institution	Public; Enrollment 8,674 Waive TOEFL® for ELS graduates*
Ranking	<i>U.S. News & World Report: #12 of "Top Regional Public Universities of the North" – 2016</i>
Sample Majors Included	Undergraduate: Computer Science and Information Sciences; Criminal Justice; Environmental Studies; Hospitality and Tourism Management; Visual/Performing Arts Graduate: Business Administration
Address	101 Vera King Farris Drive Galloway, New Jersey 08205 U.S.A.

*Accepted ELS Level and applicable degree program(s) vary by institution.





For more information on this Center, visit: ELS.EDU/LUBBOCK | UNIVERSITYSEARCH.COM/TTU

Texas Tech University

Lubbock, Texas

ELS/Lubbock is a short bus ride away from Texas Tech University (TTU), a Carnegie Tier One Research University located in Lubbock, Texas. Lubbock, a city in northwestern Texas, is home to almost 250,000 people. The city has an affordable cost of living and abundant sunshine for much of the year. Visit a museum, attend a concert, dine at one of the city's restaurants, or shop in a nearby mall or local boutique.

Great Things to See and Do

The National Ranching Heritage Center: This unique museum has a variety of artifacts and structures that reveal much about ranching culture and the West.

Museum of Texas Tech University: The museum is a multifaceted institution that includes the Center for Advanced Study of Museum Science and Heritage Management.

The Depot District: Dedicated to music and nightlife, this district, located in the old railroad depot area, offers theaters, restaurants and the arts.



URBAN

Four-Week Courses	English for Academic Purposes, Semi-Intensive English, American Explorer
Options Available	Class Visitation
Housing Options	Student Residence (on-campus), Homestay
Minimum Age	14
Host Institution	Public; Enrollment 35,859 Waive TOEFL® for ELS graduates*
Ranking	<i>U.S. News & World Report: #91 of "Top Public Schools of National Universities" – 2016</i>
Sample Majors Included	Undergraduate: Architecture; Business Administration; Food Science; Mechanical Engineering; Personal Financial Planning Graduate: Hospitality and Retailing Management; Management Information Systems; Personal Financial Planning
Address	1921 Broadway Street Lubbock, Texas 79401 U.S.A.

*Accepted ELS Level and applicable degree program(s) vary by institution.





For more information on this Center, visit: ELS.EDU/CINCINNATI | UNIVERSITYSEARCH.COM/UC

University of Cincinnati

Cincinnati, Ohio

ELS/Cincinnati is located in the heart of the modern campus of the University of Cincinnati (UC), within walking distance of classrooms, housing, restaurants, shopping, activities and public transportation. Cincinnati, Ohio, is a vibrant and culturally diverse city in the Midwestern United States. Cincinnati is also located in a perfect spot to easily and quickly travel by car, bus or plane to other tourist destination cities, including Boston, New York, and Washington, D.C.

Great Things to See and Do

Cincinnati Zoo and Botanical Gardens: The second-oldest zoo in the U.S.A. is famous for its endangered species and birthing programs for gorillas and white tigers.

Cincinnati Art Museum: One of the most prestigious art museums nationwide, with over 100,000 works of art, this lavish building is known for its 19th-century European and American paintings.

Cincinnati Parks: There are about 2,025 hectares of parks within the city and 4,900 hectares of county parks just outside the city limits, allowing easy access to beautiful spaces for relaxing and recreation.



ELS ON CAMPUS

Four-Week Courses	English for Academic Purposes, Semi-Intensive English, American Explorer
Options Available	Class Visitation, Course Auditing, Concurrent Enrollment, Conversation Partnerships
Housing Options	Student Residence (on-campus), Homestay
Minimum Age	18
Host Institution	Public; Enrollment 44,251 Waive TOEFL® for ELS graduates*
Ranking	<i>U.S. News & World Report: among the "Top Public Schools of National Universities" – 2016</i>
Sample Majors Included	Undergraduate: Business Economics; Engineering (FEP); Neuroscience; Urban Planning Graduate: Business Administration; Political Science; Political Science (Doctorate)
Address	60 West Charlton Street, Suite 150 Cincinnati, Ohio 45221 U.S.A.

*Accepted ELS Level and applicable degree program(s) vary by institution.





For more information on this Center, visit: ELS.EDU/HOUSTONCLEARLAKE | UNIVERSITYSEARCH.COM/UHCL

University of Houston – Clear Lake

Houston, Texas

ELS/Houston – Clear Lake is located next to the University of Houston – Clear Lake, a beautifully green campus in the Clear Lake area of Houston, Texas. Visit the NASA Space Center, dine at diverse restaurants, or go shopping in and around Clear Lake. All of the excitement of downtown Houston is just a bus ride away, and Galveston and the Gulf Coast beaches are just 30 minutes away, offering even more exciting attractions and activities.

Great Things to See and Do

NASA: Johnson Space Center: Here, the unique exhibits, special presentations and hands-on activities tell the story of NASA’s manned space flight program.

The Kemah Boardwalk: Located just 15 kilometers from downtown Houston, the Kemah Boardwalk is home to great waterfront restaurants, amusements, many retail stores and annual festivals.

Moody Gardens: Visit the Aquarium Pyramid, one of the largest aquariums in the world; the Rainforest Pyramid, exhibiting tropical animals and plants; and the Discovery Pyramid, with science-focused exhibits.



Four-Week Courses	English for Academic Purposes, Semi-Intensive English, American Explorer
Options Available	Concurrent Enrollment, Conversation Partnerships
Housing Options	Student Residence (on-campus), Homestay
Minimum Age	15
Host Institution	Public; Enrollment 8,665 Waive TOEFL® for ELS graduates*
Ranking	<i>U.S. News & World Report: #32 of "Top Public Regional Schools in the West" – 2016</i>
Sample Majors Included	Undergraduate: Accounting; Computer Science; General Business; Psychology Graduate: Business Administration; Digital Media Studies; Early Childhood Education
Address	1641 Space Center Boulevard, Building A Houston, Texas 77058 U.S.A.

*Accepted ELS Level and applicable degree program(s) vary by institution.





For more information on this Center, visit: ELS.EDU/LAVERNE | UNIVERSITYSEARCH.COM/LAVERNE

University of La Verne

La Verne, California

ELS/La Verne is located on the campus of the University of La Verne in beautiful La Verne, California, a safe and small city about 45 minutes east of Los Angeles. It is located near beautiful and popular beaches, distinguished museums, and attractions such as Disneyland and Universal Studios Hollywood®. La Verne is a residential community full of small businesses, shops, restaurants, and accessible public transportation that provides a friendly, small-town atmosphere.

Great Things to See and Do

J. Paul Getty Center: The Getty Center contains some of the finest works of art in the world, all on a sprawling campus in the Santa Monica Mountains.

Huntington Beach: Just one hour from La Verne, Huntington averages 340 days of sunshine a year and is home to 16 kilometers of beaches, fun shops, and trendsetting restaurants.

Universal Studios Hollywood®: One of the most popular attractions in the Los Angeles area, it features rides and amusements based on some of the most popular scenes and characters from film and television.



URBAN

ELS ON CAMPUS

Four-Week Courses	English for Academic Purposes, Semi-Intensive English, American Explorer
Options Available	Class Visitation, Concurrent Enrollment, Conversation Partnerships
Housing Options	Student Residence (on-campus), Homestay
Minimum Age	14
Host Institution	Private; Enrollment 8,328 Waive TOEFL® for ELS graduates*
Ranking	<i>U.S. News & World Report: #160 of "Top National Universities" – 2016</i>
Sample Majors Included	Undergraduate: Biology; Business Administration; Communications; Kinesiology; Psychology Graduate: Business Administration; Health Care Administration; Leadership Management
Address	1886 Third Street La Verne, California 91750 U.S.A.

*Accepted ELS Level and applicable degree program(s) vary by institution.





For more information on this Center, visit: ELS.EDU/STLOUIS | UNIVERSITYSEARCH.COM/UMSL

University of Missouri – St. Louis

St. Louis, Missouri

ELS/St. Louis is located on the campus of the University of Missouri – St. Louis, a public research university. St. Louis is located along the Mississippi River and is home to 2.5 million people. The city has a low cost of living for all of the entertainment, culture, and attractions it offers. Attend a festival in Forest Park, listen to live jazz and blues music, or cheer at a professional sporting event.

Great Things to See and Do

Gateway Arch: This stainless steel engineering marvel and monument to westward expansion rises 192 meters into the air.

Forest Park: The enormous park offers everything, including a zoo, summer concerts, seasonal festivals, museums, and a golf course.

Professional Sports: St. Louis is home to the professional sports franchises St. Louis Blues (hockey) and St. Louis Cardinals (baseball).



ELS ON CAMPUS

Four-Week Courses	English for Academic Purposes, Semi-Intensive English, American Explorer
Options Available	Class Visitation, Course Auditing, Concurrent Enrollment, Conversation Partnerships
Housing Options	Student Residence (off-campus), Homestay
Minimum Age	16
Host Institution	Public; Enrollment 17,000 Waive TOEFL® for ELS graduates*
Ranking	<i>Princeton Review: among the "Best 295 Business Schools in the US" – 2016</i>
Sample Majors Included	Undergraduate: Biotechnology; Computer Science; International Business; Management Information Systems; Mechanical Engineering Graduate: Biology; Business Administration; Education
Address	One University Boulevard, Sassin Building St. Louis, Missouri 63121 U.S.A.

*Accepted ELS Level and applicable degree program(s) vary by institution.





For more information on this Center, visit: ELS.EDU/NEWHAVEN | UNIVERSITYSEARCH.COM/NEWHAVEN

University of New Haven

New Haven, Connecticut

ELS/New Haven is located on the campus of the University of New Haven in West Haven, Connecticut. The beautiful West Haven beaches and boardwalk are only 10 minutes from the Center. Nearby New Haven, just 15 minutes away, is home to the world-renowned Yale University. Historic New Haven features excellent restaurants, shopping, museums, theaters, and nightlife. The energy and excitement of New York City and Boston are also within easy reach.

Great Things to See and Do

East Rock Park: Visit the largest park in New Haven to enjoy hiking trails, a rose garden, picnic areas, nature trails, tennis courts, a bird sanctuary and a panoramic view of the Long Island Sound.

Yale University: Regarded as one of the world's greatest universities, Yale offers a wide variety of stimulating activities for visitors, from tours of historic buildings to art shows and live theater.

Pizza Feud: Pepe's and Sally's are two long-standing New Haven pizzerias that have been feuding for decades. Located on the same block, both have lines out the door day and night.



URBAN

ELS ON CAMPUS

Four-Week Courses	English for Academic Purposes, Semi-Intensive English, American Explorer
Options Available	Class Visitation, Course Auditing, Conversation Partnerships
Housing Options	Student Residence (off-campus), Homestay
Minimum Age	16
Host Institution	Private; Enrollment 6,500 Waive TOEFL® for ELS graduates*
Ranking	<i>Princeton Review: among the "Best in Northeast USA" – 2015</i>
Sample Majors Included	Undergraduate: Accounting; Computer Science; Engineering; Finance; Management Graduate: Electrical Engineering; Computer Science; Public Administration
Address	1211 Campbell Avenue, Charger Plaza West Haven, Connecticut 06516 U.S.A.

*Accepted ELS Level and applicable degree program(s) vary by institution.





For more information on this Center, visit: ELS.EDU/GRANDFORKS | UNIVERSITYSEARCH.COM/UND

University of North Dakota

Grand Forks, North Dakota

ELS/Grand Forks is located on the wooded campus of the University of North Dakota in Grand Forks, North Dakota, the third-largest city in the state. Although North Dakota is known for its winters, you can enjoy the area's natural beauty in the summer through activities like biking and camping. In Grand Forks, you can dine in American and international restaurants, enjoy live entertainment, attend seasonal events, and cheer for the University of North Dakota's competitive sports teams.

Great Things to See and Do

Outdoor Fun: Along the banks of the Red River, Grand Forks boasts outdoor activities such as hiking, camping and birding. Winter activities include cross-country skiing and sledding.

Arts and Culture: Visit a gallery, catch a live play or musical performance, or learn something new in a local museum.

Greater Grand Forks Greenway: This massive park, more than twice the size of New York's Central Park, runs along the Red River and includes an extensive path system over 69 kilometers long.



ELS ON CAMPUS

Four-Week Courses	English for Academic Purposes, Semi-Intensive English, American Explorer
Options Available	Class Visitation, Course Auditing, Concurrent Enrollment, Conversation Partnerships
Housing Options	Student Residence (on-campus), Homestay
Minimum Age	15
Host Institution	Public; Enrollment 14,951 Waive TOEFL® for ELS graduates*
Ranking	<i>U.S. News & World Report: #100 of "Top Public Schools of National Universities" – 2016</i>
Sample Majors Included	Undergraduate: Aviation Management; Civil Engineering; Computer Science; Electrical Engineering; Electrical Engineering – Biomedical Engineering Focus
Address	221 Centennial Drive, O'Kelly Hall, Room 2, Stop 8390 Grand Forks, North Dakota 58202 U.S.A.

*Accepted ELS Level and applicable degree program(s) vary by institution.





For more information on this Center, visit: ELS.EDU/HOUSTON | UNIVERSITYSEARCH.COM/STTHOM

University of St. Thomas – Houston

Houston, Texas

ELS/Houston is located near the University of St. Thomas – Houston in Houston, Texas, with full access to the university’s campus and facilities. Houston is the fourth-largest city in the United States and is home to the most culturally diverse population of any major U.S. city. Houston is also an important energy industry hub. Enjoy weekend visits to NASA’s Johnson Space Center, the Gulf of Mexico beaches, and more.

Great Things to See and Do

NASA’s Johnson Space Center: Here, unique exhibits, special presentations and hands-on activities tell the story of NASA’s manned space flight program.

Moody Gardens: Visit the Aquarium Pyramid, one of the largest aquariums in the world; the Rainforest Pyramid, exhibiting tropical animals and plants; and the Discovery Pyramid, with science-focused exhibits.

Galveston Beaches: Galveston Island offers visitors over 50 kilometers of beautiful, scenic shoreline to enjoy.



URBAN

Four-Week Courses	English for Academic Purposes, General English, Semi-Intensive English, American Explorer
Options Available	Conversation Partnerships
Housing Options	Student Residence (off-campus), Homestay
Minimum Age	16
Host Institution	Private; Enrollment 3,411 Waive TOEFL® for ELS graduates*
Ranking	<i>U.S. News & World Report: #30 “Best Regional Universities of the West” – 2016</i>
Sample Majors Included	Undergraduate: Biology; Business; Finance; International Development; Marketing Graduate: Accounting; Business Administration; Education
Address	2990 Richmond Avenue, Suite 600 Houston, Texas 77098 U.S.A.

*Accepted ELS Level and applicable degree program(s) vary by institution.





For more information on this Center, visit: ELS.EDU/STPAUL | UNIVERSITYSEARCH.COM/STTHOMAS

University of St. Thomas – Minnesota

St. Paul, Minnesota

ELS/St. Paul is situated on the picturesque University of St. Thomas – Minnesota campus, located on the Mississippi River waterfront between the historic city of St. Paul and the modern city of Minneapolis. The campus spans both cities, connected by a convenient, private shuttle for students. The two cities share a reputation for safety, cleanliness, and low-cost living in a Midwestern environment. Residents of this charming city are friendly and welcoming, and enjoy outdoor activities year-round.

Great Things to See and Do

Arts and Culture: Minneapolis and St. Paul are home to a thriving arts community. Visit a gallery, enjoy an art museum, or listen to live poetry or musical performances.

Minnesota History Center: You can attend a lecture or concert, participate in one of the special events throughout the year, or explore permanent exhibits at this interactive museum.

Rivers and Lakes: Minneapolis and St. Paul are divided by the Mississippi River, and together host an extensive chain of lakes, waterfalls, and parks with biking and walking trails, gardens, and beaches.



ELS ON CAMPUS

Four-Week Courses	English for Academic Purposes, General English, Semi-Intensive English, American Explorer
Options Available	Class Visitation, Course Auditing, Concurrent Enrollment, Conversation Partnerships
Housing Options	Student Residence (on-campus), Homestay
Minimum Age	16
Host Institution	Private; Enrollment 10,229 Waive TOEFL® for ELS graduates*
Ranking	<i>U.S. News & World Report: #113 of "National Universities" – 2015</i>
Sample Majors Included	Undergraduate: Biology; Business Administration; Communications; Computer/Information Sciences; Electrical/Electronics Engineering Graduate: Educational Leadership and Administration; Engineering; Software Systems
Address	2115 Summit Avenue, Mail #5032 St. Paul, Minnesota 55105 U.S.A.

*Accepted ELS Level and applicable degree program(s) vary by institution.





For more information on this Center, visit: ELS.EDU/TAMPA | UNIVERSITYSEARCH.COM/UT

The University of Tampa

Tampa, Florida

ELS/Tampa is located at The University of Tampa, a private university in downtown Tampa, Florida. The campus is within walking distance of hotels, restaurants, and the Riverwalk, the city's restored downtown waterfront area, which is full of restaurants, events, and activities. The city is a combination of relaxation and excitement. Tampa enjoys beautiful, warm weather all year long, and Gulf Coast beaches, shopping, dining, nightlife, and theme parks are within easy reach.

Great Things to See and Do

Florida Aquarium: The aquarium is home to more than 20,000 animals and plants, including stingrays, moray eels, sea turtles, sharks, African penguins, and polar bears.

Busch Gardens: Spend the day at this thrill-ride park, zoo and botanical garden all in one!

Beaches: Situated on Florida's Gulf Coast, Tampa Bay encompasses some of the best beaches in the state, most of which are within an hour's drive of Tampa.



URBAN

ELS ON CAMPUS

Four-Week Courses	English for Academic Purposes
Options Available	Class Visitation, Course Auditing, Concurrent Enrollment, Conversation Partnerships
Housing Options	Student Residence (off-campus), Homestay
Minimum Age	17
Host Institution	Private; Enrollment 8,000 Waive TOEFL® for ELS graduates*
Ranking	<i>U.S. News & World Report: #22 of "Regional Universities South" – 2016</i>
Sample Majors Included	Undergraduate: Advertising and Public Relations; Communications; Management; Marketing; Nursing Graduate: Business; Finance; Marketing
Address	701 W. Kennedy Boulevard Tampa, Florida 33606 U.S.A.

*Accepted ELS Level and applicable degree program(s) vary by institution.





For more information on this Center, visit: ELS.EDU/DALLAS | UNIVERSITYSEARCH.COM/UTDALLAS

The University of Texas at Dallas

Dallas, Texas

ELS/Dallas is located on the diverse and growing campus of The University of Texas at Dallas in quiet and safe Richardson, Texas, just minutes outside of the Dallas city center. The vibrant and dynamic city is home to one of the largest arts districts in the country. Dallas offers world-class shopping, exciting outdoor activities, year-round professional sporting events, eclectic cuisine from all over the world, and many exciting entertainment options.

Great Things to See and Do

Dallas Arts District: Here you'll find many of the city's main cultural attractions, including the Dallas Museum of Art, Nasher Sculpture Center and Meyerson Symphony Center, as well as many great restaurants.

West End Historic District: Visit the Old Red Museum, take a horse-and-carriage ride, shop for the perfect cowboy boots and hat, or take a walk through the historic streets of the district.

Six Flags Over Texas: In nearby Arlington, you will find some of the fastest, tallest, wildest amusement park rides in the country.



ELS ON CAMPUS

Four-Week Courses	English for Academic Purposes, Semi-Intensive English, American Explorer
Options Available	Conversation Partnerships
Housing Options	Student Residence (on-campus), Student Residence (off-campus), Homestay
Minimum Age	14
Host Institution	Public; Enrollment 24,554 Waive TOEFL® for ELS graduates*
Ranking	<i>Kiplinger's: on the list of "Top 100 Best Value Public Colleges," UT Dallas was ranked #33 in Texas and #38 in the U.S. – 2016</i>
Sample Majors Included	Undergraduate: Business Administration; Computer Engineering; Computer Science; Mechanical Engineering; Software Engineering Graduate: Arts and Technology; Business Administration Professional Flex Program; Finance
Address	720 W. Lookout Drive Richardson, Texas 75080 U.S.A.

*Accepted ELS Level and applicable degree program(s) vary by institution.





For more information on this Center, visit: ELS.EDU/SANANTONIO | UNIVERSITYSEARCH.COM/UIW

University of the Incarnate Word

San Antonio, Texas

ELS/San Antonio is located on the campus of the University of the Incarnate Word in San Antonio, Texas. San Antonio, among the top 10 most populous cities in the U.S.A., is a thriving cultural center in south-central Texas with a laid-back atmosphere, a rich history, abundant natural beauty, and friendly people. Marvel at the architecture, visit a museum, savor the eclectic dining options, or join in on one of the many seasonal events.

Great Things to See and Do

River Walk: Take a stroll along the River Walk through the center of the city and visit major attractions, including dozens of restaurants, boutiques, hotels and sidewalk cafés.

The Alamo: This fort pays tribute to Texas' historic struggle for independence.

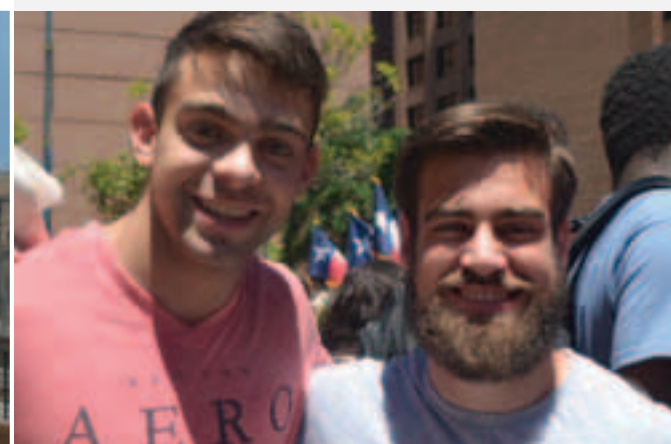
Amusement Parks: San Antonio is home to Six Flags Fiesta Texas, as well as SeaWorld's Aquatica™ and Splashtown™.



ELS ON CAMPUS

Four-Week Courses	English for Academic Purposes, Semi-Intensive English, American Explorer
Options Available	Class Visitation, Course Auditing, Concurrent Enrollment, Conversation Partnerships
Housing Options	Student Residence (on-campus), Homestay
Minimum Age	14
Host Institution	Private; Enrollment 9,940 Waive TOEFL® for ELS graduates*
Ranking	<i>U.S. News & World Report: #63 of "Best Regional Universities of the West" – 2014</i>
Sample Majors Included	Undergraduate: Business Administration; Computer Information Systems; Nutrition; Graphic Design; Psychology Graduate: Accounting; Administration; Business Administration
Address	4301 Broadway, CPO #498 San Antonio, Texas 78209 U.S.A.

*Accepted ELS Level and applicable degree program(s) vary by institution.





For more information on this Center, visit: ELS.EDU/KENOSHA | UNIVERSITYSEARCH.COM/UWPARKSIDE

University of Wisconsin – Parkside

Kenosha, Wisconsin

ELS/Kenosha is located on the picturesque campus of the University of Wisconsin – Parkside in Kenosha, Wisconsin. Kenosha is a vibrant and welcoming community nestled on the shores of Lake Michigan in southeastern Wisconsin, halfway between the major cities of Milwaukee and Chicago. While the shoreline is the area’s most popular attraction, you can also enjoy outlet mall shopping, golfing, hiking, biking, and, in the winter, skiing and snowboarding.

Great Things to See and Do

Lake Michigan Shoreline: The Lake Michigan shoreline is the most popular feature in the area, with five unique museums, an authentic electric streetcar system, two historic lighthouses, the popular Kenosha Harbor Market, and five beaches.

Day Trips/Weekends Away: Both Milwaukee, Wisconsin, and Chicago, Illinois, are an easy drive away, and Chicago is accessible from downtown Kenosha via an above-ground train system, making for the perfect weekend adventures.

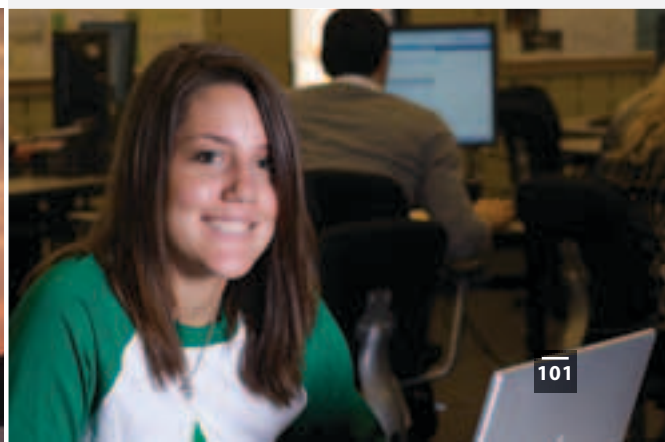
Jelly Belly® Visitor Center: Located just 20 minutes away from Kenosha is one of the two visitor centers for Jelly Belly®, a candy company best known for producing over 100 different flavors of jelly beans.



ELS ON CAMPUS

Four-Week Courses	English for Academic Purposes, Semi-Intensive English, American Explorer
Options Available	Class Visitation, Course Auditing, Concurrent Enrollment, Conversation Partnerships
Housing Options	Student Residence (on-campus), Homestay
Minimum Age	16
Host Institution	Public; Enrollment 4,618 Waive TOEFL® for ELS graduates*
Ranking	<i>U.S. News & World Report: among the "Best Colleges – National Liberal Arts Colleges, Tier 2" – 2016</i>
Sample Majors Included	Undergraduate: Applied Health Sciences; Business Management; Computer Science; Mathematics; Physics Graduate: Applied Molecular Biology; Business Administration; Computer Information Systems
Address	900 Wood Road, c/o University of Wisconsin – Parkside Kenosha, Wisconsin 53144 U.S.A.

*Accepted ELS Level and applicable degree program(s) vary by institution.





For more information on this Center, visit: ELS.EDU/PHILADELPHIAWESTCHESTER | UNIVERSITYSEARCH.COM/WCUPA

West Chester University

West Chester, Pennsylvania

ELS/Philadelphia – West Chester is located on the campus of West Chester University in West Chester, Pennsylvania, just a short drive west of Philadelphia. West Chester is a quaint, picturesque college town. The local community is diverse and welcoming to international students. You can easily walk from campus to local shops, restaurants and music venues, or you can easily travel to experience all the excitement of Philadelphia, New York City, or Washington, D.C.

Great Things to See and Do

Museums and Local History: Visit downtown West Chester’s many restored historic homes, ride the West Chester Railroad, enjoy the art displays at the Brandywine River Museum, or see real helicopters at the American Helicopter Museum and Education Center.

Gardens and Parks: In West Chester, local public parks and gardens boast scenic nature trails, popular seasonal floral displays, and designated areas for picnics.

Nearby Cities: With all the excitement of downtown Philadelphia only minutes away, and New York City and Washington, D.C., also within easy traveling distance, there are limitless options for adventurous day trips and weekends away.



ELS ON CAMPUS

Four-Week Courses	English for Academic Purposes, Semi-Intensive English, American Explorer
Options Available	Class Visitation, Course Auditing, Concurrent Enrollment, Conversation Partnerships
Housing Options	Student Residence (on-campus), Homestay
Minimum Age	16
Host Institution	Public; Enrollment 16,611 Waive TOEFL® for ELS graduates*
Ranking	<i>U.S. News & World Report: #18 of "Top Public Schools in Regional Universities (North)" – 2016</i>
Sample Majors Included	Undergraduate: Computer Science; Finance; Management; Marketing; Mathematics Graduate: Computer Science; Public Administration; Teaching English as a Second Language
Address	Mitchell Hall, 675 S. Church Street, 4th Floor, Room 404 West Chester, Pennsylvania 19383 U.S.A.

*Accepted ELS Level and applicable degree program(s) vary by institution.





For more information on this Center, visit: SYDNEY.ELS.EDU

Sydney – City Centre

Sydney, New South Wales, Australia

ELS/Sydney is located in the centre of Sydney, just a few minutes' walk from the world-famous harbour, with public transport, shops, and attractions all nearby. Sydney is regularly voted one of the world's favourite and most livable cities, offering a great climate and a safe, friendly environment. Home to people from 180 nations, speaking 140 languages, this multicultural city is a fantastic place to study English and learn about world cultures.

Great Things to See and Do

Sydney Harbour: A visit to the Sydney Opera House and a walk across the Harbour Bridge are musts, but do not miss the quiet walking tracks and small secluded harbour-side beaches.

Ferry to the Park: Enjoy the salt air and take a ferry across the harbour to Manly to explore Sydney Harbour National Park.

Beaches: Explore Sydney's famous Bondi Beach and the other 100 beaches the city has to offer.

Dining: Sydney's ethnic food scene is among the world's best.



Four-Week Courses	General English (Day); General English (Evening); IELTS™ Preparation; Academic English 2; Academic English 3; Academic English 4; High School Preparation; Junior Holiday English; School Holiday Program
Options Available	Group Study Tours
Housing Options	Student Residence (off-campus), Homestay
Minimum Age	High School Preparation: 13-17 years; Junior Holiday English: 13-17 years; School Holiday Program: 13-17 years; All other programs: 18 years+
Address	Level 1, 17 O'Connell Street Sydney, NSW 2000 Australia





For more information on this Center, visit: ELSCANADA.COM

Toronto – City Center

Toronto, Ontario, Canada

ELS/Toronto is situated in the heart of Canada’s largest city, in the midst of the country’s commercial and cultural center. This dynamic city Center is within walking distance of many attractions, including museums and galleries, sports venues, and theaters. Venture outside of downtown to see the natural beauty of the Toronto Islands. Trips to Niagara Falls, and tours of Ottawa, Montreal, Quebec, New York City, Chicago, and Boston are among the most popular weekend activities.

Great Things to See and Do

CN Tower: Elevators bring visitors to the top of the 553-meter CN tower (the second-tallest freestanding building in the world) in less than a minute. The Sky Pod, at 446 meters, is one of the highest public observation areas in the world.

Toronto Islands: The Toronto Islands provide a great, refreshing escape from downtown with a beautiful view of Lake Ontario on one side and the city skyline on the other. The Islands can be reached by ferry year-round.

Royal Ontario Museum: The Royal Ontario Museum (ROM) is among the world’s leading museums of natural history and world cultures.



URBAN

Four-Week Courses	English for Academic Purposes, General English, Semi-Intensive English
Options Available	Executive Programs, English for Business, Complete Prep Program for the TOEFL iBT®, IELTS™ Prep
Housing Options	Homestay, Limited Apartment-Style Hotels, Limited Dormitory Accommodation (summer only)
Address	36 Victoria Street Toronto, Ontario M5C 1H3 Canada





For more information on this Center, visit: ELSCANADA.COM

Vancouver – City Center

Vancouver, British Columbia, Canada

ELS/Vancouver is conveniently located in the heart of downtown Vancouver, a city of rare natural beauty and diverse cultures considered to be the jewel of Canada’s west coast. Vancouver is consistently ranked among the most livable cities in the world, and enjoys comfortable temperatures year-round. Visits to Whistler, Victoria and Seattle, as well as multiday tours of the Rocky Mountains are popular weekend student activities.

Great Things to See and Do

Stanley Park: This 400-hectare park close to downtown is home to many popular sights – including totem poles and the renowned Seawall for walking and biking.

Granville Island: One of Vancouver’s most beloved attractions, Granville Island’s former factories now house trendy galleries, restaurants and theaters.

Capilano Suspension Bridge: The oldest tourist attraction in the city (originally constructed in 1889), the 140-meter-long, 70-meter-high bridge offers spectacular views of the Capilano River below.



Four-Week Courses	English for Academic Purposes, General English, Semi-Intensive English
Options Available	Executive Programs, English for Business, Complete Prep Program for the TOEFL iBT®, IELTS™ Prep, Summer and Winter Youth Programs
Housing Options	Homestay, Limited Apartment-Style Hotels, Limited Dormitory Accommodation (summer only)
Address	549 Howe Street, 6th Floor Vancouver, British Columbia V6C 2C2 Canada





For more information on this Center, visit: ELS.CN

Shanghai – City Center

Shanghai, China

ELS/Shanghai is situated in a historic 1920s compound that resembles a university-style campus in central Shanghai. The campus contains an auditorium, student lounge, and smart classrooms in a beautiful garden setting. At ELS/Shanghai, you can begin your English studies so that you are ready to complete ELS Levels 110 –112 in other countries. You will study the same curriculum and use the same materials and software offered at ELS’s other locations worldwide.

Great Things to See and Do

The Bund: Take classic skyline photos with the Oriental Pearl TV Tower, the Shanghai Tower, and other skyscrapers standing across the Huangpu River.

Shanghai Museum: Frequently called the best museum in all of China, this expansive museum charts the nation’s history from ancient to modern times.

Jing’an Temple: Just a short walk from ELS, the Buddhist Jing’an Temple has a history that dates back nearly 2,000 years.

Shanghai Disneyland: Opened in June 2016, Shanghai Disneyland features Disneyland Park, two themed hotels, performance venues, and retail shopping.

Former French Concession: Stroll through quiet neighborhoods, experience Shanghai’s café culture, and shop at unique boutiques.



URBAN

Four-Week Courses	English for Academic Purposes
Options Available	WEP – Saturday classes
Minimum Age	12 for EAP; 11 for WEP
Address	201 Anfu Road, Xuhui District Shanghai, China 200031





For more information on this Center, visit: ELS.EDU/CHENNAI | UNIVERSITYSEARCH.COM/SRM

SRM University

Chennai, Tamil Nadu, India

ELS/Chennai is on the campus of SRM University in Chennai, India. ELS students have full access to SRM's library, recreation facilities, computer labs, and other facilities. The high-tech and well-landscaped campus is located 40 kilometers from the center of Chennai. The historic and culturally rich city of Chennai, located on the Bay of Bengal in eastern India, is the capital of Tamil Nadu and is home to over four million people.

Great Things to See and Do

Marina Beach: Chennai's most famous tourist attraction, Marina Beach is the second-longest beach in the world, stretching 12 kilometers along the Bay of Bengal!

Mahabalipuram: Marvel at the Stone Temples, five freestanding temples with ancient carvings dating back to the Pallava dynasty of the seventh and eighth centuries.

Theme Parks: There are several theme parks located near Chennai, which feature rides, water attractions and entertainment, including VGP Universal Kingdom, Queens Land, and VGP Golden Beach Resort.



ELS ON CAMPUS

Four-Week Courses	English for Academic Purposes
Options Available	Class Visitation, Course Auditing, Conversation Partnerships
Housing Options	Student Residence (on-campus)
Host Institution	Private; Enrollment 44,000
Ranking	<i>Higher Education Review (HER): #1 of "Top 25 Private/Deemed Universities in India" – 2015</i>
Sample Majors Included	<p>Undergraduate: Engineering: Computer Sciences & Nanotechnology, Biomedical, Mechanical, Aerospace and Automobile; Business Administration and Hotel Management; Nursing & Pharmacy</p> <p>Graduate: Engineering: Computer Sciences & Nanotechnology, Biomedical, Mechanical, Aerospace and Automobile; Business Administration and Hotel Management; Nursing & Pharmacy</p>
Address	SRM University, SRM Nagar, National Highway 45 Kattankulathur, Chennai, Tamil Nadu 603203 India





For more information on this Center, visit: ELS.EDU.MY | UNIVERSITYSEARCH.COM/UPM

Universiti Putra Malaysia

Kuala Lumpur

ELS/UPM is located at Universiti Putra Malaysia (UPM), a leading research university with a true sense of campus community located in a township called Serdang in the state of Selangor in central peninsular Malaysia, about 30 minutes from the capital city, Kuala Lumpur. The campus is close to shopping malls filled with popular brands, entertainment centers, and restaurants. You can also enjoy the outdoors at the on-campus golf course and recreational parks.

Great Things to See and Do

UPM Stadium: UPM Stadium includes a fully equipped gym, sports hall, outdoor swimming pool, under-soil drainage football pitch, AstroTurf pitch for hockey, tennis courts, and an excellent floodlit athletics and football stadium.

Ayer Hitam Forest Reserve: The Ayer Hitam Forest Reserve is located 23 miles from UPM and 45 miles from Kuala Lumpur. The Forest Reserve offers the exciting sport of paintball to staff and students of UPM.

UPM Edu-Park: Have fun and learn about nature at this beautiful estate. Try your hand at some agricultural techniques, learn about UPM's agricultural research, and pick some fresh produce grown by university experts.

Equestrian Park: This four-hectare equine center is located adjacent to one of the largest stables in the area and is ideal for horseback riding.

Wakeboarding: Surf across the lake at The Mines while being towed by a speedboat. Located just minutes from the UPM campus, this activity is both an adventure and a great way to cool down in the warm Malaysian weather.



ELS ON CAMPUS

Four-Week Courses	Certified Intensive English Programme
Options Available	IELTS™ Test Preparation Programme, TOEFL® Test Preparation Programme, University Class Visits, Auditing, Credit-Bearing University Programs, Summer/Winter University Programs
Housing Options	Student Residence (on-campus), Student Residence (off-campus)
Host Institution	Public; Enrollment 28,381
Ranking	QS University Ranking: Asia #66
Sample Majors Included	Undergraduate: Agriculture; Business; Engineering Graduate: Agriculture; Information Technology; Science
Address	Ground Floor, Block A, Putra 10.6, North Campus, Universiti Putra Malaysia 43400 UPM, Serdang, Selangor, Malaysia





For more information on these Centers, visit: ELS.EDU.MY

Locations in Malaysia

City Centers

Johor Bahru – City Center

ELS/Johor Bahru is located in the Pelangi district, a premier residential area close to the city. It is conveniently annexed to Plaza Pelangi, a shopping centre that has a host of restaurants, fast-food outlets, fashion stores, supermarkets, and department stores. The center is also located 10 minutes away from the Malaysia-Singapore border.

Kuala Lumpur – City Center

ELS/Kuala Lumpur is located in the prestigious Golden Triangle business district of Kuala Lumpur. This Center enjoys a panoramic view of the capital city's skyline, as it faces one of the tallest buildings in the world – the Petronas Twin Towers. Kuala Lumpur, the fastest-growing metropolitan region, is a paradise for shopping, cosmopolitan living and nightlife. Local attractions include Batu Caves, the Jamek Mosque, Central Market, Petaling Street and the Kuala Lumpur Tower.

Subang Jaya – City Center

ELS/Subang Jaya is conveniently and strategically located in a higher education hub only 20 minutes away from Kuala Lumpur. It is home to many large international universities and colleges, such as Taylor's University, INTI International University, Monash University and Sunway University. Local attractions include Empire Shopping Mall, Sunway Lagoon Theme Park and Sunway Pyramid.





For more information on this Center, visit: ELS.EDU.PA

Panama City – City Center

Panama City, Panama

ELS/Panama is conveniently situated in Paitilla, one of the most prestigious areas of Panama City. The Center is just a few minutes' walk from shopping malls, entertainment, hotels, restaurants, and clubs. National parks and museums are also only a short drive away. ELS plans a wide range of activities, including visits to local attractions; sporting events; trips to nearby theaters, museums and restaurants; conversation partners; and local excursions.

Great Things to See and Do

Casco Viejo: The “Old Walled City” of Panama, declared a historical monument by UNESCO, is not just about history; it is also a place to sample different foods and drinks in open-air cafés.

Beaches: The San Blas Archipelago is famous worldwide for its beautiful islands, formed of coral and surrounded by crystal clear water, perfect for snorkeling, diving and having fun.

Dining: Because of Panama’s diverse Spanish, American, Afro-Caribbean and indigenous influences, Panamanian cuisine ranges from the familiar to the ultra-exotic.



Four-Week Courses	Intensive English Program (General English) – 30 lessons; Levels 101 to 109 are available in Panama; you must complete Levels 110 to 112 in Canada or the United States
Housing Options	Student Residence (off-campus), Homestay
Minimum Age	14
Address	Plaza Paitilla Mall, 2nd Floor, Office 63, Avenida Balboa and Via Italia Panama City, Panama





For more information on these Centers, visit: [ELS.EDU/INTERNATIONAL](https://els.edu/international)

Locations in Saudi Arabia

City Centers



URBAN

Riyadh – City Center and Jeddah – City Center

The first ELS Center in Saudi Arabia was established in 1995 in the capital city of Riyadh; there is also an ELS Center in Riyadh, near the landmark Kingdom Tower, dedicated to serving ladies. There is also an ELS Center in northern Jeddah on Prince Sultan Street. The Centers in Saudi Arabia provide English for students of all levels. The Centers' 20 years of experience in Saudi Arabia ensure that they meet the needs of local students.



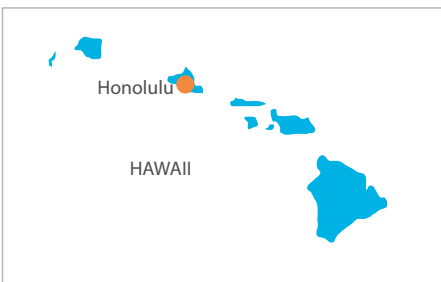
A World of Options Awaits You

ELS CENTER	HOST OR AFFILIATED INSTITUTION (IF APPLICABLE)	PAGE
USA		
▲ Atlanta, Georgia	City Center	39
● Atlantic City, New Jersey	Stockton University	88
▲ Berkeley, California	City Center	43
▲ Boston – Downtown, Massachusetts	City Center	44
● Bowling Green, Ohio	Bowling Green State University	45
● Bristol, Rhode Island	Roger Williams University	78
■ Charlotte, North Carolina	Center Affiliated with Johnson & Wales University – Charlotte Campus	67
● Chicago – Romeoville, Illinois	Lewis University	68
● Chicago, Illinois	Dominican University	52
● Cincinnati, Ohio	University of Cincinnati	90
■ Clemson – Greenville, South Carolina	Center Affiliated with Clemson University Center of Greenville	48
● Cleveland, Ohio	Case Western Reserve University	47
● Dallas, Texas	The University of Texas at Dallas	99
● DeKalb, Illinois	Northern Illinois University	75
● Denver, Colorado	Front Range Community College	60
● Fort Wayne, Indiana	Indiana University–Purdue University Fort Wayne	64
● Grand Forks, North Dakota	University of North Dakota	95
● Grand Rapids, Michigan	Grand Valley State University	61
● Hollywood, California	Los Angeles Film School	69
● Honolulu, Hawaii	Hawai'i Pacific University	62
■ Houston – Clear Lake, Texas	Center Affiliated with University of Houston – Clear Lake	91
■ Houston, Texas	Center Affiliated with University of St. Thomas – Houston	96
▲ Indianapolis, Indiana	City Center	65
● Johnson City, Tennessee	East Tennessee State University	54
● Kenosha, Wisconsin	University of Wisconsin – Parkside	101
● La Verne, California	University of La Verne	92
● Lake Charles, Louisiana	McNeese State University	73
■ Lubbock, Texas	Center Affiliated with Texas Tech University	89
● Melbourne, Florida	Florida Institute of Technology	58
● Miami, Florida	Barry University	41
● Milwaukee, Wisconsin	Marquette University	72
● Myrtle Beach, South Carolina	Coastal Carolina University	49
● Nashville, Tennessee	Middle Tennessee State University	74
● New Haven, Connecticut	University of New Haven	94
● New York – Hofstra, New York	Hofstra University	63
▲ New York – Manhattan, New York	City Center	71
● New York – Riverdale, New York	College of Mount Saint Vincent	50
● Oklahoma City, Oklahoma	Oklahoma City University	76
■ Orlando, Florida	Center Affiliated with Stetson University	87

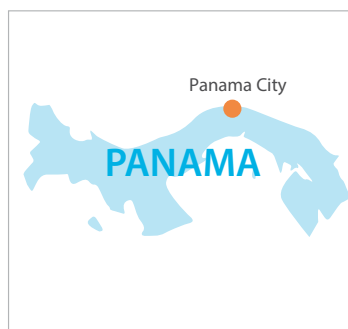
ELS CENTER	HOST OR AFFILIATED INSTITUTION (IF APPLICABLE)	PAGE
USA		
● Philadelphia – Camden, New Jersey	Rutgers University–Camden	79
● Philadelphia – West Chester, Pennsylvania	West Chester University	102
● Philadelphia, Pennsylvania	Saint Joseph's University	80
● Pittsburgh, Pennsylvania	Point Park University	77
● Portland, Oregon	Concordia University	51
● Richmond, Kentucky	Eastern Kentucky University	55
● Rochester, New York	State University of New York – Brockport	86
● Ruston, Louisiana	Louisiana Tech University	70
● St. Louis, Missouri	University of Missouri – St. Louis	93
● St. Paul, Minnesota	University of St. Thomas – Minnesota	97
● St. Petersburg, Florida	Eckerd College	56
● San Antonio, Texas	University of the Incarnate Word	100
▲ San Diego, California	City Center	81
▲ San Francisco – Downtown, California	City Center	82
● San Francisco – North Bay, California	Dominican University of California	53
● San Jose, California	International Technological University	66
▲ Santa Barbara, California	City Center	83
▲ Santa Monica, California	City Center	84
▲ Seattle, Washington	City Center	85
■ Silicon Valley, California	Center Affiliated with Foothill College and De Anza College	59
● Sioux Falls, South Dakota	Augustana University	40
● Tacoma, Washington	Bates Technical College	42
● Tampa, Florida	The University of Tampa	98
● Teaneck, New Jersey	Fairleigh Dickinson University	57
● Thousand Oaks, California	California Lutheran University	46

AUSTRALIA	▲ Sydney	City Centre	103
CANADA	▲ Toronto	City Center	104
	▲ Vancouver	City Center	105
CHINA	▲ Shanghai	City Center	106
INDIA	● Chennai	SRM University	107
MALAYSIA	● Kuala Lumpur	Universiti Putra Malaysia	108
	▲ Johor Bahru	City Center	109
	▲ Kuala Lumpur	City Center	109
	▲ Subang Jaya	City Center	109
PANAMA	▲ Panama City	City Center	110
SAUDI ARABIA	▲ Jeddah	City Center	111
	▲ Riyadh	City Center	111

ACROSS NORTH AMERICA AND AROUND THE



GLOBE, ELS HAS A PERFECT LOCATION FOR YOU.



ELS BY THE NUMBERS

55+

years of dedication to academic quality and student success.



1.2+

More than 1.2 million students have attended ELS.



143

Students from 143 different nations have attended ELS.



80+

80+ locations worldwide



8

ELS Centers are located in 8 countries.



650

ELS opens doors to more than 650 schools worldwide



102

Local Counseling experts are available in 102 countries.



ELS Language Centers in the U.S.A. is accredited by the Accrediting Council for Continuing Education & Training (ACCET) – a national accrediting agency listed by the U.S. Secretary of Education. ELS schools are approved to offer the following programs: Intensive Programs, Semi-Intensive Program, Complete Prep Program for the TOEFL iBT®, the American Explorer Program, Business English Programs, CELTA, TEFL and Special Programs. This school is authorized under federal law to enroll nonimmigrant alien students.

ELS Language Centers and its staff are members of:

- American Association of Collegiate Registrars and Admissions Officers (AACRAO)

- English U.S.A.
- ALTO: Association of Language Travel Organisations
- NAFSA: Association of International Educators
- Teachers of English to Speakers of Other Languages (TESOL)
- AIEA (Association of International Education Administrators)
- AIRC (American International Recruitment Council)
- Canadian locations and programs accredited by Languages Canada

Universal Education Centre Pty. Ltd. CRICOS Code: 00053J
 ELS Educational Services Australia Pty. Ltd. CRICOS 03357B



HEADQUARTERS

7 Roszel Road
 Princeton, New Jersey 08540 USA

Tel: +1.609.759.5500
 Fax: +1.609.524.9885

Email: info@ELS.edu

CENTRAL ADMISSIONS

7 Roszel Road
 Princeton, New Jersey 08540 USA

Tel: +1.609.759.5900
 Fax: +1.609.524.9880

Email: admissions@ELS.edu

© Copyright 2016 ELS Educational Services, Inc. – a Berlitz company.

For more information, please contact your ELS authorized Counselor (see ELS.edu).

This catalog is now available in Arabic, Chinese (Simplified), Chinese (Traditional), English, Japanese, Korean, Portuguese, Russian, Spanish, Thai, Turkish and Vietnamese.

"ELS Language Centers," "Contact America!" and "We Teach English to the World" are registered trademarks of ELS Educational Services, Inc. Other trademarks are the property of their respective owners.

ELS Language Centers is a Berlitz company.

ETS, the ETS logo and TOEFL® are registered trademarks of Educational Testing Service (ETS) and Criterion™ is a service mark of ETS used with permission of ETS.

ACCET: 1722 N Street NW, Washington, D.C. 20036, +1.202.955.1113

