



CINEMAMAKEUP

S C H O O L

Dear Prospective Student,

We are delighted to hear about your interest in Cinema Makeup School! In this package you will find information about our school and the courses we offer, along with information regarding housing options and student loans.

At Cinema Makeup School our principal goal is to provide the best education possible and prepare you for employment in the field of Makeup Artistry. Our instructors are Professional Makeup Artists, and have years of experience training individuals in the area of Makeup and many of their students have gone on to achieve a high degree of success.

Our programs are geared towards the “hands-on” approach to learning the true art of makeup artistry. We pride ourselves in offering the student, a very unique learning environment and are especially open-minded towards your creative growth. We feel your success is our success.

Enclosed you will find an application, instructions and everything you will need to begin the enrollment process. If you would like further details please visit our web site at www.cinemamakeup.com or feel free to call us and we can discuss what programs would best suit you. Also, if you would like to take a tour of our school, please call to make an appointment.

Thank you for your interest in Cinema Makeup School!

Sincerely,

The Cinema Makeup School Staff



CINEMAMA MAKEUP S C H O O L

APPLICATION FOR ADMISSION

Name: _____ Date of Birth (DD/MM/YYYY): ____/____/____

Address: _____

City: _____ State/Province: _____ Zip/Postal Code: _____

Country: _____ Mobile Phone: _____

Email: _____

Level of English (Spoken): Native Good Fair Poor None

EDUCATION (Select all that apply)

High School GED College Graduation Date (MM/YYYY): _____

By signing below, I certify that I have a high school diploma, GED, and/or college degree.

Desired Start Date: _____

Do you plan on purchasing material kit(s) form Cinema Makeup School: Yes No

Course Interest:

- Beauty (4 wks)
- Character (4 wks)
- Prosthetics (4 wks)
- Special Makeup Effects (4 wks)
- Airbrush Makeup (1 wk)
- Hairstyling (1 wk)

Concept & Advanced Classes

- Digital FX (1 wk)
- Z Brush (1 wk)
- Creature Maquette (1 wk)
- Advanced Beauty (3 wks)
- Advanced Lab (4 wks)
- Makeup FX Design (1 wk)

Programs & Tracks

- High Fashion Program (6 wks)
- Professional Program (10 wks)
- Film & Television Program (14 wks)
- Master Makeup Program (18 wks)
- FX Track (25 wks)
- Complete Track (29 wks)

How did you hear about CMS?: _____

Are you a veteran?: Yes No

Have you paid the \$100 Enrollment Fee? Yes, date & means of payment: _____ No

Do you need housing recommendations? (Housing is arranged by student and is their responsibility): Yes No

By signing below, I certify I have had the opportunity to review the school's course catalog and Student Performance Fact Sheet.

Signature

Date



CINEMA MAKEUP SCHOOL CATALOG SUPPLEMENT JANUARY 1, 2018 – DECEMBER 31, 2018

PROGRAM COSTS

	Tuition	Lab Fee	Materials	Total
MASTER MAKEUP PROGRAM	\$12,600	\$2,100	\$2,620	\$17,320
FILM & TELEVISION PROGRAM	\$11,500	\$1,300	\$2,620	\$15,420
PROFESSIONAL MAKEUP ARTISTRY PROGRAM	\$8,000	\$400	\$2,460	\$10,585
HIGH FASHION/PHOTOGRAPHIC	\$4,500	\$150	\$1,770	\$6,420
CREATURE CONCEPT DESIGN	\$2775	\$225	N/A	\$3,000

CLASS COSTS

	Tuition	Lab Fee	Materials	Total
BEAUTY MAKEUP	\$3,000	\$50	\$1,475	\$4,525
CHARACTER MAKEUP	\$4,000	\$250	\$840	\$5,090
PROSTHETIC MAKEUP	\$4,000	\$900	\$590	\$5,490
AIRBRUSH MAKEUP	\$850	\$50	\$230	\$1,130
PHOTOGRAPHIC HAIRSTYLING	\$850	\$50	\$65	\$965
SPECIAL MAKEUP EFFECTS	\$4,000	\$800	\$590	\$5,390
DIGITAL FX MAKEUP*	\$950	\$50	N/A	\$1,000
CREATURE MAQUETTE SCULPTURE*	\$875	\$125	N/A	\$1,000
ZBRUSH DIGITAL CREATURE DESIGN*	\$950	\$50	N/A	\$1,000
ADVANCED BEAUTY THEORY*	\$3,000	\$250	\$60	\$3,310

*-DENOTES ADVANCED CONCEPT CLASS

Additional class equipment may be required in addition to the priced materials.

STRF: STUDENT TUITION RECOVERY FUND 76215

You must pay the state-imposed assessment for the Student Tuition Recovery Fund (STRF) if all of the following applies to you:

1. You are a student in an educational program, who is a California resident, or are enrolled in a residency program, and prepay all or part of your tuition either by cash, guaranteed student loans, or personal loans, and
2. Your total charges are not paid by any third-party payer such as an employer, government program or other payer unless you have a separate agreement to repay the third party.

You are not eligible for protection from the STRF and you are not required to pay the STRF assessment, if either of the following applies:

1. You are not a California resident, or are not enrolled in a residency program, or
2. Your total charges are paid by a third party, such as an employer, government program or other payer, and you have no separate agreement to repay the third party.

The State of California created the Student Tuition Recovery Fund (STRF) to relieve or mitigate economic losses suffered by students in educational programs who are California residents, or are enrolled in a residency programs attending certain schools regulated by the Bureau for Private Postsecondary and Vocational Education.

You may be eligible for STRF if you are a California resident or are enrolled in a residency program, prepaid tuition, paid the STRF assessment, and suffered an economic loss as a result of any of the following:

1. The school closed before the course of instruction was completed.
2. The school's failure to pay refunds or charges on behalf of a student to a third party for license fees or any other purpose, or to provide equipment or materials for which a charge was collected within 180 days before the closure of the school.
3. The school's failure to pay or reimburse loan proceeds under a federally guaranteed student loan program as required by law or to pay or reimburse proceeds received by the school prior to closure in excess of tuition and other costs.
4. There was a material failure to comply with the Act or this Division within 30 days before the school closed or, if the material failure began earlier than 30 days prior to closure, the period determined by the Bureau.
5. An inability after diligent efforts to prosecute, prove, and collect on a judgment against the institution for a violation of the Act.

However, no claim can be paid to any student without a social security number or a taxpayer identification number.

REGISTRATION FEE: A non-refundable registration fee of \$100 is required in addition to tuition and fees.

I-20 PROCESSING FEE: For international students requiring an I-20 Form, an additional processing fee of \$100 is required in addition to the registration fee.



CINEMAMA MAKEUP S C H O O L

SCHEDULE OF START DATES

TRACKS

<p>COMPLETE TRACK:</p> <p>Master Makeup Program Creature Maquette Sculpting Digital Effects Z Brush Advanced Beauty Theory Advanced Lab Techniques</p>	<p><u>COMPLETE TRACK</u> (28 weeks // 1030 Clock Hours)</p> <p>January 2- July 13*+ January 22- August 10*+ February 20- September 7*+ March 19- October 5*+ April 16- November 2*+ May 14- December 7*+ June 11- February 1, 2019*+ July 9- March 1, 2019*+ August 6 - March 29, 2019*+ September 4- April 26, 2019*+ October 1- May 27, 2019*+ October 29- June 29, 2019*+</p> <p>EVENING Complete Track</p> <p>1030 clock hours July 30- September 6, 2019*+</p>	<p><u>FX TRACK</u> (25 weeks // 910 Clock Hours)</p> <p>January 2- July 13*+ January 22- August 10*+ February 20- September 7*+ March 19- October 5*+ April 16- November 2*+ May 14- December 7*+ June 11- February 1, 2019*+ July 9- March 1, 2019*+ August 6 - March 29, 2019*+ September 4- April 26, 2019*+ October 1- May 27, 2019*+ October 29- June 29, 2019*+</p> <p><u>EVENING FX Track</u></p> <p>July 30- September 6, 2019*+</p>	<p>FX TRACK:</p> <p>Master Makeup Program Creature Maquette Sculpture Digital Effects Z Brush Advanced Lab Techniques</p> <p><i>All FX Track students will have a 3 week minimum break</i></p>
--	--	--	--

PROGRAMS

<p>MASTER MAKEUP PROGRAM (18 weeks // 630 Clock Hours)</p> <p>January 2- May 18 *+ January 29- June 15*+ February 26 – July 13*+ March 26- August 10*+ April 23- September 7*+ May 21- October 5*+ June 18- November 2*+ July 16- December 7*+ August 13 – February 2, 2019 *+ September 10- March 1, 2019*+ October 8- March 29, 2019*+ November 5- April 26, 2019*+</p> <p>EVENING MASTER (630 Clock Hours) July 30- May 24, 2019</p>	<p>FILM & TELEVISION PROGRAM (14 weeks // 490 Clock Hours)</p> <p>January 2- April 20*+ April 23- August 10*+ August 13- December 7*+</p>	<p>PROFESSIONAL MAKEUP ARTISTRY PROGRAM (10weeks // 350 Clock Hours)</p> <p>February 26- May 18*+ May 21- August 10*+ July 16- October 5*+</p>	<p>HIGH FASHION/PHOTOGRAPHIC PROGRAM (6 weeks // 210 Clock Hours)</p> <p>January 2- February 9* January 29- March 10 February 26- April 6 March 26- May 4 April 23- June 1* June 18- July 27* July 16- August 24 August 13- September 21* September 10- October 19 October 8- November 16 November 5- January 18, 2019*+</p>
---	---	--	--



CINEMAMA MAKEUP S C H O O L

CLASSES

<p>BEAUTY MAKEUP <i>(4 weeks // 140 Clock Hours)</i></p> <p>February 26- March 23 April 23-May 18 June 18-July 13* September 10- October 5</p>	<p>CHARACTER MAKEUP <i>(4 weeks // 140 Clock Hours)</i></p> <p>January 2- January 26* January 29- February 23 * February 26- March 23 March 26- April 20 April 23- May 18 May 21- June 15* June 18 -July 13* August 13- September 7* September 10- October 5 October 8- November 2 November 5-December 7*+</p>	<p>PROSTHETIC MAKEUP <i>(4 weeks // 140 Clock Hours)</i></p> <p>January 2- January 26* January 29- February 23 * February 26- March 23 March 26- April 20 April 23- May 18 May 21- June 15* June 18 -July 13* July 16- August 10 September 10- October 5 October 8- November 2 November 5-December 7*+</p> <p>EVENING PROSTHETIC <i>(140 Clock Hours)</i></p> <p>January 2- February 23* September 24- November 16*</p>	<p>SPECIAL MAKEUP EFFECTS <i>(4 weeks // 140 Clock Hours)</i></p> <p>January 2- January 26* January 29- February 23 * February 26- March 23 March 26- April 20 April 23- May 18 May 21- June 15* June 18 -July 13* July 16- August 10 August 13- September 7* October 8- November 2 November 5-December 7*+</p> <p>EVENING SPECIAL EFFECTS <i>(140 Clock Hours)</i></p> <p>March 5- April 29 November 26- February 10. 2019*+</p>
<p>ZBRUSH <i>(1 week // 40 clock hours) This class runs 9am – 5pm</i></p> <p>January 29- Feb. 2 February 26- March 2 April 21-25 June 18-22 July 16-20 August 13-17 September 10-14 November 5-9 Dec. 10-14</p>	<p>DIGITAL FX <i>(1 week // 40 clock hours) This class runs 9am – 5pm</i></p> <p>January 15-19 January 22-26 February 12-16 February 20-23* March 19-23 April 16-20 July 9-13 August 6-10 September 4-7* October 1-5 Oct. 29- Nov. 2</p>	<p>CREATURE MAQUETTE <i>(1 week // 40 clock hours) This class runs 9am – 5pm</i></p> <p>January 22-26 February 20-23* March 19-23 April 16-20 May 14-18 June 11-15 August 6-10 September 4-7* October 1-5 October 29-Nov. 2 December 3-7 Dec. 10-14</p>	<p>AIRBRUSH <i>(1 week // 35 clock hours)</i></p> <p>Please contact CMS for most up-to-date information on start and end dates</p> <p>213-368-1234 info@cinemamakeup.com</p>



CINEMAMAKEUP

S C H O O L

<p>PHOTOGRAPHIC HAIRSTYLING <i>(1 week // 35 clock hours)</i></p> <p>Please contact CMS for most up-to-date information on start and end dates</p> <p>213-368-1234 info@cinemakeup.com</p>	<p>ADVANCED BEAUTY THEORY <i>(3 weeks // 120 clock hours)</i> <i>Prerequisite: contact CMS</i></p> <p>January 2- January 26* January 29- February 23* February 26- March 23 March 26- April 20 April 23- May 18 May 21- June 15* June 18- July 13* July 16- August 10 August 13- September 7* September 10- October 5 October 8- November 2 November 5 - December 14*+</p>	<p>ADVANCED LAB TECHNIQUES <i>(3 weeks // 120 clock hours)</i> <i>Prerequisite: contact CMS</i></p> <p>January 8-26 February 5-23* March 5-23 April 30- May 18 May 29- June 15* June 25- July 13* July 23- Aug. 10 Aug. 20- Sept. 7* Sept. 17- Oct. 5 Nov. 12- Dec. 7*+</p>	
--	--	---	--

+ Denotes irregular scheduling due to holidays and breaks. Call 213.368.1234 for details.

* Occasionally classes will run from 9a-5:30p to make up for holidays. [NOTE: Class and course times and start dates subject to change without notice.]



SCHOOL & OFFICE HOURS

DAY CLASSES

Monday – Friday // 9 am – 4 pm

EVENING CLASSES

Monday – Friday // 6:15 pm – 10 pm

ADVANCED & CONCEPT CLASSES

Monday – Friday // 9 am – 5 pm

OFFICE HOURS

Monday – Friday // 8:30 pm – 5:30 pm

Closed on weekends

HOLIDAYS AND BREAKS

Class will not be held on these dates in observance of the following Holidays:

New Years Day: January 1

Labor Day: September 3

Presidents Day: February 19

Thanksgiving Break: November 22 - 23

Memorial Day: May 28

Winter Break: December 17-January 4, 2018

Independence Day: July 4

FACULTY - SELECT INSTRUCTOR & STAFF BIOS

Ve Neill, Director of Education

Director of Education at Cinema Makeup School, Ve is among the world's best-known living makeup artists. With 3 Academy Awards (7 nominations), two Emmys, one BAFTA, and a client list ranging from Jennifer Lawrence to Jack Nicholson, there are few artists who can match Ve's body of work. She grew into international admiration and acclaim for her versatile work ranging from Tim Burton collaborations, to hit franchises *Pirates of the Caribbean* and *The Hunger Games*, to the studied realism of Hoffa. Ve is also familiar to television audiences as a judge on Syfy's *Face Off* and *Game Face* makeup effects competitions.

Leonard Engelman, Director of Education Emeritus

Leonard is both Director of Education Emeritus and chair of the Leonard Engelman Fellowship Program. He is currently serving on the Board of Governors of the Makeup Artist and Hairstylists Branch of the Academy of Motion Picture Arts and Sciences. Leonard has worked professionally as a makeup artist for over fifty years. His feature credits include such classics as Alfred Hitchcock's *Topaz*, Ivan Reitman's *Ghostbusters*, *Rambo* starring Sylvester Stallone, *Sleepless in Seattle* with Tom Hanks and Meg Ryan, and *Moonstruck* and *Burlesque*, both featuring Cher.

Lee Joyner, Director of Admissions

Lee taught at CMS for years before accepting his current position as Director of Admissions. In addition to his work at the school, Lee is a working makeup artist and sculptor with a long list of feature credits including *Kiss Kiss Bang Bang*, *Godzilla*, *Stargate SG-1*, *Mimic*, *Star Trek: Voyager*, and *Star Trek: Beyond* as well as work with musical artists Usher, Slipknot, and Alice Cooper

(SELECT INSTRUCTOR & STAFF BIOS contd.)**Michael Spatola**, Chief Academic Officer, Character Makeup/Prosthetic Makeup/Special Effects

Mike is a top special effects makeup artist who has been nominated for two Emmys. His work in the makeup and art departments has been featured in such films as *Iron Man 3*, *Terminator 2: Judgment Day*, *Stargate*, *Return of the Living Dead Part II*, *Gettysburg*, and the film adaptation of *21 Jump Street*.

Nelly Recchia, Beauty Makeup/Airbrush Makeup

Nelly is a world-renowned airbrush and bodypaint artist who has worked with artists including Lady Gaga, Katy Perry, Marilyn Manson, and Dita von Teese. Her work has earned her a cover story in *Makeup Artist Magazine* among countless other accolades and honors.

Rod Maxwell, Character Makeup/Prosthetic Makeup

Rod is best known for his work on *The Wishing Well*, an experimental one-man production where Rod, as the only actor, turns himself into every character in the film. A master at disguise and leader in digital makeup developments in the industry, Rod is also known for his creations on Season 3 of Syfy's *Face Off*.

Shannon Shea, Prosthetic Makeup/Special Effects

Over a storied 20+ year career as an artist and shop supervisor in top effects labs like Stan Winston Studios, Rick Baker's Cinovation Studios and K.N.B. EFX Group, Shannon has worked on some of the biggest blockbusters of all time, from cult classics like *Evil Dead II* and *From Dusk Till Dawn* to blockbusters like *Terminator 2: Judgment Day* and *Jurassic Park*.

Gayla Basehart, Beauty Makeup

Gayla is an in-demand beauty makeup artist working for major networks and celebrity clients that range from A-list actors to famous athletes and TV presenters. As her most recent work is featured on HBO Boxing and UFC on Fox, Gayla brings not only skill, but knowledge of the makeup artist union to the classroom.

Kris Kobzina, Prosthetic Makeup/Special Effects

Kris Kobzina has an extensive background as a special effects artist and lab technician. He's worked on such high-profile projects as *Spider-Man*, *Daredevil*, and *X-Men: The Last Stand*. He was also a finalist on season 4 of Syfy network's hit reality series *Face Off*.

Andrew Velazquez, Beauty Makeup

With experience in every facet beauty makeup from bridal to avant garde, Andrew's work has been featured across mediums from print, to red carpet, to television and music video. A licensed cosmetologist, Andrew also owns and operates his own salon, as well as maintains an active social media presence. Recently you may have watched him on Lifetime's makeup competition show *American Beauty Star*.

[NOTE: All CMS instructors are working makeup professionals, many of whom maintain busy work schedules on major film, television and fashion projects in addition to teaching. As a result, availabilities for specific instructors are not always constant, and class/instructor pairings are subject to change without notice. CMS maintains an extensive set of industry contacts and only hires top artists with at least five years of professional industry experience as instructors.]

HOUSING LIST

The housing options listed below are conveniently located near the school within walking distance or by bus or subway. For bus/subway routes and timetables, please visit the Los Angeles County Metropolitan Transportation Authority's website at www.mta.net.

We advise you to call these businesses for their current rates as they are subject to change without notice. Research each of these options to determine which one will meet your unique housing requirements. Rates listed here are the lowest quotes; please call for current rate information

DORM-STYLE HOUSING

Oxford Mansion

350 S Oxford Ave
Los Angeles, CA 90020
Distance: **0.4 miles**
www.oxfordmansion.com (see photos)
714-323-0606
Private room with community living space.

Gramercy Place

1310 S Gramercy Pl
Los Angeles, CA 90019
(323) 733-6168
www.1310gramercy.com
Rates: Studios Starting at \$700 and 1bedroom starting at \$950/month
Distance: **1.4 Miles**

Hobart Residence

528 S Hobart
Los Angeles, CA 90020
www.hobartresidence.com
213-637-0308
Rate: varies depending on # of roommates
Location: **5 blocks**

Libra Hotel

3909 W 6th St
Los Angeles CA 90020
(213)272-6618
Rates: \$990/month (single)/\$790 (double)
Distance: **3 blocks**
www.librahotella.com

Arwyn Manor

3835 8th ST
Los Angeles, CA 90005
Distance: **0.4 Miles**
(323) 494-4215
Contact: Vanessa
Rates: Starting at \$700

The Gaylord Apartments

3355 Wilshire Boulevard
Los Angeles, CA. 90039
(213) 389-4161
Rates start at: \$900/month
Distance: **0.6 miles**

Air BnB

Various locations and prices across LA
www.airbnb.com

Versailles Apartments

608 S St. Andrews Pl
LA CA 90005
www.theversaillesapartments.com
Rates:\$895+ studio /1 bed
Distance: **.3 Miles**

Swel Group Apartments

Various locations within 4-7 blocks of the school
www.swelgroup.com
(213) 380-0584
Rates: Starting at \$800

HOTELS

Ramada Los Angeles/Wilshire Center

3900 Wilshire Blvd.
Los Angeles, CA 90010
Distance: **0.1 mile**
(213) 736-5222
www.wyndamhotels.com

Garden Suites

681 S. Western Ave.
Los Angeles, CA 90005
(213) 383-0000
Distance: **200 ft.**

The LINE Los Angeles

3515 Wilshire Blvd
Los Angeles, CA 90010
Distance: **0.5 mile**
(213) 381-7411
www.thelinehotel.com

Westmoreland Casa

1631 S Westmoreland Ave
Los Angeles, CA 90006
Distance: **2.4 miles**
213-292-1767
www.westmoreland.joa24.com/index.html

Essex Manor Studio Apartments

2816 W Sunset Place
Los Angeles, CA 90005
Distance: **3 blocks**
www.essexmanorla.com
(310)276-7356

Oakwood World Wide

3600 Barham Blvd
Los Angeles CA 90068
Other locations available
Distance: **6.8 miles**
(323) 878-2100
Contact: Lila Cross
www.losangeles.oakwood.com

Rates are subject to change based on individual housing management discretion.

SUGGESTED WEBSITES:

www.sublet.com

www.losangeles.craigslist.org

www.westsiderentals.com

www.furnishedapartmentsla.com

www.hostels.com/us.ca.la.html

www.4rentinla.com

www.apartmentlist.com

www.rent.com

www.abodo.com





CINEMAMAKEUP
S C H O O L



SCHOOL CATALOG

JANUARY 1, 2018 - DECEMBER 31, 2018

“As the Director of Education, my mission is to make sure we provide the most up-to-date education, so Cinema Makeup School continues to be the best opportunity for students to learn makeup techniques from industry professionals“

– **Three-time Oscar-winner Ve Neill,**
CMS Director of Education

MISSION STATEMENT

CINEMAMAKEUPSCHOOL is dedicated to educating the next generation of makeup artists for the film, television, fashion and entertainment industries. *We aim to provide students with all of the skills needed to succeed as makeup artists and to give them a solid foundation for any job they seek.* In addition to makeup techniques, CMS students are taught professionalism, ethics, business and history. Graduates of our school have a world of opportunity before them and we strive to help our students reach their maximum potential.



TABLE OF CONTENTS

MISSION STATEMENT	1	Career Opportunities	40
INTRODUCTION	5	Placement Services	41
Who We Are	5	General Conduct	41
Faculty	5	Liability	41
What We Do	5	Student Grievance Procedure	41
COMPREHENSIVE TRACKS	6	ADMINISTRATIVE POLICIES	42
DIPLOMA PROGRAMS	8	Methodology	42
Master Makeup Program	8	Equipment	42
High Fashion Photographic Makeup Program	10	Non-Discrimination Policy	42
Creature Concept Design Program	12	Wheelchair Accessibility	42
CORE CLASSES	14	Language Policy	42
Character Makeup	14	ADMISSIONS POLICIES	42
Prosthetic Makeup	16	Procedures for Admissions	42
Special Makeup Effects	18	Entrance Requirements	42
ADVANCED COURSES	22	Notice Concerning Transferability of Credits and Credentials Earned at Our Institution	42
Advanced Beauty Theory	22	ACADEMIC POLICIES	43
Advanced Lab Techniques	24	Attendance	43
HONORS PROGRAMS	26	Attendance Records and Absences	43
The Leonard Engelman Fellowship	26	Missed Work	43
Protégé Lab Internship Program	27	Leave of Absence	43
Industry Mentorship Program	28	Academic Evaluations	44
CMS Apprenticeship Program	29	Academic Probation	44
WORKSHOPS & SEMINARS	30	Letter Grade and Grade Point System	44
Hollywood Master Workshops	30	Retention of Records	44
Summer SFX Boot Camp I & II	31	Transcripts	44
FX Crash Course	31	SCHEDULE OF CHARGES	44
SPECIAL EVENTS	32	Payment Plan Option	44
Guest Lectures and Demonstrations	32	Student Tuition Recovery Fund	44
Conventions and Trade Shows	34	Students' Right to Cancel	45
Student Competitions	35	Refund Policy	45
CMS IN THE MEDIA	36	INTERNATIONAL STUDENTS	45
CMS AND HOLLYWOOD	37	Student Visa	45
LIFE AT CMS	38	M-1 Visa	45
CMS Campus	38	Transfers and Extensions	45
Living in Los Angeles	38	Enrollment Process	46
Housing	39	Entry to the US	46
Neighborhoods	39	International Student Guidelines	46
STUDENT SERVICES	39	Responsibilities of CMS	46
Academic Counseling	39	Additional Costs	46
Work-Study Internship/Scholarships	39	Student Services	47
Veterans' Benefits	40	School Breaks and Holidays	47
Office Hours	40	Graduation	47
Learning Resources	40	Disclaimer	47
		DISCLOSURE STATEMENTS	47







Who We Are

Cinema Makeup School was founded in 1993 by the Cinema Art College Corporation and has grown to become one of the world's premiere schools for special FX and beauty makeup. Located in the heart of Los Angeles, CA—the entertainment capital of the world—CMS students have unparalleled access to the culture, history, hustle and bustle of the film and television industry.

Cinema Makeup School's top-notch, award-winning instructors utilize the latest and most advanced makeup techniques. More importantly, they have a passion for teaching those skills to the next generation of artists—CMS students—in a hands-on studio environment. Our classes give students maximum time working “in the chair,” allowing them to practice and experiment as they learn.

Faculty

Cinema Makeup School's instructors are all working professionals with at least five years of experience in their disciplines. The school's instructors and administrators have worked on everything from Hollywood blockbusters like *Avatar*, *300*, and *Godzilla*, to editorial spreads in the pages of the world's top fashion magazines. Many have won multiple top awards.

With such a diverse and accomplished faculty, students who complete their courses of study at Cinema Makeup School will enter the makeup industry having already worked closely with many top names in the field.

What We Do

With a Cinema Makeup School education, students gain valuable inside knowledge and the confidence to be successful professional makeup artists, starting with their first jobs. We cover everything from the basics to the cutting edge and beyond. Innovation, creativity and experimentation are all encouraged. At CMS, we believe that every student brings unique ideas and experiences to the art of makeup and we do our best to help them express those ideas.

In CMS's studio-grade classrooms, our students have access to all of the latest tools and techniques, including silicone gel-filled appliance technology and ZBrush Digital Creature Design software. Our instructors teach students every technique in a practical, hands-on environment with plenty of individual attention.

At Cinema Makeup School, we strive to educate the makeup artists of tomorrow—the next generation of creative elites who will change the face of the industry. We pride ourselves on providing the most advanced training and the guidance to make sure our students succeed.





COMPREHENSIVE TRACKS

At Cinema Makeup School, we offer a diverse set of programs and classes that prepare you for a variety of career pursuits. We don't restrict what you can choose to study, and our programs move quickly. Choosing to follow one of our comprehensive tracks is a great way to map out your educational journey to pick up the most relevant knowledge along the way.



COMPLETE TRACK

28 WEEKS


Master Makeup Program + Digital FX + ZBrush + Creature Maquette
Advanced Lab Techniques + Advanced Beauty Theory



FX TRACK

25 WEEKS

Master Makeup Program + Digital FX + ZBrush + Creature Maquette + Advanced Lab Techniques



What is your
makeup dream?

Get on the right track to achieve more.

COURSE DESCRIPTIONS / DIPLOMA PROGRAMS



CMS offers two diploma programs. Each is designed to provide core training geared toward a particular career field within the makeup industry. All programs are regularly updated to assure that they reflect the latest advances and trends in the the makeup industry. A diploma is awarded for successful completion of all program requirements. If students would like training in an additional field or technique, they may choose to combine one of CMS's programs with additional classes either on an individual basis or via a comprehensive track.



Master Makeup Program

The Master Makeup Program is our most extensive and most popular program. Graduates of this 18-Week course will be prepared for nearly any career in the makeup industry. They will learn the skills necessary to excel in the film, television, beauty and special effects fields. This course is constantly updated to reflect the latest advances and techniques in the makeup industry. Students build their portfolios with new work almost daily. Successful, working artists teach Master Makeup students the full spectrum of makeup disciplines. Master Makeup Program incorporates the latest in makeup techniques including airbrush training, hairstyling, gelatin, silicone gel-filled and foam latex appliances, sculpting, blood tubing and bladder effects, multi-piece creature effects, teeth and much more.

SOC JOB CODES:

27-1013, 27-1019, 39-5091, 41-9011

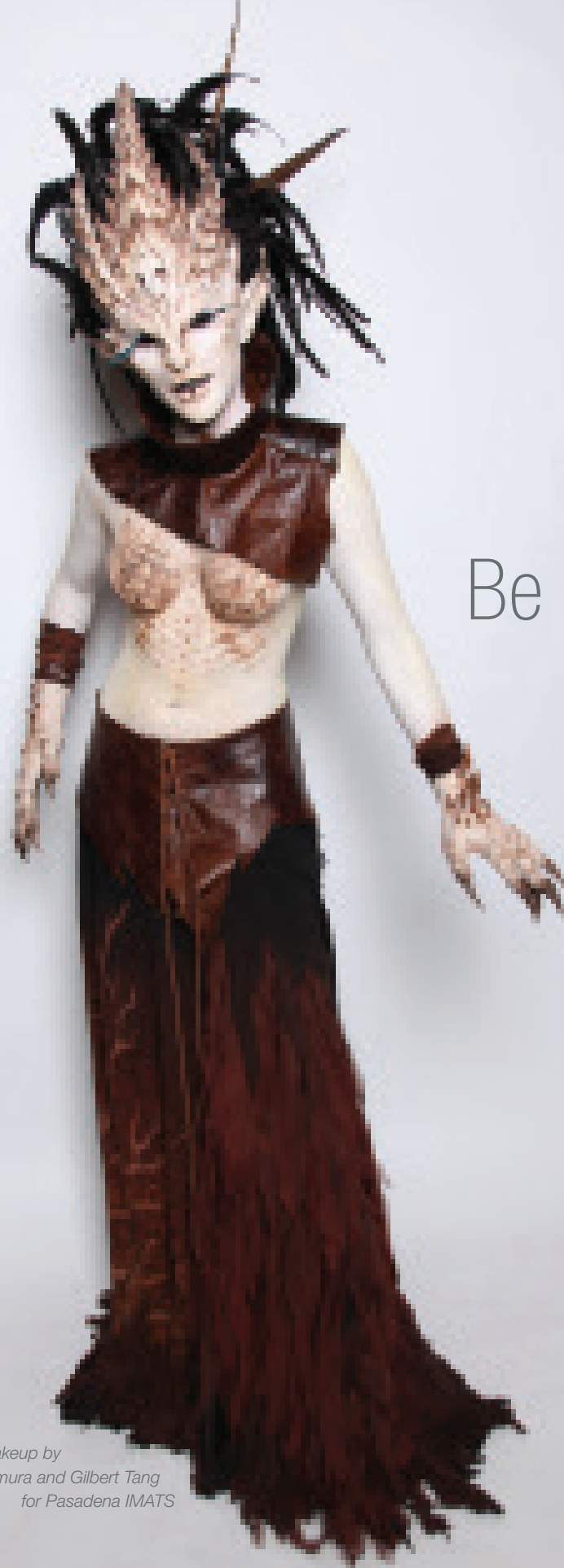
CLASSES INCLUDED

Beauty Makeup
Airbrush Makeup
Photographic Hairstyling
Character Makeup
Prosthetics
Special Makeup Effects

PROGRAM DURATION

630 Clock Hours

18 Weeks, Mon-Fri: 9:00am – 4:00pm or
36 Weeks, Mon-Fri: 6:30pm – 10:00pm



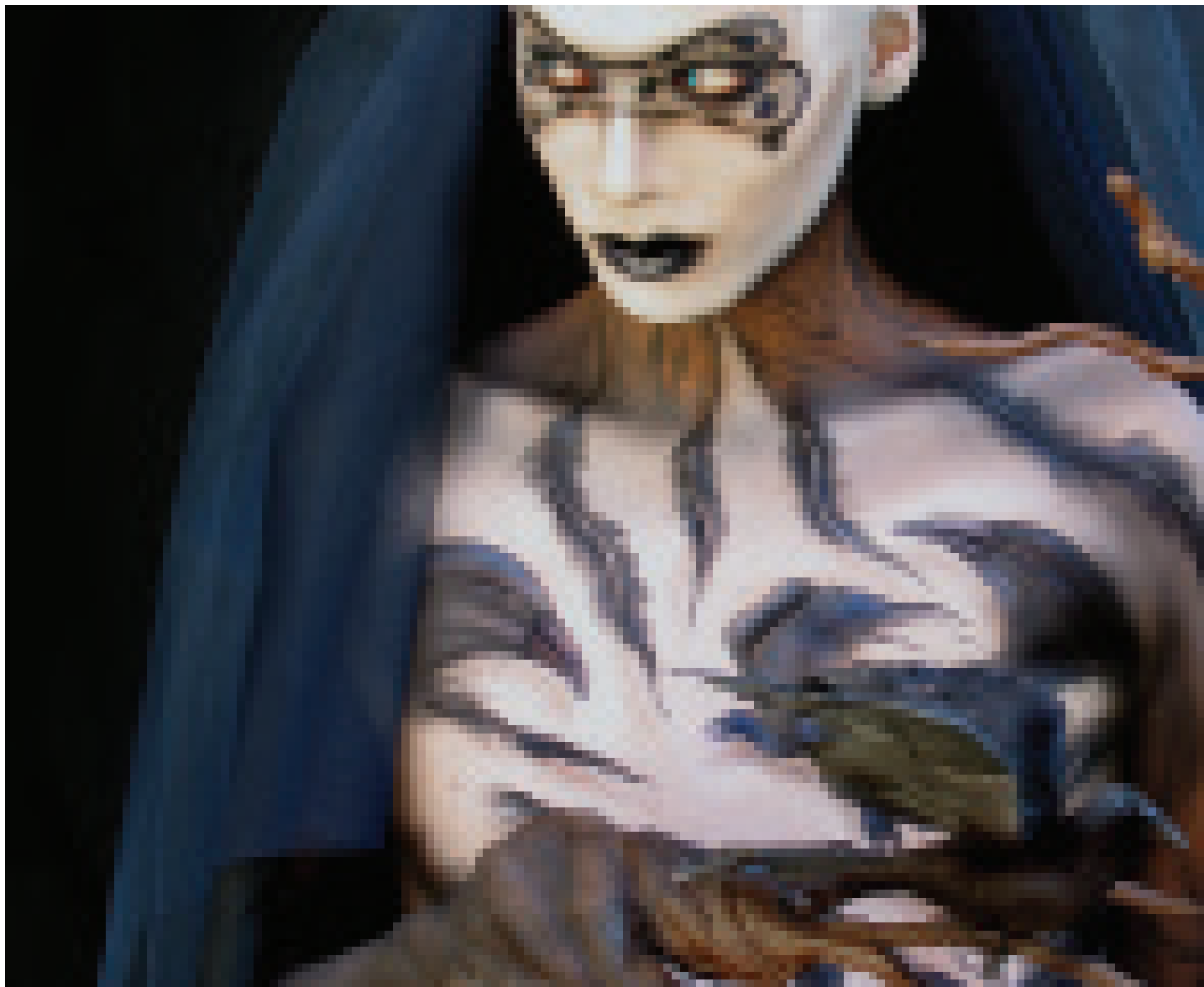
Be strange.

*Makeup by
Miyo Nakamura and Gilbert Tang
for Pasadena IMATS*

COURSE DESCRIPTIONS / DIPLOMA PROGRAMS



PAGE
010



High Fashion Photographic Makeup Program

The High Fashion Photographic Makeup Program covers all of the skills needed to work in the fashion industry as a makeup artist and stylist. It covers techniques used in magazines, fashion shows, video shoots and private client services. Combining basic principles and theories of makeup artistry with those of lighting and color coordination, students will learn to apply corrective, beauty and glamour makeup. Students will also learn how to create and maintain basic hairstyles and how to work with an airbrush for beauty makeup and bodypainting.

SOC JOB CODES:

27-1013, 27-1019, 39-5091, 41-9011



CLASSES INCLUDED

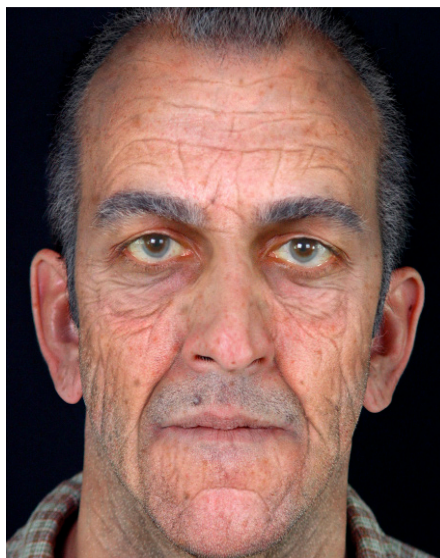
Beauty Makeup
Airbrush Makeup
Photographic Hairstyling

PROGRAM DURATION

210 Clock Hours

6 Weeks, Mon-Fri: 9:00am – 4:00pm or
12 Weeks, Mon-Fri: 6:30pm-10:00pm

COURSE DESCRIPTIONS / DIPLOMA PROGRAMS



Creature Concept Design Program

The Creature Concept Design Program prepares students for careers in the toy, video game, film, and television industries, in the fields of character development and creation. Students will learn how to use digital media to create makeup and character designs through various design software and digital pen tablets - including 3D modeling software - to create realistic digital models that can be used as concept art or finished projects. Students will also learn how to create and sculpt clay maquettes for character design, all while learning from Hollywood's creature creation masters.

SOC JOB CODES:

27-1013, 27-1014, 27-1019,
27-1024, 39-5091, 41-9011



CLASSES INCLUDED

Digital FX Makeup Design
ZBrush Digital Creature Creation
Creature Maquette Sculpture

PROGRAM DURATION

120 Clock Hours

3 Weeks, Mon-Fri: 9:00am – 5:00pm or

6 Weeks, Mon-Fri: 6:00pm – 10:00pm



COURSE DESCRIPTIONS / CORE CLASSES



PAGE
014



Character Makeup

This 4-week class is comprised of techniques for injury simulation, facial hair application, bald caps and old-age makeup. It covers everything needed to create realistic simulated effects and characters. Students will learn both two-dimensional (using only makeup) and three-dimensional (using gelatin and silicone) character techniques.

TOPICS INCLUDE

Injury Simulation

Burns, cuts, scratches, bruises, etc.

Tattoos

Needle tracks, junkie look, dead look

3-dimensional work with gelatin and latex

Facial Hair

Creating a natural hair line

Goatees, beards, sideburns, eyebrows

Stubble

Color mixing

Cleaning, upkeep and styling of hair pieces

Bald Caps

Application materials and techniques

Vinyl plastic and latex caps, creating your own latex cap.

Introduction to PAX paints

Patching and repair

Old-Age Makeup

Use of old age makeup in film, TV and stage

Stretch and stipple

Liquid rubber

Wrinkle application

Hair graying

Applying age marks

CLASS DURATION

140 Clock Hours

Class: 4 Week

Evening Class: 8 Weeks

SOC JOB CODES:

27-1013, 27-1019, 39-5091, 41-9011

Make *something* of yourself.



Makeup by Tara Lang
for Syfy's FaceOff

COURSE DESCRIPTIONS / CORE CLASSES



Prosthetic Makeup

This 4-week class is designed to teach students the process of realistic prosthetic makeup application from start to finish, which is considered an essential skill for makeup artists in the field of film and television. Students will have the opportunity to learn in a working lab using the techniques and materials popular in film and television today.

TOPICS INCLUDE

Translucent Appliances and

Differences between translucent and opaque appliances
Edgework and coloration
Use of silicone gel-filled appliances
Gelatin and Pros-aide transfer appliances

Lifecasting

Creating lifecasts

Sculpting and Moldmaking

Creating a realistic surface
Allowing for movement and expression
Various techniques and materials for sculpture
Molding, cutting edge, flashing

Foam Latex

Mixing and pouring
Baking, opening
and prepping for paint.

Application

Edge work & color
Proper placement
Removal techniques

CLASS DURATION

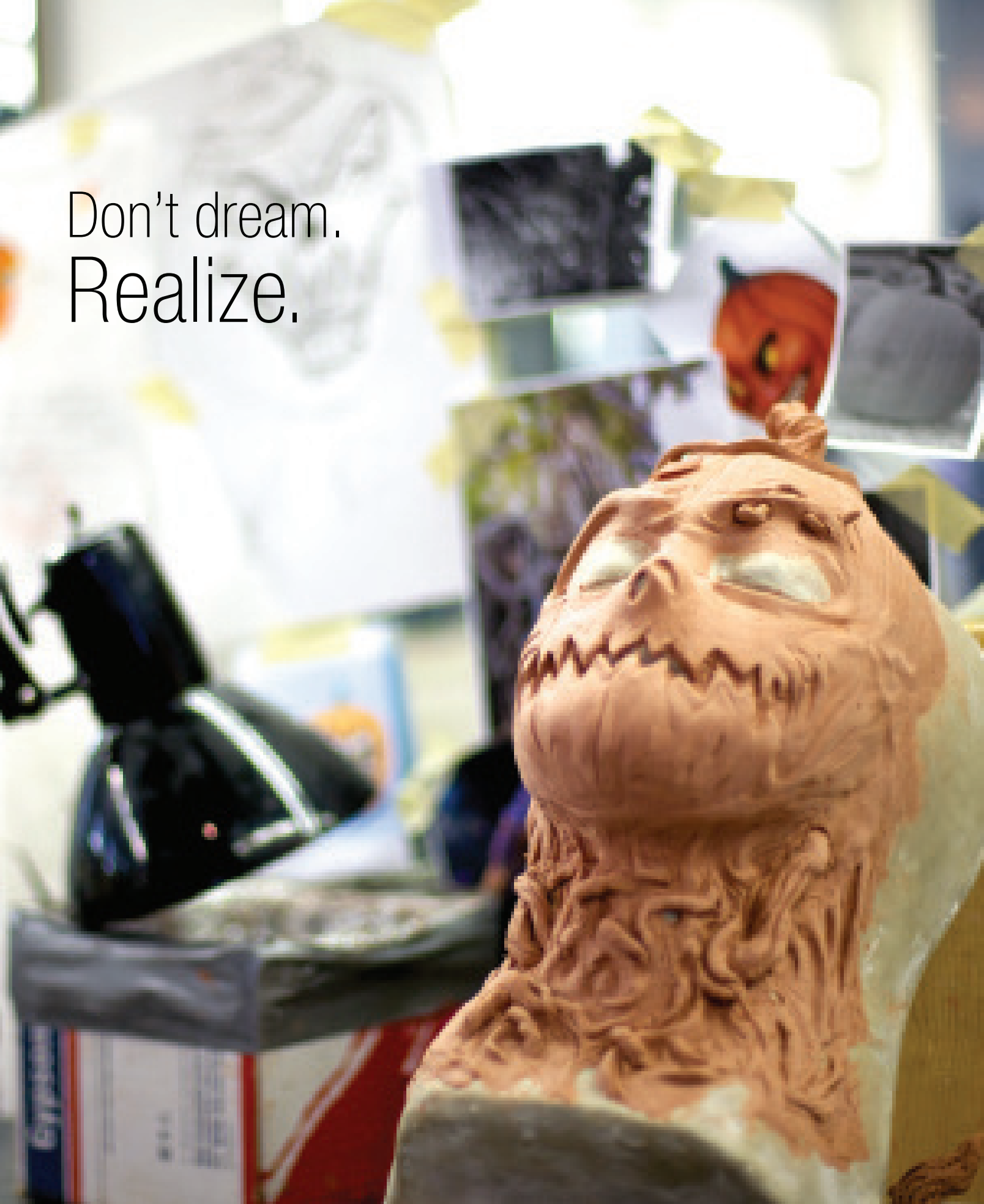
140 Clock Hours

Class: 4 Weeks
Evening Class: 8 Weeks

SOC JOB CODES:

27-1013, 27-1019, 39-5091, 41-9011

Don't dream.
Realize.



COURSE DESCRIPTIONS / CORE CLASSES



PAGE
018



Special Makeup Effects

This 4-week class teaches the creation and application of multi-piece prosthetics, blood tubing, lifecasting, teeth and airbrush techniques. All students will have the opportunity to design and build a full face and neck appliance complete with a set of teeth. Students will create multi-piece molds and learn about advanced special effects lab techniques, materials and processes. This class is a must for those who want to have a career in creature and special fx makeup.

TOPICS INCLUDE

Correction and Sculpting

Introduction to sculpting tools and techniques
Correction of existing lifecast
Use of oil-based clay

Designing an Appliance

Working from reference materials
Appliance layering
Breaking down designs into molds
Creating snap molds

Dental Appliances

Finishing Techniques

Trimming, seaming and patching
Pre-treating appliances
Airbrush painting techniques
Prepping models for application
Removal techniques

Bloodwork, Bladders and Bidding

Blood tubing and spray demonstration and lecture
Bladder fx for air and liquid demonstration and lecture
Bidding on a special makeup fx project lecture

CLASS DURATION

140 Clock Hours

Class: 4 Week
Evening Class: 8 Weeks

SOC JOB CODES:

27-1013, 27-1019, 39-5091, 41-9011

Maybe it's our winning smiles...



Makeup by
Tara Lang

CMS student and graduate work,
*like this entry for **XBOX 360 Monster Makeover** competition by Tara Lang,*
takes home top honors at competitions
all over the world.

COURSE DESCRIPTIONS / CORE CLASSES



“Cinema Makeup School’s diverse student body helps cultivate a unique experience where students can learn from each other by sharing their knowledge and backgrounds.”

– Wen Zheng, CMS graduate from Beijing, China





*Makeup by CMS graduate
Wen Zheng for, award
winning Youtuber,
Tyler Oakley*

COURSE DESCRIPTIONS / ADVANCED COURSES



PAGE
022



Advanced Beauty Theory

This special three-week class is designed for experienced beauty makeup artists who want to elevate their crafts. Makeups are assessed in intense detail. Students are given extra freedom to push the boundaries of beauty makeup and create their own editorial concepts for a series of professional photo shoot projects.

TOPICS INCLUDE

Advanced Airbrush
Photo Lighting
Specialty Makeup

White-on-white *Ethnic*
Drag *Runway*

CLASS DURATION

120 Clock Hours
Class: 3 Weeks

SOC JOB CODES:

27-1013, 27-1019,
39-5091, 41-9011

Push the boundaries
of beauty



COURSE DESCRIPTIONS / ADVANCED COURSES



PAGE
024



Advanced Lab Techniques

In this four-week class, students with prior prosthetic makeup experience venture to the real working floor of a Hollywood creature effects shop to learn cutting-edge lab techniques for moldmaking, sculpting, painting and more while creating a photorealistic severed version of their own heads. This unparalleled experience familiarizes students with the technical demands of working in the makeup effects world through a completely immersive learning environment.

Plus, at the end of the class, the head is yours to keep!

TOPICS INCLUDE

Full-head silicone lifecasting
Clay pours
Sculpting and detailing
Fiberglass, syntactic and 1630 molds
Direct mold transfers

Silicone skin casting
Seaming and patching silicone
Soft polyfoam backing
Silicone painting

CLASS DURATION

120 Clock Hours,
40 Hours Independent Study
Class: 4 Weeks

SOC JOB CODES:

27-1013, 27-1019, 39-5091, 41-9011

Get a head

with Advanced Lab techniques at
Cinema Makeup School.



*Silicone severed head created by Alanna Suen
as classwork in Advanced Lab Techniques*

COURSE DESCRIPTIONS / HONORS PROGRAMS



PAGE
026

For the extraordinarily driven and talented, CMS offers a variety of selective, merit-based honors programs which allow students to take their studies beyond the scope of normal coursework.



The Leonard Engelman Fellowship

Named after Leonard Engelman, CMS Director Emeritus and current Vice President of the Academy of Motion Picture Arts and Sciences, The Leonard Engelman Fellowship offers a select group of high-achieving students the opportunity to study directly with Leonard Engelman himself in an intimate, workshop setting. Students who attend Fellowship workshops benefit from Leonard's vast industry knowledge and unparalleled makeup experience.



The Protégé Lab Internship Program

For select students who excel in both prosthetics and special effects, Cinema Makeup School offers a one-of-a-kind opportunity: the chance to work inside a working special effects lab. Past lab partnerships include Amalgamated Dynamics, Spectral Motion, Millenium FX, and KNB EFX Group, and have contributed to projects like feature film *Harbinger Down* and hit television show *The Walking Dead*.

COURSE DESCRIPTIONS / HONORS PROGRAMS



Industry Mentorship Program

One of the most prestigious opportunities CMS offers its graduates is the chance to work closely with some of Hollywood's top tier industry artist. Through the Industry Mentorship Program, CMS' most talented graduates are selected to work in a 3 month long paid mentorship program alongside distinguished industry professionals such as Ve Neill, Bill Corso and Howard Burger, learning the ins and outs of the makeup industry through hands on experiences and mentorship.

The Industry Mentorship Program not only allows CMS graduates the opportunity to gain invaluable industry experience, but offers a once-in-a-lifetime opportunity for new artist to gain insight from the most seasoned makeup industry professionals.



Legends of Creature Design Scholarship, Madison Burger



Ve Neill apprentice Wen Zheng



CMS Apprenticeship Program

Students and Graduates of CMS are strongly encouraged to enter their work into the CMS Apprenticeship Competition. Students who participate in the Apprenticeship Competition conceptualize a creative and unique design that can be brought to life in full effect. The student with the most innovative and distinct design is selected to work with CMS and an industry professional who will help the student bring their work to life. Once the design is completed, the student's work will be displayed at major conventions, such as San Deigo Comic-Con.

COURSE DESCRIPTIONS / WORKSHOPS & SEMINARS



To help spread appreciation for makeup arts, CMS offers a wide range of workshops and seminars designed for students who are looking for alternative ways to study makeup. From young amateurs trying makeup for the first time or seasoned pros looking to study with Hollywood masters, CMS workshops offer valuable learning experiences for everyone!



Hollywood Master Workshops

These special weekend workshops bring you face-to-face with some of the top award-winning artists in Hollywood for intensive makeup training. Each workshop is customized to showcase and pass on the exact techniques and approaches which made its instructor famous. Combined, our current master instructors have 10 Oscar® nominations, 6 wins, 6 BAFTA awards, 7 Emmy® wins and billions of dollars in box office grosses.

Master Workshop space is limited and seats are filled on a first come, first served basis by date of initial deposit. Deposits can be submitted online at cinemamakeup.com

INSTRUCTORS INCLUDE

Ve Neill
Howard Berger
Cheri Montesanto
Eryn Krueger Mekash
and more...

Joel Harlow
Mike Elizalde
Neill Gorton

WORKSHOP DURATION

16 Clock Hours
Class: 2 Days



Summer SFX Boot Camp I & II

These one-week summer camps are open to students aged 14–19 who are looking for an introduction to the world of movie makeup. Each program includes four days of hands on instruction and a field trip. The second camp builds on knowledge from the first. The two camps can be taken during the same summer or over two years.

TOPICS INCLUDE

Injury Makeup
Prosthetic Application
Zombie Makeup

CLASS DURATION

35 Clock Hours
Class: 1 Week

FX Crash Course

The FX makeup industry has exploded in popularity in recent years and requires a specialized approach to makeup. Learn the ins and outs of horror FX makeup to produce faster, better, and more convincing scares.

TOPICS INCLUDE

Prosthetic Application
Airbrush Techniques
Out-of-kit Injury Makeup

CLASS DURATION

35 Clock Hours
Class: 1 Week

COURSE DESCRIPTIONS / SPECIAL EVENTS

CMS
CINEMA MAKEUP SCHOOL

JOEL HARLOW
LIVE MAKEUP

Le Neill
A Makeup Demonstration
Featuring Miranda Jorg and Miago Nakamura
Q&A and Reception to follow
at CINEMA MAKEUP SCHOOL

Greg Cannon
a signature seminar

CINEMA MAKEUP SCHOOL
The Willem Theater Building
SUNDAY 7.19.2009 / 1p

Guest Lectures & Demonstrations

As one of the world's foremost makeup training institutions, Cinema Makeup School is often able to attract some of the biggest names in the makeup and effects industries for special guest lectures, classes and demonstrations. Thanks to the school's prestige and convenient location in Los Angeles, CMS has hosted everyone from cult film makeup icons and performers to Emmy- and Oscar-winning makeup artists at the top of the profession.



PAST GUESTS INCLUDE

Howard Berger
 Greg Cannom
 Bill Corso
 Tommy Cole
 Leonard Engelman

John Goodwin
 Kevin Haney
 Joel Harlow
 Steve Johnson
 Doug Jones

Brad Look
 Ve Neill
 Douglas Noe
 Craig Reardon
 Jordu Schell

Miles Teves
 Christien Tinsley
 Kazuhiro Tsuji
 Steve Wang

COURSE DESCRIPTIONS / SPECIAL EVENTS



Conventions & Trade Shows

To keep the school relevant and in touch with both the makeup industry and the larger entertainment industry, Cinema Makeup School regularly funds student, graduate, and instructor demonstrations at major conventions and trade shows around the world. These range from makeup shows such as the International Makeup Artist Trade Shows (IMATS) in Los Angeles and London, to genre conventions like Monsterpalooza in Burbank, to major international events like Comic-Con in San Diego. These appearances give select students and graduates the chance to have their work publicly shown in front of a large and discerning audience.



Student Competitions

Many students also choose to enter their work in makeup competitions, such as IMATS "Battle of the Brushes." CMS has a proud track record of excellence in these competitions. Our artists regularly place in and often win contests in both beauty makeup and special effects.

CMS IN THE MEDIA



GLOBAL PRAISE FOR CMS

"The most prestigious [makeup] school in Hollywood."

– **Alarma TV (Mexico)**

"...Where magic comes to life. You can feel the energy as you take your first step inside one of the world's best makeup schools"

– **EBS World Education, EBS (Korea)**

"One of the most famous makeup schools in Hollywood."

– **50MN Inside, TF1 (France)**

"A place renowned for turning anyone into literally anything."

– **The Hoyts Insider (Australia)**

"One of the most renowned schools in Los Angeles in the field of special effects... the makeup artists here are the best of the best."

– **Steven liebt Kino (Germany)**

MEDIA APPEARANCES

SYFY "Face Off"

NERDIST "Blood & Guts with Scott Ian"

TRAVEL CHANNEL "Trip Flip"

CNBC "Treasure Detectives"

Syndication "The Doctors"

TF1 "50MN Inside"

FOOD NETWORK "Will Work for Food"

REELZ TV "Dailies"

UNIVISION "Control"

XBOX Live "Monster Makers"

HISTORY CHANNEL "U.F.O. Hunters"

ANIMAL PLANET "The Most Extreme"

TRADE PUBLICATIONS

Make-up Artist magazine

The Artisan magazine

Fangoria magazine

Below-the-Line News

Behind The Marquee



CMS AND HOLLYWOOD

Located in line-of-sight of the world-famous Hollywood sign and just blocks from major motion picture studios, Cinema Makeup School is nestled close to the heart of the American film industry. The school's location and unparalleled industry connections allow students and graduates to regularly interact and work with top Hollywood artists.



PROFESSIONAL TESTIMONIALS

"With Cinema Makeup School, so many of the teachers I've worked with: Mike Spatola, of course Leonard Engelman... Some schools will hire students that graduated, but they only know that curriculum. You need to have people that have a wealth of information...that come in and teach classes, and I think that's essential. It seems like your students are listening to what these veterans are saying and I think that's the most important thing."

– **Howard Berger** Oscar-winning SFX artist; Founder, KNB Effects Group

"Amazing graduates."

– **Kazuhiro Tsuji** two-time Oscar-nominated SFX artist;
Looper, The Curious Case of Benjamin Button, Tropic Thunder

"With the advancement in technology in the field of makeup, there is nothing more important than a good education. It is my honor to follow in Dick Smith's footsteps as your sponsor for the Cinema Makeup School Scholarship."

– **Ve Neill** Three-time Oscar-winning makeup artist;
The Hunger Games: Catching Fire, Ed Wood, Edward Scissorhands, Beetlejuice

"The school was overflowing with students, graduates, demonstrators and guests, and you could feel the excitement of new makeup artists wanting to learn."

– **Michael Westmore** Oscar-winning and nine-time Emmy-winning makeup artist;
Star Trek: The Next Generation, Deep Space Nine, Voyager, Enterprise, Mask

"CMS is like my second home!"

– **Joel Harlow** Oscar-winning and two-time Emmy-winning makeup artist;
Transcendence, The Lone Ranger, Pirates of the Caribbean: Dead Man's Chest, Star Trek



LIFE AT CMS

CMS CAMPUS

The Cinema Makeup School (CMS) campus is located in the epicenter of the entertainment world: Los Angeles, California. The office and classrooms are located at 3780 Wilshire Boulevard in the historic art deco Wilshire Theater Building. We are directly across the street from the Wilshire/Western Metro subway station and are located in close proximity to many bus routes.

Our facility has over 10,000 sq. ft. of space including classrooms, administrative offices, a reception area, computer lab, library and student lounge area. Our ultra-modern, fully air-conditioned classrooms and laboratories are spacious, custom lit and mirrored environments specially designed to enable students to work at maximum efficiency. The computer lab and library provide individual workstations available for student use, while the lounge area provides a space for students to relax and socialize during class breaks.

CMS also has its own makeup store located in the Wilshire building, which sells materials to students and graduates. The store is a great resource for students and alumni, allowing them to purchase materials without ever having to leave the CMS facility.

The Wilshire building has on-site security that monitors all persons entering and leaving the facility. All of our facilities are wheelchair accessible. Ample student parking (including handicapped-accessible) is available across from the main building.

The facility and all school equipment fully comply with, and in most cases exceed, federal, state and local ordinances and regulations, including requirements for fire safety, building safety, handicapped access and health.

LIVING IN LOS ANGELES

Home to just under 4 million people, and with nearly 13 million in the surrounding metro area, Los Angeles is the second largest city in US. It is home to people from all over the world, with nearly every culture and language represented. LA is best known as the home of Hollywood and the heart of the motion picture



industry. Billed as “The Creative Capital of the World”, Los Angeles is home to the greatest concentration of artists, actors, dancers, filmmakers, etc. in the world. 1 in 6 LA residents work in some sort of creative industry and the performing arts play a huge role in the identity of the city.

The diversity of Los Angeles makes it a must-see city for anyone interested in culture and history. There is a wealth of incredible places to eat, shop and explore throughout the city and each neighborhood has its own unique identity and characteristics. Between museums, theatres, shopping centers, restaurants and outdoor activities, there is no shortage of entertainment in LA.

Los Angeles is known for having one of the sunniest climates in the US, with only 35 days of precipitation on average each year. The annual temperature averages 66°F (19°C). The coldest month is January, where temperatures average as low as 45°F (7°C) at night, while the hottest month is August, with daytime temperatures averaging up to 90°F (32°C) during the day.

Los Angeles is known as a driving city, criss-crossed by an extensive network of freeways and major highways. It is possible to live in LA without a car, though, as it is home to a large system of bus lines and subway trains, many of which run 24 hours a day. The city is also home to Los Angeles International Airport, the third busiest airport in the US, and the Port of Los Angeles, which is the busiest commercial port in the US and the largest cruise ship center on the West Coast.

HOUSING

Moving to a new city can be a difficult process, and in a city as large as Los Angeles it can be even more challenging. CMS has no dormitories and is not able to offer housing through the school, however, we do what we can to assist in this transition as much as possible.

CMS maintains a list of suggested websites, residences and other resources designed to assist in housing selection on the “Housing” section of our website. There is a plethora of housing options in the neighborhoods surrounding the CMS facility, ranging from \$750 - \$2,000 per month, depending on the amenities students desire.

Ultimately students are responsible for housing arrangements, and CMS has no responsibility to find or assist a student in finding hous-

ing.

Disclaimer: The information found on the “Housing” section of the CMS website is provided for information only. None of the residences or businesses is associated with CMS in any way. CMS will not be held responsible for false or misleading advertisements, business closure or disagreements between the leasee and the leasing company. CMS is not responsible for evaluating the safety or quality of any listings on our website. Students should read through any agreements or leases thoroughly before signing and, whenever possible, view the residence in person before paying any money to a rental company or individual owner/subletter.

NEIGHBORHOODS

CMS is located in the Mid-Wilshire neighborhood of Los Angeles. When looking for housing, students may wish to concentrate on this area. CMS is also located directly across from the Wilshire/Western purple line Metro station. Students unable to find housing within walking distance of CMS may wish to consider residences along the Metro line. There are also a number of bus stops within one block of the CMS facility that can take students to different areas of the city. For more information on public transportation, students should consult the Los Angeles Metropolitan Transit Authority (LA Metro) website.

STUDENT SERVICES

ACADEMIC COUNSELING

Students are advised on both personal and academic issues and are encouraged to discuss their scholastic and vocational goals. The faculty, Directors, Chief Operating Officer, and Registrar have a sincere interest in the personal welfare of each student, and an open-door policy is the norm.

CMS academic counseling services are designed to aid each student while selecting classes and ensure that each student is provided proper guidance while finishing his or her diploma or certificate courses.

WORK STUDY INTERNSHIP / SCHOLARSHIP

Periodically, CMS will offer students the opportunity to participate in a work study internship in order to pay their tuition. Under this program, the student pays all material, registration and lab fees, but is able to work off their tuition through internship hours. Internship hours may vary and are scheduled on an as-needed basis. This program is not available at all times; to inquire about work study, students should contact the CMS offices.

CMS also provides a variety of scholarship opportunities. Scholarship funds awarded to a prospective student are **(continued on next page)**

STUDENT ACTIVITIES AND SERVICES



eligible to be used for CMS tuition only, and will expire one year from the date they were awarded. There is no cash value for any scholarship award, and funds cannot be used retroactively.

For students interested in learning more about our scholarships or submitting an application, please visit the "Scholarship" section of our website.

VETERANS' BENEFITS

CMS is approved by the California State Approving Agency of Veterans Education for the training of veterans and eligible persons under the provisions of Title 38 U.S. Code. This approval is for our Diploma Programs, and applies only to the Master Makeup Program and High Fashion Photographic Makeup Program. For more information please contact the CMS offices.

OFFICE HOURS

Administrative office hours are 8:30am to 5:30pm, Monday through Friday. The office is closed on weekends and holidays. Day classes are scheduled from 9:00am to 4:00pm, with select courses held from 9:00am to 5:00pm. Occasionally classes will run from 9:00am to 5:30pm to make up for holiday breaks. CMS observes most major holidays

and closes for a winter break between Christmas and New Year's Day. A complete list of school holidays and breaks is included on our yearly schedule of class start dates.

LEARNING RESOURCES

CMS has established a library and resource center consisting of textbooks and periodicals providing information in the various makeup disciplines offered by the institution. Students are welcome to check out these materials at any point during their time at CMS. The library is open during regular office hours and materials can be checked out for one-week periods.

CAREER OPPORTUNITIES

The career of a makeup artist is challenging and competitive, but also exciting and rewarding. Seasoned makeup artists are magicians with a brush and palette, who can turn the ordinary in the exotic and transform beauties into monsters. They are limited only by their imaginations and are encouraged to try new, daring creations on a regular basis.

Courses at CMS provide students with the knowledge and confidence needed to succeed as a professional makeup artist. Our curriculum is constantly updated to emphasize skills and techniques that are in-demand in today's marketplace. We keep up with the

latest advances in makeup technology and techniques and are always on the cutting edge of industry trends. Our goal is to prepare students for immediate employment upon graduation.

Professional makeup artistry is an extremely diverse field. It encompasses work ranging from fashion, editorial and advertising to film, television and music videos and everything in between. Our students can train in beauty makeup, film and television work, photographic makeup, special makeup effects and the design and application of prosthetics. Professional makeup artists are expected to be skilled illusionists that can turn any fantasy into a reality for public viewing. They play an integral role in creating characters for film, television and theatre and are an important asset on any production.

With skills learned at CMS and an abundance of imagination, many of our graduates have become well-recognized and award-winning artists in film, television, theatre and fashion. With hard work, passion and the right training, there is no limit to what you can achieve as a makeup artist. The creative possibilities are endless!



PLACEMENT SERVICES

CMS does not guarantee job placement for graduates, but we try to help our students with the job-hunting process as much as possible. CMS maintains an industry job board, which is constantly updated with a wide range of opportunities in beauty, fashion and special makeup effects. In addition to posting these jobs on campus, CMS staff also sends out a daily "jobs e-mail" detailing the latest opportunities available to our students and graduates

CMS' expertise in training makeup artists is well-known in the makeup world and broader entertainment industry. We are approached daily by designers, production teams and filmmakers looking to hire CMS graduates. In addition to these offers, our staff compiles listings from various industry job boards and online services so that students and graduates can view them all in one place.

CMS also offers occasional opportunities for our graduates to showcase their talents at international competitions, special seminars and media appearances as representatives of the school. These events can provide international exposure to our alumni and serve as an excellent networking experience for future job opportunities.

The graduate services staff also assists students and graduates in resume preparation, interviewing techniques and portfolio review. In addition to the graduate services available to students, career-planning concepts are also integrated into the curriculum in all programs.

GENERAL CONDUCT

Students are expected to comply with all school policies regarding curriculum, testing, absences, tardiness and missed work while displaying courtesy and consideration towards instructors, staff and other students. CMS defines improper conduct as the following: fighting on campus; destruction, abuse or theft of property; the use or sale of alcohol or illegal drugs on campus; sexual misconduct; and disregard for school policy. Improper conduct is cause for suspension or expulsion.

The school reserves the right to postpone training in the event of Acts of God, labor disputes, equipment failure, etc. Students will be duly notified and compensated, if appropriate. All course schedules are subject to change in terms of start and completion date. Students will be notified and offered the opportunity to consent as provided by law. In cases where such change would cause undue hardship, a refund will be offered. The maximum postponement of a class start date is 90 days. The school reserves the right to withdraw a scheduled course if the registration is insufficient to warrant holding the class. In such a case, all monies paid will be refunded.

LIABILITY

CMS assumes no responsibility for loss or damage to personal property, or for personal injury, which may occur while on the campus grounds or on a field trip. Any medical costs incurred as a result of injury on CMS campus or during CMS courses will be the full responsibility of the student. CMS encourages all students to have the proper insurance before arriving at the school.

STUDENT GRIEVANCE PROCEDURE

From time to time, differences in interpretation of school policies will arise among students, faculty, and/or the administration. Persons seeking to resolve problems or complaints should first contact the instructor in charge. Requests for further action may be made to the School Director. When such differences arise, usually a miscommunication or misunderstanding is a major contributing factor. For this reason, we urge both students and staff to communicate any problems that arise directly to the individual(s) involved. If the problem cannot be resolved in this manner, the School Director should be contacted. Normally, the informal procedure of "discussing" differences will resolve the problem. In addition to complaints previously stated and appeals of an academic nature, a student has a right to complain to the institution. If a student wishes to file a written complaint, they may do so. All written complaints will be resolved within 10 days and will be sent to the student in writing, as well as filed within the student's record. If a complaint cannot be resolved after exhausting the institution's grievance procedure, the student may file a complaint with the Bureau of Private Postsecondary Education. The student may contact the Bureau for further details. Unresolved complaints may be directed to:

Bureau for Private Postsecondary Education
2535 Capitol Oaks Drive, Suite 400
Sacramento California, 95833
www.bppe.ca.gov
Tel (916) 431-6959, (888) 370-7589
Fax (916) 574-8648
E-mail: bppe@dca.ca.gov



Photography

Cinema Makeup School maintains a simple photography studio on its premises for the purpose of recording student work. CMS encourages students to take photographs as well, and students should not solely rely on CMS to catalog their work

Student photos are available as digital files during a student's attendance and may be downloaded or copied for promotional and personal use. CMS does not archive student photos indefinitely. For help downloading student photos, please contact the CMS offices.

POLICIES



ADMINISTRATIVE POLICIES

METHODOLOGY

Our courses are designed to provide students with the skills, knowledge and confidence to succeed as professional makeup artists. All CMS courses stress a hands-on approach to learning. Emphasis is placed on observation of demonstrations and application of techniques in practical workshop sessions. Students are trained in specialized skills applicable to fields such as television, motion picture, theatre, fashion photography, special makeup effects, lab techniques and fabrication of prosthetics.

CMS does not use models for class lessons; students practice their designs on each other. This gives CMS students the unique experience of understanding how models and actors feel in the makeup chair. Having knowledge of both sides of the makeup process makes CMS students better able to respond to client complaints and concerns, know what particular materials feel like on their skin and understand the concerns of actors and models regarding whether makeup applications will hinder performance in any way.

CMS offers students the chance to document their progress in class through the use of our on-site photographic studio. At the end of each day, students have the opportunity to bring their classmates/models to the photo area to document their designs. They also have access to the CMS costume closet where they can find clothing and accessories to enhance their creations. Digital copies of student photos are archived on an online portal where students can access and download their photos.

EQUIPMENT

In addition to makeup, our coursework utilizes various types of specialized equipment. In Character Makeup, for example, students learn bald cap and facial hair techniques which require steamers, crimpers, hackles, tuffy heads and red heads. Students taking lab classes will use blenders, ovens, hammers, waxers, heat lamps, vacuum chambers, drills, heat guns and glue guns. Our Photographic Hairstyling class uses curling irons, flat irons, hairdryers, and mannequin heads. Students in Airbrush Makeup learn to use airbrushes and compressors.

For a full list of all additional equipment, please contact the CMS offices.

NON-DISCRIMINATION POLICY

Cinema Makeup School is non-sectarian and does not discriminate with regard to race, creed, color, national origin, age, sex, disability, orientation or marital status in any of its academic program activities, employment practices, or admissions policies. This policy applies to hiring of all positions and admission of all students into all programs. Students with special needs such as physical or mental handicaps or learning disabilities are considered for admission provided they meet the entrance requirements. The client, including those with special needs, is responsible for determining if they can benefit from the training.

WHEELCHAIR ACCESSIBLE

Each campus is wheel chair accessible. Students with special needs are advised to meet with the Director to assess their personal needs as well as to determine if the training courses offered and the occupations they lead to are suitable for the prospective student's individual situation.

LANGUAGE POLICY

At CMS, instruction in each classrooms is given only in English. As a visual arts institution, we do not require our students to be proficient in the English language or provide any documentation of proficiency. Minimal English language proficiency is sufficient for enrollment. English language services, including instruction such as ESL, are not provided.

ADMISSIONS POLICIES

PROCEDURES FOR ADMISSIONS

Potential applicants are encouraged to visit CMS in order to meet with one of our admissions representatives. The representative will give the applicant a tour of the campus, provide detailed information about the institution's programs and policies, discuss the applicant's qualifications, and assist them in determining the best way to meet their career objectives. The representative will also discuss tuition and possible financing. If an applicant cannot visit CMS in person, they can take a virtual tour of the campus via Skype/FaceTime/etc. or contact the school by phone to have all of their questions answered.

All applicants to CMS must fill out an enrollment application and submit a \$100 non-refundable registration fee. Once an applicant has been accepted, they will be contacted by CMS to arrange a start date, tuition payment and the purchase of materials, if desired. CMS is a postsecondary education institute. Admission to CMS requires a high school diploma or General Edu-

cation Development Test (GED). Additional transcripts may be requested in some cases.

ENTRANCE REQUIREMENTS

CMS diploma programs do not require previous experience, however some specific classes may have prerequisites. Students interested in taking individual classes should check with CMS regarding the requirements prior to filling out an enrollment application. A background in cosmetology, art, theatre and related fields is helpful but not essential. We recommend that U.S. students complete the enrollment process at least two (2) weeks prior to commencement of the desired course's start date. International student enrollment policies vary slightly from those of US students and are covered in the "International Students" section of this catalog (page 45).

NOTICE CONCERNING TRANSFERABILITY OF CREDITS AND CREDENTIALS EARNED AT OUR INSTITUTION

The transferability of credits you earn at Cinema Makeup School is at the complete discretion of an institution to which you may seek to transfer. Acceptance of the diploma or certificate you earn in the educational program is also at the complete discretion of the institution to which you may seek to transfer. If the diploma or certificate that you earn at this institution are not accepted at the institution to which you seek to transfer, you may be required to repeat some or all of your coursework at that institution. For this reason you should make certain that your attendance at this institution will meet your educational goals. This may include contacting an institution to which you may seek to transfer after attending Cinema Makeup School to determine if your diploma or certificate will transfer.

CMS does not accept the transfer of credits earned at other institutions or through achievement tests. CMS does not participate in articulation or transfer agree-





ments with any other colleges or universities. CMS does not accept ability-to-benefit students. CMS does not award credit for prior experiential learning.

ACADEMIC POLICIES

ATTENDANCE

Cinema Makeup School's attendance policy is designed to ensure that students maintain satisfactory academic progress in all of the courses required in their program of study. Students are expected to attend all classes, be on time, remain in class for the entire duration, and be an active participant in demonstrations and discussions.

ATTENDANCE RECORDS & ABSENCES

CMS maintains attendance records. Absences should occur only for urgent reasons such as ill health or other extenuating circumstances. Whenever possible, students should notify the Registrar in advance of any anticipated absences. Prior arrangements must be made with each faculty member for missed work.

Attendance is considered an essential part of the learning experience and individual instructors may implement specific policies regarding attendance for a

specific course, which may be more restrictive than the general institutional policies of CMS. The Registrar must approve the policy(s). Prior to the beginning of class, students must be notified of the policy(s) via the course syllabus.

Students are expected to attend class on time. Early departure of more than 15 minutes may adversely affect the student's grades. If a student misses a class or a portion thereof, the instructor is not required to repeat such material for the student. Therefore, it is highly recommended that students make every effort to attend all classes.

Any student who does not attend at least 75% of the scheduled class time will be placed on academic probation for the remainder of the program. The school directors will then investigate the student's academic progress and ability to satisfactorily complete the program requirements. After such investigation, a meeting with the student will be held to establish the student's interest in continuing the program, what work is to be made up, and whether the student should remain on academic probation. If it is apparent that the student

does not have any interest in continuing, he/she will be dropped from the program. Otherwise, the committee may determine (a) that the student is maintaining academic progress and may continue class on academic probation status until the end of the quarter; (b) that the student is not maintaining academic progress and the student will be withdrawn from the course; or (c) that the student is not maintaining academic progress in general, and the student will be withdrawn from CMS.

MISSED WORK

Make-up work may be required for any absence at the discretion of the instructor. The instructor has no obligation to provide make-up instruction or assignments to the students, including but not limited to, providing instruction on how to approach an assignment, what material was missed in class, administering an actual examination that the student missed, etc. Therefore, the student must make every effort to attend classes on a regular and consistent basis.

LEAVE OF ABSENCE

Students may request a leave of absence (LOA) for medical reasons, financial difficulties, military duty, personal difficulties, and jury duty. Students may also request an administrative leave when a course that is needed is not available. Students in need of an LOA must contact the Registrar. LOA requests must be supported by appropriate documentation. The Registrar will approve or deny LOA requests.

A student may not request an LOA during the first four weeks of his/her course. The duration of an LOA shall not exceed one year. Only one LOA may be granted per twelve-month period. Barring unforeseen circumstances (such as sudden hospitalization or illness), the appropriate paperwork and documentation must be submitted prior to a student's approved absence from their course. Students cannot be granted an LOA to avoid being dismissed because of lack of satisfactory academic progress or failure to fulfill the requirements of attendance.

Students returning from an LOA will only be allowed to join a class if there is a class available and if space is available in that class. Students are solely responsible for contacting the school at least two weeks prior to the start date of the class they wish to join to verify that space is available. (continued on next page)



POLICIES



If there is no space available, they must wait for the next available class. If the student is not in attendance on their scheduled return date, the student will be withdrawn.

ACADEMIC EVALUATIONS

CMS conducts evaluations of each student's progress at the end of each class. This evaluation standard applies to all certificate and diploma programs. At each of these evaluation points the student must maintain a minimum GPA of 2.00. A student with a GPA below 2.00 will be placed on academic probation. When on probation, a student is enrolled only under specific conditions imposed by the school directors of Cinema Makeup School.

ACADEMIC PROBATION

If the student on academic probation fails to raise the GPA to 2.0 or above for the subsequent term, the student will be suspended. The school directors may grant re-admission of a suspended student upon the student's petition. The re-admitted student is placed on academic probation upon their re-admission. If the student fails to increase their GPA to 2.01 or more, they will be permanently dismissed and not be eligible to enroll in CMS thereafter.

LETTER GRADE AND GRADE POINT SYSTEM

Grading is accomplished by both practical and written methods. Grading standards are as follows:

A = 90% - 100%	4.00 = Excellent
B = 80% - 89%	3.00 = Good
C = 70% - 79%	2.00 = Satisfactory
D = 60% - 69%	1.00 = Poor
F = 00% - 59%	0.75 = Failing
P/F = Pass / Fail	0.00 = Credit/No Credit
I = 00% = Incomplete	
W = 00% = No Grade Assigned	

No student shall qualify for graduation if they have failed any examination or have an overall grade average below 'C'. Extra workshops or retaking exams may be required to correct deficient grades to graduate.

RETENTION OF RECORDS

Cinema Makeup School will maintain student records for five years, as required by state law. Students have a right to access their records anytime that the institution is open and during normal business hours.

Students desiring to view their records may request

to see their records in the school office during normal business hours or may schedule a time to review records that is convenient to both the student and the school administration. If an appointment is made, the appointment shall be made no later than 48 hours after the student has requested to view their records. Extensions of this time shall be granted only upon decision of the student. Only the student and the school administration have a right to review student records.

No outside personnel will be allowed to view records except for appropriate state regulatory, federal regulatory or accrediting agency officials or upon proper subpoena.

TRANSCRIPTS

Student transcripts will be retained in the school's records. A copy of the academic transcript is available upon request by the student. This service is subject to the Family Educational Rights and Privacy Act of 1974, as amended.

The institute reserves the right to withhold an official transcript if the student's financial obligation to the institute is in arrears, or if the student is in arrears on any Federal or State student loan obligation. The institute also reserves the right to limit within its discretion the number of official transcripts provided without a processing fee. The usual processing fee is \$10.00 for a second copy.

Diplomas and official transcripts of records are available within fifteen (15) days from the receipt of a written request by the institute.

SCHEDULE OF CHARGES

Cinema Makeup School does not participate in federal or state financial aid programs. Students may obtain a loan through a private lending company. If the student obtains a loan to pay for an educational program, the student will have the responsibility to repay the full amount of the loan plus interest, less the amount of any refund. The student is entitled to a refund of the monies not paid from federal student financial aid program funds.

PAYMENT PLAN OPTION

Students at Cinema Makeup School have two options for paying their tuition. The first option is to pay the entire cost up front, including all required materials and lab fees. We realize this may not be possible for many students, though, so we also offer a financing option.

In general, the CMS payment plan requires students to pay the full cost of their materials and a percentage of the tuition and lab fees before the first day of class. The remaining balance will be divided into equal payments for the duration of the chosen course, with all costs having to be paid in full before the completion of the program. Extended payment plans may be offered upon credit approval. Students wishing to pay their tuition on a payment plan should speak with a financial advisor at CMS to work out an appropriate schedule of payments.

STUDENT TUITION RECOVERY FUND

It is a state requirement that a student that pays his or her tuition is required to pay a state-imposed assessment for the STRF.

The State of California established the Student Tuition Recovery Fund (STRF) to relieve or mitigate economic loss suffered by a student in an educational program at a qualifying institution, who is or was a California resident while enrolled, or was enrolled in a residency program, if the student enrolled in the institution, prepaid tuition, and suffered an economic loss. Unless relieved of the obligation to do so, you must pay the state-imposed assessment for the STRF, or it must be paid on your behalf, if you are a student in an educational program, who is a California resident, or are enrolled in a residency program, and prepay all or part of your tuition.

You are not eligible for protection from the STRF and you are not required to pay the STRF assessment if you are not a California resident, or are not enrolled in a residency program.

It is important that you keep copies of your enrollment agreement, financial aid documents, receipts, or any other information that documents the amount paid to the school. Questions regarding the STRF may be directed to the Bureau for Private Postsecondary Education, 2535 Capitol Oaks Drive, Suite 400, Sacramento, CA 95833, (916) 431-6959 or (888) 370-7589.

To be eligible for STRF, you must be a California resident or enrolled in a residency program, prepaid tuition, paid or deemed to have paid the STRF assessment, and suffered an economic loss as a result of any of the following:

1. The institution, a location of the institution, or an educational program offered by the institution was closed or discontinued, and you did not choose to participate in a teach-out plan approved by the Bureau or did not complete a chosen teach-out plan approved



by the Bureau.

2. You were enrolled at an institution or a location of the institution within the 120 day period before the closure of the institution or location of the institution, or were enrolled in an educational program within the 120 day period before the program was discontinued.
3. You were enrolled at an institution or a location of the institution more than 120 days before the closure of the institution or location of the institution, in an educational program offered by the institution as to which the Bureau determined there was a significant decline in the quality or value of the program more than 120 days before closure.
4. The institution has been ordered to pay a refund by the Bureau but has failed to do so.
5. The institution has failed to pay or reimburse loan proceeds under a federal student loan program as required by law, or has failed to pay or reimburse proceeds received by the institution in excess of tuition and other costs.
6. You have been awarded restitution, a refund, or other monetary award by an arbitrator or court, based on a violation of this chapter by an institution or representative of an institution, but have been unable to collect the award from the institution.
7. You sought legal counsel that resulted in the cancellation of one or more of your student loans and have an invoice for services rendered and evidence of the cancellation of the student loan or loans.

To qualify for STRF reimbursement, the application must be received within four (4) years from the date of the action or event that made the student eligible for recovery from STRF.

A student whose loan is revived by a loan holder or debt collector after a period of noncollection may, at any time, file a written application for recovery from STRF for the debt that would have otherwise been eligible for recovery. If it has been more than four (4) years since the action or event that made the student eligible, the student must have filed a written application for recovery within the original four (4) year period, unless the period has been extended by another act of law.

However, no claim can be paid to any student without a social security number or a taxpayer identification number.

STUDENTS' RIGHT TO CANCEL

You have the right to cancel the enrollment agreement you sign for a course of instruction-including any equipment, such as books, materials, and supplies,

or any other goods and services included in the agreement-and obtain a refund of charges paid through attendance at the first day of class or the seventh day after registration, whichever is later. Cancellation shall occur when you give written notice of cancellation at the address of the School shown on the top of the front page of the enrollment agreement. You can do this by mail, hand delivery, or telegram. The written notice of cancellation, if sent by mail, is effective when deposited in the mail, properly addressed, with postage prepaid. The written notice of cancellation need not take any particular form, and, however expressed, is effective if it demonstrates a wish to no longer be bound by the enrollment agreement.

If the school has given you any equipment, including books or other materials, you shall return it to the school within 3 days following the date of your notice of cancellation. If you fail to return this equipment, including books, or other materials, in good condition within the 3 day period, the school may deduct its documented cost for the equipment from any refund that may be due you. Once you pay for the equipment, it is yours to keep without further obligation. If you cancel the agreement, the school will refund any money that you paid less the \$100 application fee and any deduction for equipment not timely returned in good condition, within 3 days after your notice of cancellation is received. Due to sanitation concerns, makeup kit costs cannot be refunded unless the student cancels their enrollment prior to being issued their materials on the first day of class.

REFUND POLICY

The institutional refund policy for students who have completed 60 percent or less of the course of instruction shall be a pro rata refund. After the end of the cancellation period, you have a right to terminate your studies at this school at any time, and you have the right to receive a refund for the part of the course or program you have paid for and did not receive. You have the right to withdraw from the course of instruction at any time. If you withdraw from the course of instruction after the period allowed for cancellation, the school will remit a refund, less the \$100.00 registration fee and any STRF fees, within 30 days following your withdrawal. You are obligated to pay only for educational services rendered and for unreturned books or equipment. The pro rata refund is calculated as follows:

- a) Deduct a registration fee (\$100.00) and STRF fee (varies) from the total tuition charge.
- b) Divide this figure by the number of days in the

program.

- c) The quotient is the daily charge for the program.
- d) The amount owed by you for purposes of calculating a refund is derived by multiplying the total days attended by the daily charge for instruction.
- e) The refund would be any amount in excess of the figure derived in (d) that was paid by you.
- f) The refund amount shall be adjusted for equipment, if applicable.

If the student has received federal financial aid funds, the student is entitled to a refund of the monies not paid from federal student financial aid program funds.

INTERNATIONAL STUDENTS STUDENT VISA

CMS is proud to welcome students from all over the world. CMS is authorized under US Federal Law to issue I-20 forms for students with M-1 student visas. The I-20 documentation provided by CMS is only valid for student visas and does not authorize the student for external work experience. The I-20 form will only be valid for the time period in which the student is enrolled and attending classes at CMS.

M-1 VISA

An M-1 visa is an educational visa issued to students who wish to enter the United States in order to attend a vocational or technical school. The M-1 visas are issued for the duration of the student's program at CMS and are only valid for a maximum of 30 days after the student completes his or her program.

TRANSFERS AND EXTENSIONS

The flexibility of the M-1 visa in terms of transfers or extensions is very limited. Students that wish to transfer to another institution while studying on an M-1 visa may only do so if the new school also offers SEVIS-authorized M-1 programs. A new I-20 will have to be issued and processed if any changes to the student's program are made.

Requests for both transfers and extensions require the student to fill out a Change of Status (I-539) form and pay a processing fee. The I-539 will then have to be sent to the closest Bureau of Customs and Immigration Services (BCIS) office. Students wishing to change their status should speak to a CMS admissions representative before making any changes.

POLICIES



ENROLLMENT PROCESS

In order to apply for I-20 documentation from CMS, international students must complete an international registration form either online, over the phone, or through the mail. They must also provide a completed I-20 application, a \$100 non-refundable application fee and proof of financial support. Cinema Makeup School also requires proof of completion of secondary education (the equivalent of a high school diploma.)

Upon receiving this documentation, CMS will issue the student an acceptance letter and I-20 form. Once the student has received their I-20 paperwork and financial documentation, they will have to pay a Student and Exchange Visitor Information System (SEVIS) visa processing fee online.

The policies regarding visa issuance may vary by country and each student should be sure to check with his or her embassy regarding what paperwork and documentation is required. All U.S. embassies and consulates will require the student to prove that they have sufficient funds to cover the cost of the program and living expenses prior to issuing a student visa. The student must either provide documentation of these funds or written proof that they will receive financial support for the duration of the program.

Once the student has gathered their acceptance letter, I-20 form and SEVIS I-901 fee the documentation

should be brought to a U.S. embassy for processing after an appointment is made. The time frame required to receive a visa may vary, but CMS recommends allowing at least 2 or 3 months before the program start date. Once a visa is issued. The student should have their I-20 documents and passport stamped and returned. The student should then contact CMS via email or phone and let them know they are ready to begin their program.

ENTRY TO THE US

Upon entering the United States, the student will need to furnish both their passport and I-20 documentation with the appropriate stamps to U.S. Customs. The Customs officer will issue the student an I-94 card, stapled to a page of their passport. This card must remain in the passport while the student is in the United States.

After clearing customs, the student must report to CMS no more than 10 days after arrival or he or she will risk creating problems with their visa status.

INTERNATIONAL STUDENT GUIDELINES

The U.S. Government places many restrictions and requirements on international students including:

- Students must carry their passports, visa and I-20 documentation with them at all times
- Only I-20 documentation from a student's current

school is considered valid at any given time

- Students must contact CMS if they have received an I-20 form, but are declining acceptance or have chosen to attend another school so that CMS can cancel their I-20
- Students must notify both CMS and the U.S. Government if they move during their stay. They will need to complete an official Change of Address (AR-11) form

RESPONSIBILITIES OF CMS

CMS will be responsible for providing the following services to International students:

- Issuing I-20 documentation
- Vouching for student status as necessary by providing a student's course schedule and a letter confirming that the student is enrolled at CMS.
- Reporting changes in course content or duration that could affect a student's visa status
- Reporting a Leave of Absence, poor grades or failure
- Reporting completion of the program as scheduled

ADDITIONAL COSTS

In addition to the costs of tuition and materials, international students are required to pay the following fees:

- \$100 non-refundable registration fee (paid to CMS)
- \$350 SEVIS I-901 visa fee (paid online)

STUDENT SERVICES

International students have access to all of the same services as domestic students including assistance with housing, career planning, transportation questions and other issues. They should feel free to contact CMS via phone or email for assistance with any issues that arise or any questions they have prior to arriving in Los Angeles.

Graduating students are encouraged to meet with CMS administrators prior to leaving the country for advice in how to proceed in their career, what further education they need and to receive advice on how to market themselves to future employers. M-1 Students are not allowed to work for pay while in the U.S. but they can accept paid work in their home country once they return.

SCHOOL BREAKS AND HOLIDAYS

Many CMS students return to their home states and countries during school breaks. If a student on an M-1 visa wishes to return home during a school break he/she must report the trip to a CMS admissions representative prior to leaving. CMS will need to sign and date the student's I-20 form before departure or the student may be denied reentry to the U.S. Students leaving the country for any reason should carry all required documentation with them at all times, including their I-20, visa and passport.

GRADUATION

Once an international student has completed their course of study at Cinema Makeup School, the CMS admissions office must report the change of status to the SEVIS database. If a graduating student is planning to continue on to another course they should contact CMS admissions prior to graduation in order to begin the extension process.

DISCLAIMER

While CMS makes every effort to ensure that the information in this catalog is accurate and up-to-date, it is only provided as an informational resource to potential applicants. Students should be sure to double check regulations from the US State Department and BCIS as well as their local embassy or consulate prior to beginning the visa application process. If any discrepancies in information arise, the student should obey the regulations provided by the US government.



DISCLOSURE STATEMENTS

Cinema Makeup School is a private postsecondary educational institute approved to operate through 2019 by the Bureau for Private Postsecondary Education. Approval to operate means compliance with state standards as set forth in the CEC and 5, CCR. Cinema Makeup School chooses not to pursue accreditation by an accrediting agency recognized by the U.S. Department of Education.

As a prospective student you are encouraged to review this catalog prior to signing an enrollment agreement. You are also encouraged to review the School Performance Fact Sheet, which must be provided to you prior to signing an enrollment agreement.

Any questions a student may have regarding this catalog that have not been satisfactorily answered by the institution may be directed to the Bureau for Private Postsecondary Education at 2535 Capitol Oaks Drive, Suite 400, Sacramento California, 95833, online at www.bppe.ca.gov or via telephone (888)-370-7589 or fax (916) 263-1897.

A student or any member of the public may file a complaint about this institution with the Bureau for Private Postsecondary Education by calling 888-370-7589 or by completing a complaint form, which can be obtained on the bureau's Internet Web site (www.bppe.ca.gov).

CMS does not have a pending petition in bankruptcy, is not operating as a debtor in possession, has not filed a petition within the preceding five years, and has not had a petition in bankruptcy filed against it within the preceding five years that resulted in reorganization under Chapter 11 of the United States Bankruptcy Code (11 U.S.C. Sec. 1101 et seq.).

CMS does not participate in state or federal financial aid programs. Students may obtain a loan through a private lending company. If the student does so, the student will have the responsibility to repay the full amount of the loan plus interest, less the amount of any refund.





CINEMAMAKEUP

S C H O O L



3780 Wilshire Boulevard, Suite 202
Los Angeles / California 90010 USA

t 213.368.1234 f 213.739.0819
info@cinemamakeup.com
www.cinemamakeup.com

*The images in this catalog are all the work of
CMS students, graduates and instructors;
however, they are not intended as an
illustration or guarantee of specific activities
or lessons.*

*CMS warmly thanks all of the students, gradu-
ates, instructors, models and photographers
who contributed work to this catalog.*



[youtube.com/cinemamakeup](https://www.youtube.com/cinemamakeup)



[facebook.com/cinemamakeupschoolfanpage](https://www.facebook.com/cinemamakeupschoolfanpage)



[@cinemamakeup](https://twitter.com/cinemamakeup)



[@cinemamakeupschool](https://www.instagram.com/cinemamakeupschool)

3780 Wilshire Boulevard, Suite 202
Los Angeles, California 90010 USA
t 213.368.1234 f 213.739.0819

www.cinemamakeup.com

