

ACADEMY OF BEAUTY
LA's Best Kept Secret

3834 MAIN STREET
CULVER CITY, CALIFORNIA 90232
(310) 837-0411
www.TheAcademy.LA

SCHOOL PERFORMANCE FACT SHEET
CALENDAR YEARS 2018 & 2019

Cosmetology – 1600 Hours

On-time Completion Rates

(Includes data for the two calendar years prior to reporting)

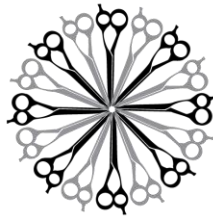
Calendar Year	Number of Students Who Began Program	Students Available for Graduation	Number of On-time Graduates	On-Time Completion Rate
2018	27	12	6	50%
2019	32	12	3	25%

Student's Initials: _____ Date: _____
Initial only after you have had sufficient time to read and understand the information

Students Completing Within 150% of the Published Program Length

Calendar Year	Number of Students Who Began Program	Students Available for Graduation	150% Graduates	150% Completion Rate
2018	27	12	6	50%
2019	32	12	9	75%

Student's Initials: _____ Date: _____
Initial only after you have had sufficient time to read and understand the information



ACADEMY OF BEAUTY
LA's Best Kept Secret

3834 MANN STREET
CULVER CITY, CALIFORNIA 90232
(310) 837-0411
www.TheAcademy.LA

Job Placement Rates

(Includes data for the tow calendar years prior to reporting)

Calendar Year	Number of Students Who Began Program	Number of Graduates	Graduates Available for Employment	Graduates Employed in the Field	Placement Rate % Employed in the Field
2018	27	12	6	6	100%
2019	32	12	10	9	90%

You may obtain from the institution a list of the employment positions determined to be in the field for which a student received education and training. To obtain this list, please contact director Tim Nguyen at (310) 837-0411 or timnguyen114@msn.com

Gainful Employment Categories

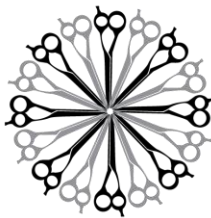
(Includes data for the tow calendar years prior to reporting)

Part Time vs. Full time Employment

Calendar Year	Graduates Employed in the Field 20 to 29 hours per week	Graduates Employed in the Field at least 30 hours per week	Total Graduates Employed in the Field
2018	4	2	6
2019	6	3	9

Single Position vs. Concurrent Aggregated Positions

Calendar Year	Graduates Employed in the Field in a Single Position	Graduates Employed in the Field in Concurrent Aggregated Positions	Total Graduates Employed in the Field
2018	5	1	6
2019	9	0	9



ACADEMY OF BEAUTY
LA's Best Kept Secret

3834 MAIN STREET
CULVER CITY, CALIFORNIA 90232
(310) 837-0411
www.TheAcademy.LA

Self Employed/Freelance Positions

Calendar Year	Graduates Employed who are Self-Employed or Working Freelance	Total Graduates Employed in the Field
2018	1	6
2019	6	9

Institutional Employment

Calendar Year	Graduates Employed in the Field who are Employed by the Institution, an Employer Owned by the Institution, or an Employer who Shares Ownership with the Institution	Total Graduates Employed in the Field
2018	0	6
2019	0	9

Student's Initials: _____ Date: _____

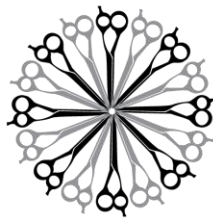
Initial only after you have had sufficient time to read and understand the information

This program may result in freelance or self-employment

- The work available to graduates of this program is usually for freelance or self-employment
- This type of work may not be consistent
- The period of employment can range from one day to weeks to several months
- Hours worked in a day or week may be more or less than the traditional 8 hours work day or 40 hours work week
- You can expect to spend unpaid time expanding your networks, advertising, promoting your services, or honing your skills.
- Once graduates begin to work freelance or are self-employed, they will be asked to provide documentation that they are employed as such so that they may be counted as placed for our job placement records
- Students initialing this disclosure understand that either a majority or all of this school's graduates are employed in this manner and understand what comprises this work style.

Student's Initials: _____ Date: _____

Initial only after you have had sufficient time to read and understand the information



ACADEMY OF BEAUTY
LA's Best Kept Secret

3834 MAIN STREET
CULVER CITY, CALIFORNIA 90232
(310) 837-0411
www.TheAcademy.LA

License Examination Passage Rate

(Includes data for the two calendar years prior to reporting)

Calendar Year	Number of Graduates in Calendar Year	Number of Graduates Taking Exam	Number Who Passed First Available Exam	Number Who Failed First Available Exam	Passage Rate
2018	12	6	5	1	83%
2019	12	10	8	2	80%

Licensure examination passage data is not available from the state agency administering the examination. We are unable to collect data from 12 graduates.

Student's Initials: _____ Date: _____
Initial only after you have had sufficient time to read and understand the information

Salary and Wage Information

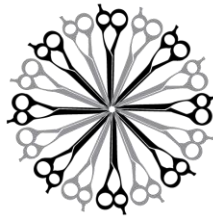
(Includes data for the two calendar years prior to reporting)

Annual Salary Wages Reported for Graduates Employed in the Field

Calendar Year	Graduates Available for Employment	Graduates Employed in the Field	Annual Salary and Wages Reported Graduates Employed in the Field					
			15,000-20,000	20,001-25,000	25,001-30,000	30,001-35,000	35,001-40,000	No Salary Information Reported
2018	6	6	1	1	3	1	0	0
2019	10	9	0	3	4	2	0	0

A list of sources used to substantiate salary disclosures is available from the school. To obtain this list, please ask an institutional representative where to view this list.

Student's Initials: _____ Date: _____
Initial only after you have had sufficient time to read and understand the information



ACADEMY OF BEAUTY
LA's Best Kept Secret

3834 MAIN STREET
CULVER CITY, CALIFORNIA 90232
(310) 837-0411
www.TheAcademy.LA

Cost of Educational Program

Total charges for the program for students completing on-time in 2018: \$8,975

Total charges may be higher for students that do not complete on-time.

Total charges for the program for students completing on-time in 2019: \$8,975

Total charges may be higher for students that do not complete on-time.

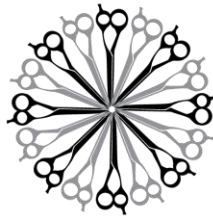
Student's Initials: _____ Date: _____

**Initial only after you have had sufficient time
to read and understand the information**

Students at Academy of Beauty are not eligible for federal student loans. This institution does not meet the U.S. Department of Education criteria that would allow its students to participate in federal student aid programs. Academy of Beauty is eligible, but chooses not to participate in federal student aid programs. Therefore, students who attend this institution do not have federal student loans.

Student's Initials: _____ Date: _____

**Initial only after you have had sufficient time
to read and understand the information**



ACADEMY OF BEAUTY
LA's Best Kept Secret

3834 MAIN STREET
CULVER CITY, CALIFORNIA 90232
(310) 837-0411
www.TheAcademy.LA

This fact sheet is filed with the Bureau for Private Postsecondary Education. Regardless of any information you may have relating to completion rates, placement rates, starting salaries, or license exam passage rates, this fact sheet contains the information as calculated pursuant to state law.

Any questions a student may have regarding this fact sheet that have not been satisfactorily answered by the institution may be directed to the

Bureau for Private Postsecondary Education at:
1747 N. Market Blvd, Suite 225
Sacramento, CA 95834,
www.bppe.ca.gov,
toll-free telephone number (888) 370-7589
or by fax (916) 263-1897

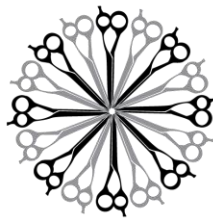
Student Name – Print

Student Signature

Date

School Official

Date



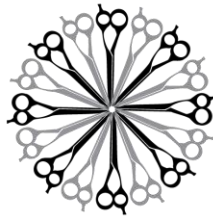
ACADEMY OF BEAUTY
LA's Best Kept Secret

3834 MAIN STREET
CULVER CITY, CALIFORNIA 90232
(310) 837-0411
www.TheAcademy.LA

Definitions

The following are definitions for the Performance Fact Sheet:

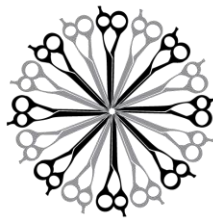
- “Number of Students Who Began the Program” means the number of students who began the program who are scheduled to complete the program within 100% of the published program length within the reporting calendar year and excludes all students who cancelled during the cancellation period.
- “Students Available for Graduation” is the number of students who began program minus the number of students who have died, been incarcerated, or called to active military duty.
- “Number of On-time Graduates” is the number of students who completed the program within 100% of the published program length within the reporting calendar year.
- “On-time Completion Rate” is the number of On-time Graduates divided by the number of Students Available for Graduation.
- “150% Graduates” is the number of students who completed the program within 150% of the program length (includes on-time graduates).
- “150% Completion Rate” is the number of students who completed the program in the reported calendar year within 150% of the published program length, including on-time graduates, divided by the number of students available for graduation.
- “Graduates Available for Employment” means the number of graduates minus the number of graduates unavailable for employment
- “Graduates Unavailable for Employment” means graduates who, after graduation, die, become incarcerated, are called to active military duty, are international students that leave the United States, or are continuing their education in an accredited or bureau-approved postsecondary institution.



ACADEMY OF BEAUTY
LA's Best Kept Secret

3834 MAIN STREET
CULVER CITY, CALIFORNIA 90232
(310) 837-0411
www.TheAcademy.LA

-
- “Graduates Employed in the Field” means graduates who beginning within six months after a student completes the applicable education program are gainfully employed, whose employment has been reported, and for whom the institution has documented certification of employment. For occupations for which the state requires passing an examination, the six months period begins after the announcement of the examination results for the first examinations available after a student completes an applicable educational program.
 - “Placement Rate Employed in the Field” is calculated by dividing the number of graduates gainfully employed in the field by the number of graduates available for employment.
 - “Number of Graduates Taking Exam” is the number of graduates who took the first available exam in the reported calendar year.
 - “First Available Exam Date” is the date for the first available exam after a student completed a program
 - “Passage Rate” is calculated by dividing the number of graduates who passed the exam by the number of graduates of graduates who took the reported licensing exam.
 - “Number Who Passed the First Available Exam” is the number of graduates who took and passed the first available licensing exam after completing the program.
 - “Salary” is as reported by graduates or graduate’s employer
 - “No Salary Information Reported” is the number of graduates for whom, after making reasonable attempts, the school was not able to obtain salary information.



ACADEMY OF BEAUTY
LA's Best Kept Secret

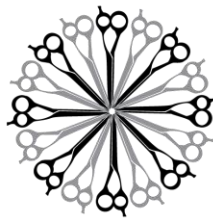
3834 MAIN STREET
CULVER CITY, CALIFORNIA 90232
(310) 837-0411
www.TheAcademy.LA

STUDENT'S RIGHT TO CANCEL

You have the right to cancel this agreement for a course of instruction offered in this agreement, without any penalty or obligation, if notice of cancellation is made prior to or until midnight of the first day of class, or the seventh day after enrollment, whichever is later. Students who withdraw after the cancellation period, up until 60% of the course completion, are entitled to a pro rata refund of tuition. Cancellation shall occur when you give written notice of cancellation at the address of the School, 3834 Main Street Culver City, CA 90232, and to the attention of the School Director. Your notice of cancellation can be by mail, electronic mail, hand delivery, or facsimile. The written notice of cancellation, if sent by mail, is effective when deposited in the mail properly addressed with postage prepaid. The written notice of cancellation need not take any particular form and, however expressed, it is effective if it shows that you no longer wish to be bound by this Agreement. If you cancel prior to or on the first day of class, or the seventh day after enrollment, which is later, your refund shall be one hundred percent (100%) of the amount paid for institutional charges, less registration fee not to exceed seventy five dollars (\$75), and less any kit supplies such as brooks, material and equipment issued and accepted by you. Note: Kit supplies are not returnable due to sanitary reasons. Therefore, once you accepted the kit supplies, the cost will be charged to your account. If you cancel this Agreement, The School will refund any money paid by you, less registration fee, kit supplies costs, and STRF (Student Tuition Recovery Fund) within 30 days after notice of cancellation is received by the School.

If you have received federal student financial aid funds, you are entitled to a refund of moneys not paid from federal student financial aid program funds.

If you obtained a loan to pay for an educational program, you will have the responsibility to repay the full amount of the loan plus interest, less the amount of any refund.



ACADEMY OF BEAUTY
LA's Best Kept Secret

3834 MAIN STREET
CULVER CITY, CALIFORNIA 90232
(310) 837-0411
www.TheAcademy.LA

SCHOOL PERFORMANCE FACT SHEET
CALENDAR YEARS OF 2018 & 2019

Esthetics – 600 Hours

On-time Completion Rates

(Includes data for the two calendar years prior to reporting)

Calendar Year	Number of Students Who Began Program	Students Available for Graduation	Number of On-time Graduates	Completion Rate
2018	103	83	69	83%
2019	94	68	43	63%

Student's Initials: _____ Date: _____

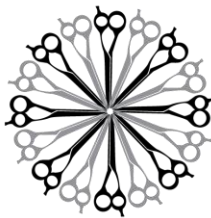
Initial only after you have had sufficient time to read and understand the information

Students Completing Within 150% of the Published Program Length

Calendar Year	Number of Students Who Began Program	Students Available for Graduation	150% Graduates	150% Completion Rate
2018	103	83	14	17%
2019	94	68	25	37%

Student's Initials: _____ Date: _____

Initial only after you have had sufficient time to read and understand the information



ACADEMY OF BEAUTY
LA's Best Kept Secret

3834 MAIN STREET
CULVER CITY, CALIFORNIA 90232
(310) 837-0411
www.TheAcademy.LA

Job Placement Rates

(Includes data for the tow calendar years prior to reporting)

Calendar Year	Number of Students Who Began Program	Number of Graduates	Graduates Available for Employment	Graduates Employed in the Field	Placement Rate Employed in the Field
2018	103	83	69	66	96%
2019	94	68	48	40	83%

You may obtain from the institution a list of the employment positions determined to be in the field for which a student received education and training. To obtain this list, please contact director Tim Nguyen at (310) 837-0411 or timnguyen114@msn.com

Gainful Employment Categories

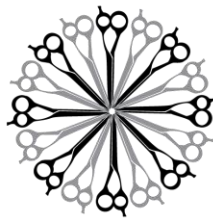
(Includes data for the tow calendar years prior to reporting)

Part Time vs. Full time Employment

Calendar Year	Graduates Employed in the Field 20 to 29 hours per week	Graduates Employed in the Field at least 30 hours per week	Total Graduates Employed in the Field
2018	38	28	66
2019	22	18	40

Single Position vs. Concurrent Aggregated Positions

Calendar Year	Graduates Employed in the Field in a Single Position	Graduates Employed in the Field in Concurrent Aggregated Positions	Total Graduates Employed in the Field
2018	52	14	66
2019	39	1	40



ACADEMY OF BEAUTY
LA's Best Kept Secret

3834 MAIN STREET
CULVER CITY, CALIFORNIA 90232
(310) 837-0411
www.TheAcademy.LA

Self Employed/Freelance Positions

Calendar Year	Graduates Employed who are Self-Employed or Working Freelance	Total Graduates Employed in the Field
2018	31	66
2019	16	40

Institutional Employment

Calendar Year	Graduates Employed in the Field who are Employed by the Institution, an Employer Owned by the Institution, or an Employer who Shares Ownership with the Institution	Total Graduates Employed in the Field
2018	0	66
2019	0	40

Student's Initials: _____ Date: _____

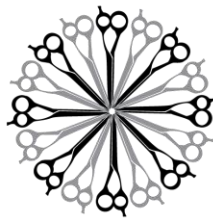
Initial only after you have had sufficient time to read and understand the information

This program may result in freelance or self-employment

- The work available to graduates of this program is usually for freelance or self-employment
- This type of work may not be consistent
- The period of employment can range from one day to weeks to several months
- Hours worked in a day or week may be more or less than the traditional 8 hours work day or 40 hours work week
- You can expect to spend unpaid time expanding your networks, advertising, promoting your services, or honing your skills.
- Once graduates begin to work freelance or are self-employed, they will be asked to provide documentation that they are employed as such so that they may be counted as placed for our job placement records
- Students initialing this disclosure understand that either a majority or all of this school's graduates are employed in this manner and understand what comprises this work style.

Student's Initials: _____ Date: _____

Initial only after you have had sufficient time to read and understand the information



ACADEMY OF BEAUTY
LA's Best Kept Secret

3834 MAIN STREET
CULVER CITY, CALIFORNIA 90232
(310) 837-0411
www.TheAcademy.LA

License Examination Passage Rate

(Includes data for the two calendar years prior to reporting)

Calendar Year	Number of Graduates in Calendar Year	Number of Graduates Taking Exam	Number Who Passed First Available Exam	Number Who Failed First Available Exam	Passage Rate
2018	83	69	65	4	94%
2019	68	48	47	1	98%

Licensure examination passage data is not available from the state agency administering the examination. We are unable to collect data from 68 graduates.

Student's Initials: _____ Date: _____
Initial only after you have had sufficient time to read and understand the information

Salary and Wage Information

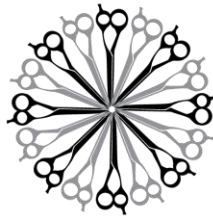
(Includes data for the two calendar years prior to reporting)

Annual Salary Wages Reported for Graduates Employed in the Field

Calendar Year	Graduates Available for Employment	Graduates Employed in the Field	Annual Salary and Wages Reported Graduates Employed in the Field					
			15,000-20,000	20,001-25,000	25,001-30,000	30,001-35,000	35,001-40,000	No Salary Information Reported
2018	69	66	3	11	23	27	2	0
2019	48	40	0	10	19	10	1	0

A list of sources used to substantiate salary disclosures is available from the school. To obtain this list, please ask an institutional representative where to view this list.

Student's Initials: _____ Date: _____
Initial only after you have had sufficient time to read and understand the information



ACADEMY OF BEAUTY
LA's Best Kept Secret

3834 MAIN STREET
CULVER CITY, CALIFORNIA 90232
(310) 837-0411
www.TheAcademy.LA

Cost of Educational Program

Total charges for the program for students completing on-time in 2018: \$7,475

Total charges may be higher for students that do not complete on-time.

Total charges for the program for students completing on-time in 2019: \$7,475

Total charges may be higher for students that do not complete on-time.

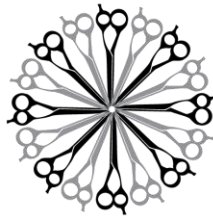
Student's Initials: _____ Date: _____

**Initial only after you have had sufficient time
to read and understand the information**

Students at Academy of Beauty are not eligible for federal student loans. This institution does not meet the U.S. Department of Education criteria that would allow its students to participate in federal student aid programs. Academy of Beauty is eligible, but chooses not to participate in federal student aid programs. Therefore, students who attend this institution do not have federal student loans.

Student's Initials: _____ Date: _____

**Initial only after you have had sufficient time
to read and understand the information**



ACADEMY OF BEAUTY
LA's Best Kept Secret

3834 MARKET STREET
CULVER CITY, CALIFORNIA 90232
(310) 837-0411
www.TheAcademy.LA

This fact sheet is filed with the Bureau for Private Postsecondary Education. Regardless of any information you may have relating to completion rates, placement rates, starting salaries, or license exam passage rates, this fact sheet contains the information as calculated pursuant to state law.

Any questions a student may have regarding this fact sheet that have not been satisfactorily answered by the institution may be directed to the

Bureau for Private Postsecondary Education at:
1747 N. Market Blvd, Suite 225
Sacramento, CA 95834,
www.bppe.ca.gov,
toll-free telephone number (888) 370-7589
or by fax (916) 263-1897

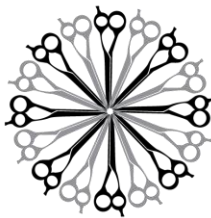
Student Name – Print

Student Signature

Date

School Official

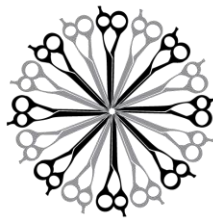
Date



Definitions

The following are definitions for the Performance Fact Sheet:

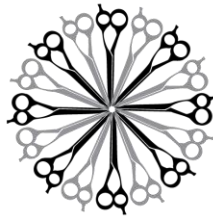
- “Number of Students Who Began the Program” means the number of students who began the program who are scheduled to complete the program within 100% of the published program length within the reporting calendar year and excludes all students who cancelled during the cancellation period.
- “Students Available for Graduation” is the number of students who began program minus the number of students who have died, been incarcerated, or called to active military duty.
- “Number of On-time Graduates” is the number of students who completed the program within 100% of the published program length within the reporting calendar year.
- “On-time Completion Rate” is the number of On-time Graduates divided by the number of Students Available for Graduation.
- “150% Graduates” is the number of students who completed the program within 150% of the program length (includes on-time graduates).
- “150% Completion Rate” is the number of students who completed the program in the reported calendar year within 150% of the published program length, including on-time graduates, divided by the number of students available for graduation.
- “Graduates Available for Employment” means the number of graduates minus the number of graduates unavailable for employment
- “Graduates Unavailable for Employment” means graduates who, after graduation, die, become incarcerated, are called to active military duty, are international students that leave the United States, or are continuing their education in an accredited or bureau-approved postsecondary institution.



ACADEMY OF BEAUTY
LA's Best Kept Secret

3834 MAIN STREET
CULVER CITY, CALIFORNIA 90232
(310) 837-0411
www.TheAcademy.LA

-
- “Graduates Employed in the Field” means graduates who beginning within six months after a student completes the applicable education program are gainfully employed, whose employment has been reported, and for whom the institution has documented certification of employment. For occupations for which the state requires passing an examination, the six months period begins after the announcement of the examination results for the first examinations available after a student completes an applicable educational program.
 - “Placement Rate Employed in the Field” is calculated by dividing the number of graduates gainfully employed in the field by the number of graduates available for employment.
 - “Number of Graduates Taking Exam” is the number of graduates who took the first available exam in the reported calendar year.
 - “First Available Exam Date” is the date for the first available exam after a student completed a program
 - “Passage Rate” is calculated by dividing the number of graduates who passed the exam by the number of graduates of graduates who took the reported licensing exam.
 - “Number Who Passed the First Available Exam” is the number of graduates who took and passed the first available licensing exam after completing the program.
 - “Salary” is as reported by graduates or graduate’s employer
 - “No Salary Information Reported” is the number of graduates for whom, after making reasonable attempts, the school was not able to obtain salary information.



ACADEMY OF BEAUTY
LA's Best Kept Secret

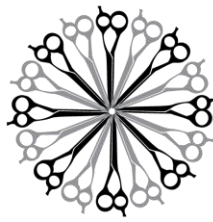
3834 MAIN STREET
CULVER CITY, CALIFORNIA 90232
(310) 837-0411
www.TheAcademy.LA

STUDENT'S RIGHT TO CANCEL

You have the right to cancel this agreement for a course of instruction offered in this agreement, without any penalty or obligation, if notice of cancellation is made prior to or until midnight of the first day of class, or the seventh day after enrollment, whichever is later. Students who withdraw after the cancellation period, up until 60% of the course completion, are entitled to a pro rata refund of tuition. Cancellation shall occur when you give written notice of cancellation at the address of the School, 3834 Main Street Culver City, CA 90232, and to the attention of the School Director. Your notice of cancellation can be by mail, electronic mail, hand delivery, or facsimile. The written notice of cancellation, if sent by mail, is effective when deposited in the mail properly addressed with postage prepaid. The written notice of cancellation need not take any particular form and, however expressed, it is effective if it shows that you no longer wish to be bound by this Agreement. If you cancel prior to or on the first day of class, or the seventh day after enrollment, which is later, your refund shall be one hundred percent (100%) of the amount paid for institutional charges, less registration fee not to exceed seventy five dollars (\$75), and less any kit supplies such as brooks, material and equipment issued and accepted by you. Note: Kit supplies are not returnable due to sanitary reasons. Therefore, once you accepted the kit supplies, the cost will be charged to your account. If you cancel this Agreement, The School will refund any money paid by you, less registration fee, kit supplies costs, and STRF (Student Tuition Recovery Fund) within 30 days after notice of cancellation is received by the School.

If you have received federal student financial aid funds, you are entitled to a refund of moneys not paid from federal student financial aid program funds.

If you obtained a loan to pay for an educational program, you will have the responsibility to repay the full amount of the loan plus interest, less the amount of any refund.



ACADEMY OF BEAUTY
LA's Best Kept Secret

3834 MAIN STREET
CULVER CITY, CALIFORNIA 90232
(310) 837-0411
www.TheAcademy.LA

SCHOOL PERFORMANCE FACT SHEET

CALENDAR YEARS OF 2018 & 2019

Instructor Training – 600 Hours

On-time Completion Rates

(Includes data for the two calendar years prior to reporting)

Calendar Year	Number of Students Who Began Program	Students Available for Graduation	Number of On-time Graduates	Completion Rate
2018	0	0	0	0
2019	0	0	0	0

Student's Initials: _____ Date: _____

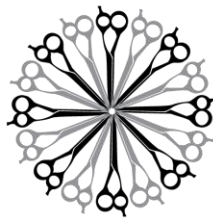
Initial only after you have had sufficient time to read and understand the information

Students Completing Within 150% of the Published Program Length

Calendar Year	Number of Students Who Began Program	Students Available for Graduation	150% Graduates	150% Completion Rate
2018	0	0	0	0
2019	0	0	0	0

Student's Initials: _____ Date: _____

Initial only after you have had sufficient time to read and understand the information



Job Placement Rates

(Includes data for the tow calendar years prior to reporting)

Calendar Year	Number of Students Who Began Program	Number of Graduates	Graduates Available for Employment	Graduates Employed in the Field	Placement Rate Employed in the Field
2018	0	0	0	0	0
2019	0	0	0	0	0

You may obtain from the institution a list of the employment positions determined to be in the field for which a student received education and training. To obtain this list, please contact director Tim Nguyen at (310) 837-0411 or timnguyen114@msn.com

Gainful Employment Categories

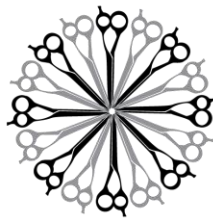
(Includes data for the tow calendar years prior to reporting)

Part Time vs. Full time Employment

Calendar Year	Graduates Employed in the Field 20 to 29 hours per week	Graduates Employed in the Field at least 30 hours per week	Total Graduates Employed in the Field
2018	0	0	0
2019	0	0	0

Single Position vs. Concurrent Aggregated Positions

Calendar Year	Graduates Employed in the Field in a Single Position	Graduates Employed in the Field in Concurrent Aggregated Positions	Total Graduates Employed in the Field
2018	0	0	0
2019	0	0	0



ACADEMY OF BEAUTY
LA's Best Kept Secret

3834 MAIN STREET
CULVER CITY, CALIFORNIA 90232
(310) 837-0411
www.TheAcademy.LA

Self Employed/Freelance Positions

Calendar Year	Graduates Employed who are Self-Employed or Working Freelance	Total Graduates Employed in the Field
2018	0	0
2019	0	0

Institutional Employment

Calendar Year	Graduates Employed in the Field who are Employed by the Institution, an Employer Owned by the Institution, or an Employer who Shares Ownership with the Institution	Total Graduates Employed in the Field
2018	0	0
2019	0	0

Student's Initials: _____ Date: _____

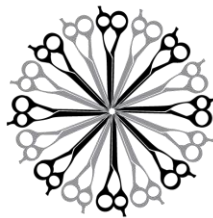
Initial only after you have had sufficient time to read and understand the information

This program may result in freelance or self-employment

- The work available to graduates of this program is usually for freelance or self-employment
- This type of work may not be consistent
- The period of employment can range from one day to weeks to several months
- Hours worked in a day or week may be more or less than the traditional 8 hours work day or 40 hours work week
- You can expect to spend unpaid time expanding your networks, advertising, promoting your services, or honing your skills.
- Once graduates begin to work freelance or are self-employed, they will be asked to provide documentation that they are employed as such so that they may be counted as placed for our job placement records
- Students initialing this disclosure understand that either a majority or all of this school's graduates are employed in this manner and understand what comprises this work style.

Student's Initials: _____ Date: _____

Initial only after you have had sufficient time to read and understand the information



License Examination Passage Rate

(Includes data for the two calendar years prior to reporting)

Calendar Year	Number of Graduates in Calendar Year	Number of Graduates Taking Exam	Number Who Passed First Available Exam	Number Who Failed First Available Exam	Passage Rate
2018	0	0	0	0	0
2019	0	0	0	0	0

Licensure examination passage data is not available from the state agency administering the examination. We are unable to collect data from 0 graduates.

Student's Initials: _____ Date: _____
Initial only after you have had sufficient time to read and understand the information

Salary and Wage Information

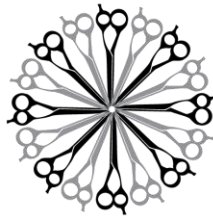
(Includes data for the two calendar years prior to reporting)

Annual Salary Wages Reported for Graduates Employed in the Field

Calendar Year	Graduates Available for Employment	Graduates Employed in the Field	Annual Salary and Wages Reported Graduates Employed in the Field					
			15,000-20,000	20,001-25,000	25,001-30,000	30,001-35,000	35,001-40,000	No Salary Information Reported
2018	0	0	0	0	0	0	0	0
2019	0	0	0	0	0	0	0	0

A list of sources used to substantiate salary disclosures is available from the school. To obtain this list, please ask an institutional representative where to view this list.

Student's Initials: _____ Date: _____
Initial only after you have had sufficient time to read and understand the information



ACADEMY OF BEAUTY
LA's Best Kept Secret

3834 MAIN STREET
CULVER CITY, CALIFORNIA 90232
(310) 837-0411
www.TheAcademy.LA

Cost of Educational Program

Total charges for the program for students completing on-time in 2018: \$5,075

Total charges may be higher for students that do not complete on-time.

Total charges for the program for students completing on-time in 2019: \$5,075

Total charges may be higher for students that do not complete on-time.

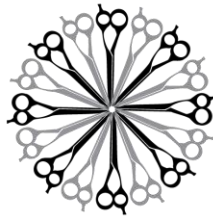
Student's Initials: _____ Date: _____

**Initial only after you have had sufficient time
to read and understand the information**

Students at Academy of Beauty are not eligible for federal student loans. This institution does not meet the U.S. Department of Education criteria that would allow its students to participate in federal student aid programs. Academy of Beauty is eligible, but chooses not to participate in federal student aid programs. Therefore, students who attend this institution do not have federal student loans.

Student's Initials: _____ Date: _____

**Initial only after you have had sufficient time
to read and understand the information**



ACADEMY OF BEAUTY
LA's Best Kept Secret

3834 MAIN STREET
CULVER CITY, CALIFORNIA 90232
(310) 837-0411
www.TheAcademy.LA

This fact sheet is filed with the Bureau for Private Postsecondary Education. Regardless of any information you may have relating to completion rates, placement rates, starting salaries, or license exam passage rates, this fact sheet contains the information as calculated pursuant to state law.

Any questions a student may have regarding this fact sheet that have not been satisfactorily answered by the institution may be directed to the

Bureau for Private Postsecondary Education at:
1747 N. Market Blvd, Suite 225
Sacramento, CA 95834,
www.bppe.ca.gov,
toll-free telephone number (888) 370-7589
or by fax (916) 263-1897

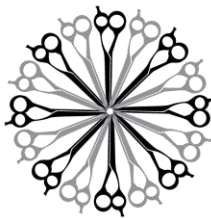
Student Name – Print

Student Signature

Date

School Official

Date



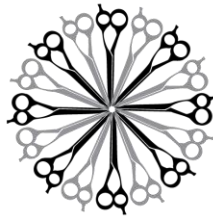
ACADEMY OF BEAUTY
LA's Best Kept Secret

3834 MAIN STREET
CULVER CITY, CALIFORNIA 90232
(310) 837-0411
www.TheAcademy.LA

Definitions

The following are definitions for the Performance Fact Sheet:

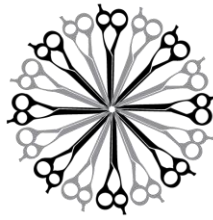
- “Number of Students Who Began the Program” means the number of students who began the program who are scheduled to complete the program within 100% of the published program length within the reporting calendar year and excludes all students who cancelled during the cancellation period.
- “Students Available for Graduation” is the number of students who began program minus the number of students who have died, been incarcerated, or called to active military duty.
- “Number of On-time Graduates” is the number of students who completed the program within 100% of the published program length within the reporting calendar year.
- “On-time Completion Rate” is the number of On-time Graduates divided by the number of Students Available for Graduation.
- “150% Graduates” is the number of students who completed the program within 150% of the program length (includes on-time graduates).
- “150% Completion Rate” is the number of students who completed the program in the reported calendar year within 150% of the published program length, including on-time graduates, divided by the number of students available for graduation.
- “Graduates Available for Employment” means the number of graduates minus the number of graduates unavailable for employment
- “Graduates Unavailable for Employment” means graduates who, after graduation, die, become incarcerated, are called to active military duty, are international students that leave the United States, or are continuing their education in an accredited or bureau-approved postsecondary institution.



ACADEMY OF BEAUTY
LA's Best Kept Secret

3834 MAIN STREET
CULVER CITY, CALIFORNIA 90232
(310) 837-0411
www.TheAcademy.LA

-
- “Graduates Employed in the Field” means graduates who beginning within six months after a student completes the applicable education program are gainfully employed, whose employment has been reported, and for whom the institution has documented certification of employment. For occupations for which the state requires passing an examination, the six months period begins after the announcement of the examination results for the first examinations available after a student completes an applicable educational program.
 - “Placement Rate Employed in the Field” is calculated by dividing the number of graduates gainfully employed in the field by the number of graduates available for employment.
 - “Number of Graduates Taking Exam” is the number of graduates who took the first available exam in the reported calendar year.
 - “First Available Exam Date” is the date for the first available exam after a student completed a program
 - “Passage Rate” is calculated by dividing the number of graduates who passed the exam by the number of graduates of graduates who took the reported licensing exam.
 - “Number Who Passed the First Available Exam” is the number of graduates who took and passed the first available licensing exam after completing the program.
 - “Salary” is as reported by graduates or graduate’s employer
 - “No Salary Information Reported” is the number of graduates for whom, after making reasonable attempts, the school was not able to obtain salary information.



ACADEMY OF BEAUTY
LA's Best Kept Secret

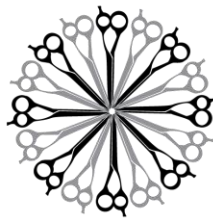
3834 MAIN STREET
CULVER CITY, CALIFORNIA 90232
(310) 837-0411
www.TheAcademy.LA

STUDENT'S RIGHT TO CANCEL

You have the right to cancel this agreement for a course of instruction offered in this agreement, without any penalty or obligation, if notice of cancellation is made prior to or until midnight of the first day of class, or the seventh day after enrollment, whichever is later. Students who withdraw after the cancellation period, up until 60% of the course completion, are entitled to a pro rata refund of tuition. Cancellation shall occur when you give written notice of cancellation at the address of the School, 3834 Main Street Culver City, CA 90232, and to the attention of the School Director. Your notice of cancellation can be by mail, electronic mail, hand delivery, or facsimile. The written notice of cancellation, if sent by mail, is effective when deposited in the mail properly addressed with postage prepaid. The written notice of cancellation need not take any particular form and, however expressed, it is effective if it shows that you no longer wish to be bound by this Agreement. If you cancel prior to or on the first day of class, or the seventh day after enrollment, which is later, your refund shall be one hundred percent (100%) of the amount paid for institutional charges, less registration fee not to exceed seventy five dollars (\$75), and less any kit supplies such as brooks, material and equipment issued and accepted by you. Note: Kit supplies are not returnable due to sanitary reasons. Therefore, once you accepted the kit supplies, the cost will be charged to your account. If you cancel this Agreement, The School will refund any money paid by you, less registration fee, kit supplies costs, and STRF (Student Tuition Recovery Fund) within 30 days after notice of cancellation is received by the School.

If you have received federal student financial aid funds, you are entitled to a refund of moneys not paid from federal student financial aid program funds.

If you obtained a loan to pay for an educational program, you will have the responsibility to repay the full amount of the loan plus interest, less the amount of any refund.



ACADEMY OF BEAUTY
LA's Best Kept Secret

3834 MAIN STREET
CULVER CITY, CALIFORNIA 90232
(310) 837-0411
www.TheAcademy.LA

SCHOOL PERFORMANCE FACT SHEET
CALENDAR YEARS OF 2018 & 2019

Manicure – 400 Hours

On-time Completion Rates

(Includes data for the two calendar years prior to reporting)

Calendar Year	Number of Students Who Began Program	Students Available for Graduation	Number of On-time Graduates	Completion Rate
2018	0	0	0	0
2019	0	0	0	0

Student's Initials: _____ Date: _____

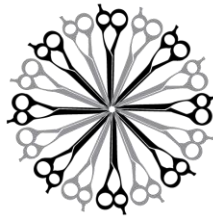
Initial only after you have had sufficient time to read and understand the information

Students Completing Within 150% of the Published Program Length

Calendar Year	Number of Students Who Began Program	Students Available for Graduation	150% Graduates	150% Completion Rate
2018	0	0	0	0
2019	0	0	0	0

Student's Initials: _____ Date: _____

Initial only after you have had sufficient time to read and understand the information



ACADEMY OF BEAUTY
LA's Best Kept Secret

3834 MAIN STREET
CULVER CITY, CALIFORNIA 90232
(310) 837-0411
www.TheAcademy.LA

Job Placement Rates

(Includes data for the tow calendar years prior to reporting)

Calendar Year	Number of Students Who Began Program	Number of Graduates	Graduates Available for Employment	Graduates Employed in the Field	Placement Rate Employed in the Field
2018	0	0	0	0	0
2019	0	0	0	0	0

You may obtain from the institution a list of the employment positions determined to be in the field for which a student received education and training. To obtain this list, please contact director Tim Nguyen at (310) 837-0411 or timnguyen114@msn.com

Gainful Employment Categories

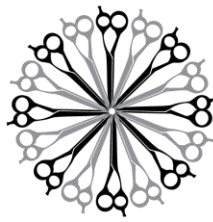
(Includes data for the tow calendar years prior to reporting)

Part Time vs. Full time Employment

Calendar Year	Graduates Employed in the Field 20 to 29 hours per week	Graduates Employed in the Field at least 30 hours per week	Total Graduates Employed in the Field
2018	0	0	0
2019	0	0	0

Single Position vs. Concurrent Aggregated Positions

Calendar Year	Graduates Employed in the Field in a Single Position	Graduates Employed in the Field in Concurrent Aggregated Positions	Total Graduates Employed in the Field
2018	0	0	0
2019	0	0	0



ACADEMY OF BEAUTY
LA's Best Kept Secret

3834 MAIN STREET
CULVER CITY, CALIFORNIA 90232
(310) 837-0411
www.TheAcademy.LA

Self Employed/Freelance Positions

Calendar Year	Graduates Employed who are Self-Employed or Working Freelance	Total Graduates Employed in the Field
2018	0	0
2019	0	0

Institutional Employment

Calendar Year	Graduates Employed in the Field who are Employed by the Institution, an Employer Owned by the Institution, or an Employer who Shares Ownership with the Institution	Total Graduates Employed in the Field
2018	0	0
2019	0	0

Student's Initials: _____ Date: _____

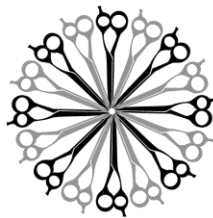
Initial only after you have had sufficient time to read and understand the information

This program may result in freelance or self-employment

- The work available to graduates of this program is usually for freelance or self-employment
- This type of work may not be consistent
- The period of employment can range from one day to weeks to several months
- Hours worked in a day or week may be more or less than the traditional 8 hours work day or 40 hours work week
- You can expect to spend unpaid time expanding your networks, advertising, promoting your services, or honing your skills.
- Once graduates begin to work freelance or are self-employed, they will be asked to provide documentation that they are employed as such so that they may be counted as placed for our job placement records
- Students initialing this disclosure understand that either a majority or all of this school's graduates are employed in this manner and understand what comprises this work style.

Student's Initials: _____ Date: _____

Initial only after you have had sufficient time to read and understand the information



ACADEMY OF BEAUTY
LA's Best Kept Secret

3834 MAIN STREET
CULVER CITY, CALIFORNIA 90232
(310) 837-0411
www.TheAcademy.LA

License Examination Passage Rate

(Includes data for the two calendar years prior to reporting)

Calendar Year	Number of Graduates in Calendar Year	Number of Graduates Taking Exam	Number Who Passed First Available Exam	Number Who Failed First Available Exam	Passage Rate
2018	0	0	0	0	0
2019	0	0	0	0	0

Licensure examination passage data is not available from the state agency administering the examination. We are unable to collect data from 0 graduates.

Student's Initials: _____ Date: _____
Initial only after you have had sufficient time to read and understand the information

Salary and Wage Information

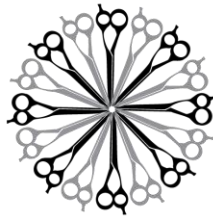
(Includes data for the two calendar years prior to reporting)

Annual Salary Wages Reported for Graduates Employed in the Field

Calendar Year	Graduates Available for Employment	Graduates Employed in the Field	Annual Salary and Wages Reported Graduates Employed in the Field					
			15,000-20,000	20,001-25,000	25,001-30,000	30,001-35,000	35,001-40,000	No Salary Information Reported
2018	0	0	0	0	0	0	0	0
2019	0	0	0	0	0	0	0	0

A list of sources used to substantiate salary disclosures is available from the school. To obtain this list, please ask an institutional representative where to view this list.

Student's Initials: _____ Date: _____
Initial only after you have had sufficient time to read and understand the information



ACADEMY OF BEAUTY
LA's Best Kept Secret

3834 MAIN STREET
CULVER CITY, CALIFORNIA 90232
(310) 837-0411
www.TheAcademy.LA

Cost of Educational Program

Total charges for the program for students completing on-time in 2018: \$5,075

Total charges may be higher for students that do not complete on-time.

Total charges for the program for students completing on-time in 2019: \$5,075

Total charges may be higher for students that do not complete on-time.

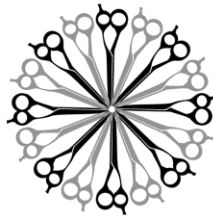
Student's Initials: _____ Date: _____

**Initial only after you have had sufficient time
to read and understand the information**

Students at Academy of Beauty are not eligible for federal student loans. This institution does not meet the U.S. Department of Education criteria that would allow its students to participate in federal student aid programs. Academy of Beauty is eligible, but chooses not to participate in federal student aid programs. Therefore, students who attend this institution do not have federal student loans.

Student's Initials: _____ Date: _____

**Initial only after you have had sufficient time
to read and understand the information**



ACADEMY OF BEAUTY
LA's Best Kept Secret

3834 MAIN STREET
CULVER CITY, CALIFORNIA 90232
(310) 837-0411
www.TheAcademy.LA

This fact sheet is filed with the Bureau for Private Postsecondary Education. Regardless of any information you may have relating to completion rates, placement rates, starting salaries, or license exam passage rates, this fact sheet contains the information as calculated pursuant to state law.

Any questions a student may have regarding this fact sheet that have not been satisfactorily answered by the institution may be directed to the

Bureau for Private Postsecondary Education at:
1747 N. Market Blvd, Suite 225
Sacramento, CA 95834,
www.bppe.ca.gov,
toll-free telephone number (888) 370-7589
or by fax (916) 263-1897

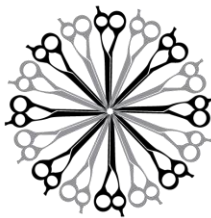
Student Name – Print

Student Signature

Date

School Official

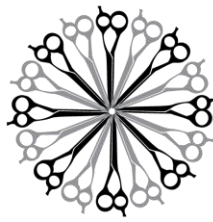
Date



Definitions

The following are definitions for the Performance Fact Sheet:

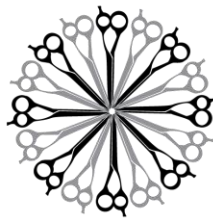
- “Number of Students Who Began the Program” means the number of students who began the program who are scheduled to complete the program within 100% of the published program length within the reporting calendar year and excludes all students who cancelled during the cancellation period.
- “Students Available for Graduation” is the number of students who began program minus the number of students who have died, been incarcerated, or called to active military duty.
- “Number of On-time Graduates” is the number of students who completed the program within 100% of the published program length within the reporting calendar year.
- “On-time Completion Rate” is the number of On-time Graduates divided by the number of Students Available for Graduation.
- “150% Graduates” is the number of students who completed the program within 150% of the program length (includes on-time graduates).
- “150% Completion Rate” is the number of students who completed the program in the reported calendar year within 150% of the published program length, including on-time graduates, divided by the number of students available for graduation.
- “Graduates Available for Employment” means the number of graduates minus the number of graduates unavailable for employment
- “Graduates Unavailable for Employment” means graduates who, after graduation, die, become incarcerated, are called to active military duty, are international students that leave the United States, or are continuing their education in an accredited or bureau-approved postsecondary institution.



ACADEMY OF BEAUTY
LA's Best Kept Secret

3834 MAIN STREET
CULVER CITY, CALIFORNIA 90232
(310) 837-0411
www.TheAcademy.LA

-
- “Graduates Employed in the Field” means graduates who beginning within six months after a student completes the applicable education program are gainfully employed, whose employment has been reported, and for whom the institution has documented certification of employment. For occupations for which the state requires passing an examination, the six months period begins after the announcement of the examination results for the first examinations available after a student completes an applicable educational program.
 - “Placement Rate Employed in the Field” is calculated by dividing the number of graduates gainfully employed in the field by the number of graduates available for employment.
 - “Number of Graduates Taking Exam” is the number of graduates who took the first available exam in the reported calendar year.
 - “First Available Exam Date” is the date for the first available exam after a student completed a program
 - “Passage Rate” is calculated by dividing the number of graduates who passed the exam by the number of graduates of graduates who took the reported licensing exam.
 - “Number Who Passed the First Available Exam” is the number of graduates who took and passed the first available licensing exam after completing the program.
 - “Salary” is as reported by graduates or graduate’s employer
 - “No Salary Information Reported” is the number of graduates for whom, after making reasonable attempts, the school was not able to obtain salary information.



ACADEMY OF BEAUTY
LA's Best Kept Secret

3834 MAIN STREET
CULVER CITY, CALIFORNIA 90232
(310) 837-0411
www.TheAcademy.LA

STUDENT'S RIGHT TO CANCEL

You have the right to cancel this agreement for a course of instruction offered in this agreement, without any penalty or obligation, if notice of cancellation is made prior to or until midnight of the first day of class, or the seventh day after enrollment, whichever is later. Students who withdraw after the cancellation period, up until 60% of the course completion, are entitled to a pro rata refund of tuition. Cancellation shall occur when you give written notice of cancellation at the address of the School, 3834 Main Street Culver City, CA 90232, and to the attention of the School Director. Your notice of cancellation can be by mail, electronic mail, hand delivery, or facsimile. The written notice of cancellation, if sent by mail, is effective when deposited in the mail properly addressed with postage prepaid. The written notice of cancellation need not take any particular form and, however expressed, it is effective if it shows that you no longer wish to be bound by this Agreement. If you cancel prior to or on the first day of class, or the seventh day after enrollment, which is later, your refund shall be one hundred percent (100%) of the amount paid for institutional charges, less registration fee not to exceed seventy five dollars (\$75), and less any kit supplies such as brooks, material and equipment issued and accepted by you. Note: Kit supplies are not returnable due to sanitary reasons. Therefore, once you accepted the kit supplies, the cost will be charged to your account. If you cancel this Agreement, The School will refund any money paid by you, less registration fee, kit supplies costs, and STRF (Student Tuition Recovery Fund) within 30 days after notice of cancellation is received by the School.

If you have received federal student financial aid funds, you are entitled to a refund of moneys not paid from federal student financial aid program funds.

If you obtained a loan to pay for an educational program, you will have the responsibility to repay the full amount of the loan plus interest, less the amount of any refund.