



CINEMAMAKEUPSCHOOL

3780 Wilshire Blvd. Suite 202 Los Angeles, CA 90010

213.368.1234 | cinemamakeup.com

School Performance Fact Sheet

Calendar Years 2022 & 2023

Complete Track – 28 weeks/1030 clock hours

On-Time Completion Rates (Graduation Rates)

Includes data for the two calendar years prior to reporting.

Calendar Year	Number of Students Who Began the Program	Students Available for Graduation	Number of On-Time Graduates	On-Time Completion Rate
2022	53	71	71	100%
2023	45	54	54	100%

Student's Initials: _____ Date: _____

Initial only after you have had sufficient time to read and understand the information.

Job Placement Rates

Includes data for the two calendar years prior to reporting.

Calendar Year	Number of Students Who Began the Program	Number of Graduates	Graduates Available for Employment	Graduates Employed in the Field	Placement Rate Employed in the Field
2022	53	71	71	10	14%
2023	45	54	54	8	14.8%

You may obtain a list of the employment positions determined to be in the field for which a student received education and training. Please ask an institutional representative how you can review the list.

Gainfully Employed Categories

Includes data for the two calendar years prior to reporting.

Part-Time vs. Full-Time Employment

Calendar Year	Graduates Employed in the Field 20-29 hours per week	Graduates Employed in the Field at least 30 hours per week	Total Graduates Employed in the Field
2022	5	5	10
2023	5	3	8

Single Position vs. Concurrent Aggregated Position

Calendar Year	Graduates Employed in the Field in a Single Position	Graduates Employed in the Field in Concurrent Aggregated Positions	Total Graduates Employed in the Field



CINEMAMAKEUPSCHOOL

3780 Wilshire Blvd. Suite 202 Los Angeles, CA 90010
213.368.1234 | cinemamakeup.com

2022	5	5	10
2023	2	6	8

Self Employed – Freelance Positions

Calendar Year	Graduates Employed who are Self Employed or working Freelance	Total Graduates Employed in the Field
2022	5	5
2023	8	8

Institutional Employment

Calendar Year	Graduates Employed in the Field who are Employed by the Institution, an Employer Owned by the Institution, or an Employer who Shares Ownership with the Institution.	Total Graduates Employed in the Field
2022	1	1
2023	0	0

Student's Initials: _____ **Date:** _____

Initial only after you have had sufficient time to read and understand the information.

This program may result in freelance or self-employment.

- The work available to graduates of this program is usually for freelance or self-employment.
- This type of work may not be consistent.
- The period of employment can range from one day to weeks to several months.
- Hours worked in a day or week may be more or less than the traditional eight-hour workday or 40 hour work week.
- You can expect to spend unpaid time expanding your network, advertising, promoting your services, or honing your skills.
- Once graduates begin to work freelance or are self-employed, they will be asked to provide documentation that they are employed as such so that they may be counted as placed for our job placement records.
- Students initialing this disclosure understand that either a majority or all of this school's graduates are employed in this manner and understand what comprises this work style.

Student's Initials: _____ **Date:** _____

Initial only after you have had sufficient time to read and understand the information.



CINEMAMAKEUPSCHOOL

3780 Wilshire Blvd. Suite 202 Los Angeles, CA 90010

213.368.1234 | cinemamakeup.com

License Examination Passage Rates

Includes data for the two calendar years prior to reporting.

Calendar Year	Number of Students Taking Exam	Number Who Passed First Exam Taken	Number Who Failed First Exam Taken	Passage Rate
2022	N/A	N/A	N/A	N/A
2023	N/A	N/A	N/A	N/A

Student's Initials: _____ Date: _____

Initial only after you have had sufficient time to read and understand the information.

Salary and Wage Information

Includes data for the two calendar years prior to reporting.

Annual salary and wages reported for graduates employed in the field.

Calendar Year	Graduates Available for Employment	Graduates Employed in Field	Annual Salary and Wages Reported Graduates Employed in the Field					
			\$0-\$500 0	\$5001-\$1000 0	\$10001-\$15000 0	\$30001-\$35000 0	\$55001-\$60000 0	Students not Reporting Salary
2022	71	10	0	0	0	0	0	10
2023	54	8	0	0	0	0	0	8

A list of sources used to substantiate salary disclosures is available from the school. To obtain this list, please ask an institutional representative.

Student's Initials: _____ Date: _____

Initial only after you have had sufficient time to read and understand the information.

Cost of Educational Program:

Total charges for the program for students completing on time in 2023: \$31,020.

Total charges may be higher for students that do not complete on time.

Total charges for the program for students completing on time in 2022: \$31,020.

Total charges may be higher for students that do not complete on time.

Student's Initials: _____ Date: _____

Initial only after you have had sufficient time to read and understand the information.

Federal Student Loan Debt

Students at Cinema Makeup School are not eligible for federal student loans. This institution does not meet the U.S. Department of Education criteria that would allow its students to participate in federal student aid programs.

Student's Initials: _____ Date: _____



CINEMAMAKEUPSCHOOL

3780 Wilshire Blvd. Suite 202 Los Angeles, CA 90010
213.368.1234 | cinemamakeup.com

Initial only after you have had sufficient time to read and understand the information.

This fact sheet is filed with the Bureau for Private Postsecondary Education. Regardless of any information you may have relating to completion rates, placement rates, starting salaries, or license exam passage rates, this fact sheet contains the information as calculated pursuant to state law.

Any questions a student may have regarding this fact sheet that have not been satisfactorily answered by the institution may be directed to the Bureau for Private Postsecondary Education at 1747 N. Market Blvd, Suite 225, Sacramento, CA 95834, www.bppe.ca.gov, toll-free telephone number (888) 370-7589 or by fax (916) 263-1897.

Student Name – Print

Student Signature

Date

School Official

Date



CINEMAMAKEUP SCHOOL

3780 Wilshire Blvd. Suite 202 Los Angeles, CA 90010

213.368.1234 | cinemamakeup.com

Definitions

- “Number of Students Who Began the Program” means the number of students who began a program who were scheduled to complete the program within 100% of the published program length within the reporting calendar year and excludes all students who cancelled during the cancellation period.
- “Students Available for Graduation” is the number of students who began the program minus the number of students who have died, been incarcerated, or been called to active military duty.
- “Number of On-time Graduates” is the number of students who completed the program within 100% of the published program length within the reporting calendar year.
- “On-time Completion Rate” is the number of on-time graduates divided by the number of students available for graduation.
- “150% Graduates” is the number of students who completed the program within 150% of the program length (includes on-time graduates)
- “150% Completion Rate” is the number of students who completed the program in the reported calendar year within 150% of the published program length, including on-time graduates, divided by the number of students available for graduation.
- “Graduates Available for Employment” means the number of graduates minus the number of graduates unavailable for employment.
- “Graduates Unavailable for Employment” means the graduates who, after graduation, die, become incarcerated, are called to active military duty, are international students that leave the United States or do not have a visa allowing employment in the United States, or are continuing their education in an accredited or bureau-approved postsecondary institution.
- “Graduates Employed in the Field” means graduates who beginning within six months after a student completes the applicable educational program are gainfully employed, whose employment has been reported, and for whom the institution has documented verification of employment.
- “Placement Rate Employed in the Field” is calculated by dividing the number of graduates gainfully employed in the field by the number of graduates available for employment.
- “Number of Graduates Taking Exam” is the number of graduates who took the first available exam in the reported calendar year.
- “First Available Exam Date” is the date for the first available exam after a student completed a program.
- “Passage Rate” is calculated by dividing the number of graduates who took and passed the first available licensing exam after completing the program.
- “Number Who Passed First Available Exam” is the number of graduates who took and passed the first available licensing exam after completing the program.
- “Salary” is as reported by graduate or graduate’s employer.
- “No Salary Information Reported” is the number of graduates whom, after making reasonable attempts, the school was not able to obtain salary information.



CINEMAMA MAKEUP SCHOOL

3780 Wilshire Blvd. Suite 202 Los Angeles, CA 90010

213.368.1234 | cinemamakeup.com

STUDENT'S RIGHT TO CANCEL

1. The student has the right to cancel the Enrollment Agreement and obtain a refund of charges paid through attendance of the first class session or the seventh day after enrollment, whichever is later. Cancellation occurs when you give written Notice of Cancellation at School address shown on the top page of this Agreement. You can do this by mail, in person, by fax or telegram to the director of the School. This Notice of Cancellation, if mailed, is effective by postmarked date. This Notice need not take any particular form, it needs only to state you wish to cancel the Agreement. If you cancel this Agreement, School will refund any money that you paid (minus registration and cancellation fee, if applicable) within 45 days after your Notice is received.
2. Once purchased and in the student's possession, there is no refund for text materials such as books and manuals. Specifically, a student may not return a Student Makeup Kit once he/she takes possession of it due to health and sanitation reason.
3. You have the right to withdraw from School at any time. If you withdraw from the course of instruction after the Cancellation Period as in Par. 1, School will retain STRF fee paid and remit a refund less a registration fee, (not to exceed \$250) within 45 days following your withdrawal. You are obligated to pay only for educational services rendered and unreturned equipment up to 60% of the course or period of enrollment. After you complete 60% of the course or period of enrollment, there is no refund. The refund shall be the amount you paid for instruction multiplied by a fraction, the numerator of which is the number of hours of instruction which you have not received, but for which you have paid, the denominator of which is the total number of hours of instruction for which you have paid. Due to sanitation concerns, makeup kit costs cannot be refunded unless the student cancels his/her enrollment prior to being issued his/her materials on the first day of class. If the amount you have paid is more than the amount that you owe, then a refund will be made within 45 days of withdrawal. If the amount you owe is more than the amount that you paid, then you will have to make arrangements to pay it.
4. For the purpose of determining the amount you owe, you shall be deemed to have withdrawn from the course when any of the following occurs: (a) you notify the School of your withdrawal or the actual date of withdrawal; (b) School terminates your enrollment; (c) you fail to attend classes for a three-week period; (d) you fail to return from a leave of absence. In this case, the date of withdrawal shall be deemed to be the last date of recorded attendance.
5. If any portion of your tuition was paid from loan proceeds, any refund due will be sent to the lender or applicable agency. Any remaining refund amount will first be used to repay any student financial assistance programs from which you received benefits, to the extent of benefits received. Any remaining amount will be paid to the student's financier.



CINEMAMAKEUPSCHOOL

3780 Wilshire Blvd. Suite 202 Los Angeles, CA 90010

213.368.1234 | cinemamakeup.com

School Performance Fact Sheet Calendar Years 2022 & 2023 FX Track – 25 weeks/910 clock hours

On-Time Completion Rates (Graduation Rates)

Includes data for the two calendar years prior to reporting.

Calendar Year	Number of Students Who Began the Program	Students Available for Graduation	Number of On-Time Graduates	On-Time Completion Rate
2022	12	13	13	100%
2023	11	11	11	100%

Student's Initials: _____ Date: _____

Initial only after you have had sufficient time to read and understand the information.

Job Placement Rates

Includes data for the two calendar years prior to reporting.

Calendar Year	Number of Students Who Began the Program	Number of Graduates	Graduates Available for Employment	Graduates Employed in the Field	Placement Rate Employed in the Field
2022	12	13	13	1	8%
2023	11	11	11	1	9%

You may obtain a list of the employment positions determined to be in the field for which a student received education and training. Please ask an institutional representative how you can review the list.

Gainfully Employed Categories

Includes data for the two calendar years prior to reporting.

Part-Time vs. Full-Time Employment

Calendar Year	Graduates Employed in the Field 20-29 hours per week	Graduates Employed in the Field at least 30 hours per week	Total Graduates Employed in the Field
2022	0	1	1
2023	1	0	1

Single Position vs. Concurrent Aggregated Position

Calendar Year	Graduates Employed in the Field in a Single Position	Graduates Employed in the Field in Concurrent Aggregated Positions	Total Graduates Employed in the Field



CINEMAMAKEUP SCHOOL

3780 Wilshire Blvd. Suite 202 Los Angeles, CA 90010

213.368.1234 | cinemamakeup.com

2022	1	0	1
2023	0	1	1

Self Employed – Freelance Positions

Calendar Year	Graduates Employed who are Self Employed or working Freelance	Total Graduates Employed in the Field
2022	0	1
2023	0	1

Institutional Employment

Calendar Year	Graduates Employed in the Field who are Employed by the Institution, an Employer Owned by the Institution, or an Employer who Shares Ownership with the Institution.	Total Graduates Employed in the Field
2022	0	0
2023	0	1

Student's Initials: _____ **Date:** _____

Initial only after you have had sufficient time to read and understand the information.

This program may result in freelance or self employment.

- The work available to graduates of this program is usually for freelance or self employment.
- This type of work may not be consistent.
- The period of employment can range from one day to weeks to several months.
- Hours worked in a day or week may be more or less than the traditional eight hour work day or 40 hour work week.
- You can expect to spend unpaid time expanding your network, advertising, promoting your services, or honing your skills.
- Once graduates begin to work freelance or are self employed they will be asked to provide documentation that they are employed as such so that they may be counted as placed for our job placement records.
- Students initialing this disclosure understand that either a majority or all of this school's graduates are employed in this manner and understand what comprises this work style.

Student's Initials: _____ **Date:** _____

Initial only after you have had sufficient time to read and understand the information.



CINEMAMAKEUPSCHOOL

3780 Wilshire Blvd. Suite 202 Los Angeles, CA 90010

213.368.1234 | cinemamakeup.com

License Examination Passage Rates

Includes data for the two calendar years prior to reporting.

Calendar Year	Number of Students Taking Exam	Number Who Passed First Exam Taken	Number Who Failed First Exam Taken	Passage Rate
2022	N/A	N/A	N/A	N/A
2023	N/A	N/A	N/A	N/A

Student's Initials: _____ Date: _____

Initial only after you have had sufficient time to read and understand the information.

Salary and Wage Information

Includes data for the two calendar years prior to reporting.

Annual salary and wages reported for graduates employed in the field.

Calendar Year	Graduates Available for Employment	Graduates Employed in Field	Annual Salary and Wages Reported Graduates Employed in the Field						Students not Reporting Salary
			\$0-\$500 0	\$5001-\$1000 0	\$10001-\$15000 -	\$15001-\$20000 -	\$30001-\$35000 -		
2022	13	1	0	1	0	0	0		0
2023	11	1	0	0	0	1	0		6

A list of sources used to substantiate salary disclosures is available from the school. To obtain this list, please ask an institutional representative.

Student's Initials: _____ Date: _____

Initial only after you have had sufficient time to read and understand the information.

Cost of Educational Program:

Total charges for the program for students completing on time in 2023: \$27,702.50.

Total charges may be higher for students that do not complete on time.

Total charges for the program for students completing on time in 2022: \$27,702.50.

Total charges may be higher for students that do not complete on time.

Student's Initials: _____ Date: _____

Initial only after you have had sufficient time to read and understand the information.

Federal Student Loan Debt

Students at Cinema Makeup School are not eligible for federal student loans. This institution does not meet the U.S. Department of Education criteria that would allow its students to participate in federal student aid programs.

Student's Initials: _____ Date: _____



CINEMAMAKEUPSCHOOL

3780 Wilshire Blvd. Suite 202 Los Angeles, CA 90010
213.368.1234 | cinemamakeup.com

Initial only after you have had sufficient time to read and understand the information.

This fact sheet is filed with the Bureau for Private Postsecondary Education. Regardless of any information you may have relating to completion rates, placement rates, starting salaries, or license exam passage rates, this fact sheet contains the information as calculated pursuant to state law.

Any questions a student may have regarding this fact sheet that have not been satisfactorily answered by the institution may be directed to the Bureau for Private Postsecondary Education at 1747 N. Market Blvd, Suite 225, Sacramento, CA 95834, www.bppe.ca.gov, toll-free telephone number (888) 370-7589 or by fax (916) 263-1897.

Student Name – Print

Student Signature

Date

School Official

Date



CINEMAMAKEUP SCHOOL

3780 Wilshire Blvd. Suite 202 Los Angeles, CA 90010

213.368.1234 | cinemamakeup.com

Definitions

- “Number of Students Who Began the Program” means the number of students who began a program who were scheduled to complete the program within 100% of the published program length within the reporting calendar year and excludes all students who cancelled during the cancellation period.
- “Students Available for Graduation” is the number of students who began the program minus the number of students who have died, been incarcerated, or been called to active military duty.
- “Number of On-time Graduates” is the number of students who completed the program within 100% of the published program length within the reporting calendar year.
- “On-time Completion Rate” is the number of on-time graduates divided by the number of students available for graduation.
- “150% Graduates” is the number of students who completed the program within 150% of the program length (includes on-time graduates)
- “150% Completion Rate” is the number of students who completed the program in the reported calendar year within 150% of the published program length, including on-time graduates, divided by the number of students available for graduation.
- “Graduates Available for Employment” means the number of graduates minus the number of graduates unavailable for employment.
- “Graduates Unavailable for Employment” means the graduates who, after graduation, die, become incarcerated, are called to active military duty, are international students that leave the United States or do not have a visa allowing employment in the United States, or are continuing their education in an accredited or bureau-approved postsecondary institution.
- “Graduates Employed in the Field” means graduates who beginning within six months after a student completes the applicable educational program are gainfully employed, whose employment has been reported, and for whom the institution has documented verification of employment.
- “Placement Rate Employed in the Field” is calculated by dividing the number of graduates gainfully employed in the field by the number of graduates available for employment.
- “Number of Graduates Taking Exam” is the number of graduates who took the first available exam in the reported calendar year.
- “First Available Exam Date” is the date for the first available exam after a student completed a program.
- “Passage Rate” is calculated by dividing the number of graduates who took and passed the first available licensing exam after completing the program.
- “Number Who Passed First Available Exam” is the number of graduates who took and passed the first available licensing exam after completing the program.
- “Salary” is as reported by graduate or graduate’s employer.
- “No Salary Information Reported” is the number of graduates whom, after making reasonable attempts, the school was not able to obtain salary information.



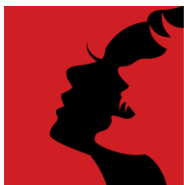
CINEMAMA MAKEUP SCHOOL

3780 Wilshire Blvd. Suite 202 Los Angeles, CA 90010

213.368.1234 | cinemamakeup.com

STUDENT'S RIGHT TO CANCEL

6. The student has the right to cancel the Enrollment Agreement and obtain a refund of charges paid through attendance of the first class session or the seventh day after enrollment, whichever is later. Cancellation occurs when you give written Notice of Cancellation at School address shown on the top page of this Agreement. You can do this by mail, in person, by fax or telegram to the director of the School. This Notice of Cancellation, if mailed, is effective by postmarked date. This Notice need not take any particular form, it needs only to state you wish to cancel the Agreement. If you cancel this Agreement, School will refund any money that you paid (minus registration and cancellation fee, if applicable) within 45 days after your Notice is received.
7. Once purchased and in the student's possession, there is no refund for text materials such as books and manuals. Specifically, a student may not return a Student Makeup Kit once he/she takes possession of it due to health and sanitation reason.
8. You have the right to withdraw from School at any time. If you withdraw from the course of instruction after the Cancellation Period as in Par. 1, School will retain STRF fee paid and remit a refund less a registration fee, (not to exceed \$250) within 45 days following your withdrawal. You are obligated to pay only for educational services rendered and unreturned equipment up to 60% of the course or period of enrollment. After you complete 60% of the course or period of enrollment, there is no refund. The refund shall be the amount you paid for instruction multiplied by a fraction, the numerator of which is the number of hours of instruction which you have not received, but for which you have paid, the denominator of which is the total number of hours of instruction for which you have paid. Due to sanitation concerns, makeup kit costs cannot be refunded unless the student cancels his/her enrollment prior to being issued his/her materials on the first day of class. If the amount you have paid is more than the amount that you owe, then a refund will be made within 45 days of withdrawal. If the amount you owe is more than the amount that you paid, then you will have to make arrangements to pay it.
9. For the purpose of determining the amount you owe, you shall be deemed to have withdrawn from the course when any of the following occurs: (a) you notify the School of your withdrawal or the actual date of withdrawal; (b) School terminates your enrollment; (c) you fail to attend classes for a three-week period; (d) you fail to return from a leave of absence. In this case, the date of withdrawal shall be deemed to be the last date of recorded attendance.
10. If any portion of your tuition was paid from loan proceeds, any refund due will be sent to the lender or applicable agency. Any remaining refund amount will first be used to repay any student financial assistance programs from which you received benefits, to the extent of benefits received. Any remaining amount will be paid to the student's financier.



CINEMAMAKEUP SCHOOL

3780 Wilshire Blvd. Suite 202 Los Angeles, CA 90010
213.368.1234 | cinemamakeup.com

School Performance Fact Sheet

Calendar Years 2022 & 2023

Master Makeup – 18 weeks/630 clock hours

On-Time Completion Rates (Graduation Rates)

Includes data for the two calendar years prior to reporting.

Calendar Year	Number of Students Who Began the Program	Students Available for Graduation	Number of On-Time Graduates	On-Time Completion Rate
2022	28	27	27	100%
2023	15	19	19	100%

Student's Initials: _____ Date: _____

Initial only after you have had sufficient time to read and understand the information.

Job Placement Rates

Includes data for the two calendar years prior to reporting.

Calendar Year	Number of Students Who Began the Program	Number of Graduates	Graduates Available for Employment	Graduates Employed in the Field	Placement Rate Employed in the Field
2022	28	27	27	5	19%
2023	15	19	19	2	10%

You may obtain a list of the employment positions determined to be in the field for which a student received education and training. Please ask an institutional representative how you can review the list.

Gainfully Employed Categories

Includes data for the two calendar years prior to reporting.

Part-Time vs. Full-Time Employment

Calendar Year	Graduates Employed in the Field 20-29 hours per week	Graduates Employed in the Field at least 30 hours per week	Total Graduates Employed in the Field
2022	4	1	5
2023	2	0	2

Single Position vs. Concurrent Aggregated Position

Calendar Year	Graduates Employed in the Field in a Single Position	Graduates Employed in the Field in Concurrent Aggregated Positions	Total Graduates Employed in the Field



CINEMAMAKEUP SCHOOL

3780 Wilshire Blvd. Suite 202 Los Angeles, CA 90010

213.368.1234 | cinemamakeup.com

2022	5	0	5
2023	2	0	2

Self Employed – Freelance Positions

Calendar Year	Graduates Employed who are Self Employed or working Freelance	Total Graduates Employed in the Field
2022	4	5
2023	2	2

Institutional Employment

Calendar Year	Graduates Employed in the Field who are Employed by the Institution, an Employer Owned by the Institution, or an Employer who Shares Ownership with the Institution.	Total Graduates Employed in the Field
2022	1	5
2023	0	2

Student's Initials: _____ **Date:** _____

Initial only after you have had sufficient time to read and understand the information.

This program may result in freelance or self employment.

- The work available to graduates of this program is usually for freelance or self employment.
- This type of work may not be consistent.
- The period of employment can range from one day to weeks to several months.
- Hours worked in a day or week may be more or less than the traditional eight hour work day or 40 hour work week.
- You can expect to spend unpaid time expanding your network, advertising, promoting your services, or honing your skills.
- Once graduates begin to work freelance or are self employed they will be asked to provide documentation that they are employed as such so that they may be counted as placed for our job placement records.
- Students initialing this disclosure understand that either a majority or all of this school's graduates are employed in this manner and understand what comprises this work style.

Student's Initials: _____ **Date:** _____

Initial only after you have had sufficient time to read and understand the information.



CINEMAMAKEUPSCHOOL

3780 Wilshire Blvd. Suite 202 Los Angeles, CA 90010
213.368.1234 | cinemamakeup.com

License Examination Passage Rates

Includes data for the two calendar years prior to reporting.

Calendar Year	Number of Students Taking Exam	Number Who Passed First Exam Taken	Number Who Failed First Exam Taken	Passage Rate
2022	N/A	N/A	N/A	N/A
2023	N/A	N/A	N/A	N/A

Student's Initials: _____ Date: _____

Initial only after you have had sufficient time to read and understand the information.

Salary and Wage Information

Includes data for the two calendar years prior to reporting.

Annual salary and wages reported for graduates employed in the field.

Calendar Year	Graduates Available for Employment	Graduates Employed in Field	Annual Salary and Wages Reported Graduates Employed in the Field					
			\$0-\$5000	\$5001-\$10000	\$10001-\$15000	\$35001-\$40000	\$50001-\$55000	Students not Reporting Salary
2022	27	5	1	1	0	1	2	0
2023	19	2	2	0	0	0	0	17

A list of sources used to substantiate salary disclosures is available from the school. To obtain this list, please ask an institutional representative.

Student's Initials: _____ Date: _____

Initial only after you have had sufficient time to read and understand the information.

Cost of Educational Program:

Total charges for the program for students completing on time in 2023: \$17,377.50.

Total charges may be higher for students that do not complete on time.

Total charges for the program for students completing on time in 2022: \$17,377.50.

Total charges may be higher for students that do not complete on time.

Student's Initials: _____ Date: _____

Initial only after you have had sufficient time to read and understand the information.

Federal Student Loan Debt

Students at Cinema Makeup School are not eligible for federal student loans. This institution does not meet the U.S. Department of Education criteria that would allow its students to participate in federal student aid programs.

Student's Initials: _____ Date: _____



CINEMAMAKEUPSCHOOL

3780 Wilshire Blvd. Suite 202 Los Angeles, CA 90010
213.368.1234 | cinemamakeup.com

Initial only after you have had sufficient time to read and understand the information.

This fact sheet is filed with the Bureau for Private Postsecondary Education. Regardless of any information you may have relating to completion rates, placement rates, starting salaries, or license exam passage rates, this fact sheet contains the information as calculated pursuant to state law.

Any questions a student may have regarding this fact sheet that have not been satisfactorily answered by the institution may be directed to the Bureau for Private Postsecondary Education at 1747 N. Market Blvd, Suite 225, Sacramento, CA 95834, www.bppe.ca.gov, toll-free telephone number (888) 370-7589 or by fax (916) 263-1897.

Student Name – Print

Student Signature

Date

School Official

Date



CINEMAMAKEUP SCHOOL

3780 Wilshire Blvd. Suite 202 Los Angeles, CA 90010

213.368.1234 | cinemamakeup.com

Definitions

- “Number of Students Who Began the Program” means the number of students who began a program who were scheduled to complete the program within 100% of the published program length within the reporting calendar year and excludes all students who cancelled during the cancellation period.
- “Students Available for Graduation” is the number of students who began the program minus the number of students who have died, been incarcerated, or been called to active military duty.
- “Number of On-time Graduates” is the number of students who completed the program within 100% of the published program length within the reporting calendar year.
- “On-time Completion Rate” is the number of on-time graduates divided by the number of students available for graduation.
- “150% Graduates” is the number of students who completed the program within 150% of the program length (includes on-time graduates)
- “150% Completion Rate” is the number of students who completed the program in the reported calendar year within 150% of the published program length, including on-time graduates, divided by the number of students available for graduation.
- “Graduates Available for Employment” means the number of graduates minus the number of graduates unavailable for employment.
- “Graduates Unavailable for Employment” means the graduates who, after graduation, die, become incarcerated, are called to active military duty, are international students that leave the United States or do not have a visa allowing employment in the United States, or are continuing their education in an accredited or bureau-approved postsecondary institution.
- “Graduates Employed in the Field” means graduates who beginning within six months after a student completes the applicable educational program are gainfully employed, whose employment has been reported, and for whom the institution has documented verification of employment.
- “Placement Rate Employed in the Field” is calculated by dividing the number of graduates gainfully employed in the field by the number of graduates available for employment.
- “Number of Graduates Taking Exam” is the number of graduates who took the first available exam in the reported calendar year.
- “First Available Exam Date” is the date for the first available exam after a student completed a program.
- “Passage Rate” is calculated by dividing the number of graduates who took and passed the first available licensing exam after completing the program.
- “Number Who Passed First Available Exam” is the number of graduates who took and passed the first available licensing exam after completing the program.
- “Salary” is as reported by graduate or graduate’s employer.
- “No Salary Information Reported” is the number of graduates whom, after making reasonable attempts, the school was not able to obtain salary information.



CINEMAMAKEUP SCHOOL

3780 Wilshire Blvd. Suite 202 Los Angeles, CA 90010

213.368.1234 | cinemamakeup.com

STUDENT'S RIGHT TO CANCEL

11. The student has the right to cancel the Enrollment Agreement and obtain a refund of charges paid through attendance of the first class session or the seventh day after enrollment, whichever is later. Cancellation occurs when you give written Notice of Cancellation at School address shown on the top page of this Agreement. You can do this by mail, in person, by fax or telegram to the director of the School. This Notice of Cancellation, if mailed, is effective by postmarked date. This Notice need not take any particular form, it needs only to state you wish to cancel the Agreement. If you cancel this Agreement, School will refund any money that you paid (minus registration and cancellation fee, if applicable) within 45 days after your Notice is received.
12. Once purchased and in the student's possession, there is no refund for text materials such as books and manuals. Specifically, a student may not return a Student Makeup Kit once he/she takes possession of it due to health and sanitation reason.
13. You have the right to withdraw from School at any time. If you withdraw from the course of instruction after the Cancellation Period as in Par. 1, School will retain STRF fee paid and remit a refund less a registration fee, (not to exceed \$250) within 45 days following your withdrawal. You are obligated to pay only for educational services rendered and unreturned equipment up to 60% of the course or period of enrollment. After you complete 60% of the course or period of enrollment, there is no refund. The refund shall be the amount you paid for instruction multiplied by a fraction, the numerator of which is the number of hours of instruction which you have not received, but for which you have paid, the denominator of which is the total number of hours of instruction for which you have paid. Due to sanitation concerns, makeup kit costs cannot be refunded unless the student cancels his/her enrollment prior to being issued his/her materials on the first day of class. If the amount you have paid is more than the amount that you owe, then a refund will be made within 45 days of withdrawal. If the amount you owe is more than the amount that you paid, then you will have to make arrangements to pay it.
14. For the purpose of determining the amount you owe, you shall be deemed to have withdrawn from the course when any of the following occurs: (a) you notify the School of your withdrawal or the actual date of withdrawal; (b) School terminates your enrollment; (c) you fail to attend classes for a three-week period; (d) you fail to return from a leave of absence. In this case, the date of withdrawal shall be deemed to be the last date of recorded attendance.
15. If any portion of your tuition was paid from loan proceeds, any refund due will be sent to the lender or applicable agency. Any remaining refund amount will first be used to repay any student financial assistance programs from which you received benefits, to the extent of benefits received. Any remaining amount will be paid to the student's financier.



CINEMAMAKEUP SCHOOL

3780 Wilshire Blvd. Suite 202 Los Angeles, CA 90010
213.368.1234 | cinemamakeup.com

School Performance Fact Sheet

Calendar Years 2022 & 2023

High Fashion Photographic Makeup – 6 weeks/210 clock hours

On-Time Completion Rates (Graduation Rates)

Includes data for the two calendar years prior to reporting.

Calendar Year	Number of Students Who Began the Program	Students Available for Graduation	Number of On-Time Graduates	On-Time Completion Rate
2022	7	6	6	100%
2023	7	7	7	100%

Student's Initials: _____ Date: _____

Initial only after you have had sufficient time to read and understand the information.

Job Placement Rates

Includes data for the two calendar years prior to reporting.

Calendar Year	Number of Students Who Began the Program	Number of Graduates	Graduates Available for Employment	Graduates Employed in the Field	Placement Rate Employed in the Field
2022	7	6	6	1	17%
2023	7	7	7	1	14%

You may obtain a list of the employment positions determined to be in the field for which a student received education and training. Please ask an institutional representative how you can review the list.

Gainfully Employed Categories

Includes data for the two calendar years prior to reporting.

Part-Time vs. Full-Time Employment

Calendar Year	Graduates Employed in the Field 20-29 hours per week	Graduates Employed in the Field at least 30 hours per week	Total Graduates Employed in the Field
2022	0	1	1
2023	1	0	1

Single Position vs. Concurrent Aggregated Position

Calendar Year	Graduates Employed in the Field in a Single Position	Graduates Employed in the Field in	Total Graduates Employed in the Field



CINEMAMAKEUP SCHOOL

3780 Wilshire Blvd. Suite 202 Los Angeles, CA 90010
213.368.1234 | cinemamakeup.com

		Concurrent Aggregated Positions	
2022	1	0	1
2023	0	1	1

Self Employed – Freelance Positions

Calendar Year	Graduates Employed who are Self Employed or working Freelance	Total Graduates Employed in the Field
2022	0	0
2023	1	1

Institutional Employment

Calendar Year	Graduates Employed in the Field who are Employed by the Institution, an Employer Owned by the Institution, or an Employer who Shares Ownership with the Institution.	Total Graduates Employed in the Field
2022	0	0
2023	0	1

Student's Initials: _____ **Date:** _____

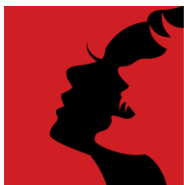
Initial only after you have had sufficient time to read and understand the information.

This program may result in freelance or self-employment.

- The work available to graduates of this program is usually for freelance or self-employment.
- This type of work may not be consistent.
- The period of employment can range from one day to weeks to several months.
- Hours worked in a day or week may be more or less than the traditional eight-hour workday or 40 hour work week.
- You can expect to spend unpaid time expanding your network, advertising, promoting your services, or honing your skills.
- Once graduates begin to work freelance or are self-employed, they will be asked to provide documentation that they are employed as such so that they may be counted as placed for our job placement records.
- Students initialing this disclosure understand that either a majority or all of this school's graduates are employed in this manner and understand what comprises this work style.

Student's Initials: _____ **Date:** _____

Initial only after you have had sufficient time to read and understand the information.



CINEMAMAKEUPSCHOOL

3780 Wilshire Blvd. Suite 202 Los Angeles, CA 90010
213.368.1234 | cinemamakeup.com

License Examination Passage Rates

Includes data for the two calendar years prior to reporting.

Calendar Year	Number of Students Taking Exam	Number Who Passed First Exam Taken	Number Who Failed First Exam Taken	Passage Rate
2022	N/A	N/A	N/A	N/A
2023	N/A	N/A	N/A	N/A

Student's Initials: _____ Date: _____

Initial only after you have had sufficient time to read and understand the information.

Salary and Wage Information

Includes data for the two calendar years prior to reporting.

Annual salary and wages reported for graduates employed in the field.

Calendar Year	Graduates Available for Employment	Graduates Employed in Field	Annual Salary and Wages Reported Graduates Employed in the Field				
			\$0-5000	\$5001-\$10000	\$10001-\$15000	\$15001-\$20000	Students not Reporting Salary
2022	6	1	0	1	0	0	0
2023	7	1	1	0	0	0	6

A list of sources used to substantiate salary disclosures is available from the school. To obtain this list, please ask an institutional representative.

Student's Initials: _____ Date: _____

Initial only after you have had sufficient time to read and understand the information.

Cost of Educational Program:

Total charges for the program for students completing on time in 2023: \$6,432.50.

Total charges may be higher for students that do not complete on time.

Total charges for the program for students completing on time in 2022: \$6,432.50.

Total charges may be higher for students that do not complete on time.

Student's Initials: _____ Date: _____

Initial only after you have had sufficient time to read and understand the information.

Federal Student Loan Debt

Students at Cinema Makeup School are not eligible for federal student loans. This institution does not meet the U.S. Department of Education criteria that would allow its students to participate in federal student aid programs.

Student's Initials: _____ Date: _____

Initial only after you have had sufficient time to read and understand the information.



CINEMAMAKEUPSCHOOL

3780 Wilshire Blvd. Suite 202 Los Angeles, CA 90010
213.368.1234 | cinemamakeup.com

This fact sheet is filed with the Bureau for Private Postsecondary Education. Regardless of any information you may have relating to completion rates, placement rates, starting salaries, or license exam passage rates, this fact sheet contains the information as calculated pursuant to state law.

Any questions a student may have regarding this fact sheet that have not been satisfactorily answered by the institution may be directed to the Bureau for Private Postsecondary Education at 1747 N. Market Blvd, Suite 225, Sacramento, CA 95834, www.bppe.ca.gov, toll-free telephone number (888) 370-7589 or by fax (916) 263-1897.

Student Name – Print

Student Signature

Date

School Official

Date



CINEMAMAKEUP SCHOOL

3780 Wilshire Blvd. Suite 202 Los Angeles, CA 90010

213.368.1234 | cinemamakeup.com

Definitions

- “Number of Students Who Began the Program” means the number of students who began a program who were scheduled to complete the program within 100% of the published program length within the reporting calendar year and excludes all students who cancelled during the cancellation period.
- “Students Available for Graduation” is the number of students who began the program minus the number of students who have died, been incarcerated, or been called to active military duty.
- “Number of On-time Graduates” is the number of students who completed the program within 100% of the published program length within the reporting calendar year.
- “On-time Completion Rate” is the number of on-time graduates divided by the number of students available for graduation.
- “150% Graduates” is the number of students who completed the program within 150% of the program length (includes on-time graduates)
- “150% Completion Rate” is the number of students who completed the program in the reported calendar year within 150% of the published program length, including on-time graduates, divided by the number of students available for graduation.
- “Graduates Available for Employment” means the number of graduates minus the number of graduates unavailable for employment.
- “Graduates Unavailable for Employment” means the graduates who, after graduation, die, become incarcerated, are called to active military duty, are international students that leave the United States or do not have a visa allowing employment in the United States, or are continuing their education in an accredited or bureau-approved postsecondary institution.
- “Graduates Employed in the Field” means graduates who beginning within six months after a student completes the applicable educational program are gainfully employed, whose employment has been reported, and for whom the institution has documented verification of employment.
- “Placement Rate Employed in the Field” is calculated by dividing the number of graduates gainfully employed in the field by the number of graduates available for employment.
- “Number of Graduates Taking Exam” is the number of graduates who took the first available exam in the reported calendar year.
- “First Available Exam Date” is the date for the first available exam after a student completed a program.
- “Passage Rate” is calculated by dividing the number of graduates who took and passed the first available licensing exam after completing the program.
- “Number Who Passed First Available Exam” is the number of graduates who took and passed the first available licensing exam after completing the program.
- “Salary” is as reported by graduate or graduate’s employer.
- “No Salary Information Reported” is the number of graduates whom, after making reasonable attempts, the school was not able to obtain salary information.



CINEMAMA MAKEUP SCHOOL

3780 Wilshire Blvd. Suite 202 Los Angeles, CA 90010

213.368.1234 | cinemamakeup.com

STUDENT'S RIGHT TO CANCEL

16. The student has the right to cancel the Enrollment Agreement and obtain a refund of charges paid through attendance of the first-class session or the seventh day after enrollment, whichever is later. Cancellation occurs when you give written Notice of Cancellation at School address shown on the top page of this Agreement. You can do this by mail, in person, by fax or telegram to the director of the School. This Notice of Cancellation, if mailed, is effective by postmarked date. This Notice need not take any particular form, it needs only to state you wish to cancel the Agreement. If you cancel this Agreement, School will refund any money that you paid (minus registration and cancellation fee, if applicable) within 45 days after your Notice is received.
17. Once purchased and in the student's possession, there is no refund for text materials such as books and manuals. Specifically, a student may not return a Student Makeup Kit once he/she takes possession of it due to health and sanitation reason.
18. You have the right to withdraw from School at any time. If you withdraw from the course of instruction after the Cancellation Period as in Par. 1, School will retain STRF fee paid and remit a refund less a registration fee, (not to exceed \$250) within 45 days following your withdrawal. You are obligated to pay only for educational services rendered and unreturned equipment up to 60% of the course or period of enrollment. After you complete 60% of the course or period of enrollment, there is no refund. The refund shall be the amount you paid for instruction multiplied by a fraction, the numerator of which is the number of hours of instruction which you have not received, but for which you have paid, the denominator of which is the total number of hours of instruction for which you have paid. Due to sanitation concerns, makeup kit costs cannot be refunded unless the student cancels his/her enrollment prior to being issued his/her materials on the first day of class. If the amount you have paid is more than the amount that you owe, then a refund will be made within 45 days of withdrawal. If the amount you owe is more than the amount that you paid, then you will have to make arrangements to pay it.
19. For the purpose of determining the amount you owe, you shall be deemed to have withdrawn from the course when any of the following occurs: (a) you notify the School of your withdrawal or the actual date of withdrawal; (b) School terminates your enrollment; (c) you fail to attend classes for a three-week period; (d) you fail to return from a leave of absence. In this case, the date of withdrawal shall be deemed to be the last date of recorded attendance.
20. If any portion of your tuition was paid from loan proceeds, any refund due will be sent to the lender or applicable agency. Any remaining refund amount will first be used to repay any student financial assistance programs from which you received benefits, to the extent of benefits received. Any remaining amount will be paid to the student's financier.



CINEMAMAKEUPSCHOOL

3780 Wilshire Blvd. Suite 202 Los Angeles, CA 90010

213.368.1234 | cinemamakeup.com

School Performance Fact Sheet

Calendar Years 2022 & 2023

Creature Concept Design – 3 weeks/120 clock hours

On-Time Completion Rates (Graduation Rates)

Includes data for the two calendar years prior to reporting.

Calendar Year	Number of Students Who Began the Program	Students Available for Graduation	Number of On-Time Graduates	On-Time Completion Rate
2022	8	6	6	100%
2023	3	3	3	100%

Student's Initials: _____ Date: _____

Initial only after you have had sufficient time to read and understand the information.

Job Placement Rates

Includes data for the two calendar years prior to reporting.

Calendar Year	Number of Students Who Began the Program	Number of Graduates	Graduates Available for Employment	Graduates Employed in the Field	Placement Rate Employed in the Field
2022	8	6	6	1	17%
2023	3	3	3	0	0%

You may obtain a list of the employment positions determined to be in the field for which a student received education and training. Please ask an institutional representative how you can review the list.

Gainfully Employed Categories

Includes data for the two calendar years prior to reporting.

Part-Time vs. Full-Time Employment

Calendar Year	Graduates Employed in the Field 20-29 hours per week	Graduates Employed in the Field at least 30 hours per week	Total Graduates Employed in the Field
2022	0	1	1
2023	0	0	0

Single Position vs. Concurrent Aggregated Position

Calendar Year	Graduates Employed in the Field in a Single Position	Graduates Employed in the Field in	Total Graduates Employed in the Field



CINEMAMAKEUP SCHOOL

3780 Wilshire Blvd. Suite 202 Los Angeles, CA 90010
213.368.1234 | cinemamakeup.com

		Concurrent Aggregated Positions	
2022	1	0	1
2023	0	0	0

Self Employed – Freelance Positions

Calendar Year	Graduates Employed who are Self Employed or working Freelance	Total Graduates Employed in the Field
2022	0	1
2023	0	0

Institutional Employment

Calendar Year	Graduates Employed in the Field who are Employed by the Institution, an Employer Owned by the Institution, or an Employer who Shares Ownership with the Institution.	Total Graduates Employed in the Field
2022	0	1
2023	0	0

Student's Initials: _____ **Date:** _____

Initial only after you have had sufficient time to read and understand the information.

This program may result in freelance or self employment.

- The work available to graduates of this program is usually for freelance or self employment.
- This type of work may not be consistent.
- The period of employment can range from one day to weeks to several months.
- Hours worked in a day or week may be more or less than the traditional eight hour work day or 40 hour work week.
- You can expect to spend unpaid time expanding your network, advertising, promoting your services, or honing your skills.
- Once graduates begin to work freelance or are self employed they will be asked to provide documentation that they are employed as such so that they may be counted as placed for our job placement records.
- Students initialing this disclosure understand that either a majority or all of this school's graduates are employed in this manner and understand what comprises this work style.

Student's Initials: _____ **Date:** _____

Initial only after you have had sufficient time to read and understand the information.



CINEMAMAKEUPSCHOOL

3780 Wilshire Blvd. Suite 202 Los Angeles, CA 90010
213.368.1234 | cinemamakeup.com

License Examination Passage Rates

Includes data for the two calendar years prior to reporting.

Calendar Year	Number of Students Taking Exam	Number Who Passed First Exam Taken	Number Who Failed First Exam Taken	Passage Rate
2022	N/A	N/A	N/A	N/A
2023	N/A	N/A	N/A	N/A

Student's Initials: _____ Date: _____

Initial only after you have had sufficient time to read and understand the information.

Salary and Wage Information

Includes data for the two calendar years prior to reporting.

Annual salary and wages reported for graduates employed in the field.

Calendar Year	Graduates Available for Employment	Graduates Employed in Field	Annual Salary and Wages Reported Graduates Employed in the Field						Students not Reporting Salary
			\$0-\$500	\$501-\$1000	\$1001-\$15000	\$15001-\$20000	\$20001-\$35000	\$35001-\$50000	
2022	6	1	0	0	0	0	0	0	1
2023	3	0	0	0	0	0	0	0	3

A list of sources used to substantiate salary disclosures is available from the school. To obtain this list, please ask an institutional representative.

Student's Initials: _____ Date: _____

Initial only after you have had sufficient time to read and understand the information.

Cost of Educational Program:

Total charges for the program for students completing on time in 2023: \$3,092.50.

Total charges may be higher for students that do not complete on time.

Total charges for the program for students completing on time in 2022: \$3,092.50.

Total charges may be higher for students that do not complete on time.

Student's Initials: _____ Date: _____

Initial only after you have had sufficient time to read and understand the information.

Federal Student Loan Debt

Students at Cinema Makeup School are not eligible for federal student loans. This institution does not meet the U.S. Department of Education criteria that would allow its students to participate in federal student aid programs.

Student's Initials: _____ Date: _____



CINEMAMAKEUPSCHOOL

3780 Wilshire Blvd. Suite 202 Los Angeles, CA 90010
213.368.1234 | cinemamakeup.com

Initial only after you have had sufficient time to read and understand the information.

This fact sheet is filed with the Bureau for Private Postsecondary Education. Regardless of any information you may have relating to completion rates, placement rates, starting salaries, or license exam passage rates, this fact sheet contains the information as calculated pursuant to state law.

Any questions a student may have regarding this fact sheet that have not been satisfactorily answered by the institution may be directed to the Bureau for Private Postsecondary Education at 1747 N. Market Blvd, Suite 225, Sacramento, CA 95834, www.bppe.ca.gov, toll-free telephone number (888) 370-7589 or by fax (916) 263-1897.

Student Name – Print

Student Signature

Date

School Official

Date



CINEMAMAKEUP SCHOOL

3780 Wilshire Blvd. Suite 202 Los Angeles, CA 90010

213.368.1234 | cinemamakeup.com

Definitions

- “Number of Students Who Began the Program” means the number of students who began a program who were scheduled to complete the program within 100% of the published program length within the reporting calendar year and excludes all students who cancelled during the cancellation period.
- “Students Available for Graduation” is the number of students who began the program minus the number of students who have died, been incarcerated, or been called to active military duty.
- “Number of On-time Graduates” is the number of students who completed the program within 100% of the published program length within the reporting calendar year.
- “On-time Completion Rate” is the number of on-time graduates divided by the number of students available for graduation.
- “150% Graduates” is the number of students who completed the program within 150% of the program length (includes on-time graduates)
- “150% Completion Rate” is the number of students who completed the program in the reported calendar year within 150% of the published program length, including on-time graduates, divided by the number of students available for graduation.
- “Graduates Available for Employment” means the number of graduates minus the number of graduates unavailable for employment.
- “Graduates Unavailable for Employment” means the graduates who, after graduation, die, become incarcerated, are called to active military duty, are international students that leave the United States or do not have a visa allowing employment in the United States, or are continuing their education in an accredited or bureau-approved postsecondary institution.
- “Graduates Employed in the Field” means graduates who beginning within six months after a student completes the applicable educational program are gainfully employed, whose employment has been reported, and for whom the institution has documented verification of employment.
- “Placement Rate Employed in the Field” is calculated by dividing the number of graduates gainfully employed in the field by the number of graduates available for employment.
- “Number of Graduates Taking Exam” is the number of graduates who took the first available exam in the reported calendar year.
- “First Available Exam Date” is the date for the first available exam after a student completed a program.
- “Passage Rate” is calculated by dividing the number of graduates who took and passed the first available licensing exam after completing the program.
- “Number Who Passed First Available Exam” is the number of graduates who took and passed the first available licensing exam after completing the program.
- “Salary” is as reported by graduate or graduate’s employer.
- “No Salary Information Reported” is the number of graduates whom, after making reasonable attempts, the school was not able to obtain salary information.
- “No Salary Information Reported” is the number of graduates whom, after making reasonable attempts, the school was not able to obtain salary information.



CINEMAMA MAKEUP SCHOOL

3780 Wilshire Blvd. Suite 202 Los Angeles, CA 90010

213.368.1234 | cinemamakeup.com

STUDENT'S RIGHT TO CANCEL

21. The student has the right to cancel the Enrollment Agreement and obtain a refund of charges paid through attendance of the first class session or the seventh day after enrollment, whichever is later. Cancellation occurs when you give written Notice of Cancellation at School address shown on the top page of this Agreement. You can do this by mail, in person, by fax or telegram to the director of the School. This Notice of Cancellation, if mailed, is effective by postmarked date. This Notice need not take any particular form, it needs only to state you wish to cancel the Agreement. If you cancel this Agreement, School will refund any money that you paid (minus registration and cancellation fee, if applicable) within 45 days after your Notice is received.
22. Once purchased and in the student's possession, there is no refund for text materials such as books and manuals. Specifically, a student may not return a Student Makeup Kit once he/she takes possession of it due to health and sanitation reason.
23. You have the right to withdraw from School at any time. If you withdraw from the course of instruction after the Cancellation Period as in Par. 1, School will retain STRF fee paid and remit a refund less a registration fee, (not to exceed \$250) within 45 days following your withdrawal. You are obligated to pay only for educational services rendered and unreturned equipment up to 60% of the course or period of enrollment. After you complete 60% of the course or period of enrollment, there is no refund. The refund shall be the amount you paid for instruction multiplied by a fraction, the numerator of which is the number of hours of instruction which you have not received, but for which you have paid, the denominator of which is the total number of hours of instruction for which you have paid. Due to sanitation concerns, makeup kit costs cannot be refunded unless the student cancels his/her enrollment prior to being issued his/her materials on the first day of class. If the amount you have paid is more than the amount that you owe, then a refund will be made within 45 days of withdrawal. If the amount you owe is more than the amount that you paid, then you will have to make arrangements to pay it.
24. For the purpose of determining the amount you owe, you shall be deemed to have withdrawn from the course when any of the following occurs: (a) you notify the School of your withdrawal or the actual date of withdrawal; (b) School terminates your enrollment; (c) you fail to attend classes for a three-week period; (d) you fail to return from a leave of absence. In this case, the date of withdrawal shall be deemed to be the last date of recorded attendance.
25. If any portion of your tuition was paid from loan proceeds, any refund due will be sent to the lender or applicable agency. Any remaining refund amount will first be used to repay any student financial assistance programs from which you received benefits, to the extent of benefits received. Any remaining amount will be paid to the student's financier.



CINEMAMAKEUPSCHOOL

3780 Wilshire Blvd. Suite 202 Los Angeles, CA 90010

213.368.1234 | cinemamakeup.com

School Performance Fact Sheet

Calendar Years 2022 & 2023

Character Makeup – 4 weeks/140 clock hours

On-Time Completion Rates (Graduation Rates)

Includes data for the two calendar years prior to reporting.

Calendar Year	Number of Students Who Began the Program	Students Available for Graduation	Number of On-Time Graduates	On-Time Completion Rate
2022	14	14	14	100%
2023	7	7	7	100%

Student's Initials: _____ Date: _____

Initial only after you have had sufficient time to read and understand the information.

Job Placement Rates

Includes data for the two calendar years prior to reporting.

Calendar Year	Number of Students Who Began the Program	Number of Graduates	Graduates Available for Employment	Graduates Employed in the Field	Placement Rate Employed in the Field
2022	14	14	14	4	30%
2023	7	7	7	0	0%

You may obtain a list of the employment positions determined to be in the field for which a student received education and training. Please ask an institutional representative how you can review the list.

Gainfully Employed Categories

Includes data for the two calendar years prior to reporting.

Part-Time vs. Full-Time Employment

Calendar Year	Graduates Employed in the Field 20-29 hours per week	Graduates Employed in the Field at least 30 hours per week	Total Graduates Employed in the Field
2022	2	2	4
2023	0	0	0

Single Position vs. Concurrent Aggregated Position

Calendar Year	Graduates Employed in the Field in a Single Position	Graduates Employed in the Field in	Total Graduates Employed in the Field
---------------	--	------------------------------------	---------------------------------------



CINEMAMAKEUPSCHOOL

3780 Wilshire Blvd. Suite 202 Los Angeles, CA 90010
213.368.1234 | cinemamakeup.com

		Concurrent Aggregated Positions	
2022	3	1	4
2023	0	0	0

Self Employed – Freelance Positions

Calendar Year	Graduates Employed who are Self Employed or working Freelance	Total Graduates Employed in the Field
2022	4	4
2023	0	0

Institutional Employment

Calendar Year	Graduates Employed in the Field who are Employed by the Institution, an Employer Owned by the Institution, or an Employer who Shares Ownership with the Institution.	Total Graduates Employed in the Field
2022	0	0
2023	0	0

Student's Initials: _____ **Date:** _____

Initial only after you have had sufficient time to read and understand the information.

This program may result in freelance or self-employment.

- The work available to graduates of this program is usually for freelance or self-employment.
- This type of work may not be consistent.
- The period of employment can range from one day to weeks to several months.
- Hours worked in a day or week may be more or less than the traditional eight-hour workday or 40 hour work week.
- You can expect to spend unpaid time expanding your network, advertising, promoting your services, or honing your skills.
- Once graduates begin to work freelance or are self-employed, they will be asked to provide documentation that they are employed as such so that they may be counted as placed for our job placement records.
- Students initialing this disclosure understand that either a majority or all of this school's graduates are employed in this manner and understand what comprises this work style.

Student's Initials: _____ **Date:** _____

Initial only after you have had sufficient time to read and understand the information.



CINEMAMAKEUPSCHOOL

3780 Wilshire Blvd. Suite 202 Los Angeles, CA 90010
213.368.1234 | cinemamakeup.com

License Examination Passage Rates

Includes data for the two calendar years prior to reporting.

Calendar Year	Number of Students Taking Exam	Number Who Passed First Exam Taken	Number Who Failed First Exam Taken	Passage Rate
2022	N/A	N/A	N/A	N/A
2023	N/A	N/A	N/A	N/A

Student's Initials: _____ Date: _____

Initial only after you have had sufficient time to read and understand the information.

Salary and Wage Information

Includes data for the two calendar years prior to reporting.

Annual salary and wages reported for graduates employed in the field.

Calendar Year	Graduates Available for Employment	Graduates Employed in Field	Annual Salary and Wages Reported Graduates Employed in the Field				
			\$0-5000	\$5001-\$10000	\$10001-\$15000	\$35001-\$40000	Students not Reporting Salary
2022	14	4	0	0	0	0	4
2023	7	0	0	0	0	0	7

A list of sources used to substantiate salary disclosures is available from the school. To obtain this list, please ask an institutional representative.

Student's Initials: _____ Date: _____

Initial only after you have had sufficient time to read and understand the information.

Cost of Educational Program:

Total charges for the program for students completing on time in 2023: \$5,100.

Total charges may be higher for students that do not complete on time.

Total charges for the program for students completing on time in 2022: \$5,100.

Total charges may be higher for students that do not complete on time.

Student's Initials: _____ Date: _____

Initial only after you have had sufficient time to read and understand the information.

Federal Student Loan Debt

Students at Cinema Makeup School are not eligible for federal student loans. This institution does not meet the U.S. Department of Education criteria that would allow its students to participate in federal student aid programs.

Student's Initials: _____ Date: _____

Initial only after you have had sufficient time to read and understand the information.



CINEMAMAKEUPSCHOOL

3780 Wilshire Blvd. Suite 202 Los Angeles, CA 90010
213.368.1234 | cinemamakeup.com

This fact sheet is filed with the Bureau for Private Postsecondary Education. Regardless of any information you may have relating to completion rates, placement rates, starting salaries, or license exam passage rates, this fact sheet contains the information as calculated pursuant to state law.

Any questions a student may have regarding this fact sheet that have not been satisfactorily answered by the institution may be directed to the Bureau for Private Postsecondary Education at 1747 N. Market Blvd, Suite 225, Sacramento, CA 95834, www.bppe.ca.gov, toll-free telephone number (888) 370-7589 or by fax (916) 263-1897.

Student Name – Print

Student Signature

Date

School Official

Date



CINEMAMAKEUPSCHOOL

3780 Wilshire Blvd. Suite 202 Los Angeles, CA 90010
213.368.1234 | cinemamakeup.com

Definitions

- “Number of Students Who Began the Program” means the number of students who began a program who were scheduled to complete the program within 100% of the published program length within the reporting calendar year and excludes all students who cancelled during the cancellation period.
- “Students Available for Graduation” is the number of students who began the program minus the number of students who have died, been incarcerated, or been called to active military duty.
- “Number of On-time Graduates” is the number of students who completed the program within 100% of the published program length within the reporting calendar year.
- “On-time Completion Rate” is the number of on-time graduates divided by the number of students available for graduation.
- “150% Graduates” is the number of students who completed the program within 150% of the program length (includes on-time graduates)
- “150% Completion Rate” is the number of students who completed the program in the reported calendar year within 150% of the published program length, including on-time graduates, divided by the number of students available for graduation.
- “Graduates Available for Employment” means the number of graduates minus the number of graduates unavailable for employment.
- “Graduates Unavailable for Employment” means the graduates who, after graduation, die, become incarcerated, are called to active military duty, are international students that leave the United States or do not have a visa allowing employment in the United States, or are continuing their education in an accredited or bureau-approved postsecondary institution.
- “Graduates Employed in the Field” means graduates who beginning within six months after a student completes the applicable educational program are gainfully employed, whose employment has been reported, and for whom the institution has documented verification of employment.
- “Placement Rate Employed in the Field” is calculated by dividing the number of graduates gainfully employed in the field by the number of graduates available for employment.
- “Number of Graduates Taking Exam” is the number of graduates who took the first available exam in the reported calendar year.
- “First Available Exam Date” is the date for the first available exam after a student completed a program.
- “Passage Rate” is calculated by dividing the number of graduates who took and passed the first available licensing exam after completing the program.
- “Number Who Passed First Available Exam” is the number of graduates who took and passed the first available licensing exam after completing the program.
- “Salary” is as reported by graduate or graduate’s employer.
- “No Salary Information Reported” is the number of graduates whom, after making reasonable attempts, the school was not able to obtain salary information.



CINEMAMAKEUPSCHOOL

3780 Wilshire Blvd. Suite 202 Los Angeles, CA 90010

213.368.1234 | cinemamakeup.com

STUDENT'S RIGHT TO CANCEL

26. The student has the right to cancel the Enrollment Agreement and obtain a refund of charges paid through attendance of the first class session or the seventh day after enrollment, whichever is later. Cancellation occurs when you give written Notice of Cancellation at School address shown on the top page of this Agreement. You can do this by mail, in person, by fax or telegram to the director of the School. This Notice of Cancellation, if mailed, is effective by postmarked date. This Notice need not take any particular form, it needs only to state you wish to cancel the Agreement. If you cancel this Agreement, School will refund any money that you paid (minus registration and cancellation fee, if applicable) within 45 days after your Notice is received.
27. Once purchased and in the student's possession, there is no refund for text materials such as books and manuals. Specifically, a student may not return a Student Makeup Kit once he/she takes possession of it due to health and sanitation reason.
28. You have the right to withdraw from School at any time. If you withdraw from the course of instruction after the Cancellation Period as in Par. 1, School will retain STRF fee paid and remit a refund less a registration fee, (not to exceed \$250) within 45 days following your withdrawal. You are obligated to pay only for educational services rendered and unreturned equipment up to 60% of the course or period of enrollment. After you complete 60% of the course or period of enrollment, there is no refund. The refund shall be the amount you paid for instruction multiplied by a fraction, the numerator of which is the number of hours of instruction which you have not received, but for which you have paid, the denominator of which is the total number of hours of instruction for which you have paid. Due to sanitation concerns, makeup kit costs cannot be refunded unless the student cancels his/her enrollment prior to being issued his/her materials on the first day of class. If the amount you have paid is more than the amount that you owe, then a refund will be made within 45 days of withdrawal. If the amount you owe is more than the amount that you paid, then you will have to make arrangements to pay it.
29. For the purpose of determining the amount you owe, you shall be deemed to have withdrawn from the course when any of the following occurs: (a) you notify the School of your withdrawal or the actual date of withdrawal; (b) School terminates your enrollment; (c) you fail to attend classes for a three-week period; (d) you fail to return from a leave of absence. In this case, the date of withdrawal shall be deemed to be the last date of recorded attendance.
30. If any portion of your tuition was paid from loan proceeds, any refund due will be sent to the lender or applicable agency. Any remaining refund amount will first be used to repay any student financial assistance programs from which you received benefits, to the extent of benefits received. Any remaining amount will be paid to the student's financier.



CINEMAMAKEUP SCHOOL

3780 Wilshire Blvd. Suite 202 Los Angeles, CA 90010
213.368.1234 | cinemamakeup.com

School Performance Fact Sheet

Calendar Years 2022 & 2023

Prosthetic Makeup – 4 weeks/140 clock hours

On-Time Completion Rates (Graduation Rates)

Includes data for the two calendar years prior to reporting.

Calendar Year	Number of Students Who Began the Program	Students Available for Graduation	Number of On-Time Graduates	On-Time Completion Rate
2022	21	21	21	100%
2023	15	15	15	100%

Student's Initials: _____ Date: _____

Initial only after you have had sufficient time to read and understand the information.

Job Placement Rates

Includes data for the two calendar years prior to reporting.

Calendar Year	Number of Students Who Began the Program	Number of Graduates	Graduates Available for Employment	Graduates Employed in the Field	Placement Rate Employed in the Field
2022	21	21	21	1	5%
2023	15	15	15	0	0%

You may obtain a list of the employment positions determined to be in the field for which a student received education and training. Please ask an institutional representative how you can review the list.

Gainfully Employed Categories

Includes data for the two calendar years prior to reporting.

Part-Time vs. Full-Time Employment

Calendar Year	Graduates Employed in the Field 20-29 hours per week	Graduates Employed in the Field at least 30 hours per week	Total Graduates Employed in the Field
2022	0	1	1
2023	0	0	0

Single Position vs. Concurrent Aggregated Position

Calendar Year	Graduates Employed in the Field in a Single Position	Graduates Employed in the Field in	Total Graduates Employed in the Field
---------------	--	------------------------------------	---------------------------------------



CINEMAMAKEUPSCHOOL

3780 Wilshire Blvd. Suite 202 Los Angeles, CA 90010
213.368.1234 | cinemamakeup.com

		Concurrent Aggregated Positions	
2022	1	0	1
2023	0	0	0

Self Employed – Freelance Positions

Calendar Year	Graduates Employed who are Self Employed or working Freelance	Total Graduates Employed in the Field
2022	1	1
2023	0	0

Institutional Employment

Calendar Year	Graduates Employed in the Field who are Employed by the Institution, an Employer Owned by the Institution, or an Employer who Shares Ownership with the Institution.	Total Graduates Employed in the Field
2022	0	1
2023	0	0

Student's Initials: _____ **Date:** _____

Initial only after you have had sufficient time to read and understand the information.

This program may result in freelance or self employment.

- The work available to graduates of this program is usually for freelance or self employment.
- This type of work may not be consistent.
- The period of employment can range from one day to weeks to several months.
- Hours worked in a day or week may be more or less than the traditional eight hour work day or 40 hour work week.
- You can expect to spend unpaid time expanding your network, advertising, promoting your services, or honing your skills.
- Once graduates begin to work freelance or are self employed they will be asked to provide documentation that they are employed as such so that they may be counted as placed for our job placement records.
- Students initialing this disclosure understand that either a majority or all of this school's graduates are employed in this manner and understand what comprises this work style.

Student's Initials: _____ **Date:** _____

Initial only after you have had sufficient time to read and understand the information.



CINEMAMAKEUPSCHOOL

3780 Wilshire Blvd. Suite 202 Los Angeles, CA 90010
213.368.1234 | cinemamakeup.com

License Examination Passage Rates

Includes data for the two calendar years prior to reporting.

Calendar Year	Number of Students Taking Exam	Number Who Passed First Exam Taken	Number Who Failed First Exam Taken	Passage Rate
2022	N/A	N/A	N/A	N/A
2023	N/A	N/A	N/A	N/A

Student's Initials: _____ Date: _____

Initial only after you have had sufficient time to read and understand the information.

Salary and Wage Information

Includes data for the two calendar years prior to reporting.

Annual salary and wages reported for graduates employed in the field.

Calendar Year	Graduates Available for Employment	Graduates Employed in Field	Annual Salary and Wages Reported Graduates Employed in the Field				
			\$0-5000	\$5001-\$10000	\$10001-\$15000	\$35001-\$40000	Students not Reporting Salary
2022	20	1	0	0	0	0	1
2023	15	0	0	0	0	0	15

A list of sources used to substantiate salary disclosures is available from the school. To obtain this list, please ask an institutional representative.

Student's Initials: _____ Date: _____

Initial only after you have had sufficient time to read and understand the information.

Cost of Educational Program:

Total charges for the program for students completing on time in 2023: \$5,522.50.

Total charges may be higher for students that do not complete on time.

Total charges for the program for students completing on time in 2022: \$5,522.50.

Total charges may be higher for students that do not complete on time.

Student's Initials: _____ Date: _____

Initial only after you have had sufficient time to read and understand the information.

Federal Student Loan Debt

Students at Cinema Makeup School are not eligible for federal student loans. This institution does not meet the U.S. Department of Education criteria that would allow its students to participate in federal student aid programs.

Student's Initials: _____ Date: _____

Initial only after you have had sufficient time to read and understand the information.



CINEMAMAKEUPSCHOOL

3780 Wilshire Blvd. Suite 202 Los Angeles, CA 90010
213.368.1234 | cinemamakeup.com

This fact sheet is filed with the Bureau for Private Postsecondary Education. Regardless of any information you may have relating to completion rates, placement rates, starting salaries, or license exam passage rates, this fact sheet contains the information as calculated pursuant to state law.

Any questions a student may have regarding this fact sheet that have not been satisfactorily answered by the institution may be directed to the Bureau for Private Postsecondary Education at 1747 N. Market Blvd, Suite 225, Sacramento, CA 95834, www.bppe.ca.gov, toll-free telephone number (888) 370-7589 or by fax (916) 263-1897.

Student Name – Print

Student Signature

Date

School Official

Date



CINEMAMAKEUP SCHOOL

3780 Wilshire Blvd. Suite 202 Los Angeles, CA 90010
213.368.1234 | cinemamakeup.com

Definitions

- “Number of Students Who Began the Program” means the number of students who began a program who were scheduled to complete the program within 100% of the published program length within the reporting calendar year and excludes all students who cancelled during the cancellation period.
- “Students Available for Graduation” is the number of students who began the program minus the number of students who have died, been incarcerated, or been called to active military duty.
- “Number of On-time Graduates” is the number of students who completed the program within 100% of the published program length within the reporting calendar year.
- “On-time Completion Rate” is the number of on-time graduates divided by the number of students available for graduation.
- “150% Graduates” is the number of students who completed the program within 150% of the program length (includes on-time graduates)
- “150% Completion Rate” is the number of students who completed the program in the reported calendar year within 150% of the published program length, including on-time graduates, divided by the number of students available for graduation.
- “Graduates Available for Employment” means the number of graduates minus the number of graduates unavailable for employment.
- “Graduates Unavailable for Employment” means the graduates who, after graduation, die, become incarcerated, are called to active military duty, are international students that leave the United States or do not have a visa allowing employment in the United States, or are continuing their education in an accredited or bureau-approved postsecondary institution.
- “Graduates Employed in the Field” means graduates who beginning within six months after a student completes the applicable educational program are gainfully employed, whose employment has been reported, and for whom the institution has documented verification of employment.
- “Placement Rate Employed in the Field” is calculated by dividing the number of graduates gainfully employed in the field by the number of graduates available for employment.
- “Number of Graduates Taking Exam” is the number of graduates who took the first available exam in the reported calendar year.
- “First Available Exam Date” is the date for the first available exam after a student completed a program.
- “Passage Rate” is calculated by dividing the number of graduates who took and passed the first available licensing exam after completing the program.
- “Number Who Passed First Available Exam” is the number of graduates who took and passed the first available licensing exam after completing the program.
- “Salary” is as reported by graduate or graduate’s employer.
- “No Salary Information Reported” is the number of graduates whom, after making reasonable attempts, the school was not able to obtain salary information.



CINEMAMAKEUPSCHOOL

3780 Wilshire Blvd. Suite 202 Los Angeles, CA 90010

213.368.1234 | cinemamakeup.com

STUDENT'S RIGHT TO CANCEL

31. The student has the right to cancel the Enrollment Agreement and obtain a refund of charges paid through attendance of the first class session or the seventh day after enrollment, whichever is later. Cancellation occurs when you give written Notice of Cancellation at School address shown on the top page of this Agreement. You can do this by mail, in person, by fax or telegram to the director of the School. This Notice of Cancellation, if mailed, is effective by postmarked date. This Notice need not take any particular form, it needs only to state you wish to cancel the Agreement. If you cancel this Agreement, School will refund any money that you paid (minus registration and cancellation fee, if applicable) within 45 days after your Notice is received.
32. Once purchased and in the student's possession, there is no refund for text materials such as books and manuals. Specifically, a student may not return a Student Makeup Kit once he/she takes possession of it due to health and sanitation reason.
33. You have the right to withdraw from School at any time. If you withdraw from the course of instruction after the Cancellation Period as in Par. 1, School will retain STRF fee paid and remit a refund less a registration fee, (not to exceed \$250) within 45 days following your withdrawal. You are obligated to pay only for educational services rendered and unreturned equipment up to 60% of the course or period of enrollment. After you complete 60% of the course or period of enrollment, there is no refund. The refund shall be the amount you paid for instruction multiplied by a fraction, the numerator of which is the number of hours of instruction which you have not received, but for which you have paid, the denominator of which is the total number of hours of instruction for which you have paid. Due to sanitation concerns, makeup kit costs cannot be refunded unless the student cancels his/her enrollment prior to being issued his/her materials on the first day of class. If the amount you have paid is more than the amount that you owe, then a refund will be made within 45 days of withdrawal. If the amount you owe is more than the amount that you paid, then you will have to make arrangements to pay it.
34. For the purpose of determining the amount you owe, you shall be deemed to have withdrawn from the course when any of the following occurs: (a) you notify the School of your withdrawal or the actual date of withdrawal; (b) School terminates your enrollment; (c) you fail to attend classes for a three-week period; (d) you fail to return from a leave of absence. In this case, the date of withdrawal shall be deemed to be the last date of recorded attendance.
35. If any portion of your tuition was paid from loan proceeds, any refund due will be sent to the lender or applicable agency. Any remaining refund amount will first be used to repay any student financial assistance programs from which you received benefits, to the extent of benefits received. Any remaining amount will be paid to the student's financier.



CINEMAMAKEUPSCHOOL

3780 Wilshire Blvd. Suite 202 Los Angeles, CA 90010
213.368.1234 | cinemamakeup.com

School Performance Fact Sheet

Calendar Years 2022 & 2023

Special Makeup Effects – 4 weeks/140 clock hours

On-Time Completion Rates (Graduation Rates)

Includes data for the two calendar years prior to reporting.

Calendar Year	Number of Students Who Began the Program	Students Available for Graduation	Number of On-Time Graduates	On-Time Completion Rate
2022	8	8	8	100%
2023	16	16	16	100%

Student's Initials: _____ Date: _____

Initial only after you have had sufficient time to read and understand the information.

Job Placement Rates

Includes data for the two calendar years prior to reporting.

Calendar Year	Number of Students Who Began the Program	Number of Graduates	Graduates Available for Employment	Graduates Employed in the Field	Placement Rate Employed in the Field
2022	8	8	8	1	13%
2023	16	16	16	1	6%

You may obtain a list of the employment positions determined to be in the field for which a student received education and training. Please ask an institutional representative how you can review the list.

Gainfully Employed Categories

Includes data for the two calendar years prior to reporting.

Part-Time vs. Full-Time Employment

Calendar Year	Graduates Employed in the Field 20-29 hours per week	Graduates Employed in the Field at least 30 hours per week	Total Graduates Employed in the Field
2022	0	1	1
2023	1	0	1

Single Position vs. Concurrent Aggregated Position

Calendar Year	Graduates Employed in the Field in a Single Position	Graduates Employed in the Field in	Total Graduates Employed in the Field



CINEMAMAKEUP SCHOOL

3780 Wilshire Blvd. Suite 202 Los Angeles, CA 90010
213.368.1234 | cinemamakeup.com

		Concurrent Aggregated Positions	
2022	0	1	1
2023	0	1	1

Self Employed – Freelance Positions

Calendar Year	Graduates Employed who are Self Employed or working Freelance	Total Graduates Employed in the Field
2022	1	1
2023	1	1

Institutional Employment

Calendar Year	Graduates Employed in the Field who are Employed by the Institution, an Employer Owned by the Institution, or an Employer who Shares Ownership with the Institution.	Total Graduates Employed in the Field
2022	0	1
2023	0	1

Student's Initials: _____ **Date:** _____

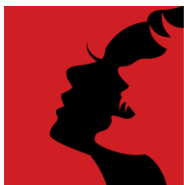
Initial only after you have had sufficient time to read and understand the information.

This program may result in freelance or self employment.

- The work available to graduates of this program is usually for freelance or self employment.
- This type of work may not be consistent.
- The period of employment can range from one day to weeks to several months.
- Hours worked in a day or week may be more or less than the traditional eight hour work day or 40 hour work week.
- You can expect to spend unpaid time expanding your network, advertising, promoting your services, or honing your skills.
- Once graduates begin to work freelance or are self employed they will be asked to provide documentation that they are employed as such so that they may be counted as placed for our job placement records.
- Students initialing this disclosure understand that either a majority or all of this school's graduates are employed in this manner and understand what comprises this work style.

Student's Initials: _____ **Date:** _____

Initial only after you have had sufficient time to read and understand the information.



CINEMAMAKEUPSCHOOL

3780 Wilshire Blvd. Suite 202 Los Angeles, CA 90010
213.368.1234 | cinemamakeup.com

License Examination Passage Rates

Includes data for the two calendar years prior to reporting.

Calendar Year	Number of Students Taking Exam	Number Who Passed First Exam Taken	Number Who Failed First Exam Taken	Passage Rate
2022	N/A	N/A	N/A	N/A
2023	N/A	N/A	N/A	N/A

Student's Initials: _____ Date: _____

Initial only after you have had sufficient time to read and understand the information.

Salary and Wage Information

Includes data for the two calendar years prior to reporting.

Annual salary and wages reported for graduates employed in the field.

Calendar Year	Graduates Available for Employment	Graduates Employed in Field	Annual Salary and Wages Reported Graduates Employed in the Field				
			\$0-5000	\$5001-\$10000	\$10001-\$15000	\$35001-\$40000	Students not Reporting Salary
2022	8	1	0	0	1	0	0
2023	16	1	0	0	0	0	15

A list of sources used to substantiate salary disclosures is available from the school. To obtain this list, please ask an institutional representative.

Student's Initials: _____ Date: _____

Initial only after you have had sufficient time to read and understand the information.

Cost of Educational Program:

Total charges for the program for students completing on time in 2023: \$5,422.50.

Total charges may be higher for students that do not complete on time.

Total charges for the program for students completing on time in 2022: \$5,422.50.

Total charges may be higher for students that do not complete on time.

Student's Initials: _____ Date: _____

Initial only after you have had sufficient time to read and understand the information.

Federal Student Loan Debt

Students at Cinema Makeup School are not eligible for federal student loans. This institution does not meet the U.S. Department of Education criteria that would allow its students to participate in federal student aid programs.

Student's Initials: _____ Date: _____

Initial only after you have had sufficient time to read and understand the information.



CINEMAMAKEUPSCHOOL

3780 Wilshire Blvd. Suite 202 Los Angeles, CA 90010
213.368.1234 | cinemamakeup.com

This fact sheet is filed with the Bureau for Private Postsecondary Education. Regardless of any information you may have relating to completion rates, placement rates, starting salaries, or license exam passage rates, this fact sheet contains the information as calculated pursuant to state law.

Any questions a student may have regarding this fact sheet that have not been satisfactorily answered by the institution may be directed to the Bureau for Private Postsecondary Education at 1747 N. Market Blvd, Suite 225, Sacramento, CA 95834, www.bppe.ca.gov, toll-free telephone number (888) 370-7589 or by fax (916) 263-1897.

Student Name – Print

Student Signature

Date

School Official

Date



CINEMAMAKEUP SCHOOL

3780 Wilshire Blvd. Suite 202 Los Angeles, CA 90010

213.368.1234 | cinemamakeup.com

Definitions

- “Number of Students Who Began the Program” means the number of students who began a program who were scheduled to complete the program within 100% of the published program length within the reporting calendar year and excludes all students who cancelled during the cancellation period.
- “Students Available for Graduation” is the number of students who began the program minus the number of students who have died, been incarcerated, or been called to active military duty.
- “Number of On-time Graduates” is the number of students who completed the program within 100% of the published program length within the reporting calendar year.
- “On-time Completion Rate” is the number of on-time graduates divided by the number of students available for graduation.
- “150% Graduates” is the number of students who completed the program within 150% of the program length (includes on-time graduates)
- “150% Completion Rate” is the number of students who completed the program in the reported calendar year within 150% of the published program length, including on-time graduates, divided by the number of students available for graduation.
- “Graduates Available for Employment” means the number of graduates minus the number of graduates unavailable for employment.
- “Graduates Unavailable for Employment” means the graduates who, after graduation, die, become incarcerated, are called to active military duty, are international students that leave the United States or do not have a visa allowing employment in the United States, or are continuing their education in an accredited or bureau-approved postsecondary institution.
- “Graduates Employed in the Field” means graduates who beginning within six months after a student completes the applicable educational program are gainfully employed, whose employment has been reported, and for whom the institution has documented verification of employment.
- “Placement Rate Employed in the Field” is calculated by dividing the number of graduates gainfully employed in the field by the number of graduates available for employment.
- “Number of Graduates Taking Exam” is the number of graduates who took the first available exam in the reported calendar year.
- “First Available Exam Date” is the date for the first available exam after a student completed a program.
- “Passage Rate” is calculated by dividing the number of graduates who took and passed the first available licensing exam after completing the program.
- “Number Who Passed First Available Exam” is the number of graduates who took and passed the first available licensing exam after completing the program.
- “Salary” is as reported by graduate or graduate’s employer.
- “No Salary Information Reported” is the number of graduates whom, after making reasonable attempts, the school was not able to obtain salary information.



CINEMAMAKEUPSCHOOL

3780 Wilshire Blvd. Suite 202 Los Angeles, CA 90010

213.368.1234 | cinemamakeup.com

STUDENT'S RIGHT TO CANCEL

36. The student has the right to cancel the Enrollment Agreement and obtain a refund of charges paid through attendance of the first class session or the seventh day after enrollment, whichever is later. Cancellation occurs when you give written Notice of Cancellation at School address shown on the top page of this Agreement. You can do this by mail, in person, by fax or telegram to the director of the School. This Notice of Cancellation, if mailed, is effective by postmarked date. This Notice need not take any particular form, it needs only to state you wish to cancel the Agreement. If you cancel this Agreement, School will refund any money that you paid (minus registration and cancellation fee, if applicable) within 45 days after your Notice is received.
37. Once purchased and in the student's possession, there is no refund for text materials such as books and manuals. Specifically, a student may not return a Student Makeup Kit once he/she takes possession of it due to health and sanitation reason.
38. You have the right to withdraw from School at any time. If you withdraw from the course of instruction after the Cancellation Period as in Par. 1, School will retain STRF fee paid and remit a refund less a registration fee, (not to exceed \$250) within 45 days following your withdrawal. You are obligated to pay only for educational services rendered and unreturned equipment up to 60% of the course or period of enrollment. After you complete 60% of the course or period of enrollment, there is no refund. The refund shall be the amount you paid for instruction multiplied by a fraction, the numerator of which is the number of hours of instruction which you have not received, but for which you have paid, the denominator of which is the total number of hours of instruction for which you have paid. Due to sanitation concerns, makeup kit costs cannot be refunded unless the student cancels his/her enrollment prior to being issued his/her materials on the first day of class. If the amount you have paid is more than the amount that you owe, then a refund will be made within 45 days of withdrawal. If the amount you owe is more than the amount that you paid, then you will have to make arrangements to pay it.
39. For the purpose of determining the amount you owe, you shall be deemed to have withdrawn from the course when any of the following occurs: (a) you notify the School of your withdrawal or the actual date of withdrawal; (b) School terminates your enrollment; (c) you fail to attend classes for a three-week period; (d) you fail to return from a leave of absence. In this case, the date of withdrawal shall be deemed to be the last date of recorded attendance.
40. If any portion of your tuition was paid from loan proceeds, any refund due will be sent to the lender or applicable agency. Any remaining refund amount will first be used to repay any student financial assistance programs from which you received benefits, to the extent of benefits received. Any remaining amount will be paid to the student's financier.



CINEMAMAKEUP SCHOOL

3780 Wilshire Blvd. Suite 202 Los Angeles, CA 90010
213.368.1234 | cinemamakeup.com

School Performance Fact Sheet

Calendar Years 2022 & 2023

Advanced Beauty Theory – 3 weeks/120 clock hours

On-Time Completion Rates (Graduation Rates)

Includes data for the two calendar years prior to reporting.

Calendar Year	Number of Students Who Began the Program	Students Available for Graduation	Number of On-Time Graduates	On-Time Completion Rate
2022	7	7	7	100%
2023	5	6	5	100%

Student's Initials: _____ Date: _____

Initial only after you have had sufficient time to read and understand the information.

Job Placement Rates

Includes data for the two calendar years prior to reporting.

Calendar Year	Number of Students Who Began the Program	Number of Graduates	Graduates Available for Employment	Graduates Employed in the Field	Placement Rate Employed in the Field
2022	7	7	7	2	30%
2023	5	5	5	1	20%

You may obtain a list of the employment positions determined to be in the field for which a student received education and training. Please ask an institutional representative how you can review the list.

Gainfully Employed Categories

Includes data for the two calendar years prior to reporting.

Part-Time vs. Full-Time Employment

Calendar Year	Graduates Employed in the Field 20-29 hours per week	Graduates Employed in the Field at least 30 hours per week	Total Graduates Employed in the Field
2022	0	2	2
2023	1	0	1

Single Position vs. Concurrent Aggregated Position

Calendar Year	Graduates Employed in the Field in a Single Position	Graduates Employed in the Field in	Total Graduates Employed in the Field
---------------	--	------------------------------------	---------------------------------------



CINEMAMAKEUP SCHOOL

3780 Wilshire Blvd. Suite 202 Los Angeles, CA 90010
213.368.1234 | cinemamakeup.com

		Concurrent Aggregated Positions	
2022	2	0	1
2023	1	0	1

Self Employed – Freelance Positions

Calendar Year	Graduates Employed who are Self Employed or working Freelance	Total Graduates Employed in the Field
2022	0	1
2023	1	0

Institutional Employment

Calendar Year	Graduates Employed in the Field who are Employed by the Institution, an Employer Owned by the Institution, or an Employer who Shares Ownership with the Institution.	Total Graduates Employed in the Field
2022	1	1
2023	0	1

Student's Initials: _____ **Date:** _____

Initial only after you have had sufficient time to read and understand the information.

This program may result in freelance or self employment.

- The work available to graduates of this program is usually for freelance or self employment.
- This type of work may not be consistent.
- The period of employment can range from one day to weeks to several months.
- Hours worked in a day or week may be more or less than the traditional eight hour work day or 40 hour work week.
- You can expect to spend unpaid time expanding your network, advertising, promoting your services, or honing your skills.
- Once graduates begin to work freelance or are self employed they will be asked to provide documentation that they are employed as such so that they may be counted as placed for our job placement records.
- Students initialing this disclosure understand that either a majority or all of this school's graduates are employed in this manner and understand what comprises this work style.

Student's Initials: _____ **Date:** _____

Initial only after you have had sufficient time to read and understand the information.



CINEMAMAKEUPSCHOOL

3780 Wilshire Blvd. Suite 202 Los Angeles, CA 90010
213.368.1234 | cinemamakeup.com

License Examination Passage Rates

Includes data for the two calendar years prior to reporting.

Calendar Year	Number of Students Taking Exam	Number Who Passed First Exam Taken	Number Who Failed First Exam Taken	Passage Rate
2022	N/A	N/A	N/A	N/A
2023	N/A	N/A	N/A	N/A

Student's Initials: _____ Date: _____

Initial only after you have had sufficient time to read and understand the information.

Salary and Wage Information

Includes data for the two calendar years prior to reporting.

Annual salary and wages reported for graduates employed in the field.

Calendar Year	Graduates Available for Employment	Graduates Employed in Field	Annual Salary and Wages Reported Graduates Employed in the Field						Students not Reporting Salary
			\$0-5000	\$5001-\$10000	\$10001-\$15000	\$15001-\$20000	\$20001-\$35000	\$35001-\$40000	
2022	7	2	2	0	0	0	0	0	5
2023	5	1	1	0	0	0	0	0	4

A list of sources used to substantiate salary disclosures is available from the school. To obtain this list, please ask an institutional representative.

Student's Initials: _____ Date: _____

Initial only after you have had sufficient time to read and understand the information.

Cost of Educational Program:

Total charges for the program for students completing on time in 2023: \$3,317.50.

Total charges may be higher for students that do not complete on time.

Total charges for the program for students completing on time in 2022: \$3,317.50.

Additional charges may be incurred if the program is not completed on-time.

Student's Initials: _____ Date: _____

Initial only after you have had sufficient time to read and understand the information.

Federal Student Loan Debt

Students at Cinema Makeup School are not eligible for federal student loans. This institution does not meet the U.S. Department of Education criteria that would allow its students to participate in federal student aid programs.

Student's Initials: _____ Date: _____

Initial only after you have had sufficient time to read and understand the information.



CINEMAMAKEUPSCHOOL

3780 Wilshire Blvd. Suite 202 Los Angeles, CA 90010
213.368.1234 | cinemamakeup.com

This fact sheet is filed with the Bureau for Private Postsecondary Education. Regardless of any information you may have relating to completion rates, placement rates, starting salaries, or license exam passage rates, this fact sheet contains the information as calculated pursuant to state law.

Any questions a student may have regarding this fact sheet that have not been satisfactorily answered by the institution may be directed to the Bureau for Private Postsecondary Education at 1747 N. Market Blvd, Suite 225, Sacramento, CA 95834, www.bppe.ca.gov, toll-free telephone number (888) 370-7589 or by fax (916) 263-1897.

Student Name – Print

Student Signature

Date

School Official

Date



CINEMAMAKEUPSCHOOL

3780 Wilshire Blvd. Suite 202 Los Angeles, CA 90010
213.368.1234 | cinemamakeup.com

Definitions

- “Number of Students Who Began the Program” means the number of students who began a program who were scheduled to complete the program within 100% of the published program length within the reporting calendar year and excludes all students who cancelled during the cancellation period.
- “Students Available for Graduation” is the number of students who began the program minus the number of students who have died, been incarcerated, or been called to active military duty.
- “Number of On-time Graduates” is the number of students who completed the program within 100% of the published program length within the reporting calendar year.
- “On-time Completion Rate” is the number of on-time graduates divided by the number of students available for graduation.
- “150% Graduates” is the number of students who completed the program within 150% of the program length (includes on-time graduates)
- “150% Completion Rate” is the number of students who completed the program in the reported calendar year within 150% of the published program length, including on-time graduates, divided by the number of students available for graduation.
- “Graduates Available for Employment” means the number of graduates minus the number of graduates unavailable for employment.
- “Graduates Unavailable for Employment” means the graduates who, after graduation, die, become incarcerated, are called to active military duty, are international students that leave the United States or do not have a visa allowing employment in the United States, or are continuing their education in an accredited or bureau-approved postsecondary institution.
- “Graduates Employed in the Field” means graduates who beginning within six months after a student completes the applicable educational program are gainfully employed, whose employment has been reported, and for whom the institution has documented verification of employment.
- “Placement Rate Employed in the Field” is calculated by dividing the number of graduates gainfully employed in the field by the number of graduates available for employment.
- “Number of Graduates Taking Exam” is the number of graduates who took the first available exam in the reported calendar year.
- “First Available Exam Date” is the date for the first available exam after a student completed a program.
- “Passage Rate” is calculated by dividing the number of graduates who took and passed the first available licensing exam after completing the program.
- “Number Who Passed First Available Exam” is the number of graduates who took and passed the first available licensing exam after completing the program.
- “Salary” is as reported by graduate or graduate’s employer.
- “No Salary Information Reported” is the number of graduates whom, after making reasonable attempts, the school was not able to obtain salary information.



CINEMAMA MAKEUP SCHOOL

3780 Wilshire Blvd. Suite 202 Los Angeles, CA 90010

213.368.1234 | cinemamakeup.com

STUDENT'S RIGHT TO CANCEL

41. The student has the right to cancel the Enrollment Agreement and obtain a refund of charges paid through attendance of the first class session or the seventh day after enrollment, whichever is later. Cancellation occurs when you give written Notice of Cancellation at School address shown on the top page of this Agreement. You can do this by mail, in person, by fax or telegram to the director of the School. This Notice of Cancellation, if mailed, is effective by postmarked date. This Notice need not take any particular form, it needs only to state you wish to cancel the Agreement. If you cancel this Agreement, School will refund any money that you paid (minus registration and cancellation fee, if applicable) within 45 days after your Notice is received.
42. Once purchased and in the student's possession, there is no refund for text materials such as books and manuals. Specifically, a student may not return a Student Makeup Kit once he/she takes possession of it due to health and sanitation reason.
43. You have the right to withdraw from School at any time. If you withdraw from the course of instruction after the Cancellation Period as in Par. 1, School will retain STRF fee paid and remit a refund less a registration fee, (not to exceed \$250) within 45 days following your withdrawal. You are obligated to pay only for educational services rendered and unreturned equipment up to 60% of the course or period of enrollment. After you complete 60% of the course or period of enrollment, there is no refund. The refund shall be the amount you paid for instruction multiplied by a fraction, the numerator of which is the number of hours of instruction which you have not received, but for which you have paid, the denominator of which is the total number of hours of instruction for which you have paid. Due to sanitation concerns, makeup kit costs cannot be refunded unless the student cancels his/her enrollment prior to being issued his/her materials on the first day of class. If the amount you have paid is more than the amount that you owe, then a refund will be made within 45 days of withdrawal. If the amount you owe is more than the amount that you paid, then you will have to make arrangements to pay it.
44. For the purpose of determining the amount you owe, you shall be deemed to have withdrawn from the course when any of the following occurs: (a) you notify the School of your withdrawal or the actual date of withdrawal; (b) School terminates your enrollment; (c) you fail to attend classes for a three-week period; (d) you fail to return from a leave of absence. In this case, the date of withdrawal shall be deemed to be the last date of recorded attendance.
45. If any portion of your tuition was paid from loan proceeds, any refund due will be sent to the lender or applicable agency. Any remaining refund amount will first be used to repay any student financial assistance programs from which you received benefits, to the extent of benefits received. Any remaining amount will be paid to the student's financier.



CINEMAMAKEUP SCHOOL

3780 Wilshire Blvd. Suite 202 Los Angeles, CA 90010
213.368.1234 | cinemamakeup.com

School Performance Fact Sheet

Calendar Years 2022 & 2023

Advanced Lab Techniques – 4 weeks/160 clock hours

On-Time Completion Rates (Graduation Rates)

Includes data for the two calendar years prior to reporting.

Calendar Year	Number of Students Who Began the Program	Students Available for Graduation	Number of On-Time Graduates	On-Time Completion Rate
2022	7	7	7	100%
2023	6	6	6	100%

Student's Initials: _____ Date: _____

Initial only after you have had sufficient time to read and understand the information.

Job Placement Rates

Includes data for the two calendar years prior to reporting.

Calendar Year	Number of Students Who Began the Program	Number of Graduates	Graduates Available for Employment	Graduates Employed in the Field	Placement Rate Employed in the Field
2022	7	7	7	2	30%
2023	6	6	6	0	0%

You may obtain a list of the employment positions determined to be in the field for which a student received education and training. Please ask an institutional representative how you can review the list.

Gainfully Employed Categories

Includes data for the two calendar years prior to reporting.

Part-Time vs. Full-Time Employment

Calendar Year	Graduates Employed in the Field 20-29 hours per week	Graduates Employed in the Field at least 30 hours per week	Total Graduates Employed in the Field
2022	0	2	2
2023	0	0	0

Single Position vs. Concurrent Aggregated Position

Calendar Year	Graduates Employed in the Field in a Single Position	Graduates Employed in the Field in	Total Graduates Employed in the Field



CINEMAMAKEUPSCHOOL

3780 Wilshire Blvd. Suite 202 Los Angeles, CA 90010
213.368.1234 | cinemamakeup.com

		Concurrent Aggregated Positions	
2022	2	0	2
2023	0	0	0

Self Employed – Freelance Positions

Calendar Year	Graduates Employed who are Self Employed or working Freelance	Total Graduates Employed in the Field
2022	2	2
2023	0	0

Institutional Employment

Calendar Year	Graduates Employed in the Field who are Employed by the Institution, an Employer Owned by the Institution, or an Employer who Shares Ownership with the Institution.	Total Graduates Employed in the Field
2022	0	2
2023	0	0

Student's Initials: _____ **Date:** _____

Initial only after you have had sufficient time to read and understand the information.

This program may result in freelance or self employment.

- The work available to graduates of this program is usually for freelance or self employment.
- This type of work may not be consistent.
- The period of employment can range from one day to weeks to several months.
- Hours worked in a day or week may be more or less than the traditional eight hour work day or 40 hour work week.
- You can expect to spend unpaid time expanding your network, advertising, promoting your services, or honing your skills.
- Once graduates begin to work freelance or are self employed they will be asked to provide documentation that they are employed as such so that they may be counted as placed for our job placement records.
- Students initialing this disclosure understand that either a majority or all of this school's graduates are employed in this manner and understand what comprises this work style.

Student's Initials: _____ **Date:** _____

Initial only after you have had sufficient time to read and understand the information.



CINEMAMAKEUPSCHOOL

3780 Wilshire Blvd. Suite 202 Los Angeles, CA 90010
213.368.1234 | cinemamakeup.com

License Examination Passage Rates

Includes data for the two calendar years prior to reporting.

Calendar Year	Number of Students Taking Exam	Number Who Passed First Exam Taken	Number Who Failed First Exam Taken	Passage Rate
2022	N/A	N/A	N/A	N/A
2023	N/A	N/A	N/A	N/A

Student's Initials: _____ Date: _____

Initial only after you have had sufficient time to read and understand the information.

Salary and Wage Information

Includes data for the two calendar years prior to reporting.

Annual salary and wages reported for graduates employed in the field.

Calendar Year	Graduates Available for Employment	Graduates Employed in Field	Annual Salary and Wages Reported Graduates Employed in the Field						Students not Reporting Salary
			\$0-5000	\$5001-\$10000	\$10001-\$15000	\$15001-\$20000	\$20001-\$35000	\$35001-\$40000	
2022	7	2	0	0	0	0	0	0	7
2023	6	0	0	0	0	0	0	0	6

A list of sources used to substantiate salary disclosures is available from the school. To obtain this list, please ask an institutional representative.

Student's Initials: _____ Date: _____

Initial only after you have had sufficient time to read and understand the information.

Cost of Educational Program:

Total charges for the program for students completing on time in 2023: \$7,317.50.

Total charges may be higher for students that do not complete on time.

Total charges for the program for students completing on time in 2022: \$7,317.50.

Student's Initials: _____ Date: _____

Initial only after you have had sufficient time to read and understand the information.

Federal Student Loan Debt

Students at Cinema Makeup School are not eligible for federal student loans. This institution does not meet the U.S. Department of Education criteria that would allow its students to participate in federal student aid programs.

Student's Initials: _____ Date: _____



CINEMAMAKEUPSCHOOL

3780 Wilshire Blvd. Suite 202 Los Angeles, CA 90010
213.368.1234 | cinemamakeup.com

Initial only after you have had sufficient time to read and understand the information.

This fact sheet is filed with the Bureau for Private Postsecondary Education. Regardless of any information you may have relating to completion rates, placement rates, starting salaries, or license exam passage rates, this fact sheet contains the information as calculated pursuant to state law.

Any questions a student may have regarding this fact sheet that have not been satisfactorily answered by the institution may be directed to the Bureau for Private Postsecondary Education at 1747 N. Market Blvd, Suite 225, Sacramento, CA 95834, www.bppe.ca.gov, toll-free telephone number (888) 370-7589 or by fax (916) 263-1897.

Student Name – Print

Student Signature

Date

School Official

Date

This program is new. Therefore, the number of students who graduate, the number of students who are placed, or the starting salary you can earn after finishing the educational program are unknown at this time. Information regarding general salary and placement statistics may be available from government sources or from the institution, but it is not equivalent to actual performance data. This program was approved by the Bureau on 07/29/2019. As of 07/29/2021, two full years of data for this program will be available.



CINEMAMAKEUPSCHOOL

3780 Wilshire Blvd. Suite 202 Los Angeles, CA 90010

213.368.1234 | cinemamakeup.com

Definitions

- “Number of Students Who Began the Program” means the number of students who began a program who were scheduled to complete the program within 100% of the published program length within the reporting calendar year and excludes all students who cancelled during the cancellation period.
- “Students Available for Graduation” is the number of students who began the program minus the number of students who have died, been incarcerated, or been called to active military duty.
- “Number of On-time Graduates” is the number of students who completed the program within 100% of the published program length within the reporting calendar year.
- “On-time Completion Rate” is the number of on-time graduates divided by the number of students available for graduation.
- “150% Graduates” is the number of students who completed the program within 150% of the program length (includes on-time graduates)
- “150% Completion Rate” is the number of students who completed the program in the reported calendar year within 150% of the published program length, including on-time graduates, divided by the number of students available for graduation.
- “Graduates Available for Employment” means the number of graduates minus the number of graduates unavailable for employment.
- “Graduates Unavailable for Employment” means the graduates who, after graduation, die, become incarcerated, are called to active military duty, are international students that leave the United States or do not have a visa allowing employment in the United States, or are continuing their education in an accredited or bureau-approved postsecondary institution.
- “Graduates Employed in the Field” means graduates who beginning within six months after a student completes the applicable educational program are gainfully employed, whose employment has been reported, and for whom the institution has documented verification of employment.
- “Placement Rate Employed in the Field” is calculated by dividing the number of graduates gainfully employed in the field by the number of graduates available for employment.
- “Number of Graduates Taking Exam” is the number of graduates who took the first available exam in the reported calendar year.
- “First Available Exam Date” is the date for the first available exam after a student completed a program.
- “Passage Rate” is calculated by dividing the number of graduates who took and passed the first available licensing exam after completing the program.
- “Number Who Passed First Available Exam” is the number of graduates who took and passed the first available licensing exam after completing the program.
- “Salary” is as reported by graduate or graduate’s employer.
- “No Salary Information Reported” is the number of graduates whom, after making reasonable attempts, the school was not able to obtain salary information.
- “No Salary Information Reported” is the number of graduates whom, after making reasonable attempts, the school was not able to obtain salary information.



CINEMAMAKEUP SCHOOL

3780 Wilshire Blvd. Suite 202 Los Angeles, CA 90010

213.368.1234 | cinemamakeup.com

STUDENT'S RIGHT TO CANCEL

46. The student has the right to cancel the Enrollment Agreement and obtain a refund of charges paid through attendance of the first class session or the seventh day after enrollment, whichever is later. Cancellation occurs when you give written Notice of Cancellation at School address shown on the top page of this Agreement. You can do this by mail, in person, by fax or telegram to the director of the School. This Notice of Cancellation, if mailed, is effective by postmarked date. This Notice need not take any particular form, it needs only to state you wish to cancel the Agreement. If you cancel this Agreement, School will refund any money that you paid (minus registration and cancellation fee, if applicable) within 45 days after your Notice is received.
47. Once purchased and in the student's possession, there is no refund for text materials such as books and manuals. Specifically, a student may not return a Student Makeup Kit once he/she takes possession of it due to health and sanitation reason.
48. You have the right to withdraw from School at any time. If you withdraw from the course of instruction after the Cancellation Period as in Par. 1, School will retain STRF fee paid and remit a refund less a registration fee, (not to exceed \$250) within 45 days following your withdrawal. You are obligated to pay only for educational services rendered and unreturned equipment up to 60% of the course or period of enrollment. After you complete 60% of the course or period of enrollment, there is no refund. The refund shall be the amount you paid for instruction multiplied by a fraction, the numerator of which is the number of hours of instruction which you have not received, but for which you have paid, the denominator of which is the total number of hours of instruction for which you have paid. Due to sanitation concerns, makeup kit costs cannot be refunded unless the student cancels his/her enrollment prior to being issued his/her materials on the first day of class. If the amount you have paid is more than the amount that you owe, then a refund will be made within 45 days of withdrawal. If the amount you owe is more than the amount that you paid, then you will have to make arrangements to pay it.
49. For the purpose of determining the amount you owe, you shall be deemed to have withdrawn from the course when any of the following occurs: (a) you notify the School of your withdrawal or the actual date of withdrawal; (b) School terminates your enrollment; (c) you fail to attend classes for a three-week period; (d) you fail to return from a leave of absence. In this case, the date of withdrawal shall be deemed to be the last date of recorded attendance.
50. If any portion of your tuition was paid from loan proceeds, any refund due will be sent to the lender or applicable agency. Any remaining refund amount will first be used to repay any student financial assistance programs from which you received benefits, to the extent of benefits received. Any remaining amount will be paid to the student's financier.