

ST. LUKE UNIVERSITY

ACADEMIC CATALOG

AUGUST 1, 2023 – JULY 31, 2024

1460 E. Holt Avenue, Suite 72
Pomona, CA 91767

Tel: (909) 623-0302 Fax: (909) 623-0480
Web: stlukeuniv.edu
Email: info@stlukeuniv.edu

THIS CATALOG CONTAINS CURRENT INFORMATION REGARDING THE ADMISSION, DEGREE REQUIREMENTS, FEES, POLICIES, AND COURSE OF OFFERINGS. THE POLICY OF ST. LUKE UNIVERSITY IS TO GIVE ADVANCE NOTICE OF CHANGE, WHENEVER POSSIBLE, TO PERMIT ADJUSTMENT. HOWEVER, THE REGENTS AND THE FACULTY RESERVE THE RIGHT TO MODIFY, REVOKE, OR ADD POLICIES OR PROCEDURES AT ANY TIME. IF A STUDENT DROP OUT OF THE UNIVERSITY, OR BECOMES INACTIVE, AND LATER RETURNS, HE/SHE IS UNDER THE JURISDICTION OF THE POLICIES AND PROCEDURES OF THE CATALOG IN EFFECT AT THE TIME OF HIS/HER RETURN.

MESSAGE FROM THE PRESIDENT

Welcome!

St. Luke University was established to help students who want to accomplish their dreams through lifelong learning, healing for the self as well as neighbors, and providing a purpose for life.

It is never easy to begin a journey when the destination is unclear and is only more difficult without the necessary tools and equipment to assist you. However, life is about embarking on this journey, and you need to know where you are going must also equip yourself.

St. Luke University believes that it is the role of the university to help clarify your goals and give you the tools to complete your journey. I believe that we can equip you with the knowledge and the skills to realize your dreams.

Through the training experience at St. Luke University, you will be encouraged and prepared to become actively involved in the professional community of your chosen field of study. This will help you make professional contributions as well as seek continuing education.

St. Luke University will expect you to perform your best while we provide you with your education. Establish your dreams now as you prepare to embark upon this wonderful journey. Set your sights on graduation and a successful practice beyond.

Welcome again to St. Luke University, your doorway to an exciting and fulfilling future!

Rev. Young D. Kim, D.Min.
Founder/President

TABLE OF CONTENTS

ST. LUKE UNIVERSITY 4

| | |
|--|---|
| Mission Statement..... | 4 |
| Institutional Objectives..... | 4 |
| Statement of Ethical Values and Standards..... | 4 |
| Philosophy of Education | 6 |
| Statement of Faith..... | 6 |
| Fields of Study | 6 |
| Approval / Accreditation Status..... | 6 |
| Location and Facility Information | 7 |
| University Library..... | 7 |
| Statement on Bankruptcy..... | 7 |
| How to Contact the University | 7 |

ADMISSIONS INFORMATION 8

| | |
|--|----|
| School of Theology | 8 |
| School of Language..... | 8 |
| English Language Proficiency..... | 8 |
| Transfer Policy | 8 |
| International Applicants | 9 |
| Special Admission Requirements..... | 10 |
| Ability-to-Benefit | 10 |
| Review of Documents Prior to Signing | 10 |
| Office of Student Assistance and Relief..... | 10 |

ACADEMIC POLICIES..... 11

| | |
|--|----|
| General Education Courses..... | 11 |
| Grading System..... | 11 |
| Grading Rubric..... | 11 |
| Grade Report | 11 |
| Definition of a Credit Hour | 11 |
| Audit Courses..... | 12 |
| Examination Procedures..... | 12 |
| Attendance Policies and Absences | 12 |
| Academic Dishonesty..... | 13 |
| Leave of Absence..... | 13 |
| Academic Probation and Dismissal Policies..... | 13 |
| Academic Grievances..... | 13 |
| Graduation Requirements: Degree Programs | 14 |

FINANCIAL INFORMATION 15

| | |
|--|----|
| Schedule of Total Charges | 15 |
| Refund Policy | 15 |
| Federal / State Financial Aid..... | 16 |
| Financial Assistance | 16 |
| Student Loans | 16 |
| Student Tuition Recovery Fund (STRF) | 16 |

DISTANCE EDUCATION 18

STUDENT RESOURCES.....20

| | |
|---|----|
| Equipment Available..... | 20 |
| University Library..... | 20 |
| Chapel..... | 20 |
| Computer Lab | 20 |
| Student Housing | 20 |
| Placement Assistance | 20 |
| Opportunities for Ministry and Social Outreach/Services of Students..... | 20 |
| The Purpose, Organization, and Function of Student Government..... | 21 |
| Student Clubs and Organizations..... | 21 |
| Use of Automobiles on Campus | 21 |
| Health Services and Student Insurance | 21 |
| Campus Security | 21 |
| Key Administrative Services..... | 22 |
| Cultural, Educational, and Religious Opportunities..... | 22 |

CURRICULA AND COURSES.....23

| | |
|--|----|
| School of Theology | 23 |
| Bachelor of Arts in Theology (B.A.)..... | 23 |
| Master of Divinity (M.Div.) | 29 |
| Master of Religious Education (M.R.E.) | 34 |
| Doctor of Ministry (D.Min.) | 37 |
| School of Language..... | 39 |
| English as a Second Language..... | 39 |

APPENDIX A41

| | |
|--|----|
| Student Code of Conduct..... | 41 |
| Student Due Process Procedures..... | 42 |
| Family Educational Rights and Privacy Act (FERPA)..... | 43 |
| Privacy of Student Records..... | 43 |
| Catalog Accuracy and Effective Dates | 45 |
| Student Achievement | 45 |
| Questions..... | 45 |

APPENDIX B.....46

| | |
|----------------------------------|----|
| Board of Directors | 46 |
| Administrators..... | 46 |
| Staff | 46 |
| School of Theology Faculty..... | 46 |
| School of Language Faculty | 48 |

ACADEMIC CALENDAR.....49

CAMPUS LOCATION AND MAP.....51

EMERGENCY PLAN.....52

ST. LUKE UNIVERSITY

is a private, non-profit institute of higher education and was founded in 2004 by Dr. Young Dae Kim, with the vision of educating future Christian leaders and medical practitioners who can treat the mind, body, and soul.

On the university's founding, the curriculum was designed to encourage students to follow in the steps of Luke, the author of the Gospel of Luke and the Acts of the Apostles in the New Testament of the Holy Bible. Luke was a doctor, evangelist, historian, and also bilingual. A well-learned man, the university strives to model Luke in his faith and knowledge through the education provided to our students.

Currently, the university offers four programs: Bachelor of Arts in Theology, Master of Divinity, Master of Religious Education, Doctor of Ministry, and certificate in ESL. Distance Education is available for all degree programs.

MISSION STATEMENT

In the spirit of Sola Scriptura, St. Luke University exists to equip students to be decisive leaders who impact the world for Christ through ministry, teaching, and mission.

INSTITUTIONAL OBJECTIVES

Through this Mission Statement, the objectives of St. Luke University are as follows:

- The University is committed to maintaining a Bible-focused and Christ-honoring curriculum.
- The University seeks to produce competent persons in their fields of study.
- The University is devoted to developing servant leaders, exemplifying Christ-like character.
- The University is dedicated to actively engaging both the local community and various cultures through practical training within Christian education.

STATEMENT OF ETHICAL VALUES AND STANDARDS

Mutual Respect in Christ

The ethical standards of St. Luke are guided by an understanding of Scripture and a commitment to its authority regarding all matters of Christian faith and living. All the members of St. Luke—students, faculty, staff, and Board members—should internalize and practice all of the institution's published policies and

ethical standards.

We affirm that the Bible encourages us to make every effort to live in peace and harmony within the Body of Christ. Accordingly, when unethical behaviors or conflicts arise, we are committed to the biblical process outlined in Matthew 18:15-20 towards positive solutions and restoration (1 Thess. 4:3-8; 1 Tim. 4:12).

"Mutual Respect in Christ" is a call to manifest ethical values and standards of St. Luke University. Conduct that denigrates or shows hostility or aversion toward an individual based upon an individual's race, color, religion, national origin, disability, age, sex, marital status, or veteran status or any other basis will not be tolerated. The following five standards demonstrate how it defines our values and conduct our behaviors at St. Luke University.

Academic Integrity

We as faculty and students alike commit to honesty in all aspects of our work. Faculty are responsible for modeling in their lectures and publications the same standards for use of oral and written sources that they expect of students in students' oral and written work.

Academic integrity requires that as faculty:

- we will carefully acknowledge our dependence on the ideas of others, including those of our students, in publications, and as appropriate in lectures and in materials distributed in class;
- we will follow accepted standards in the construction and grading of examinations;
- we will challenge academic dishonesty when it occurs;
- we will seek to assure consistency in applying these standards by consulting with colleagues as we deal with questions and issues about academic integrity within our professional work.

Academic integrity requires that as students:

- we will rigorously follow accepted standards of citation for quoting directly or indirectly from published or unpublished sources;
- we will avoid all forms of plagiarism;
- we will not, in take-home or in-class examinations,
 - copy from the examination papers of other students;

- allow other students to copy our work on exams;
- use materials such as notes or books, including dictionaries, without the express permission of the instructor;
- have another student take an examination for us.

Sexual Harassment

Sexual harassment is the conduct based on sex or of a sexual nature, whether directed toward a person of the opposite or same sex, and may include explicit sexual propositions, sexual innuendos, suggestive comments, sexually oriented jokes, displaying sexually explicit printed or visual material in the absence of a valid educational purpose, and physical contact such as patting, pinching, hugging, or brushing against another person's body.

St. Luke University accepts our responsibility to recognize, to refrain from, and to remedy acts of sexual harassment as stipulated by law. Any person who perceives that they have been a victim of sexual harassment or sexual assault must contact the Director of Student Affairs. The Director will investigate the allegations and take appropriate action to first protect the person who has claimed victim status and then to discipline the offender where proven.

Non-Discrimination

St. Luke University is committed to providing and modeling a learning, working, and living community environment that is free of unlawful discrimination in all of its policies, practices, procedures, and programs.

The university does not discriminate on the basis of race, color, religion, national origin, disability, age, sex, marital status, or veteran status. The University shall adhere to all applicable state and federal regulations.

The university, however, does lawfully discriminate on the basis of sexual conduct that violates its biblically based Institution's Statement of Faith. The university believes that sexual union must be reserved for marriage, which is the covenant union between one man and one woman. The university believes premarital, extramarital, and homosexual forms of explicit sexual conduct to be inconsistent with the teaching of Scripture. Therefore, the university expects members of its community to

abstain from what it holds to be unbiblical sexual practices.

As a religious institution, the university is exempted from certain provisions of the above regulations relating to discrimination on the basis of religion. The university reserves the right to seek, hire, retain, and promote individuals who affirm the Statement of Faith of St. Luke, support the mission and goals of the institution, and whose conduct is consistent with its understanding of Scripture.

Americans with Disabilities Act (ADA)

The University does not discriminate on the basis of disability in its services, programs, or activities. The University does not discriminate on the basis of disability in its hiring or employment practices. The University will make reasonable modifications to policies and procedures to ensure that people with disabilities have an equal opportunity to enjoy programs, services, and activities. To request an auxiliary aid or service for effective communication, or a modification of policies or procedures contact the Director of Administration.

Respect for People and Property

The University expects all the members to demonstrate the highest standard of respect for people and property. The following are examples of behaviors that are not acceptable:

- Dishonesty: The institution regards as unacceptable any lying, misrepresentation, or deception in representations an individual makes about one's self or others in any phase of academic life.
- Injurious or offensive action: Physical assault, infliction of psychological injury, and the spreading of malicious rumors are unacceptable. Prejudicial treatment, persistent profane, or obscene language is subject to disciplinary action.
- Stealing or destruction of property: Theft of or damage to the property of another person or of the institution is unacceptable.
- Purposeful violation of institutional policies: Purposeful violations include, but are not limited to, refusal to comply with contractual arrangements with the university offices or services.

Substance Abuse

The University is committed to maintaining an alcohol and drug-free environment. The university will ensure

that all of its campuses, workplaces, and activities are safe and free from the problems and risks associated with the unauthorized use and abuse of alcohol and the illegal use and abuse of drugs.

The unlawful manufacture, distribution, dispensing, possession or use of alcohol or illicit drugs by any member of the St. Luke community on the institution's property or as part of any of its activities is prohibited.

Laws and Regulations of the U.S. Government

The University also expects to meet and surpass basic laws and regulations of the U.S. government and the U.S. educational department.

PHILOSOPHY OF EDUCATION

The faculty, administrators, and staff of St. Luke University are committed to building a community of learning that educates the whole person for a life of service. We seek to develop our students within a holistic framework covering the spiritual, psychological, intellectual, and social aspects of the person. The education at St. Luke is designed to connect knowledge with action, learning with service.

Teaching and learning at St. Luke are centered on the teachings of the Scriptures and promote a worldview that emphasizes the creation, fall, and redemption of humanity. This worldview directs members of the St. Luke community to foster a concern for the local and global community and a clear sense of their calling in the world.

St. Luke University encourages the faculty, students, and staff to nurture spiritual life in formal and informal ways through the learning of the Gospel, meditating on God's word, and remembering Jesus' sacrifice in all that we do.

STATEMENT OF FAITH

We as faculty, administration, and Board of Directors of St. Luke University annually affirm their agreement with the following doctrinal statement.

- We believe the Bible to be the inspired, the only infallible, authoritative Word of God.
- We believe that there is one God, eternally existing in three persons, Father, Son and Holy Spirit.
- We believe in the deity of our Lord Jesus Christ, in His virgin birth, in His sinless life, in His miracles, in His vicarious death and atonement through His

shed blood, in His bodily resurrection, in His ascension to the right hand of the Father, and in His personal and visible return in power and glory.

- We believe in the present ministry of the Holy Spirit by whose indwelling the Christian is enabled to live a godly life, and by whom the Church is empowered to carry out Christ's great commission.
- We believe that man was created in the image of God, and that he was tempted by Satan, who is the chief adversary of God, and fell, and that, because of the exceeding sinfulness of human nature, regeneration by the Holy Spirit is absolutely necessary for salvation.
- We believe in the bodily resurrection of both the saved and the lost; those who are saved unto the resurrection of life and those who are lost unto the resurrection of damnation.

FIELDS OF STUDY

School of Theology:

- Bachelor of Arts in Theology (B.A.)
- Master of Divinity (M.Div.)
- Master of Religious Education (M.R.E.)
- Doctor of Ministry (D.Min.)

School of Language:

- English as a Second Language (Certificate)

APPROVAL / ACCREDITATION STATUS

This institution is a private institution approved to operate by the California Bureau for Private Postsecondary Education. Approval to operate means the institution is compliant with the minimum standards contained in the California Private Postsecondary Education Act of 2009 (as amended) and Division 7.5 of Title 5 of the California Code of Regulations. For more information, please refer to the **Bureau for Private Postsecondary Education (BPPE)**

Physical Address:

1747 N. Market Blvd., Suite 225
Sacramento, CA 95834

Mailing Address:

P.O. Box 980818
West Sacramento, CA 95798-0818

Phone Number: (916) 574-8900

Fax Number: (916) 263-1897

Accreditation

St. Luke University is a member of the Transnational Association of Christian Colleges and Schools (TRACS), [15935 Forest Road, Forest, VA 24551; Telephone: (434) 525-9539; e-mail: info@tracs.org] having been awarded Reaffirmation I Status as a Category IV institution by the TRACS Accreditation Commission on October 24, 2023. This status is effective as of January 1, 2024, and is good for a period of ten years – through December 31, 2033. TRACS is recognized by the United States Department of Education (USDOE), the Council for Higher Education Accreditation (CHEA), and the International Network for Quality Assurance Agencies in Higher Education (INQAAHE).

LOCATION AND FACILITY INFORMATION

The institution is located at 1460 E. Holt Avenue, Suite 72 in Pomona, California. The institution leases space from The Village at Indian Hill. The Village allows for the institution to use classrooms, a clinic with treatment rooms, faculty offices, library space, student lounge, and kitchen. There are no dormitories in the building.

All on-campus class sessions are coordinated and conducted at this campus location in Pomona.

Equipment Information

Each classroom is equipped with student desks and appropriate whiteboards for use by instructors. Classrooms also contain a desktop computer connected to a projector for in-class presentations by the instructor and students.

The library contains two workstations with internet access to online research resources and desktop applications for completing and printing assignments.

The administrative office has a copier/printer/scanner which administrators, faculty, and students can use.

UNIVERSITY LIBRARY

The purpose of the Library is to provide students, faculty, and staff with the bibliographic resources, research tools, and study environment necessary to develop students' professional acumen as experts in their specific field. The Library exists to facilitate and improve learning by supporting and expanding the instructional capabilities of St. Luke University and providing students with the opportunity to develop information-seeking skills for self-directed studies

and lifelong learning. The university has available over 4,000 reference materials in the campus library. There is a dedicated Internet workstation and a desktop workstation available for students to access for research and academic purposes.

Hours of Operation

The Library is open 9 a.m. – 5 p.m. Monday through Friday.

Mutual Use Agreements

In addition, the institution maintains Reciprocal Borrowing Agreements with Evangelia University, Grace Mission University, and the Presbyterian Theological Seminary in America. The institution also has an Inter Library Agreement with Western University of Health Sciences.

Online Library – LIRN

The institution contracts with the Library and Information Resources Network (LIRN) for an online virtual library. Access to LIRN can be found on the university website and is available to all actively enrolled students.

Public Libraries

There are also three public libraries near the University – Pomona Public Library, and Los Angeles County Libraries in Claremont and La Verne. The University Librarian can provide directions to the libraries and assist in obtaining a library card. Students can also utilize the Open Access Digital Theological Library at oadtl.org.

STATEMENT ON BANKRUPTCY

St. Luke University does not have a pending petition in bankruptcy, is not operating as a debtor in possession, has not filed a petition within the preceding five years, and has not had a petition in bankruptcy filed against it within the preceding five years that resulted in reorganization under Chapter 11 of the United States Bankruptcy Code.

HOW TO CONTACT THE UNIVERSITY

Phone number: (909) 623-0302

Fax number: (909) 623-0480

Website: <http://www.stlukeuniv.edu>

ADMISSIONS INFORMATION

Admission decisions are based upon both objective and subjective criteria. An applicant's previous academic record is an important predictor of his/her ability to succeed in any educational program. A personal interview is required of all applicants.

Admission is granted to applicants who demonstrate the ability to successfully undertake study and research at the university level. Applications will be reviewed by the Chief Academic Officer's office. All factors will be considered in admitting students to the program. Notification of admission will be provided once the student has submitted the required documentation and demonstrates that they have met the minimum requirements.

To apply to the university, submit an application along with the non-refundable application fee.

SCHOOL OF THEOLOGY

Bachelor of Arts in Theology Admission

Requirements:

1. High school graduate, GED, or equivalent.
2. Brief Admissions interview.
3. Pay non-refundable \$150 Application Fee.

Master of Divinity Admission Requirements:

1. Bachelor's degree or equivalent.
2. Brief Admissions interview.
3. Pay non-refundable \$150 Application Fee.

Master of Religious Education Admission

Requirements:

1. Bachelor's degree or equivalent.
2. Brief Admissions interview.
3. Pay non-refundable \$150 Application Fee.

Doctor of Ministry Admission Requirements:

1. M.Div. degree or equivalent.
2. Two years ministry experience after M.Div.
3. Brief Admissions interview.
4. Pay non-refundable \$150 Application Fee.

SCHOOL OF LANGUAGE

English as a Second Language Requirements:

1. High school graduate, GED, or equivalent.
2. English placement exam.
3. Pay non-refundable \$150 Application Fee.

ENGLISH LANGUAGE PROFICIENCY

All students are required to demonstrate English language proficiency through any of the following methods:

1. Submission of score reports from one of the following tests:

| <u>Undergraduate</u> | <u>Minimum Score</u> |
|-----------------------|----------------------|
| TOEFL iBT | 61 |
| IELTS Academic | 5.5 |
| CEFR | B2 |
| Duolingo English Test | 85 |

| <u>Graduate</u> | <u>Minimum Score</u> |
|-----------------------|----------------------|
| TOEFL iBT | 79 |
| IELTS Academic | 6 |
| CEFR | B2 |
| Duolingo English Test | 100 |

2. Prior coursework displaying English proficiency.
3. Completion of the ESL program at St. Luke.

TRANSFER POLICY

All transfer credits must have been earned with a minimum grade of C in undergraduate programs and a minimum grade of B in graduate degree programs.

The student must submit to St. Luke University an official copy of all transcripts of undergraduate or graduate education to be considered for transfer into their St. Luke University program. The student may also be required to submit catalogs from institutions to be used to clarify course work and academic equivalency of units earned for transfer. Once the institution has received official copies of transcripts and additional documents requested by the Chief Academic Officer, the units will be considered for transfer. Course descriptions and objectives will be used where possible to determine course equivalency to St. Luke University courses. The student will be notified within 30 days of submission of documents on transferability of units.

Course work done at institutions that have been approved by the BPPE, or another appropriate and

equivalent state agency, or institutions accredited by an accrediting agency recognized by the U.S.D.O.E. will be considered as equivalent to St. Luke University course work where the course descriptions and/or objectives are similar to St. Luke University courses.

For course work accomplished in institutions outside the U.S., St. Luke University may use standards established by a member of NACES (National Association of Credential Evaluation Service) such as the International Education Research Foundation, Inc., the American Association of College Registrars and Admission Officer, International Academic Evaluators Inc. or the World Educational Services, for institutional equivalency. Where outside institutions are deemed to be equivalent to St. Luke University, course work will be assessed on a similar equivalency level to courses at St. Luke University. Where international institutions are not up to the same level as U.S. institutions as determined by a member of NACES, coursework may be evaluated for transfer as appropriate.

The maximum number of transferable units in accordance 5CCR§71770(b) for each program offered is:

- **B.A.:** Up to 90 Semester units
- **M.Div.:** Up to 18 Semester units
- **M.R.E.:** Up to 9 Semester units
- **D.Min.:** Up to 30 Semester units
- **ESL:** No transfer credits will be granted.

California Code of Regulations (5CCR§71770(b)) and the university's Transfer Credit and Assessment of Prior Learning for Credit Policy stipulates that (a) a maximum of 75% of the units of credit that may be applied to the award of a bachelor's degree may be derived from a combination of any or both of the following: Transferred Units and assessment of Prior Learning Credits. (b) No more than 20% of graduate semester units awarded by another institution may be transferred for credit toward a Master's degree. (c) No more than 30 graduate semester credits awarded by another institution may be credited toward a doctoral degree.

Each request for a transfer of credits must be received by Director of Administration no later than the commencement of classes for new students and by the last semester of their program for current students who have taken one of more courses at another institution, while working towards their

degree at St. Luke University.

Experiential Credits

No credit will be given for prior experiential learning.

Articulation/Transfer Agreements

St. Luke University currently has articulation agreements with the following three universities:

- Grace Mission University
- Evangelia University
- Presbyterian Theological Seminary in America

Transferring Out

NOTICE CONCERNING TRANSFERABILITY OF CREDITS AND CREDENTIALS EARNED AT OUR INSTITUTION:

The transferability of credits you earn at St. Luke University is at the complete discretion of an institution to which you may seek to transfer. Acceptance of the degree or certificate you earn in the educational program is also at the complete discretion of the institution to which you may seek to transfer. If the credits or degree or certificate that you earn at this institution are not accepted at the institution to which you seek to transfer, you may be required to repeat some or all of your coursework at that institution. For this reason, you should make certain that your attendance at this institution will meet your educational goals. This may include contacting an institution to which you may seek to transfer after attending St. Luke University to determine if your credits or degree or certificate will transfer.

INTERNATIONAL APPLICANTS

St. Luke University is authorized under the Student Exchange and Visitor Program (SEVP) to enroll non-immigrant alien students.

Visa services offered include Initial I-20 and Transfer I-20. Associated charges can be found under Financial Information on page 15.

Initial I-20

In addition to the admission requirements, international students must also submit:

- Recent bank statement or Declaration of Financial Support.
- Copy of Passport.
- English proficiency exam (degree program).
- Initial I-20 Request form.
- Pay non-refundable Initial I-20 fee: \$200.

Transfer I-20

For students who have already obtained F-1 Visa:
In addition to the admission requirements, international students must also submit:

- Most recent I-20.
- Recent bank statement or Declaration of Financial Support.
- Copy of Passport.
- Copy of Student Visa or I-797A.
- No additional fees for Transfer I-20.

Once the university has confirmed the legitimacy of the student's transfer, the school will issue the Letter of Acceptance for students admitted. The university will contact the student's former school and send the Letter of Acceptance and Transfer Eligibility Form.

All international students must be aware of their responsibility of maintaining non-immigrant visa status. International students on F-1 visas are required to report to St. Luke University upon arrival to the United States. Additionally, students must maintain updated records with the university for the entire time of their stay at St. Luke University to be in compliance with immigration regulations.

For additional information on F-1 visas, please visit <http://www.uscis.gov/>

Instruction

Instruction in the School of Theology programs are conducted in English.

Students who are unable to demonstrate sufficient proficiency in English will need to enroll in the ESL program.

SPECIAL ADMISSION REQUIREMENTS

The university may allow for Provisional Admissions to students who have submitted evidence of high school completion or equivalent but have not yet submitted Official Transcripts or other required documents. Provisional admit students have until the start of their first term to fulfill all outstanding requirements. Failure to do so may result in the admission offer being rescinded.

Students who are unable to provide evidence of high school completion or equivalent will not be considered for admission.

ABILITY-TO-BENEFIT

The university does not accept the Ability-to-Benefit examination.

REVIEW OF DOCUMENTS PRIOR TO SIGNING

As a prospective student, you are encouraged to review this catalog prior to signing an enrollment agreement. You are also encouraged to review the School Performance Fact Sheet, which must be provided to you prior to signing an enrollment agreement.

OFFICE OF STUDENT ASSISTANCE AND RELIEF

The Office of Student Assistance and Relief is available to support prospective students, current students, or past students of private postsecondary educational institutions in making informed decisions, understanding their rights, and navigating available services and relief options. The office may be reached by calling (888-370-7580) or by visiting (www.osar.bppe.ca.gov).

ACADEMIC POLICIES

GENERAL EDUCATION COURSES

Courses that qualify as general education are those that provide the student with a broad educational experience in the arts and sciences. St. Luke University offers general education in communications, humanities, social science, and natural science areas to provide a broad base of training in support of their bachelor program.

GRADING SYSTEM

Student performance will be evaluated by examination, attendance, classroom participation, special projects, seminars, and research works, etc. Any student in danger of receiving a “D+” or below for the course is responsible for arranging with the instructor a plan for improving his/her grade. Courses may be repeated for grades of “D+” or below for bachelors and masters programs and “C+” or below for the doctorate program. Any student receiving an incomplete grade “I” will be given up to one semester to complete the course. Failure to complete the course within the required time will result in an “F” for the course.

Grade points are based on the standard 4.0 scale. The following grades receive credits and incur grade points that impact the final grade point average.

| Grade | Point Rate | Grade | Point Rate |
|-------|------------|-------|------------|
| A+ | 4.00 | C+ | 2.30 |
| A | 4.00 | C | 2.00 |
| A- | 3.70 | C- | 1.70 |
| B+ | 3.30 | D+ | 1.30 |
| B | 3.00 | D | 1.00 |
| B- | 2.70 | D- | 0.70 |
| | | F | 0.00 |

The following grades may appear on a transcript but do not incur grade points and do not impact the grade point average.

| Grade | Explanation |
|-------|-------------|
| CR | Credit |
| NC | No Credit |
| I | Incomplete |
| IP | In Progress |

| | |
|----|--|
| W | Withdrawal after 60% point of the term |
| FN | Failure – Nonattending |

GRADING RUBRIC

The following rubric may be used in grading written assignments.

Excellent. The level of work submitted, research, thinking, and communication are superior. You understand and interact with the theories, integrate it with your topic, and have shown how it is applicable in the context you have chosen.

Good. The level of work submitted, research, thinking, and communication are satisfactory. You appear to have read the assigned literature and have made progress in showing how it is applicable in the context you have chosen, though your work could be stronger in both areas.

Satisfactory. The level of work submitted, research, thinking, and communication are acceptable. It appears you understand the reading and have made a start in showing how it is applicable in the context you have chosen.

Poor. The level of work submitted, research, thinking, and communication are not acceptable. You have read some of the theories and have started to consider how it is applicable in the context you have chosen, but you have not demonstrated either clearly.

GRADE REPORT

At the end of each semester, students’ academic standing and report of grades achieved while in attendance at the university are available after the end of the semester on the student management system.

Grades submitted by instructors after completion of courses are considered final. Any petition for grade changes due to special circumstances must come from instructors and will be considered on case-by-case basis by the Chief Academic Officer and the concerning instructor. Completion of coursework and payment of fees does not guarantee graduation from the University.

DEFINITION OF A CREDIT HOUR

Credit hours used in the context of the theology programs are defined in semester units and hours of

instruction per week. One credit hour equals one semester unit and requires one hour of in-class instruction per week and two hours of at-home work.

A typical full-time undergraduate student will enroll in 12 credit hours per semester which totals 12 semester units. A typical full-time graduate student will enroll in 8 credit hours per semester which totals 8 semester units.

AUDIT COURSES

Students who wish to audit an on-campus class may do so if they have previously taken and passed a course at St. Luke University. Audit and other non-credit courses are not included in fulfilling the requirements for graduation.

EXAMINATION PROCEDURES

Requirements for midterms and other examinations during the term (written and oral), term papers, reports, projects and other student activities are assigned by each instructor. Make-up examinations, re-tests, late submission of reports or other special arrangements are made only by the instructor, and only at the instructor's option. Either the instructor or the University can administer a make-up examination or re-test, after the student has received approval from the Chief Academic Officer and the concerning instructor.

No instructor is required to offer make-ups, re-tests, or to accept late submissions of work. It is fully within the instructor's authority to give a failing grade for any examination a student does not take on time, or for any report or other assignment a student fails to submit on time.

Failing an Examination

An instructor may recommend that a re-test be permitted. The instructor must indicate, in writing, on the Grade Report to the Chief Academic Officer that a re-test is recommended based on compelling evidence that the student failed the examination due to extenuating circumstances. The re-test, if approved by the Chief Academic Officer, shall be scheduled in agreement with and at the convenience of, the instructor. The Registrar will notify the student of the decision of the Chief Academic Officer. The examination must be completed before the start of the next semester.

In the interim, a grade of Incomplete (I) will be

recorded for the course.

Failure to Attend an Examination

Without prior authorization by the instructor or without an excuse approved by the instructor, failing to attend any examination shall result in a failing grade. No make-up examination can be authorized. The student must repeat the course, paying full tuition.

A student may be excused from taking an examination as scheduled by reason of childbirth, documented illness or injury, death in the immediate family, or other emergency situations acceptable to the instructor. Students must request a make-up examination by speaking with the instructor of the course. The student will usually be required to submit acceptable proof of inability to attend the examination.

ATTENDANCE POLICIES AND ABSENCES

All work missed due to absence or lateness must be made up to the satisfaction of the instructor in order to receive credit for the course.

Instructors may, at their own option, arrange for make-up examinations, in cases of excused absence. Instructors are not required to provide make-ups for examinations missed due to unexcused absence or lateness and will normally assign a failing grade for that examination.

Attendance policy is determined, for the most part, by the individual faculty member for each course. Policy on class attendance shall be announced by the instructor at the first day of class. However, the university does maintain an Excessive Absence Policy. Excessive absence is defined as absences in excess of 40% of scheduled course meeting times. Instructors shall report excessive absences to the Chief Academic Officer. The student may be asked to appear before the Chief Academic Officer and the instructor. Failure to appear at the meeting may result in a failing grade and may also result in suspension or dismissal from the university.

If the excessive absences are classified as excused, the Chief Academic Officer may recommend to the instructor that make-up work be arranged, or that the student be suspended from the class with no penalty grade assigned.

If the excessive absences are not classified as excused, the Chief Academic Officer may:

- Place the student on probation, giving provisions for return to good standing;
- Suspend the student for the remainder of the class meetings with no penalty grade assigned. Any tuition refund due shall be that provided for in university refund policies. The date of notice of termination of study, as required for all tuition refunds, shall be the date of the Chief Academic Officer's decision.
- Suspend the student for the remainder of the class meetings with a failing grade assigned.
- Recommend to the President that the student be dismissed from the University.

ACADEMIC DISHONESTY

Individual instructors, in cases of academic dishonesty in class, may fail a student for that examination, activity or course. The instructor may refer the circumstance to the Chief Academic Officer for review and further action. The Chief Academic Officer may fail a student in a test, fail a student in a course, or expel a student for cheating or plagiarism. Cheating includes, but is not limited to, looking at another person's examination paper, using unauthorized notes in an exam, and/or going to a restroom during an exam and consulting notes or references. Cheating includes plagiarism.

Plagiarism is the presentation or representation of another person's work as one's own, such as presenting ideas or words of a source without documenting the source. Cheating is inconsistent with the academic excellence St. Luke represents and will be dealt with vigorously.

All work submitted as original are subject to verification with available plagiarism checking tools.

LEAVE OF ABSENCE

Student desiring a Leave of Absence must contact the institution and request a leave in writing. Leaves will be granted on a case-by-case basis for a maximum of up to 1 year. Students who do not return to school from their leave of absence will be dropped from the institution and a refund will be calculated at that time. Students who do not return from their leave of absence must submit a new application for admission to the University.

ACADEMIC PROBATION AND DISMISSAL POLICIES

Scholastic probation is an identification of students whose scholastic performance is below university standards. Academic suspension is an identification of students whose scholastic performance remains below university standards for two consecutive semesters. Below is a general classification of students based on credit hours with the standard grade point average the semester indicated.

1. A student who fails to meet these minimum standards for one semester is placed on academic probation.
2. If he/she fails to meet these minimum standards for two consecutive semesters, he/she is placed on academic suspension.

On Academic Probation: A student may continue at the University pending improvement in his/her academic standing.

On Academic Suspension: A student is required to remain out of the University for one regular semester. His/her record will be stamped academic suspension.

On Academic Dismissal: Students must respect the "Student Code of Conduct" policies stated in Appendix A.

The President of the University, at his/her discretion and prior to recommendations or action of the Chief Academic Officer, in the interests of the University may place on probation, suspend, or dismiss a student for one or more of the causes stated in the "Student Code of Conduct". Any adjustment of fee or tuition shall be those required by law. Please consult Appendix A for more information on proper student conduct and behavior.

ACADEMIC GRIEVANCES

The University may seek informal resolution when allegations of unlawful discrimination or harassment or any other concern is brought to the administration's attention. If an informal resolution does not result, a formal process may be initiated by submitting a complaint/grievance to the Chief Academic Officer. Initially, concerns may be communicated orally; however, they should be submitted in writing before any formal review takes place. The written complaint should specify the University policy violated and all relevant factual details.

The Chief Academic Officer shall read the complaint, and if it warrants further investigation, then a copy of the complaint should be forwarded to the person against whom the complaint is made ("respondent"). If the allegations would not constitute a violation of a University policy, then the Chief Academic Officer should inform the grievant in writing that the allegations are not subject to further investigation.

The respondent shall be given 14 calendar days from receipt of the complaint to return a written response to the relevant Faculty, who then shall initiate a reasonable investigation into the matter. The investigation may include meeting with the parties, talking with witnesses, and reviewing any supporting documents. A grievant may elect to withdraw a formal complaint at any time; however, the University reserves the right to investigate all complaints in order to protect the interests of the University and its community.

Within a reasonable time, the Chief Academic Officer shall make a decision based on the formal complaint, response, and any other relevant information. This decision shall be in writing and shall consist of factual findings, conclusions, and a remedy if one is appropriate. All parties shall receive a copy of the decision.

Any party may submit a written request for appeal of the decision to the president of the University within 14 calendar days from receipt of the decision. The request for appeal must specifically set forth all grounds for appeal. The non-appealing party must be given the opportunity to respond in writing to the request for appeal. Within a reasonable time, the president shall make a decision based on the complaint, response, decision, request for appeal, any response to the appeal, and any meeting the president held in regard to the appeal. The decision of the president shall be final. All parties shall receive a copy of the president's decision.

All written decisions made and materials produced in a grievance conducted under this procedure shall be retained by the Chief Academic Officer for at least five years from the date that the final decision was issued.

A student or any member of the public may file a complaint about this institution with the Bureau for Private Postsecondary Education by calling (888) 370-7589 or by completing a complaint form, which can

be obtained on the bureau's internet Web site <http://www.bppe.gov>:
Bureau for Private Postsecondary Education
1747 N. Market Blvd., Suite 225
Sacramento, CA 95834

Students may also contact TRACS Accrediting Agency by completing the TRACS Complaint Form found on http://tracs.org/TRACS_Publications.html and submitting to:

President
Transnational Associations of Christian Colleges and Schools
15935 Forest Road
Forest, VA 24551

GRADUATION REQUIREMENTS: DEGREE PROGRAMS

Students must satisfy the following requirements, file a petition and pay any outstanding debts owed to the university.

B.A. in Theology requires 120 semester units of coursework to be completed with a minimum GPA of 2.0.

Master of Divinity requires 96 semester units of coursework to be completed with a minimum GPA of 2.0 and the passage of the Comprehensive Bible Exam after completing all coursework.

Master of Religious Education requires 48 semester units of coursework to be completed with a minimum GPA of 2.0 and the completion of a Capstone Project after completing all coursework.

Doctor of Ministry requires 42 semester units of coursework to be completed with a minimum GPA of 3.0 including the completion of a dissertation.

All degrees must be completed within 7 years.

Graduation with Honors

Candidates for graduation whose work has been of superior quality are honored at the commencements exercise as indicated as follows:

| | |
|-----------------|---------------------------------|
| Cum Laude | Cumulative GPA of 3.5 or higher |
| Magna Cum Laude | Cumulative GPA of 3.7 or higher |
| Summa Cum Laude | Cumulative GPA of 3.9 or higher |

FINANCIAL INFORMATION

SCHEDULE OF TOTAL CHARGES

All tuition and fees must be paid in U.S. dollars (\$). Students are required to pay tuition and fees at the time of registration for each term.

| Program | Per unit | Per term Full-Time Tuition | *Entire Program |
|---------|----------|-------------------------------|--------------------|
| B.A. | \$200 | \$2,400 (12 units) | \$24,000 |
| M.Div. | \$280 | \$2,240 (8 units) | \$26,880 |
| M.R.E. | \$280 | \$2,240 (8 units) | \$13,440 |
| D.Min. | \$320 | \$1,920 (6 units) | \$13,440 |
| ESL | - | \$2,000/level | \$12,000 |

*Total charges for the entire education program are estimated as tuition is subject to annual revision.

The B.A., M.Div., M.R.E., and D.Min. program students are charged tuition for each semester. ESL students are charged tuition for each level.

Fees

| | |
|---|--|
| Textbooks | varies |
| I.D. Card fee (per request) | \$20 |
| Late Registration fee (per occurrence) | \$50 |
| Graduation fee | \$300 |
| Official Transcript (Rush fee add \$50) | \$40 |
| Unofficial Transcript (Rush fee add \$50) | \$20 |
| Certificate of Enrollment (Rush fee add \$50) | \$30 |
| Record of Attendance (Rush fee add \$50) | \$30 |
| Degree/Certificate Replacement fee | \$50 |
| Returned Check fee | \$50 |
| Initial I-20 fee | \$400 |
| I-20 Processing fee | \$500 |
| I-20 Reissue fee | \$50 |
| I-20 Transfer Out fee | \$500 |
| Certified/Express Mailing fee | Postage + \$100 |
| STRF (non-refundable) (see page 16) | \$0.00 per \$1,000 of institutional charges |

REFUND POLICY

Student's Right to Cancel

The student has the right to cancel the enrollment agreement and obtain a refund of charges paid through attendance at the first class session, or the seventh day after enrollment, whichever is later. To cancel the enrollment agreement, students can come

to the University office or mail a written notice of cancellation to the University at 1460 E. Holt Ave. Suite 72, Pomona, CA 91767. Students may also email registrar@stlukeuniv.edu. The postmark date or the date the email is sent will be used as the request date.

Dropping a Course

Students can drop courses from their schedule up to two weeks after the start of the semester without penalty. Refunds will be issued for the full difference in the change in tuition. After the first two weeks of the start of the semester, refunds will be prorated. Classes dropped after the 60% point of the semester are not eligible for refunds and the student will receive a grade of W (withdrawal) on their transcript. To drop a course, students meet with the Registrar to discuss and make changes to their schedule.

Withdrawing

Withdrawing from the university may be either voluntary or involuntary.

Students who seek voluntary withdrawal must meet with the Registrar and submit a written notice indicating voluntary withdrawal. Students who have registered for the active term may be eligible for a refund. Prior to the start of the term, any tuition paid will be fully refunded. After the first two weeks of the start of the term and up to the 60% point of the term, refunds will be prorated based on the day of the term. After the 60% point, no refunds will be issued and the student will automatically receive a grade of W (withdrawal) on their transcript for their courses.

Involuntary withdrawals occur primarily for failing to register for courses for the active semester or for violations of the Student Code of Conduct. Other reasons may apply.

Refund Eligibility

Students who are eligible for a refund will have their refunds processed and issued within five business days.

If the student has received federal student financial aid funds, the student is entitled to a refund of the moneys not paid from federal student financial aid program funds.

Refund Example

This refund example is based upon a student dropping a 4-unit course for a semester with a total tuition charge of \$200 per unit or \$800 for the course

and the course offered for 16 weeks and the student dropping at the midpoint or 50% completion point of the course.

\$800 tuition paid for the course X 8 weeks/16 weeks in the semester = \$400 refund due for the course.

If the student paid \$500 for the course on the total due of \$800 for the course. To determine the refund, subtract the refund due of \$400 from \$500 paid for the course and this equals the amount due to the student or \$100 due on a refund for the 4-unit course. If the amount is a negative number after subtracting the refund due from the total paid, that is the amount the student still owes for the course.

FEDERAL / STATE FINANCIAL AID

St Luke University does not participate in federal or state student financial aid programs.

FINANCIAL ASSISTANCE

The University awards scholarships or grants to students who require financial assistance or demonstrate academic excellence in both coursework and attendance. Scholarships and grants are awarded on a per term basis. A variety of factors including, but not limited to, academic merit, attendance, and availability of funds are considered.

STUDENT LOANS

If a student obtains a loan to pay for an educational program, the student will have the responsibility to repay the full amount of the loan plus interest, less the amount of any refund.

If the student is eligible for a loan guaranteed by the federal or state government and the student defaults on the loan, both of the following may occur:

- The federal or state government or a loan guarantee agency may take action against the student, including applying any income tax refund to which the person is entitled to reduce the balance owed on the loan.
- The student may not be eligible for any other federal student financial aid at another institution or other government assistance until the loan is repaid

STUDENT TUITION RECOVERY FUND (STRF)

The State of California established the Student Tuition Recovery Fund (STRF) to relieve or mitigate economic

loss suffered by a student in an educational program at a qualifying institution, who is or was a California resident while enrolled, or was enrolled in a residency program, if the student enrolled in the institution, prepaid tuition, and suffered an economic loss. Unless relieved of the obligation to do so, you must pay the state-imposed assessment for the STRF, or it must be paid on your behalf, if you are a student in an educational program, who is a California resident, or are enrolled in a residency program, and prepay all or part of your tuition.

You are not eligible for protection from the STRF and you are not required to pay the STRF assessment, if you are not a California resident, or are not enrolled in a residency program.

It is important that you keep copies of your enrollment agreement, financial aid documents, receipts, or any other information that documents the amount paid to the school. Questions regarding the STRF may be directed to the Bureau for Private Postsecondary Education, 1747 North Market Blvd., Suite 225, Sacramento, California, 95834, (916) 574-8900 or (888) 370-7589.

To be eligible for STRF, you must be a California resident or enrolled in a residency program, prepaid tuition, paid or deemed to have paid the STRF assessment, and suffered an economic loss as a result of any of the following:

- 1.The institution, a location of the institution, or an educational program offered by the institution was closed or discontinued, and you did not choose to participate in a teach-out plan approved by the Bureau or did not complete a chosen teach-out plan approved by the Bureau.
- 2.You were enrolled at an institution or a location of the institution within the 120 day period before the closure of the institution or location of the institution, or were enrolled in an educational program within the 120 day period before the program was discontinued.
- 3.You were enrolled at an institution or a location of the institution more than 120 days before the closure of the institution or location of the institution, in an educational program offered by the institution as to which the Bureau determined there was a significant decline in the quality or value of the program more than 120 days before closure.
- 4.The institution has been ordered to pay a refund by the Bureau but has failed to do so.

5.The institution has failed to pay or reimburse loan proceeds under a federal student loan program as required by law, or has failed to pay or reimburse proceeds received by the institution in excess of tuition and other costs.

6.You have been awarded restitution, a refund, or other monetary award by an arbitrator or court, based on a violation of this chapter by an institution or representative of an institution, but have been unable to collect the award from the institution.

7.You sought legal counsel that resulted in the cancellation of one or more of your student loans and have an invoice for services rendered and evidence of the cancellation of the student loan or loans.

To qualify for STRF reimbursement, the application must be received within four (4) years from the date of the action or event that made the student eligible for recovery from STRF.

A student whose loan is revived by a loan holder or debt collector after a period of noncollection may, at any time, file a written application for recovery from STRF for the debt that would have otherwise been eligible for recovery. If it has been more than four (4) years since the action or event that made the student eligible, the student must have filed a written application for recovery within the original four (4) year period, unless the period has been extended by another act of law.

However, no claim can be paid to any student without a social security number or a taxpayer identification number.

DISTANCE EDUCATION

All student policies, responsibilities, rights, and requirements apply to all students enrolled in St. Luke University regardless of on-campus or online registration status.

Policies specific to online students or courses may be found in this section or in each course syllabus.

Programs Offered

Degree programs in the School of Theology may be offered through distance education. Courses and programs are subject to availability.

Orientation

Students enrolled in a distance education program are required to complete the New Student Orientation and the Distance Education Orientation. Both are available in the student portal.

Admissions Process

The admissions requirements for Distance Education students are the same as on-campus students. Once the application is submitted, Distance Education students will be contacted to confirm eligibility. Applicants who reside in California will be required to complete an Enrollment Agreement and Student Performance Fact Sheet. All students are required to sign a Foundational Statements form. Once admitted, student logins will be provided. The New Student Orientation is required and is available in the student portal.

Program Length and Costs

Distance education programs and courses are offered in conjunction with on-campus courses. As such, the program length and costs are the same.

Student Eligibility

Distance education is only offered to students residing within California or outside the United States. Students who live within the United States but who do not reside within California are not eligible for distance education at this time.

Student Portal

The student portal is found on the university website.

Distance education courses require reliable access to the Internet as distance education students will view all lecture and course materials and also submit all assignments and complete all exams through the student portal. You may login with the provided login information given to you upon admission to the university.

Registration of Courses

Students may view the course schedule within the student portal two weeks before the start of the semester. Contact the registrar at registrar@stlukeuniv.edu to complete registration. The registrar may also assist in withdrawing or dropping courses.

Online Library – LIRN

The online library is available 24 hours a day seven days a week. Login into the student portal, to access the library. Use the SLU website and the Library page at www.stlukeuniv.edu to obtain the latest information.

Academic Standards

Distance education courses are required to be of comparable academic rigor and challenge as on-campus traditional courses. As such, the same requirements given to on-campus students are expected to be met by distance education students. All work submitted as original are subject to verification with available plagiarism checking tools.

Transfer of Credit

Policies regarding transfer of credit are the same for all students.

Verification of Student Identification

Distance education courses are accessible through the student portal. All students enrolled in distance education courses are issued a unique login consisting of username and password. The user ID is required for students to access the student portal for all courses. The student portal is a secure environment where faculty members post course materials, assignments and exams, provide chat and discussion forums for their courses, and where students participate in forum discussions, chat sessions, upload assignments, and take quizzes and exams.

Student Privacy

Student privacy and the policies governing all student records are enforced regardless of student classification as pertaining to on-campus or online

instruction. Federal and state policies are to be applied equally for all students. The privacy of individual students' assessments and grades is maintained within the learning management system. Students are restricted to faculty-published information in courses for which they have enrolled and student-group related activities in a given course. Guest access to courses is not allowed. Course and user profile information is not visible to anyone without an account.

The combination of user ID and password identifies students to the system on each visit. All users should understand the following:

- All parties accept responsibility for the security of their personal passwords.
- Private student information is separated from others within the course management system and protected from outside intruders through limited student group permissions.
- Private faculty information is protected from student views within the course management system and from outside intruders through typical faculty group permissions.

Definition of a Credit Hour

Distance education courses require a combined three hours of online instruction and interaction, reading, and research for one credit hour per week. Online instruction can take the form of pre-recorded or live streaming video or audio. Online interaction includes but is not limited to participation in discussion forums and group projects. Assignments may include lecture summaries, papers, and projects. Exams may also be part of the overall grade and may include midterm and final exams. Detailed grading information may be found in each course syllabi.

Attendance

Attendance in distance education courses are defined as weekly submission of required assignments as specified by the instructor in the course syllabi. Failure to submit assignments or participate within the allotted time will be viewed as an absence under the university attendance policy.

Evaluation of Submitted Work

Student work submitted through the student portal are evaluated and emailed to the student within seven days.

Student Services

Student services and events that occur on-campus

may be available for attendance through Zoom. Information regarding particular services and events will be announced prior to the date of the event.

Student Code of Conduct

All students enrolled in a course or program at St. Luke University are expected to follow the Student Code of Conduct. Failure to abide by the standards of this university may result in disciplinary action.

Student Complaints

All students, whether on-campus or online, are afforded the same student rights.

Academic Assistance and Faculty Office Hours

The faculty and/or instructor of the distance education course may be contacted from within the course page in the student portal. Faculty may also be contacted via email or other contact information provided on the course syllabus. The faculty may inform the student of possible restrictions to academic assistance or office hours

For questions regarding the academic schedule or adding and dropping courses, please contact the registrar at registrar@stlukeuniv.edu.

For questions regarding the tuition and payment of fees, please contact the bursar at bursar@stlukeuniv.edu.

Technical Assistance and Troubleshooting

If there are any issues or problems at any point during the semester, students may request help directly to the Distance Education Director, or Vice-President.

Distance Education Director
Mr. David Kim

University Contact

Email: online@stlukeuniv.edu
Phone number: (909) 623-0302
Fax number: (909) 623-0480
Website: <http://www.stlukeuniv.edu>

STUDENT RESOURCES

St. Luke University seeks to foster a community of learning and faith. It is the University's vision to be a community that grows both in academic and spiritual life. The central focus of the University's leadership is to build and maintain a caring environment for all students as well as staff, faculty, and other members of the University community.

St. Luke University encourages students to nurture spiritual life in formal and informal ways through the practice of prayer, regular devotions, and expressions of faithfulness, justice, and mercy. The Director of Student Affairs is available to assist with all non-academic concerns students may have.

EQUIPMENT AVAILABLE

Each classroom is equipped with student desks and appropriate whiteboards for use by instructors. Classrooms also contain a desktop computer connected to a projector for in-class presentations by the instructor and students.

The administrative office has a copier/printer/scanner which administrators, faculty, and students can use.

UNIVERSITY LIBRARY

The purpose of the Library is to provide students, faculty, and staff with the bibliographic resources, research tools, and study environment necessary to develop students' professional acumen as experts in their specific field. The Library exists to facilitate and improve learning by supporting and expanding the instructional capabilities of St. Luke University and providing students with the opportunity to develop information-seeking skills for self-directed studies and lifelong learning. The university has available over 4,000 reference materials in the campus library.

Hours of Operation

The Library is open 9 a.m. – 5 p.m. Monday through Friday.

Library Agreements

In addition, the institution maintains Reciprocal

Borrowing Agreements with Evangelia University, Grace Mission University, and the Presbyterian Theological Seminary in America. The institution also has an Inter Library Agreement with Western University of Health Sciences.

Online Library – LIRN

The institution contracts with the Library and Information Resources Network (LIRN) for an online library.

Public Libraries

There are also three public libraries near the University – Pomona Public Library, and Los Angeles County Libraries in Claremont and La Verne. The University Librarian can provide directions to the libraries and assist in obtaining a library card. Students can also visit the nearby Claremont School of Theology Library to study and research but cannot check out any materials.

CHAPEL

The university holds chapel services at the beginning of Fall and Spring semesters. The chapel service is open to all students and is announced two weeks prior to the date of services.

COMPUTER LAB

The computer lab contains two desktop computers with programs to support students' academic work, including Microsoft Office.

STUDENT HOUSING

The institution does not have dormitory facilities under its control. Rent in the surrounding areas for a studio apartment is around \$1,000, one-bedroom around \$1,200, and two-bedroom housing is around \$1,500. The University does not aid students in finding housing and has no responsibility to find or assist students in finding housing.

PLACEMENT ASSISTANCE

St. Luke University seeks to provide special assistance to students who enrolled in the university courses. Although employment cannot be guaranteed, career placement assistance is available through job search advice and referrals to prospective employers.

OPPORTUNITIES FOR MINISTRY AND SOCIAL OUTREACH/SERVICES OF STUDENTS

St Luke University offers student services programs

designed to meet the needs and circumstances of predominantly working, commuter, adult students, typically engaged in substantial ministry and family commitments. Student services include:

1. New student orientation
2. Spiritual development through opportunities for worship, service, and fellowship
3. Student support including personal advising and prayer
4. Student government through SLU Student Council meetings
5. Academic advising
6. Career counseling in the form of resume writing and interview assistance, ministry and employment opportunities, ministry internships, and practicums
7. Financial aid including various scholarship opportunities
8. Copies of *Our Daily Bread* for daily devotionals

Spiritual development is a core function of our academic instruction and is interwoven in our coursework and student interactions. Spiritual development is provided through scheduled opportunities for worship and fellowship (conducted twice a year at the beginning of each semester for each class) devotionals; ministry development through internships and supervised ministry; class potluck. Students are encouraged to volunteer in available ministry programs at the local or home church.

The Student Services page on the website provides all appropriate documents (including the Student Handbook), new student orientation presentation, ministry and employment opportunities, links to professional development resources, devotions and updates, Student Council updates, and links to student support and advising. These web-based services are available to all students regardless of location.

THE PURPOSE, ORGANIZATION, AND FUNCTION OF STUDENT GOVERNMENT

The student government is to be regarded as the singular voice for student concerns, to advocate for student rights, and to maintain a strong student body. Student government is provided through the St. Luke Student Council which meets once per semester. The Student Council provides student input, discussion, organization, concerns, and prayer regarding SLU

functions and activities to the university administration. Council updates are posted on the SLU website.

STUDENT CLUBS AND ORGANIZATIONS

Students are encouraged to form student clubs and organizations. All clubs and organizations need to first be reviewed and approved by the Director of Student Affairs for appropriateness and to determine if its contribution to the mission and objectives of the university.

USE OF AUTOMOBILES ON CAMPUS

The campus is located within The Village of Indian Hill complex in Pomona, California. Use of automobiles is only permitted in the parking area and street ways. Any other unauthorized use of an automobile may be in violation of local, state, and federal laws.

HEALTH SERVICES AND STUDENT INSURANCE

The university houses an on-campus Asian medicine clinic that offers diagnosis, acupuncture, and herbal medicine at discounted rates for students in need of preventative or general checkup medical services. In case where immediate medical attention is required:

Paramedics: 9-1-1 (**emergencies only**)
Rite Medical Clinic Urgent Care: (909) 620-8500
502 W. Holt Ave.
Pomona, CA 91768

Acupuncturist (non-emergencies):
Dr. Young Kim, L.Ac.

Students are encouraged but not required to carry their own health insurance. The university does not offer health insurance at this time.

Students may obtain health insurance coverage through Covered California at:
<https://www.coveredca.com>.

International students may obtain health insurance coverage through ISO Insurance at:
https://www.isoa.org/st_luke_university.

CAMPUS SECURITY

Pomona Police Department: 9-1-1 (**emergencies only**)
Campus Security (909) 784-6651

Director of Administration (non-emergencies):

Ms. Jung Kim

Director of Student Affairs (non-emergencies):

Rev. Shin Woo Lee

KEY ADMINISTRATIVE SERVICES

Pastoral Care

St Luke University seeks to build and maintain a community of learning and faith. Pastoral care is a responsibility of the entire University community. Supportive relationships among community members are the bedrock of holistic care in the seminary. All faculty members (most of whom are ordained pastors) are expected to be concerned with the student's spiritual and emotional life.

CULTURAL, EDUCATIONAL, AND RELIGIOUS OPPORTUNITIES

The university has a student body consisting of many students from China and Korea. There is an opportunity for cultural exchange within the university setting, in which stories of their faith can also be shared.

CURRICULA AND COURSES

SCHOOL OF THEOLOGY

The School of Theology offers four degree programs: Bachelor of Arts in Theology (B.A.), Master of Divinity (M.Div.), Master of Religious Education (M.R.E.), and Doctor of Ministry (D.Min.).

The School of Theology operates under a 15-week semester schedule.

BACHELOR OF ARTS IN THEOLOGY (B.A.)

The Bachelor of Arts in Theology (B.A.) is an academic undergraduate degree program with General Education and Biblical-Theological Studies that will enhance students’ knowledge and effectiveness to prepare them to serve and lead in the church and the world.

Program Objectives

1. To equip students to develop a biblical worldview and to exhibit the Christian faith in contemporary culture.
2. To train students to analyze complex situations constructively through critical reflection.
3. To prepare students to provide instruction of the biblical texts based on the principle of Sola Scriptura.
4. To develop skills in interdisciplinary analyses and integration of various subjects in both written and oral presentations.
5. To prepare students to become servant leaders following the example of Christ.

Program Learning Outcomes

1. Define and articulate a Christian worldview in a multi-cultural and multi-religious environment.
2. Understand and explain the biblical text based on the principle of Sola Scriptura.
3. Practice servant leadership in their various professional fields and ministry contexts.
4. Communicate interdisciplinary and integrative analyses in both written and oral presentations.
5. Demonstrate problem-solving skills utilizing critical and constructive thinking.

Students who successfully complete this program

should be prepared to serve as:

| Standard Occupational Classification Codes | |
|---|---|
| 21-2011 | Clergy |
| 21-2022 | Directors, Religious Activities/Education |
| 21-2099 | Religious Workers, All Other |

Program Requirements

The program requires 120 semester units of coursework to be completed with a minimum GPA of 2.0. Degree must be completed within 7 years.

General Education (32 semester units)

| | |
|---|----|
| Communications..... | 4 |
| GE 101 English I | 4 |
| Humanities..... | 8 |
| GE 111 Literature I | 4 |
| GE 120 Introduction to Philosophy | 4 |
| Social Sciences | 4 |
| GE 140 Introduction to Psychology | 4 |
| Natural Sciences | 4 |
| GE 160 Introduction to Physical Science | 4 |
| Electives | 12 |
| GE 102 English II | 4 |
| GE 112 Literature II | 4 |
| GE 130 Introduction to Sociology | 4 |
| GE 151 World History I | 4 |
| GE 152 World History II | 4 |
| GE 170 Introduction to Health Science | 4 |

Biblical Studies (28 semester units)

| | |
|--|---|
| BT 200 Introduction to the Bible | 4 |
| OT 310 Introduction to Pentateuch | 4 |
| OT 360 Introduction to the Holy Writings | 4 |
| OT 370 Introduction to the Prophets | 4 |
| NT 310 Introduction to Gospels | 4 |
| NT 330 Introduction to Pauline Epistles | 4 |
| NT 340 Introduction to Common Epistles | 4 |

Theology (12 semester units)

| | |
|--|---|
| TH 200 Foundations of Christian Theology | 4 |
| TH 350 Church History Survey | 4 |
| TH 380 Christian Ethics | 4 |

Ministrant Theology (4 semester units)

| | |
|---|---|
| MN 410 Foundations of Christian Education | 4 |
|---|---|

Electives (44 semester units)

| | |
|------------------------------|---|
| LT 201 Basic Biblical Hebrew | 4 |
|------------------------------|---|

| | |
|--|---|
| LT 202 Basic Biblical Greek | 4 |
| OT 200 Introduction to the Old Testament | 4 |
| OT 320 Introduction to Historical Books | 4 |
| OT 330 Wisdom Literature | 4 |
| OT 340 Introduction to Major Prophets | 4 |
| OT 350 Introduction to Minor Prophets | 4 |
| NT 200 Introduction to the New Testament | 4 |
| NT 321 Acts | 4 |
| NT 350 Introduction to Johannine Epistles | 4 |
| NT 351 Survey of Revelation | 4 |
| TH 400 Gospel & Culture | 4 |
| TH 452 History of Christian Thought | 4 |
| TH 460 Introduction to Comparative Religions | 4 |
| TH 470 Introduction to Hermeneutics | 4 |
| MN 420 Introduction to Worship & Liturgy | 4 |
| MN 421 Introduction to Spirituality Training | 1 |
| MN 430 Children’s Ministry | 4 |
| MN 440 Youth Ministry | 4 |
| MN 460 Principles of Homiletics | 4 |
| MN 471 Evangelism Field Trip | 2 |
| MN 480 Field Ministry | 4 |
| MN 490 Christian Leadership | 4 |

Course Descriptions

(each course is offered once every two years)

BT 200 Introduction to the Bible (4)

Lecture: 60 hours

Prerequisite: None

This course is an introduction to the contents, structure and history of the Bible. Students will learn a basic foundation for understanding and applying the message of the Bible. The importance of the Bible as a witness to the life and faith of ancient Israel and earliest Christianity will be emphasized.

GE 101 English I (4)

Lecture: 60 hours

Prerequisite: None

This course is designed to develop reading, speaking, and writing skills in English. It will teach students to engage in current issues through reading newspapers, magazine articles, the Bible, short stories, and nonfiction writings and participating in in-class discussions. It is an important skill to read, analyze, and engage in a discussion to express individual’s understanding of a particular topic. The dialectical learning is a crucial aspect of learning formation for any person that seeks to develop communication skills. Dialectical learning helps an individual to listen and respond accordingly to a discussion. Writing assignments are devised to help formulate and express students’ reflections on the issue in an organized way as a precursor to academic

writing.

***GE 102 English II (4)**

Lecture: 60 hours

Prerequisite: GE 101

This course focuses on the conventions of academic writing, and the purpose of this course is to help students write convincing, well developed, and well-organized essays that synthesize, document, and respond to various sources on a given topic.

GE 111 Literature I (4)

Lecture: 60 hours

Prerequisite: None

This course is designed to engage students in careful reading and analysis of literary works from a range of genres including fiction, poetry, essay, and drama. Students will explore and discuss the themes, historical and cultural contexts, and specific strategies and techniques authors employ.

***GE 112 Literature II (4)**

Lecture: 60 hours

Prerequisite: GE 111

This course is designed to engage students in careful reading and analysis of literary works from a range of genres including fiction, poetry, essay, and drama. Students will explore and discuss the themes, historical and cultural contexts, and specific strategies and techniques authors employ. This course is a continuation of Literature I.

GE 120 Introduction to Philosophy (4)

Lecture: 60 hours

Prerequisite: None

This course introduces students to the major topics, problems, and methods of philosophy issued in the history of philosophy. Accordingly, this course is a study of the ideas/thoughts and techniques used by humans in their quest for reality through an analysis of the basic problems of metaphysics, epistemology, logic and ethics placed in historical perspective.

***GE 130 Introduction to Sociology (4)**

Lecture: 60 hours

Prerequisite: None

This course is an introduction to sociology as a way of understanding the world. Sociology is a field of study that explains social, political, and economic phenomena in terms of social structures, social forces, and group relations. We will examine the field by focusing on several important sociological topics, including socialization, culture, the social construction of knowledge, inequality, race and ethnic relations, poverty, and political sociology.

GE 140 Introduction to Psychology (4)**Lecture: 60 hours****Prerequisite: None**

This course is designed to introduce students to the study of psychology. It is intended to provide broad coverage of the field by presenting basic theories, research, and applied use of psychology. Areas that will be covered include: research methods, biology of mind, human development, sensation, perception, learning, memory, intelligence, motivation, emotions, personality, psychological disorders and their treatment, and social psychology. These areas will be approached from both theoretical and applied perspective.

GE 151 World History I (4)*Lecture: 60 hours****Prerequisite: None**

A survey of the evolution of civilization with an effort to show the interrelationship of all cultures from earliest times to the 15th century. It will investigate such areas of history as the cradles of civilization, the empires of Ancient Eurasia, Greece, Rome, China, India, Byzantium, Islam, Western Christendom, the Mongols, the Ottoman Empire, and the Renaissance. It will also attempt to assess the impact of these upon today's world.

GE 152 World History II (4)*Lecture: 60 hours****Recommended: GE 151.**

A survey of the evolution of civilization with an effort to show the interrelationship of all cultures in modern world from 1500 through the present. Students will study the origins and consequences of the Protestant Reformation, the Industrial Revolution, Political Reform throughout the World, Imperialism, the Great Depression, World Wars I & II, the Cold War, the Russian and Chinese Revolutions, Globalization, etc.

GE 160 Introduction to Physical Science (4)**Lecture: 60 hours****Prerequisite: None**

This course provides a study of basic physical sciences. It covers the nature science, measurement, solids, liquids, gases, classification of matter, atomic structure, periodic table, chemical bonds, chemical reactions, solutions, acids, Bases, motion, forces, energy, nuclear energy, machines, waves, sound, light, electricity, and magnetism.

GE 170 Introduction to Health Science (4)*Lecture: 60 hours****Prerequisite: None**

This is an Introduction to structures and functions of

the human body with special attention to the basic components of the body and their functions. The course will examine normal structure and function of the human Integumentary and Musculoskeletal Systems at the gross and intra structural levels. It includes a detailed analysis of muscle actions, innervations, and clinically relevant origins and insertions.

LT 201 Basic Biblical Hebrew (4)*Lecture: 60 hours****Prerequisite: None**

This course is an introduction to the basic principles of biblical Hebrew with emphasis on vocabulary, morphology, phonology and syntax.

LT 202 Basic Biblical Greek (4)*Lecture: 60 hours****Prerequisite: None**

This course introduces the Greek alphabet, vocabulary and grammar in a systematic way using relevant examples from the New Testament. The students will learn the basics of Greek grammar and basic Greek verb paradigms with the skills for reading and translating the Greek New Testament.

MN 410 Foundations of Christian Education (4)**Lecture: 60 hours****Recommended: BT 200**

This course is an introduction to the educational ministry of the church. Special attention will be given to five broad topics: the biblical, theological and philosophical foundations of education; emerging foundations of the teaching/learning process; responding to diverse needs of learners in the Church; the spirituality within a teaching ministry; and design of the Christian education ministries within the Church.

MN 420 Introduction to Worship and Liturgy (4)*Lecture: 60 hours****Prerequisite: BT 200**

This course introduces the principles of Christian worship and liturgy, the ritual experience of the Church's spirituality. It explores the ordering of worship, the role of prayer and music, models of collaborative worship planning with an overview of the history of Christian liturgy, its sources, development, and rituals and symbols.

MN 421 Introduction to Spirituality Training (1)*Practicum: 30 hours****Prerequisite: BT 200**

The purpose of this course is to provide students with rich spiritual experiences that promote intimacy with

God and Christ-likeness in character with the goal of fostering ongoing personal spirituality and the ability to facilitate spiritual renewal and consistent discipleship in others. Each student will attend one spirituality program offered either by the school or another institution/church. This is to be done in consultation with the student's advisor before and after the experience, and a written report must be submitted. Introduction to Spirituality Training course can be taken up to four times for credit.

***MN 430 Children's Ministry (4)**

Lecture: 60 hours

Prerequisite: MN 410

This course is designed to provide students with an overview of many facets in ministering to children in today's world. We will draw on the Bible, history, and psychology to lay good foundations for understanding children. Examining diverse contextual realities and issues, individual child's spiritual styles, learning theories, and teaching methods will help students to formulate their personal ministry philosophy for children's ministry and also to develop effective ways to minister to children in various settings.

***MN 440 Youth Ministry (4)**

Lecture: 60 hours

Prerequisite: MN 410

This course is designed to prepare individuals to minister effectively to youth primarily through the local church. This course gives a broad overview of contemporary culture, especially as it affects youth ministry, and provides foundational and biblical youth ministry concepts and philosophies. In addition, a broad spectrum of ministry programs and issues will be addressed, such as integration of ministry with parents as well as the inter-generational community of faith and organizing diverse ministry programs.

***MN 460 Principles of Homiletics (4)**

Lecture: 60 hours

Prerequisite: BT 200

This course is an introduction to theories and practices of preaching. Through this course, students will study the historical and theological background of Homiletics and learn how to prepare preaching in current context. Students will read, interpret, discuss, present, preach, write, and give and take feedbacks from colleagues and professor.

***MN 471 Evangelism Field Trip (2)**

Practicum: 60 hours

Prerequisite: BT 200

The purpose of this course is to provide students with evangelism experiences to equip them to share the

Gospel, use church and para-church structures in evangelism, use apologetics, and be aware of current issues in evangelism. Students will participate in one evangelism trip/outreach program offered either by the school or another institution/church. This is to be done in consultation with the student's advisor before and after the experience, and a written report must be submitted. Evangelism Field Trip course can be taken up to two times for credit.

***MN 480 Field Ministry (4)**

Practicum: 120 hours

Prerequisite: BT 200 and MN 410

This course is focused on the important principles of spiritual formation and ministry training within a ministry setting. Students must be approved by the relevant Faculty for choosing a church and mentor.

***MN 490 Christian Leadership (4)**

Lecture: 60 hours

Recommended: BT 200

This course will explore the nature of Christian leadership with particular focus on leadership styles, skills, and the dynamics of leadership. The course has two parts: one is for understanding Christian Leadership and the other is for developing the leadership.

***NT 200 Introduction to the New Testament (4)**

Lecture: 60 hours

Recommended: BT 200

This course touches basic, but indispensable subjects on the New Testament for its better understanding: How does the New Testament world look like in light of its culture, history, politics, religion, and society of the first century? Who wrote each book of the New Testament, where, why and under what circumstances? What are their main purposes to be written? etc.

NT 310 Introduction to Gospels (4)

Lecture: 60 hours

Prerequisite: BT 200

This course introduces students to the canonical Gospels of Matthew, Mark, Luke and John, with particular attention to the theological and literary purpose of each gospel, and to their historical value as sources for the life of Jesus of Nazareth. It will introduce the content, structure, and interrelationship of the four Gospels.

***NT 321 Acts (4)**

Lecture: 60 hours

Prerequisite: BT 200

This course is a general introduction of Acts with

major emphasis given to the Holy Spirit which was of importance to early churches. We look at overture from Peter and Paul and Pauline studies for church-mission. Attention is given to the first-century contexts (Judaism, Roman Empire, and early church) of the documents, the methodological issues of interpretation, and the use of these texts in the church today.

NT 330 Introduction to Pauline Epistles (4)**Lecture: 60 hours****Prerequisite: BT 200**

On an introductory level, this course studies the letters by Paul and considers their contemporary sociocultural backgrounds. In addition, it deals with how Paul's apostleship is expressed and demonstrated in these backgrounds in his attempt to solve the dynamic conflicts between the apostle and his addressees.

NT 340 Introduction to Common Epistles (4)**Lecture: 60 hours****Prerequisite: BT 200**

This course is an introduction to Hebrew, James, I, II, Peter, I, II, III, John, Jude. In addition to the traditional elements of "introduction," the methods of interpretation appropriate to some of the books will be discussed, and their theological content will be surveyed. The career of Peter, John, James, Jude as an evangelist and theologian will receive special attention.

NT 350 Introduction to Johannine Epistles (4)*Lecture: 60 hours****Prerequisite: BT 200**

This course is an introductory study of John's works which unfold the practical solution to the issue of 1) fellowship among the brothers and sisters, and 2) falsehood within a Christian community.

NT 351 Survey of Revelation (4)*Lecture: 60 hours****Prerequisite: BT 200**

This course is a study of the Book of Revelation with a focus on its literary genre, theological themes, and the various schools of interpretation. The course will also discuss the important questions regarding teaching and application of the book in our present-day.

OT 200 Introduction to the Old Testament (4)*Lecture: 60 hours****Recommended: BT 200**

This course is an introduction to the study of the Old Testament (Hebrew Bible/First Testament/Tanakh). It

will focus on the literature, history, and religious concepts of ancient Israel and Judah in attempt to understand the Bible in relation to its setting in the ancient Near Eastern world.

OT 310 Introduction to Pentateuch (4)**Lecture: 60 hours****Prerequisite: BT 200**

This course is designed to introduce the first five books (Genesis to Deuteronomy) of the Old Testament. The course will explore the historical, literary, and theological interpretation of the Pentateuch.

OT 320 Introduction to Historical Books (4)**Lecture: 60 hours****Prerequisite: BT 200**

This course focuses on 12 Historical Books (Joshua – Esther) and its interpretation in the context of the Church. This means attention is given to the content of the Historical Books, its historical-cultural context, questions of interpretive method, and questions of contemporary application.

OT 330 Wisdom Literature (4)**Lecture: 60 hours****Prerequisite: BT 200**

This course is designed to introduce the student to historical, literary, and theological aspects of Wisdom Literature in the Old Testament. Students will explore Ancient Near East (ANE) wisdom in general, and the books of Proverbs, Job, Ecclesiastes, and Song of Songs.

OT 340 Introduction to Major Prophets (4)**Lecture: 60 hours****Prerequisite: BT 200**

This survey course studies the Hebrew prophetic literature, focusing on the books of Isaiah, Jeremiah, Ezekiel and Daniel. It examines the historical, theological, literary, and canonical perspectives of selected texts as well as the prophetic traditions that inform and shape the Hebrew Prophets.

OT 350 Introduction to Minor Prophets (4)**Lecture: 60 hours****Prerequisite: BT 200**

This course studies the Hebrew prophetic literature, focusing on twelve minor prophets (Hosea-Malachi). It examines the historical, theological, literary, and canonical perspectives of selected texts as well as the prophetic traditions that inform and shape the Hebrew Prophets.

OT 360 Introduction to Holy Writing (4)**Lecture: 60 hours****Prerequisite: BT 200**

This course is designed to introduce the student to historical, literary, and theological aspects of Writings in the Old Testament. Students will be introduced to Ancient Near East (ANE) wisdom and poetic literatures in general, and to the books of Poetics (Job, Psalms, Proverbs), Five Festival Scrolls (Song of Solomon, Ruth, Lamentations, Ecclesiastes, Esther), and Historical Books (Daniel, Ezra, Nehemiah, Chronicles I, II).

OT 370 Introduction to the Prophets (4)**Lecture: 60 hours****Prerequisite: BT 200**

This survey course studies the Hebrew prophetic literature, focusing on four Major Prophets (Isaiah, Jeremiah, Ezekiel, and Daniel) and twelve Minor Prophets (Hosea-Malachi). It examines the historical, theological, literary, and canonical perspectives of selected texts as well as the prophetic traditions that inform and shape the Hebrew Prophets.

TH 200 Foundations of Christian Theology (4)**Lecture: 60 hours****Recommended: BT 200**

This course introduces the student to Christian theology. It begins with a study of the nature and necessity of studying theology with primary attention given to the authority of God's self-disclosure in Scripture. It will establish a foundation of concepts and terminology on which to build a theological framework. Subject matter includes: the doctrine of God, humanity, Christ, the Holy Spirit, and the church. Key concepts, issues, and the practical implications and integration of these doctrines in Church and Christian life are discussed.

TH 350 Church History Survey (4)**Lecture: 60 hours****Recommended: BT 200**

This course explores the development of the Christian church from Pentecost through the 20th century. It covers key people and events that God used throughout history to develop His church, and it also explores the negative influences that infected her. The goal of the course is to use lessons from church history to advance the kingdom of God in life and ministry.

TH 380 Christian Ethics (4)**Lecture: 60 hours****Recommended: BT 200**

This course is an introductory study in Christian ethics which focuses on ethical methodology and application of Christian ethical principles to key issues in Christian church and society.

TH 400 Gospel & Culture (4)*Lecture: 60 hours****Prerequisite: BT 200**

This course discusses the main features of the postmodern culture, the meaning of faithfulness to the gospel, the good news of God's salvation, and the nature and mission of the Church. It is to prepare missional leaders for serious examination of the ideologies and cultural milieu of postmodernism.

TH 452 History of Christian Thought (4)*Lecture: 60 hours****Recommended: BT 200**

This course surveys some of the central events, ideas, and figures in the history of Christianity from the early church to the present. The course will also discuss the significance of historical developments of Christian thoughts for the church today as well as selected contemporary issues.

TH 460 Introduction to Comparative Religions (4)*Lecture: 60 hours****Recommended: BT 200**

This course is a comparative study of religion and religious traditions. Student will learn fundamentals of several religious traditions and also various approaches scholars use to understand religion.

TH 470 Introduction to Hermeneutics (4)*Lecture: 60 hours****Prerequisite: BT 200**

This course provides an introduction to the process of investigating the meaning and significance of biblical texts. The goal of this course is to give the student not only an understanding of the principles of proper biblical interpretation but also the ability to apply those principles in sermon preparation, personal Bible study, and/or in writing.

MASTER OF DIVINITY (M.Div.)

The Master of Divinity (M.Div.) is a professional graduate degree program with a traditional seminary curriculum including Exegetical, Historical, Systematic, and Practical Theology. It is designed to meet the needs of pastors or other full-time Christian workers, especially those who wish to enhance their knowledge and effectiveness to study, understand, and proclaim the Word of God, and eventually to serve in the church and the world. Upon the completion of this program, graduates are prepared for ministry in a variety of vocational settings including churches, parachurch organizations, social services, hospitals, military chaplaincy, and hospices.

Program Objectives

1. To equip students based on the principle of Sola Scriptura to serve the church and impact the world for Christ.
2. To prepare students for effective professional ministry as servant-leaders with the assurance of eternal salvation.
3. To train students to accurately interpret and apply Scripture based on sound exegetical methodology.
4. To encourage students to demonstrate both spiritual and personal maturity through an increasing awareness of the presence of Christ and growing conformity to the character of Christ.
5. To prepare students for advanced education in doctoral studies, including Ph.D., D. Min., or D. Miss. programs.

Program Learning Outcomes

1. Apply the principle of Sola Scriptura in the historical context to Biblical interpretation.
2. Develop an assurance of eternal salvation through Christ and apply this assurance in their ministry and service.
3. Demonstrate professional skills as servant leaders for effective practice and ministry within their selected field.
4. Prepare sermons based on an accurate knowledge and exegesis of Scripture, expressing the compassion of Christ.
5. Demonstrate spiritual and personal maturity through an increasing awareness of the presence of Christ and growing conformity to the character of Christ.
6. Conduct academic research and critical thinking

skills necessary for post-graduate education.

Students who successfully complete this program should be prepared to serve as:

| Standard Occupational Classification Codes | |
|---|---|
| 21-2011 | Clergy |
| 21-2022 | Directors, Religious Activities/Education |
| 21-2099 | Religious Workers, All Other |

Program Requirements

The program requires 96 semester units of coursework to be completed with a minimum GPA of 2.0 and the passage of the Comprehensive Bible Exam after completing all coursework. Degree must be completed within 7 years.

Exegetical Theology (40 semester units)

| | |
|-------------------------|---|
| BT 500 Bible Survey | 4 |
| OT 510 Pentateuch | 4 |
| OT 560 Holy Writings | 4 |
| OT 570 Prophets | 4 |
| NT 510 Gospels | 4 |
| NT 530 General Epistles | 4 |
| NT 540 Pauline Epistles | 4 |
| LT 541 Biblical Hebrew | 4 |
| LT 542 Biblical Greek | 4 |
| TH 540 Hermeneutics | 4 |

Systematic Theology (8 semester units)

| | |
|-------------------------------|---|
| TH 531 Systematic Theology I | 4 |
| TH 532 Systematic Theology II | 4 |

Historical Theology (8 semester units)

| | |
|--------------------------|---|
| HT 551 Church History I | 4 |
| HT 552 Church History II | 4 |

Practical Theology (16 semester units)

| | |
|-----------------------------|---|
| PT 510 Pastoral Theology | 4 |
| PT 520 Homiletics | 4 |
| PT 540 Educational Ministry | 4 |
| PT 570 Church Internship | 4 |

Electives (24 semester units)

| | |
|-----------------------------------|---|
| OT 500 Old Testament Survey | 4 |
| OT 520 Poetic & Wisdom Literature | 4 |
| OT 530 Historical Books | 4 |
| OT 540 Major Prophets | 4 |
| OT 550 Minor Prophets | 4 |
| NT 500 New Testament Survey | 4 |
| NT 521 Acts & Work of Holy Spirit | 4 |
| NT 550 Johannine Works | 4 |
| NT 551 Revelations | 4 |

| | |
|---|---|
| TH 535 Reformation Theology | 4 |
| TH 560 Comparative Religions | 4 |
| PT 511 Pastoral Counseling | 4 |
| PT 521 Expository Preaching | 4 |
| PT 530 Worship & Liturgy | 4 |
| PT 531 Spirituality Training | 1 |
| PT 550 Anthropological Perspective of Mission | 4 |
| PT 571 Mission Field Trip | 2 |
| PT 580 Pastoral Ethics | 4 |
| PT 590 Leadership Development | 4 |
| PT 680 Advanced Research & Writing | 4 |

Course Descriptions

(each course is offered once every two years)

BT 500 Bible Survey (4)

Lecture: 60 hours

Prerequisite: None

This course is an introduction to the historical, literary, and theological aspects of the Bible. We will survey the central characters and events of biblical history, examine the variety of genres found in the Bible, and discuss key theological themes emphasized within the Bible. Students will be introduced to methods of biblical criticism and interpretation that integrate skills developed in other disciplines.

HT 551 Church History I (4)

Lecture: 60 hours

Recommended: BT 500

This course covers the Church history from the apostolic period to the Reformation. Emphasis is placed upon the central historical figures, movements, and theological issues, with attention given to their importance for Christian ministry today.

HT 552 Church History II (4)

Lecture: 60 hours

Recommended: BT 500 and HT 551

This course covers the Church history from the Reformation to the modern period. Emphasis is placed upon the central historical figures, movements, and theological issues, with attention given to their importance for Christian ministry today.

LT 541 Biblical Hebrew (4)

Lecture: 60 hours

Prerequisite: None

The course will engage in detailed exegesis of portions of the Hebrew text. In addition to the historical and critical issues, this course will pay special attention to the contemporary trends in the study of the Hebrew text as well as its unique characteristics, theology, and life-setting. The course intends to build upon exegetical methods and solidify

exegesis of the Hebrew text through intensive practice.

LT 542 Biblical Greek (4)

Lecture: 60 hours

Prerequisite: None

This course introduces Biblical Greek in the New Testament. The student will learn the essentials of grammar and basic vocabulary and be equipped to translate, interpret, and use Greek in their biblical studies. The student will solidify his or her understanding of the basic morphology, grammar, vocabulary, and syntax of the Greek New Testament.

***NT 500 New Testament Survey (4)**

Lecture: 60 hours

Recommended: BT 500

This course introduces students to the writings of the NT so that they can read, interpret, and apply the NT responsibly and enthusiastically. The students will also study the background and literature of the New Testament with historical and cultural factors of the inter biblical period and of pertinent political and geographical factors.

NT 510 Gospels (4)

Lecture: 60 hours

Prerequisite: BT 500

This course is an overview of the Gospels (Matthew, Mark, Luke and John) which give the accounts of the life and ministry of Jesus. The course will emphasize the Christological uniqueness of each gospel's portrait of Christ's history, ministry, person and work as well as application of certain basic truths taught and demonstrated by Jesus Christ to our lives. The course will also consider what can really be known about Jesus of Nazareth, in contrast to later legends and beliefs.

***NT 521 Acts & Work of Holy Spirit (4)**

Lecture: 60 hours

Prerequisite: BT 500

This course is an in-depth study of Acts with major emphasis given to the Holy Spirit which was of importance to early churches. We examine how the Holy Spirit work through Peter and Paul for church missions. Attention is given to the first-century contexts (Judaism, Roman Emperor, and early church) of the documents, the methodological issues of interpretation, and the use of these texts in the church today.

NT 530 General Epistles (4)**Lecture: 60 hours****Prerequisite: BT 500**

This course includes a survey and study of the non-Pauline epistles Hebrews, James I & II, Peter I, II & III, John, and Jude. The major themes of each book will be considered with a discussion of structural features, historical setting, and theological emphasis, presenting the major themes and basic content and value of each individual book and their contribution to the whole Bible.

NT 540 Pauline Epistles (4)**Lecture: 60 hours****Prerequisite: BT 500**

The course covers the ministry and teachings of the Apostle Paul as recorded in the Pauline Epistles. Special attention is given to Paul's theology as well as the pastoral needs of churches in both in Paul's day and ours. In addition, attention is given to thinking, valuing, and living biblically by learning how to apply Scripture to life and ministry.

NT 550 Johannine Works (4)*Lecture: 60 hours****Prerequisite: BT 500**

This is a thematic approach to the study of John's Gospel and three epistles. Special consideration will be given to the historical and cultural context of these writings. Key passages will be analyzed and interpreted for their theological content.

NT 551 Revelation (4)*Lecture: 60 hours****Prerequisite: BT 500**

This course is designed to guide the student in a study of the unique book of the canon, namely, Revelation. Special emphasis will be placed on the genre issue, the different hermeneutical approaches to the book, crucial interpretive issues, the book's literary structure and artistry, and its distinctively high Christology. The important question of teaching and applying the book in our present-day, apocalyptically fearful/sensitive setting will also be touched.

OT 500 Old Testament Survey (4)*Lecture: 60 hours****Recommended: BT 500**

This course is designed to introduce the literature, history, and messages of the Old Testament. The Old Testament provides its readers with a history of the people of Israel and a picture of Israel's relationship with God. Yet, the Old Testament is far more than the story of ancient Israel. The material revealed in its pages' functions as the theological and moral

foundation for three of the world's major religious traditions: Judaism, Christianity, and Islam. As such, it has shaped the history of western civilization and continues to influence the world today. Thus, as we study the ancient text we will also consider its impact on ourselves and on people of other cultures today.

OT 510 Pentateuch (4)**Lecture: 60 hours****Prerequisite: BT 500**

The course is concerned with the text and interpretation of the Pentateuch, Israel's foundational literature and the origin of her consciousness as the people of God. Matters of background (historical and cultural), content, structure and literary form (narrative and legal) will be covered, especially as they show the development of theological themes. Issues of critical methodology and interpretation will be addressed as they illumine our understanding of the text.

OT 520 Poetic & Wisdom Literature (4)*Lecture: 60 hours****Prerequisite: BT 500**

This course is an overview survey of the wisdom books of the Old Testament, focusing primarily on the poetry of Job, Psalms, Proverbs, Ecclesiastes and Song of Solomon. The course content includes introductions to the various books, characteristics of Hebrew poetry, exegesis of selected passages and a broad overview of major theological themes in Old Testament wisdom literature. Students will learn the material through the course teaching, readings, discussion and assignments.

OT 530 Historical Books (4)*Lecture: 60 hours****Prerequisite: BT 500**

This course consists of an in-depth exploration of the 12 Historical Books (Joshua-Esther) and their interpretation in the context of the Church in mission. Among the themes, students explore the meaning of "image of God", blessing and abundance, stewardship of cultural and redemptive mandates, covenant community and social ethics, justice and grace.

OT 540 Major Prophets (4)*Lecture: 60 hours****Prerequisite: BT 500**

This course is a study of the structure and content of the Major Prophets (Isaiah, Jeremiah, Lamentations, Ezekiel, and Daniel), with emphasis on the prophetic themes of each book. The student will learn how to take the prophetic utterance of the Major Prophets

and interpret them according to normal rules of hermeneutics. The student will also be able to understand God's working through history and his chosen servant, "The Messiah" to manifest and revealing his visions of hope and salvation for his chosen people, Israel and ultimately the Church.

***OT 550 Minor Prophets (4)**

Lecture: 60 hours

Prerequisite: BT 500

This course is a study of the last 12 books of the Old Testament known as the Minor Prophets (Hosea, Joel, Amos, Obadiah, Jonah, Micah, Nahum, Habakkuk, Zephaniah, Haggai, Zechariah, and Malachi). The course will focus on the historical, political, religious, and social events that shaped the ministry of the Minor Prophets and provided the impetus for their preaching. Students will learn how the prophetic message explains the mission of God in the world.

OT 560 Holy Writings (4)

Lecture: 60 hours

Prerequisite: BT 500

This course is a survey of the Old Testament in its historical, canonical, geographical, and cultural contexts, focusing on 12 Historical Books (Joshua-Esther) and Wisdom Literature. Attention is given to distinctive features, main events and outstanding personalities, as well as literary structure, genre, and important theological themes in the history of ancient Israel. This study gives a comprehensive and panoramic view of Israel's progressive understanding of her election and covenantal relationship with God.

OT 570 Prophet (4)

Lecture: 60 hours

Prerequisite: BT 500

This course studies the Hebrew prophetic literature, focusing on major (Isaiah, Jeremiah, Ezekiel) and minor prophets (Hosea-Malachi). It examines the historical, theological, literary, and canonical perspectives of selected texts as well as the prophetic traditions that inform and shape the Hebrew Prophets. With this background, the class will study contemporary use of biblical prophecy in modern literature dealing with apocalyptic and eschatological issues.

PT 510 Pastoral Theology (4)

Lecture: 60 hours

Prerequisite: BT 500

This course explores the theological and practical dimensions of ministry so that men and women with a pastoral calling might know how to conduct themselves for caring the flock of God (1 Timothy

3:14-15, 1 Peter 5:2-4). Attention is given to the nature of a call to pastoral ministry or a staff position in church ministries, church leadership as a pastor, and the major areas of pastoral care (Holy Baptism, Confession and Absolution, Holy Communion, Christian Fellowship, Confirmation, Admonition, Marriage, Burial, Counseling, and Administration).

***PT 511 Pastoral Counseling (4)**

Lecture: 60 hours

Prerequisite: BT 500

This course is designed to study the special issues associated with the theory, practice, and administration of counseling in pastoral contexts. The student will learn general counseling principles applicable for the local church, practice basic counseling skills, examine models and methodology for counseling, and acquire expertise in specific problem areas commonly experienced by pastoral counselors.

PT 520 Homiletics (4)

Lecture: 60 hours

Prerequisite: BT 500

Recommended: TH 531 and TH 532

This course is a study in the preparation of preaching. Attention is given to various types of preaching, methods of interpretation, spiritual formation of the preacher, picture preaching, sermon preparation resources, formula of sermon outlines, techniques of public communication, and creation and presentation of a sermon. Practicum included.

***PT 521 Expository Preaching (4)**

Lecture: 60 hours

Prerequisite: PT 520

This course is designed to enhance the development of the student's expository ability through exercises in the critical explanation of scripture.

***PT 530 Worship & Liturgy (4)**

Lecture: 60 hours

Prerequisite: BT 500

This course will deal with the foundational importance of worship in the church. The course will focus on the principles of Christian liturgy, the ritual experience of the Church's spirituality. It will consider present day experience and need for development in pastoral liturgical application. Key elements in the practice and leadership of worship will be explored including the ordering of worship, the role of prayer and music, and models of collaborative worship planning.

PT 531 Spirituality Training (1)*Practicum: 30 hours****Prerequisite: None**

The purpose of this course is to provide students with rich spiritual experiences that promote intimacy with God and Christ-likeness in character with the goal of fostering ongoing personal spirituality and the ability to facilitate spiritual renewal and consistent discipleship in others. Each student will attend one spirituality program offered either by the school or another institution/church. This is to be done in consultation with the student's advisor before and after the experience, and a written report must be submitted. Spirituality Training course can be taken up to ten times for credit. May repeat for credit.

PT 540 Educational Ministry (4)**Lecture: 60 hours****Prerequisite: None**

This course is designed to provide an overview of the Christian education function in the local church. The emphasis of this course is to give pastors, ministers of education and other Christian educators a general background of the history, philosophy, scope, and need for quality Christian education in the local churches of today.

PT 550 Anthropological Perspective of Mission (4)*Lecture: 60 hours****Prerequisite: BT 500**

This course presents anthropological models of cross-cultural ministry, addressing theoretical and practical concerns. Topics include: Christianity and culture, cross-cultural interpretation of the Bible and the Gospel, contextualization of theology, and the missionary role, gifts and calling, support networks, ministry goals, leadership skills, second language acquisition, and models of interpersonal, ethical and spiritual reconciliation.

PT 570 Church Internship (4)**Practicum: 120 hours****Prerequisite: BT 500 and PT 540**

This course is focused on the important principles of spiritual formation, spiritual leadership, and ministry training within a ministry setting. A student should enter into a church Internship with an approved church and mentor by the relevant Faculty in order to earn credit for the intern experience requirement of the M. Div. degree.

PT 571 Mission Field Trip (2)*Practicum: 60 hours****Prerequisite: BT 500**

The purpose of this course is to provide students with

mission experiences and to introduce the biblical, theological, historical, and practical bases for Christian mission. Special attention is given to contemporary issues in missions as well as current ways to do missions. Students will participate in one mission/outreach program offered either by the school or another institution/church. This is to be done in consultation with the student's advisor before and after the experience. Mission Field Trip course can be taken up to two times for credit.

PT 580 Pastoral Ethics (4)*Lecture: 60 hours****Prerequisite: BT 500**

This course explores the terminology, major views, and problems in the study of ethics and to a biblical basis for morality. The ethical and legal concerns surrounding church discipline, leadership conflicts, and church divisions will also be presented with an emphasis on methods of conflict resolution.

PT 590 Leadership Development (4)*Lecture: 60 hours****Recommended: BT 500**

This course explores the biblical principles and practices of developing leaders within the Christian community, including discussion of theological truth, spiritual character and practical skills. Student will gain insight into his/her leadership potential, gifts, values, preferences, style, and skill levels.

PT 680 Advanced Research & Writing (4)*Lecture: 60 hours****Prerequisite: TH 531 and TH 532**

This course will provide the M.Div. student with research skills and methods needed to define a project topic and to complete the project.

TH 531 Systematic Theology I (4)**Lecture: 60 hours****Prerequisite: BT 500**

This course is designed to give a concise introduction to the nature, history, and methodology of systematic theology. It will cover revelation, both general and special, inspiration, canonicity, authority and illumination of the Word of God as well as the doctrine of God, including His existence, attributes, and Trinitarian nature.

TH 532 Systematic Theology II (4)**Lecture: 60 hours****Prerequisite: BT 500****Recommended: TH 531**

This course will provide introductory discussions to sin, the Person and Work of Christ, salvation and the

Christian life, Christian eschatology, and the meaning and functions of the church. We will define the scriptural views while refuting other views. The goal of the course is to make relevance of theology to our lives in Christ and to our ministries within the Church and in the wider world.

***TH 535 Reformation Theology (4)**

Lecture: 60 hours

Prerequisite: HT 551 and HT 552

This course is designed to give an understanding and an appreciation for Reformation Theology. The class will focus on major issues and leading figures such as Luther, Melancthon, Zwingli, and Calvin. Special attention will be given to the doctrinal beliefs which drove the Reformation.

TH 540 Hermeneutics (4)

Lecture: 60 hours

Prerequisite: BT 500

Recommended: LT 541 and LT 542

This course is designed to familiarize the student with biblical interpretation. The general, historical, literary, and contextual principles of interpreting texts will be investigated through readings, lectures, discussions, assignments, and a research project. Topics will include essential steps in interpreting the Bible, various methods and approaches, historical and theological issues arisen out of the interpretive task, the relationship between the testaments, and word studies and literary genre.

***TH 560 Comparative Religions (4)**

Lecture: 60 hours

Prerequisite: BT 500

This course examines most of the major religious traditions of the world in terms of their history, worldviews, practices, goals and ideals. These include the religions of the Middle East (Judaism, Christianity, and Islam) and Europe (Protestant Christianity), and the religions of South Asia (Hinduism, Jainism, Buddhism) and East Asia (Confucianism). These religions are compared on several aspects: finding common ground, areas of tensions, and area of most difficulty. In addition, the class will contextualize world religions within the larger contours of human history and relevant issues from comparative religious studies.

MASTER OF RELIGIOUS EDUCATION (M.R.E.)

The Master of Religious Education (M.R.E.) is a professional graduate professional graduate degree program that provides a broad and in-depth exploration of the field of religions. It is designed to equip professional religious workers and lay volunteers for competent leadership in various forms of educational ministry in congregations and other religious institutions.

Program Objectives

1. To develop students' capacity for critical and constructive theological reflection regarding the content and processes of educational ministry.
2. To increase their understanding of the educational, social, and behavioral sciences that undergird educational practice, as well as the cultural contexts in which educational ministry occurs.
3. To assist their growth in personal and spiritual maturity.
4. To build the intellectual, affective, and professional capacities required for educational ministry, and skills in teaching and in the design, administration, and assessment of educational programming.

Program Learning Outcomes

1. Critically reflect on the biblical, philosophical, and theological aspects of educational ministries within churches and other religious organizations.
2. Make use of insights of educational, social and behavioral sciences that ground educational practice within the various cultural contexts in which educational ministry occurs.
3. Identify and interpret the process of holistic spiritual development for leadership, teaching, and interpersonal relationships.
4. Integrate this knowledge into a personal response of faithful love for Jesus Christ, which is expressed in their loving service to his Church and all people.
5. Demonstrate skills in teaching and in the design, administration, and assessment of educational programming.

Students who successfully complete this program should be prepared to serve as:

| Standard Occupational Classification Codes | |
|--|---|
| 21-2011 | Clergy |
| 21-2022 | Directors, Religious Activities/Education |
| 21-2099 | Religious Workers, All Other |

Program Requirements

The program requires 48 semester units of coursework to be completed with a minimum GPA of 2.0. Degree must be completed within 7 years.

Bible/Theology (16 semester units)

| | |
|---------------------------------------|---|
| BT 510 Bible Study | 4 |
| HT 555 History of Christian Education | 4 |
| PT 535 Worship & Education | 4 |
| TH 533 Christian Doctrine | 4 |

Education (20 semester units)

| | |
|-------------------------------------|---|
| ET 500 Religious Education | 4 |
| ET 555 Curriculum Theory & Design | 4 |
| ET 565 Ministry Across the Lifespan | 4 |
| ET 580 Multicultural Education | 4 |
| ET 599 M.R.E. Capstone Seminar | 4 |

Electives (12 semester units)

| | |
|---|---|
| ET 542 Educational Ministry for Children & Youth | 4 |
| ET 545 Family Ministry | 4 |
| ET 575 Spiritual Leadership & Team Building | 4 |
| ET 582 Psychological & Sociological Foundations for Education | 4 |
| ET 589 Bible Study Methods & Hermeneutics | 4 |
| ET 590 Field Education | 4 |
| ET 595 M.R.E. Thesis | 4 |
| PT 511 Pastoral Counseling | 4 |
| PT 583 Spiritual Formation & Discipleship | 4 |

Course Descriptions

(each course is offered once every two years)

BT 510 Bible Study (4)

Lecture: 60 hours

Prerequisite: None

This course is an introduction how to become a better Bible teacher. Student will study Bible with the central characters and events of biblical history, examine the variety of genres found in the Bible. Student will also survey how to study the Bible more effectively with lexical studies, grammatical studies, and contextual analysis, how to use line diagramming and block diagramming to recognize and establish outlines for teaching texts, and how to create teaching outlines that have order and purpose.

ET 500 Religious Education (4)

Lecture: 60 hours

Prerequisite: None

This course is designed to provide an overview of the Christian education function in the local church. The emphasis of this course is to give pastors, ministers of education and other Christian educators a general background of the history, philosophy, scope, and need for quality Christian education in the local churches of today.

***ET 542 Educational Ministry for Children & Youth (4)**

Lecture: 60 hours

Prerequisite: ET 500

This course is designed to prepare individuals to minister effectively to children and youth primarily through the local church. This course gives a broad overview of contemporary culture, especially as it affects children and youth ministry, and provides foundational and biblical ministry concepts and philosophies. In addition, a broad spectrum of ministry programs and issues will be addressed, such as integration of ministry with parents as well as the inter-generational community of faith and organizing diverse ministry programs.

***ET 545 Family Ministry (4)**

Lecture: 60 hours

Prerequisite: ET 500

This course is an introduction to the family ministry, investigating contemporary family life including major issues and concerns. It will focus on the biblical principles for family and the role of family ministry in the church in addressing these needs. Family ministry projects for particular issues will be developed and evaluated.

ET 555 Curriculum Theory & Design (4)

Lecture: 60 hours

Prerequisite: ET 500

This course prepares students for success in the context of educational ministry through purposeful educational strategies and curriculum design. Topics explored are the foundations, design, development, implementation, and evaluation components of curriculum. Traditional forms of church life will be examined as the context and the curriculum of faith formation.

ET 565 Ministry Across the Lifespan (4)

Lecture: 60 hours

Prerequisite: ET 500

This course is an overview of developmental psychology and a comparison of theories of human

growth and development. This course includes pre-natal development through older adult and death. Physical, cognitive, social, and spiritual development of children and adults are presented. Attention is given to consideration of the impact of developmental theory on ministry.

***ET 575 Spiritual Leadership & Team Building (4)**

Lecture: 60 hours

Prerequisite: BT 500 and ET 500

This course is an introduction to the distinctive principles of spiritual leadership. It will focus on the biblical principles and practices of developing leaders within the Christian community, including spiritual character and practical skills. Student will gain insight into his/her potential, gifts, vision, goal, and plans for leadership in ministry.

ET 580 Multicultural Education (4)

Lecture: 60 hours

Prerequisite: ET 500

The purpose of this course is to provide students with a knowledge base and strategies for understanding education in a culturally pluralistic society. Students will engage in learning activities that expose them to issues related to teaching and working with diverse student populations and reflect on the interactions of culture, teaching, and learning. They will address issues that are prevalent in teaching in culturally, ethnically, socially, and linguistically diverse classrooms and ministry settings. Students will also be challenged to explore how the conceptions of educational diversity and equity can fit into their own teaching practices.

***ET 582 Psychological & Sociological Foundations for Education (4)**

Lecture: 60 hours

Prerequisite: ET 500

This course focuses on the basic theories of learning and teaching and the application of theory to educational environments. Students will learn about cognitive and affective theories related to learning as well as develop understandings of the social, cultural, and political factors that influence teaching and learning. Units of study include such topics as the principles of motivation, classroom management, learning theories, contemporary teaching strategies, and contemporary issues in education.

***ET 589 Bible Study Methods & Hermeneutics (4)**

Lecture: 60 hours

Prerequisite: BT 500 and ET 500

This course covers the Church history from the apostolic period to the Reformation. Emphasis is

placed upon the central historical figures, movements, and theological issues, with attention given to their importance for Christian ministry today.

***ET 590 Field Education (4)**

Lecture: 60 hours

Prerequisite: BT 500 and ET 500

This course provides students the opportunity to apply knowledge and skills from religious education coursework to an educational ministry setting. It will enhance students' professional competencies as religious educators as they participate in field education at a religious educational site and also in reflection group with other students for the purpose of reflecting on their experiences, personal awareness, and spiritual formation. A student should enter into the Field Education with an approved church and site supervisor by the relevant Faculty in order to earn credit for the Field Education requirement of the M.R.E. degree.

***ET 595 M.R.E. Thesis (4)**

Lecture: 60 hours

Prerequisite: BT 500, ET 500, ET 555, ET 565, and ET 580

This course will develop students' abilities to do independent research using the concepts and tools of religious education. Students will undertake a research project and produce a thesis based on a topic of interest. Particular attention will be given to the different models of reasoning in research, the crafting and assessment of arguments, elements of form and style, and final editing. Only students within sixteen hours of graduation may take this course.

ET 599 M.R.E. Capstone Seminar (4)

Lecture: 60 hours

Prerequisite: BT 500, ET 500, ET 555, ET 565, and ET 580

This capstone course is the cumulative project course designed for graduating students in the Master of Religious Education degree program. The seminar will guide the student to integrate the knowledge and skills learned in his/her course of study through the development and presentation of a religious education practice. The course should only be taken after the successful conclusion of all courses in the core of the MRE degree, preferably during the last term of attendance.

HT 555 History of Christian Education (4)

Lecture: 60 hours

Prerequisite: None

This course is a survey of the history of Christian Education from Old Testament times to the present

and a study of theories of Christian Education. Emphasis is placed on developing a biblical philosophy of Christian Education with attention given to their importance for Christian ministry today.

***PT 511 Pastoral Counseling (4)**

Lecture: 60 hours

Prerequisite: BT 500

This course is designed to study the special issues associated with the theory, practice, and administration of counseling in pastoral contexts. The student will learn general counseling principles applicable for the local church, practice basic counseling skills, examine models and methodology for counseling, and acquire expertise in specific problem areas commonly experienced by pastoral counselors.

PT 535 Worship & Education (4)

Lecture: 60 hours

Prerequisite: BT 500

This course will deal with the foundation of worship and the sacraments that informs the education for and the practice of each in the congregational setting. The course will focus on the principles of Christian liturgy and the ritual experience of the Church's spirituality in Christian education. Key elements in the class will be explored including the centrality of worship in the life of the congregation, planning for the inclusion of all God's children in worship and the sacraments, the unity of Word and Table, worship design, flow, leadership and space, preparation for baptism and communion, a life-span approach to worship education.

***PT 583 Spiritual Formation & Discipleship (4)**

Lecture: 60 hours

Prerequisite: BT 500

The purpose of this course is to provide quality theological education for students in the area of discipleship and spiritual formation for both personal and congregational life. The student is introduced to the historic disciplines and practices of the Christian faith that promote intimacy with God and Christ-likeness in character with the goal of fostering ongoing personal vitality essential to ministry and the ability to facilitate spiritual renewal and consistent discipleship in others.

TH 533 Christian Doctrine (4)

Lecture: 60 hours

Prerequisite: BT 500

This course is designed to give a general survey of Bible doctrine designed to introduce the student to the major areas of systematic theology. This course

presents the following areas of doctrine: Doctrine of Trinity, Anthropology, Christology, Pneumatology, Ecclesiology, Soteriology, Eschatology.

DOCTOR OF MINISTRY (D.MIN.)

This program is designed to further refine the professional ministers' skills using the basic biblical and theological foundations acquired during their first professional training program and using their insights acquired during their professional ministry and then helping the minister define a cohesive area of research and study for effective ministry. The D. Min. program is 42 semester units and requires two years ministry experience after completion of the M.Div. or equivalent degree prior to enrolling. At the conclusion of this program the student will be required to write a dissertation.

Program Objectives

1. To increase students' capacities for theological reflection on the practice of leadership in communities of faith and in society;
2. To resource students with advanced research skills that foster critical thinking and the ability to make informed decisions impacting their ministries;
3. To enhance ministerial skills such as preaching, leadership, administration, spiritual formation, educational programming, and communication;
4. To assist positive growth in both the Christian leader's personal life and public ministry.

Program Learning Outcomes

1. Articulate a comprehensive understanding of Biblical and Theological principles for professional ministry.
2. Develop a clear understanding of their professional strengths.
3. Demonstrate an ability to critically analyze ministry issues.
4. Provide a solution to a professional ministry problem within his/her own personal area of ministry.
5. Articulate a specific plan for ministry effectiveness.

Students who successfully complete this program should be prepared to serve as:

| Standard Occupational Classification Codes | |
|--|---|
| 21-2011 | Clergy |
| 21-2022 | Directors, Religious Activities/Education |
| 21-2099 | Religious Workers, All Other |

Program Requirements

The program requires 42 semester units of coursework to be completed with a minimum GPA of 3.0 including the completion of a dissertation. Degree must be completed within 7 years.

Ministry/Theology (30 semester units)

| | |
|--|---|
| DT 760 Methods of Research Seminar | 4 |
| DT 771 Legal Issues in Pastoral Ministry | 6 |
| DT 780 Doctoral Dissertation | 8 |
| PT 740 Pastoral Theology Seminar | 6 |
| ST 730 Spirituality Seminar | 6 |

Electives (12 semester units)

| | |
|--|---|
| *DT 772 Selected Topics in O.T. Exegesis | 6 |
| *DT 773 Selected Topics in N.T. Exegesis | 6 |
| *NT 720 New Testament Seminar | 6 |
| *OT 710 Old Testament Seminar | 6 |
| *PT 750 Christian Leadership Seminar | 6 |

Course Descriptions

(each course is offered once every two years)

DT 760 Methods of Research Seminar (4)

Lecture: 60 hours

Prerequisite: Completion of 12 Doctoral-Units

This course will examine methods of conducting research applicable to D.Min. projects. The student will develop a foundational topic for D.Min. research and will then develop a plan for research that will eventually lead to the writing of their D.Min. dissertation/project.

DT 771 Legal Issues in Pastoral Ministry (6)

Lecture: 90 hours

Prerequisite: None

This elective course will focus on current legal issues related to pastoral and non-profit religious institutions. The course will then require the student to analyze a selected institution’s legal liabilities and to make recommendations for the development of a legal protection management plan.

***DT 772 Selected Topics in O.T. Exegesis (6)**

Lecture: 90 hours

Prerequisite: None

This course will present special topics on Old

Testament Exegesis and relate them to the practice of preaching and teaching for pastors. The course will feature guest lecturers and will require the student to produce a major integration paper on the topic.

***DT 773 Selected Topics in N.T. Exegesis (6)**

Lecture: 90 hours

Prerequisite: None

This course will present special topics on New Testament Exegesis and relate them to the practice of preaching and teaching for pastor. The course will feature a selected New Testament scholar and will require the student to produce a major integration paper.

DT 780 Doctoral Dissertation (8)

Prerequisite: Completion of 34 doctoral units

This course will concentrate on the writing of the student’s doctoral dissertation. The student will be required to develop their topic outline using the material developed in the methods seminar and then to write the dissertation under the guidance of a faculty member.

***NT 720 New Testament Seminar (6)**

Lecture: 90 hours

Prerequisite: None

This course is similar to the Old Testament seminar in that it will cover current exegetical issues and scholarship issues within New Testament research. Pastoral ministry problems will be focused on using these issues discovered in the seminar. The student will be required to do an integration paper for completion of the course requirements.

***OT 710 Old Testament Seminar (6)**

Lecture: 90 hours

Prerequisite: None

This seminar is designed to acquaint the student with current scholarship in Old Testament exegesis and to analyze critical issues dealing with Old Testament themes. Scholars will be scheduled to conduct seminars covering a topic related to Old Testament issues and then will relate these issues to Pastoral problems faced in the ministry. The student will be required to do significant amounts of reading prior to the seminar and then to write an integration research paper after the class.

PT 740 Pastoral Theology Seminar (6)

Lecture: 90 hours

Prerequisite: None

The course will survey current thought on pastoral theology and its implications for pastoral ministry. The student will be required to analyze a current field

of research using Biblical and Theological foundations and to provide a critique of current research.

***PT 750 Christian Leadership Seminar (6)**

Lecture: 90 hours

Prerequisite: None

The student will analyze current theories of Christian leadership using theological and psychological models of leadership development. The student will be required to examine personal weaknesses in leadership and then will be required to provide an analysis of their own style of leadership. The student will be required to also develop a life path for future leadership development.

ST 730 Spirituality Seminar (6)

Lecture: 90 hours

Prerequisite: None

This course will focus on the development of Christian spirituality and the responsibility of the Pastor in leading congregations into spiritual growth. The course will focus on personal pastoral spirituality. The course will require the student to evaluate congregational spirituality and to develop programs of spiritual formation incorporating research on spiritual formation from both psychological fields of study and current Christian spirituality research.

SCHOOL OF LANGUAGE

The School of Language currently offers a certificate program in English as a Second Language (ESL).

ENGLISH AS A SECOND LANGUAGE

English, considered a global language, is the most widely spoken first and second language in the world, and also claims the most number of students studying the language. Though the United States of America does not have an official language, English comes the closest to playing that role. Learning English as a Second Language can be an enriching experience and might also open opportunities for a more rewarding adventure both here and abroad.

The purpose of the English as a Second Language program is to enhance the lives our students through helping them learn and acquire English as a language that can be used in their daily lives.

Program Objectives

1. Make English an integral part of our students' daily lives.
2. Create an environment where language learning is enjoyable and nonthreatening.
3. Utilize latest second language acquisition techniques in the classroom.

Program Learning Outcomes

1. Listen and comprehend verbal descriptions of moderate pace;
2. Read and understand advanced-level texts, articles, and books;
3. Speak and articulate narratives;
4. Carry a conversation of varying topics;
5. Write short, organized compositions ranging from a few paragraphs to a few pages;
6. Visually and aurally identify, write, and pronounce a list of 1,600 to 1,800 high frequency word families.

This program is not designed to lead to employment.

Program Requirements

The entire ESL program consists of a total of 1080 clock hours. Each level of the program is 180 clock hours. Completion of the ESL program is determined with the successful passage of a comprehensive exam at the conclusion of Level 6 coursework.

ESL Beginning (360 clock hours)

| | |
|----------------|-----|
| ESL 1A Level 1 | 180 |
| ESL 1B Level 2 | 180 |

ESL Intermediate (360 clock hours)

| | |
|----------------|-----|
| ESL 2A Level 3 | 180 |
| ESL 2B Level 4 | 180 |

ESL Advanced (360 clock hours)

| | |
|----------------|-----|
| ESL 3A Level 5 | 180 |
| ESL 3B Level 6 | 180 |

**Course Descriptions
(courses offered on an as-needed basis)**

ESL 1A Level 1 (180)

Lecture: 180 hours

Prerequisite: None

This course is designed for the student without any English communication skills. The course introduces the student to basic vocabulary development of approximately 200 words and builds a beginning understanding of pronunciation.

ESL 1B Level 2 (180)

Lecture: 180 hours

Prerequisite: ESL 1A or passing score on Placement exam

This course is designed to introduce the student to basic sentence structure and conversation skills and will expand the student's vocabulary to approximately 500 words.

ESL 2A Level 3 (180)

Lecture: 180 hours

Prerequisite: ESL 1B or passing score on Placement exam

This course will introduce the student to sentence structures for beginning writing and will introduce the student to basic compound sentence construction, and verb tenses. The student will expand usable vocabulary to approximately 1,000 words.

ESL 2B Level 4 (180)

Lecture: 180 hours

Prerequisite: ESL 2A or passing score on Placement exam

The student will be required to learn sentence and grammar using more verb tenses and will further develop pronunciation skills. Additionally, the student will be required to practice communication skills within basic business settings and cultural settings.

ESL 3A Level 5 (180)

Lecture: 180 hours

Prerequisite: ESL 2B or passing score on Placement exam

The student will have expanded vocabulary of approximately 1500 words and will begin to read and interact with academic magazines and journals.

ESL 3B Level 6 (180)

Lecture: 180 hours

Prerequisite: ESL 3A or passing score on Placement exam

The student will expand English usage to demonstrate ability to interact with cultural activities such as news shows, talk programs, academic lectures and writing three- to five- page essays on selected topics.

APPENDIX A

STUDENT CODE OF CONDUCT

The Code of Conduct exists to protect the persons and property of the St. Luke community and the rights of the persons in the St. Luke community. It also fosters and enhances the academic mission of the institution. While the Code of Conduct does not include all of the activities that may adversely affect the St. Luke community, they do apply to the conduct of all registered students and registered student organizations within St. Luke University.

St. Luke premises include building and facilities. Persons are to report violations of the Code of Conduct to the Director of Student Affairs. As members of St. Luke, students are also subject to city, county, state, and federal laws. Legal action in addition to St. Luke disciplinary action may take place. The institution's decision in disciplinary matters is independent of off campus legal action. St. Luke has developed minimum and maximum sanctions in the disciplinary decision-making process in order to ensure fairness.

Behavioral Standards / Morality Policy

The behavioral standards of St. Luke are based on Christian principles and are designed to benefit the St. Luke community as shown in Statements of Ethical Values. Therefore, each student, who joins the St. Luke community, agrees to accept the responsibility of maintaining a "Christian" lifestyle and demonstrate cooperation in adhering to the expectations of the university as they relate to behavior and discipline.

Unacceptable Standards of Conduct

The following behaviors will not be tolerated on or off campus of St. Luke University:

- Intimidation/Harassment/Sexual Harassment
- Stalking
- Rape
- Aggravated assault/Fighting
- Arson
- Destruction of property
- Possession of an illegal weapon
- Alcohol or drug distribution/usage/sale or possession
- Physical violence towards another person
- Disrespect to a faculty member or staff
- Verbally abusive language

- Theft
- Smoking in room

The above items are not all inclusive. There may be additional items determined by the Director of Student Affairs.

Public Display of Affection Standards and of Lewd Behaviors

- Couples are not to lie on the floor together, sit, stand, or strike any other pose that may be considered sexually suggestive or offensive
- Lewd/Indecent Behavior – The following behaviors are prohibited:
 - Public nudity.
 - Public viewing or displaying of pornography

Alcoholic Beverages

Possession of alcoholic beverages either opened or unopened container, anywhere on St. Luke property, including cars is prohibited.

Drugs

Students who are involved in any drug related violations are subject to criminal action, and it is the duty of St. Luke University to report these individuals to the legal authorities. The illegal possession or use of narcotics or drugs at the events sponsored by St. Luke, and in areas outside the campus also involves such related incidents that are subjected to prosecution under local, state, and federal laws.

Weapons Policy

The possession of firearms, ammunition, explosives, incendiary devices, and other weapons anywhere on the St. Luke campus is prohibited.

A "weapon" shall include anything likely to be used, or designed to be used, in destroying, defeating, or injuring a person or property; or an instrument by the use of which a fatal wound may probably or possibly be given or damage to property may be inflicted.

Disruption of St. Luke Functions

St. Luke promotes academic freedom and discussion. However, anyone who is disruptive to St Luke operations, violates policies, or violates Southern California law, may be prohibited from coming on St. Luke premises, prohibited from attending St. Luke University and/or may be arrested, or criminally prosecuted.

Theft

Theft, regardless of where it occurred, stealing from another person, agency, institution, the taking of property belonging to another, with the intent of converting the property to one's personal use; unauthorized use of another's credit card; and acting as an accomplice to theft.

Physical Abuse

An encounter with blows or other personal violence, which includes rape, sexual assault, pushing, shoving, and other acts of physical abuse or contact which threatens or endangers the health or safety of another.

Verbal Abuse or Harassment

The use of verbally abusive language by any person on St. Luke is prohibited. This includes language which insult, or challenges another person to use a violent profanity, verbal assaults, sexist, or racist remarks or behavior.

Tobacco-Free Policy

Smoking and use of all tobacco products is prohibited in all buildings and all grounds of St. Luke. This policy applies to all faculty, staff, students and visitors at St. Luke.

Fire Safety and Equipment

The following behaviors are prohibited:

- Causing a false alarm, arson, and tampering with or obstructing the fire alarm system, smoke detectors, sprinkler system, emergency exits, fire extinguishers, exit signs, and other equipment.
- Failing to evacuate a University building during any fire and/or emergency alarms, including drills, or reentering the building before the all clear sign is given.
- Failing to report any instance of fire or smoke to Public Safety or other University official.

Other Violations

Other violations that not listed in this section but may be deemed to be disruptive to the university environment may be in violation of the Student Code of Conduct and result in dismissal from the University.

Disciplinary Policies

A student who violates the university's policies and Student Code of Conduct will be subject to disciplinary action which can result in one of the following seven levels of disciplinary action: (1)

official warning; (2) reprimand; (3) property restitution; (4) assignment of failing grade; (5) probation; (6) suspension; and (7) dismissal. Once dismissed students cannot be readmitted to St. Luke unless all faculty members would discuss about the issue and unanimously agree on the re-admission.

St. Luke University's rules of student conduct are based on the California Administrative Code, Title 5, Section 41301.

STUDENT DUE PROCESS PROCEDURES

The Chief Academic Officer shall read the complaint, and if it warrants further investigation, then a copy of the complaint should be forwarded to the person against whom the complaint is made ("respondent"). If the allegations would not constitute a violation of a University policy, then the Chief Academic Officer should inform the grievant in writing that the allegations are not subject to further investigation.

The respondent shall be given 14 calendar days from receipt of the complaint to return a written response to the relevant Faculty, who then shall initiate a reasonable investigation into the matter. The investigation may include meeting with the parties, talking with witnesses, and reviewing any supporting documents. A grievant may elect to withdraw a formal complaint at any time; however, the University reserves the right to investigate all complaints in order to protect the interests of the University and its community.

Within a reasonable time, the Chief Academic Officer shall make a decision based on the formal complaint, response, and any other relevant information. This decision shall be in writing and shall consist of factual findings, conclusions, and a remedy if one is appropriate. All parties shall receive a copy of the decision.

Any party may submit a written request for appeal of the decision to the president of the University within 14 calendar days from receipt of the decision. The request for appeal must specifically set forth all grounds for appeal. The non-appealing party must be given the opportunity to respond in writing to the request for appeal. Within a reasonable time, the president shall make a decision based on the complaint, response, decision, request for appeal, any response to the appeal, and any meeting the president held in regard to the appeal. The decision

of the president shall be final. All parties shall receive a copy of the president's decision.

All written decisions made and materials produced in a grievance conducted under this procedure shall be retained by the Chief Academic Officer for at least five years from the date that the final decision was issued.

A student or any member of the public may file a complaint about this institution with the Bureau for Private Postsecondary Education by calling (888) 370-7589 or by completing a complaint form, which can be obtained on the bureau's internet Web site <http://www.bppe.gov>.

Bureau for Private Postsecondary Education
1747 N. Market Blvd., Suite 225
Sacramento, CA 95834

Students may also contact TRACS Accrediting Agency by completing the TRACS Complaint Form found on http://tracs.org/TRACS_Publications.html and submitting it to:

President
Transnational Associations of Christian Colleges and Schools
15935 Forest Rd.
Forest, VA 24551

FAMILY EDUCATIONAL RIGHTS AND PRIVACY ACT (FERPA)

In compliance with Family Educational Rights and Privacy Act of 1974 (FERPA), St Luke University will disclose information from a student's education records only with the prior written consent of the student – except that education records may be disclosed without consent to University officials having a legitimate educational interest in the records and to third parties specifically authorized by FERPA.

Education records are defined as records, files, documents, data and other materials that contain information directly related to a student and are maintained by St Luke University. Students at the University have the following rights regarding their education records:

- a. To have access to their education records.
- b. To consent to release a record to a third party.
- c. To request nondisclosure of directory information.

- d. To seek amendment of information which the student demonstrates is inaccurate.
- e. To be notified of their privacy rights.
- f. To file complaints with the Family Policy Compliance Office of the U.S. Department of Education concerning alleged failures by the University to comply with FERPA.

PRIVACY OF STUDENT RECORDS

The University's policy is to maintain the confidentiality of student academic records. No one outside of the institution shall have access to, nor will the University disclose, any information from a student's academic records without the written consent of the student except: University personnel, officials of other institutions in which the student seeks to enroll, persons or organizations providing student financial aid, accrediting agencies, in compliance with a judicial order; In an emergency in order to protect the health or safety of a student or other persons.

The student's academic file is the sole property of the University. The University will not release copies of documents of course work from other institutions attended.

All information regarding student records will be protected under the Federal Right to Privacy Act.

All student records as required by CCR 71920 are maintained. CCR 71920 requires:

- (a) The institution shall maintain a file for each student who enrolls in the institution whether or not the student completes the educational service.
- (b) In addition to the requirements of California Education Code (CEC) 94900 ((a) An institution shall maintain records of the name, address, e-mail address, and telephone number of each student who is enrolled in an educational program in that institution. (b) An institution shall maintain, for each student granted a degree or certificate by that institution, permanent records of all of the following: (1) The degree or certificate granted and the date on which that degree or certificate was granted. (2) The courses and units on which the certificate or degree was based. (3) The grades earned by the student in each of those courses), the file shall contain all of the following pertinent student records: (1) Written records and transcripts of any formal education or training, testing, or experience that are relevant to the student's qualifications for admission

to the institution or the institution's award of credit or acceptance of transfer credits including the following: (A) Verification of high school completion or equivalency or other documentation establishing the student's ability to do college level work, such as successful completion of an ability-to-benefit test; (B) Records documenting units of credit earned at other institutions that have been accepted and applied by the institution as transfer credits toward the student's completion of an educational program; (C) Grades or findings from any examination of academic ability or educational achievement used for admission or college placement purposes; (D) All of the documents evidencing a student's prior experiential learning upon which the institution and the faculty base the award of any credit;

(2) Personal information regarding a student's age, gender, and ethnicity if that information has been voluntarily supplied by the student;

(3) Copies of all documents signed by the student, including contracts, instruments of indebtedness, and documents relating to financial aid;

(4) Records of the dates of enrollment and, if applicable, withdrawal from the institution, leaves of absence, and graduation; and

(5) In addition to the requirements of CEC 94900(b) ((b) An institution shall maintain, for each student granted a degree or certificate by that institution, permanent records of all of the following: (1) The degree or certificate granted and the date on which that degree or certificate was granted. (2) The courses and units on which the certificate or degree was based. (3) The grades earned by the student in each of those courses), a transcript showing all of the following: (A) The courses or other educational programs that were completed, or were attempted but not completed, and the dates of completion or withdrawal; (B) Credit awarded for prior experiential learning, including the course title for which credit was awarded and the amount of credit; (C) Credit for courses earned at other institutions; (D) Credit based on any examination of academic ability or educational achievement used for admission or college placement purposes; (E) The name, address, website address, and telephone number of the institution.

(6) For independent study courses, course outlines or learning contracts signed by the faculty and administrators who approved the course;

(7) The dissertations, theses, and other student projects submitted by graduate students;

(8) A copy of documents relating to student financial aid that are required to be maintained by law or by a loan guarantee agency;

(9) A document showing the total amount of money received from or on behalf of the student and the date or dates on which the money was received;

(10) A document specifying the amount of a refund, including the amount refunded for tuition and the amount for other itemized charges, the method of calculating the refund, the date the refund was made, and the name and address of the person or entity to which the refund was sent;

(11) Copies of any official advisory notices or warnings regarding the student's progress; and

(12) Complaints received from the student.

All records are maintained in accordance with CCR 71930:

(a) An institution shall maintain all records required by the California Private Postsecondary Education Act of 2009 (Act) and this chapter. The records shall be maintained in this state.

(b) (1) In addition to permanently retaining a transcript as required by CEC 94900(b) ((b) An institution shall maintain, for each student granted a degree or certificate by that institution, permanent records of all of the following: (1) The degree or certificate granted and the date on which that degree or certificate was granted. (2) The courses and units on which the certificate or degree was based. (3) The grades earned by the student in each of those courses), the institution shall maintain for a period of 5 years the pertinent student records described in Section 71920 from the student's date of completion or withdrawal.

(2) Notwithstanding (b)(1), the institution shall maintain records relating to federal financial aid programs as provided by federal law.

(c) A record is considered current for three years following a student's completion or withdrawal. A record may be stored on microfilm, microfiche, computer disk, or any other method of record storage only if all of the following apply:

(1) The record may be stored without loss of information or legibility for the period within which the record is required to be maintained by the Act;

(2) For a record that is current, the institution maintains functioning devices that can immediately reproduce exact, legible printed copies of stored records. The devices shall be maintained in reasonably close proximity to the stored records at the institution's primary administrative location in California. For a record that is no longer current, the institution shall be able to reproduce exact, legible printed copies within two (2) business days.

(3) The institution has personnel scheduled to be present at all times during normal business hours who

know how to operate the devices and can explain the operation of the devices to any person authorized by the Act to inspect and copy records; and

(4) Any person authorized by the Act or this chapter to inspect and copy records shall be given immediate access to the document reproduction devices for the purpose of inspecting and copying stored records and shall, upon request, reimburse the institution for the reasonable cost of using the institution's equipment and material to make copies at a rate not to exceed ten cents (\$0.10) per page.

(d) The institution shall maintain a second set of all academic and financial records required by the Act and this chapter at a different location unless the original records, including records stored pursuant to subdivision (b) of this section, are maintained in a manner secure from damage or loss. An acceptable manner of storage under this subsection would include fire resistant cabinets.

(e) All records that the institution is required to maintain by the Act or this chapter shall be made immediately available by the institution for inspection and copying during normal business hours by the Bureau and any entity authorized to conduct investigations.

(f) If an institution closes, the institution and its owners are jointly and severally responsible to arrange at their expense for the storage and safekeeping in California of all records required to be maintained by the Act and this chapter for as long as those records must be maintained. The repository of the records shall make these records immediately available for inspection and copying, without charge except as allowed under subdivision (c)(4) of this section, during normal business hours by any entity authorized by law to inspect and copy records.

Student Record Retention Policy

The student record retention policy is exclusive to the following documents and records:

Records kept for five (5) years:

Application and Admissions Packet
Transcripts from prior institutions
Grade Reports
Complaint Forms

Records kept Permanently:

St. Luke University transcripts
St. Luke University degrees or certificates

All other records may not be retained beyond one (1) year.

CATALOG ACCURACY AND EFFECTIVE DATES

St. Luke University's catalog contains current information regarding the admission, degree requirements, fees, policies, and course of offerings. The policy of St. Luke University is to give advance notice of change, whenever possible, to permit adjustment. However, the administration and the faculty reserve the right to modify, edit, and/or otherwise correct the catalog.

The catalog is updated a minimum of once every year for release by August 1 and is available for download on the St. Luke University website at www.stlukeuniv.edu. Updates to the catalog may be made throughout the year. The latest update is immediately available on the university website.

STUDENT ACHIEVEMENT

Student retention and graduation rates are updated on an annual basis upon the start of the new academic year.

2023 College Retention Rates*

| Program | 2022-2023 | 2021-2022 | 2020-2021 | 3-year average |
|----------|-----------|-----------|-----------|----------------|
| Bachelor | 71% | 67% | 85% | 74% |
| Graduate | 83% | 75% | 91% | 83% |

*Retention rates for associates and bachelors programs are fall-to-fall based on first-time, full-time status. Graduate programs utilize total enrollment from fall-to-fall.

2023 College Graduation Rates**

| Program | 2017 cohort | 2016 cohort | 2015 cohort | 3-year average |
|----------|-------------|-------------|-------------|----------------|
| Bachelor | 50% | 38% | 100% | 63% |
| Graduate | 40% | 0% | 100% | 47% |

**The completion and graduation rates for certificates, associate degrees, and bachelor degrees are measured at 150% of the expected time for completion (bachelor degree rate is 6 years from the first enrollment).

QUESTIONS

Any questions a student may have regarding this catalog that have not been satisfactorily answered by the institution may be directed to the Bureau for Private Postsecondary Education at 1747 N. Market Blvd., Suite 225, Sacramento, CA 95834, www.bppe.ca.gov, (888) 370-7589 or by fax (916) 263-1897.

APPENDIX B

BOARD OF DIRECTORS

Dr. Jong Un Lee – Chairman
 Dr. Kyung Sook Min – Vice Chairwoman
 Mr. Seong Soo Han
 Mr. In Won Kang
 Dr. Young D. Kim – Ex Officio

ADMINISTRATORS

Dr. Young Dae Kim – President
 Dr. Sang Chan Han – Chief Academic Officer
 Mr. David Kim – Chief Financial Officer
 Rev. Shin Woo Lee – Director of Student Affairs
 Ms. Jung Kim – Director of Administration

STAFF

Richy Strobel – Librarian
 Megan Cho – Registrar
 Li Hua Jin – Admissions Officer
 Mei Yan Quan – Bursar
 Li Hua Jin – International Students Counselor

SCHOOL OF THEOLOGY FACULTY

Full-Time

Cho, Kyong Jin

Ph.D. Talbot School of Theology, La Mirada, CA.
 M.S. Fuller School of Theology, Pasadena, CA.
 M.A. Talbot School of Theology, La Mirada, CA.
 B.A. World Mission University, Los Angeles, CA.
 B.A. Calvary Bible College, Murrieta, CA.
 Field of Specialization: Psychology, Biblical Studies,
 Religious Education, Intercultural Studies.

Kim, Kyung Hwan

D.Min. Fuller Theological Seminary, Pasadena, CA.
 D.Miss. Midwest Theological School, St. Louis, MO.
 M.A. Korean Presbyterian Mission Graduate
 School, Seoul, Korea.
 B.A. Han Shin University, Seoul, Korea.
 Field of Specialization: Biblical Theology, Missiology.

Lee, Hyun Ae

Ph.D. Talbot School of Theology, La Mirada, CA.
 M.A. Talbot School of Theology, La Mirada, CA.
 B.A. Dongduk Women's University, Seoul, Korea.
 Field of Specialization: Biblical Studies, Spiritual
 Formation, Christian Education.

Lee, Shin Woo

M.Div. Fuller Theological Seminary, Pasadena, CA.
 B.A. University of Southern California, LA, CA.
 Field of Specialization: Biblical Studies, Historical
 Studies.

Adjunct

Cho, Hyo Ju

M.Div. St. Luke University, Pomona, CA.
 B.S. Duksung Women's University, Seoul, Korea.
 A.S. The New School, New York, NY.
 Field of Specialization: Biblical Studies.

Cho, Naeyoun

Ph.D. (Cand.) Claremont School of Theology,
 Claremont, CA.
 M.Div. Seoul Theological University, Bucheon,
 Korea.
 B.A. Handon Global University, Gyeongbuk,
 Korea.
 Field of Specialization: Biblical Studies, Biblical
 Language, Exegetical Theology (Old
 Testament).

Choi, Sungyi

Ph.D. Claremont School of Theology, Claremont,
 CA.
 M.A. Princeton Theological Seminary, Princeton,
 NJ.
 B.A. New York University, New York, NY.
 Field of Specialization: Christian Education, Christian
 Theology, Psychology, English.

Han, David Sang Chan

Th.D. Hamburg University, Hamburg, Germany.
 S.T.M. Philips University, Marburg, Germany.
 M.Div. Presbyterian College and Theological
 Seminary, Seoul, Korea.
 B.A. Chung Ang University, Seoul, Korea.
 Field of Specialization: Biblical Theology, Historical
 Theology, Systematic Theology.

Jeong, Seongeun

Ph.D. Claremont School of Theology, Claremont,
 CA.
 Th.M. Candler School of Theology, Atlanta, GA.
 M.Div. Korea Methodist Theological University,
 Seoul, Korea.
 B.A. Kon Kuk University, Seoul, Korea.
 Field of Specialization: Biblical Language, Old
 Testament, Exegetical Theology.

Kang, Jung Ja

Ph.D. Talbot School of Theology, La Mirada, CA.
 M.A. Graduate School of Chong-Shin University,
 Seoul, Korea.
 B.A. Anyang University, Anyang, Korea.
 Field of Specialization: Christian Education, Christian
 Ethics.

Kang, Soonhae

Ed.D. Talbot School of Theology, La Mirada, CA.
 M.Div. Koshin Theological Seminary, Pusan, Korea.
 B.A. Ewha Women's University, Seoul, Korea.
 Field of Specialization: Historical Theology, Christian
 Education.

Kim, Christine

M.L.I.S. California State University, San Jose, CA.
 B.A. University of California, Irvine, CA.
 Field of Specialization: World History.

Kim, David

Ph.D. (ABD) Liberty University, Lynchburg, VA.
 M.A. California State University, Fullerton, CA.
 B.A. University of California, Los Angeles, CA.
 Field of Specialization: English.

Kim, Soo J.

Ph.D. Claremont School of Theology, Claremont,
 CA.
 M.T.S. Calvin Theological Seminary, Grand Rapids,
 MI.
 M.Div. Evangelia University, Anaheim, CA.
 B.A. Seoul National University, Seoul, Korea.
 Field of Specialization: Biblical Theology, Old
 Testament, Biblical Language.

Kim, Young Dae

D.Min. Fuller Theological Seminary, Pasadena, CA.
 M.A.Th. Concordia University, Irvine, CA.
 M.CE. International Theological Seminary, El
 Monte, CA.
 M.Div. Presbyterian Theological Seminary in
 America, Santa Fe Springs, CA
 B.S. Dan Kook University, Seoul, Korea.
 Field of Specialization: Biblical Theology, Historical
 Theology, Christian Education, Natural
 Science, Health Science.

Ko, Jongpil

Ph.D. Talbot School of Theology, La Mirada, CA.
 M.A. Talbot School of Theology, La Mirada, CA.
 M.Div. Baekseok University, Korea.

B.A. Industrial Training University of Incheon,
 Korea.

Field of Specialization: Biblical Studies, Spiritual
 Formation, Christian Education.

Lee, Taehoon

Ph.D. Claremont School of Theology, Claremont,
 CA.
 M.A. Drew University, Madison, NJ.
 M.Div. Drew University, Madison, NJ.
 M.Th. Methodist Theological University, Seoul,
 Korea.
 B.Th. Methodist Theological University, Seoul,
 Korea.
 Field of Specialization: Biblical Studies, Biblical
 Language, Exegetical Theology (New
 Testament).

Nam, Young Sung

M.Div. Talbot School of Theology, La Mirada, CA.
 Th.M. Central (OnSuk) Theological University,
 Yongin, Korea.
 B.A. Yonsei University, Seoul, Korea.
 Field of Specialization: Biblical Studies, Spiritual
 Training.

Park, Dong-Sik

Ph.D. Claremont Graduate University, Claremont,
 CA.
 M.A.P.T. Columbia Theological Seminary, Decatur,
 GA.
 M.Div. Columbia Theological Seminary, Decatur,
 GA.
 B.A. Keimyung University, Daegu, Korea.
 Field of Specialization: Systematic Theology,
 Literature, Philosophy.

Park, Samuel-Dae

D.D. California Graduate School of Theology,
 Garden Grove, CA.
 M.Div. Mission Theological Seminary, Hartfield, PA.
 M.A. Mission Theological Seminary, Hartfield, PA.
 Th.B. Kosin University, Pusan, Korea.
 Field of Specialization: Biblical Studies, Practical
 Studies.

Song, Yil

Ph.D. Claremont Graduate University, Claremont,
 CA.
 M.A. Claremont Graduate University, Claremont,
 CA.
 M.Div. Presbyterian College & Theological
 Seminary, Seoul, Korea.

B.A. HanKuk University of Foreign Studies, Seoul, Korea.

Field of Specialization: Biblical Theology, Hermeneutics, New Testament, Biblical Language.

Yoo, SiHa

Ph.D. Biola University, La Mirada, CA.

M.A. Talbot School of Theology, La Mirada, CA.

Th.M. Asian United Theological University, Seoul, Korea.

M.Div. Chongshin University, Seoul, Korea.

B.S. Pusan National University, Pusan, Korea.

Field of Specialization: Biblical Studies, Psychology, Philosophy, Ethics, Cross-Cultural Studies, Spiritual Training, Foundations of Christian Theology

SCHOOL OF LANGUAGE FACULTY

Full-Time

Kim, David – ESL Director

Ph.D. (Cand.) Liberty University, Lynchburg, VA.

M.A. California State University, Fullerton, CA.

B.A. University of California, Los Angeles, CA.

Part-Time

Clark, Cynthia

B.A. California Polytechnic University, Pomona, CA.

Strobel, Richy

M.L.I.S. California State University, San Jose, CA.

B.A. California State University, Fullerton, CA.

ACADEMIC CALENDAR

SCHOOL OF THEOLOGY

2023 – 2024

Fall Semester

| | |
|--|------------------------|
| New Student Orientation | August 2, 2023 |
| First day of semester | August 9, 2023 |
| Labor Day (campus closed) | September 4, 2023 |
| Columbus Day (no classes) | October 9, 2023 |
| Thanksgiving Break (campus closed) | November 21 – 25, 2023 |
| Last day of semester | December 4, 2023 |

Winter Session (Intensive)

| | |
|-------------------------------------|-----------------------------|
| First day of session | December 11, 2023 |
| Christmas Day (campus closed) | December 25, 2023 |
| D.Min. Winter Session | Dec 18, 2023 – Jan 12, 2024 |
| Last day of session | January 12, 2024 |

Spring Semester

| | |
|------------------------------------|---------------------|
| New Student Orientation | January 10, 2024 |
| First day of semester | January 17, 2024 |
| Presidents' Day (no classes) | February 19, 2024 |
| Easter Break (campus closed) | March 25 – 29, 2024 |
| Last day of semester | May 14, 2024 |

Summer Session (Intensive)

| | |
|--|-------------------|
| First day of session | May 20, 2024 |
| D.Min. Summer Session A | June 3 – 14, 2024 |
| Independence Day (campus closed) | July 4, 2024 |
| D.Min. Summer Session B | July 8 – 19, 2024 |
| Last day of session | July 19, 2024 |

The academic calendar is subject to change.

ACADEMIC CALENDAR

SCHOOL OF LANGUAGE

2023 – 2024

Fall Term

New Student Orientation (10AM), Opening Worship (11AM)..... September 27, 2023
First day of term October 2, 2023
Thanksgiving Break (campus closed)..... November 20 – 25, 2023
Last day of term December 16, 2023

Winter Term

New Student Orientation (10AM), Opening Worship (11AM)..... January 3, 2024
First day of term January 8, 2024
Martin Luther King, Jr. Day (campus closed)..... January 15, 2024
Last day of term March 16, 2024

Spring Term

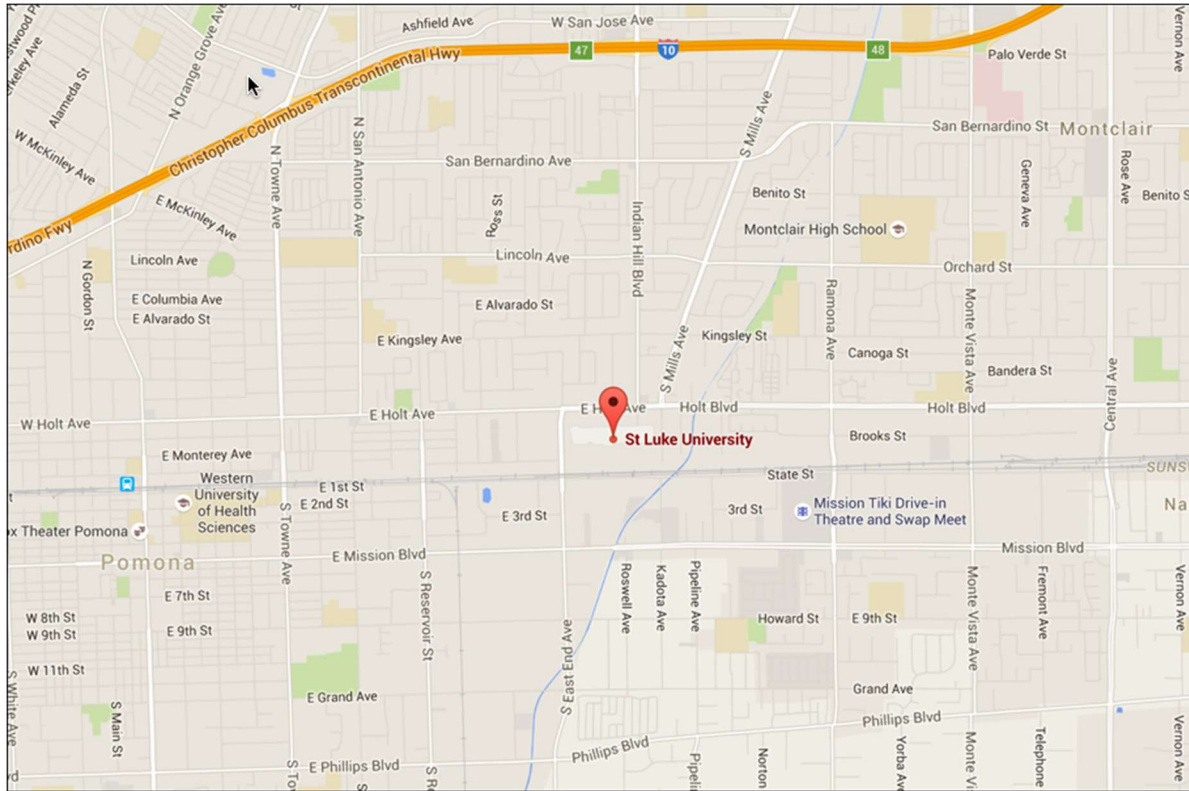
New Student Orientation (10AM), Opening Worship (11AM)..... April 3, 2024
First day of term April 8, 2024
Memorial Day (campus closed)..... May 27, 2024
Last day of term June 15, 2024

Summer Term

New Student Orientation (10AM), Opening Worship (11AM)..... July 3, 2024
First day of term July 8, 2024
Labor Day (campus closed) September 2, 2024
Last day of term September 14, 2024

The academic calendar is subject to change.

CAMPUS LOCATION AND MAP



St. Luke University is located at:
1460 E. Holt Ave., Suite 72
Pomona, CA 91767

Tel: (909) 623-0302
Fax: (909) 623-0480
Web: stlukeuniv.edu
Email: info@stlukeuniv.edu

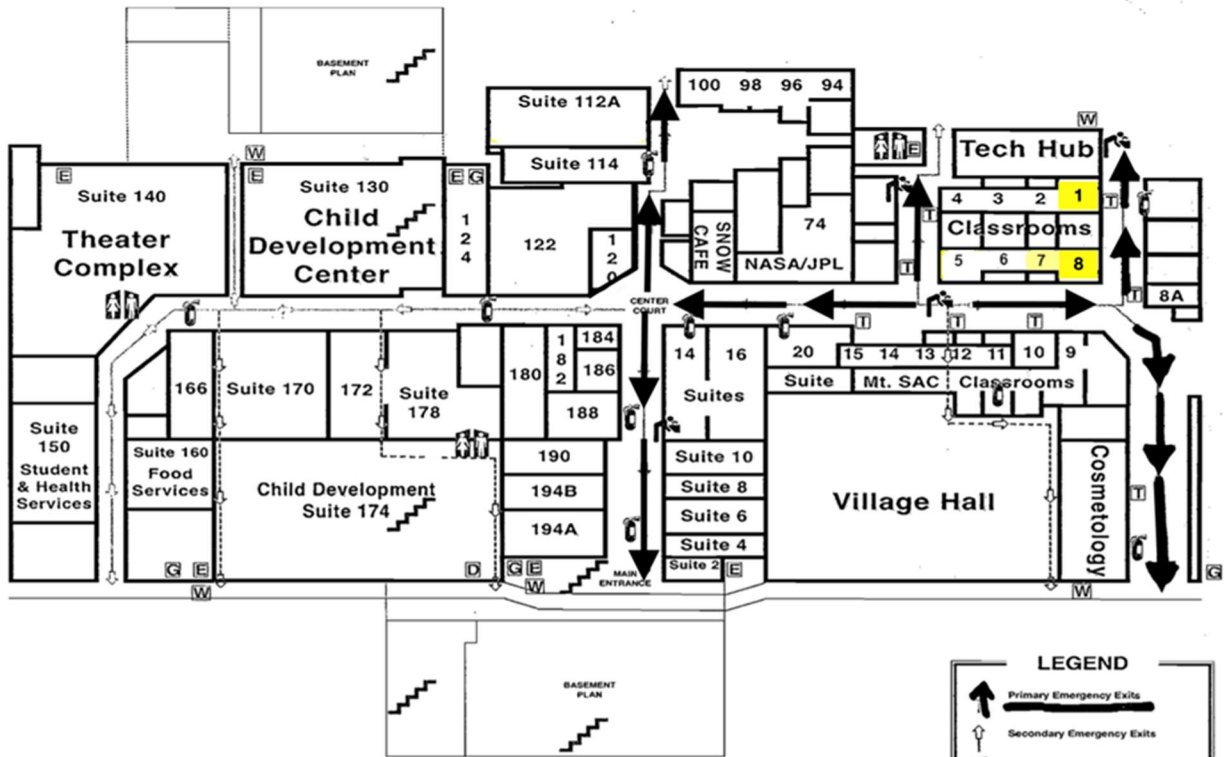
EMERGENCY PLAN

MEDICAL CARE

| | |
|---|---|
| Paramedics | 9-1-1 (emergencies only) |
| Rite Medical Clinic Urgent Care 502 W. Holt Ave. Pomona, CA 91768 | (909) 620-8500 (emergencies and non-emergencies) |
| Acupuncturist | Dr. Young Kim, L.Ac. youngkim@stlukeuniv.edu |

CAMPUS SECURITY

| | |
|-----------------------------|--|
| Pomona Police Department | 9-1-1 (emergencies only) |
| Campus Security | (909) 784-6651 (emergencies and non-emergencies) |
| Director of Administration | Ms. Jung Kim jungkim@stlukeuniv.edu |
| Director of Student Affairs | Rev. Shin Woo Lee shinwoolee@stlukeuniv.edu |



Command and Accountability Center
(Flagpole at north end of front parking lot)

| LEGEND | |
|--------|---|
| | Primary Emergency Exits |
| | Secondary Emergency Exits |
| | Fire Extinguishers |
| | Fire Alarm Pull Stations |
| | Stairs |
| | Drinking Water (19-20 gallon water barrels) |
| | Water Main |
| | Electrical Main |
| | Gas Main |
| | First Aid |
| | Drinking Fountain |