



MAOF

Mexican American Opportunity Foundation

2130 Chester Ave. #200, Bakersfield, CA 93301 | 661-558-0103 | www.maof.org

Mexican American Opportunity Foundation

Empowering Families from Child to Senior

SCHOOL PERFORMANCE FACT SHEET

CALENDAR YEARS 2022 & 2023

Bookkeeping/Payroll Accounting – (720 Clock Hours)

Effective 7/1/2023 (896 Clock Hours)

On-Time Completion Rates (Graduation Rates)

Includes data for the two calendar years prior to reporting.

Calendar Year	Number of Students Who Began the Program	Students Available for Graduation	Number of On-Time Graduates	On-Time Completion Rate
2022	9	9	0	0%
2023	20	20	2	10%

Student's Initials: _____ Date: _____

Initial only after you have had sufficient time to read and understand the information.

150% TABLE OPTIONAL ↓

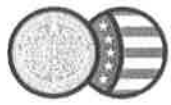
Students Completing Within 150% of the Published Program Length

Calendar Year	Number of Students Who Began the Program	Students Available for Graduation	150% Graduates	150% Completion Rate
2022	9	9	5	55.55%
2023	20	20	9	45%

**Included if the program is more than one year in length.

Student's Initials: _____ Date: _____

Initial only after you have had sufficient time to read and understand the information.



MAOF

Mexican American Opportunity Foundation
Empowering Families from Child to Senior

Mexican American Opportunity Foundation
2130 Chester Ave. #200, Bakersfield, CA 93301 | 661-558-0103 | www.maof.org

Job Placement Rates (includes data for the two calendar years prior to reporting)

Calendar Year	Number of Students Who Began Program	Number of Graduates	Graduates Available for Employment	Graduates Employed in the Field	Placement Rate % Employed in the Field
2022	9	5	5	5	100%
2023	20	9	9	7	77.77%

You may obtain from the institution a list of the employment positions determined to be in the field for which a student received education and training on our Catalog located on our website at www.maof.org under Bakersfield Skill Center.

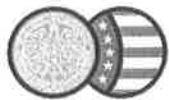
Gainfully Employed Categories (includes data for the two calendar years prior to reporting)

Part-Time vs. Full-Time Employment

Calendar Year	Graduate Employed in the Field 20-29 Hours Per Week	Graduates Employed in the Field at Least 30 Hours Per Week	Total Graduates Employed in the Field
2022	0	5	5
2023	1	6	7

Single Position vs. Concurrent Aggregated Position

Calendar Year	Graduates Employed in the Field in a Single Position	Graduates Employed in the Field in Concurrent Aggregated Positions	Total Graduates Employed in the Field
2022	5	0	5
2023	7	0	7



MAOF

Mexican American Opportunity Foundation

2130 Chester Ave. #200, Bakersfield, CA 93301 | 661-558-0103 | www.maof.org

Mexican American Opportunity Foundation

Empowering Families from Child to Senior

Self-Employed / Freelance Positions

Calendar Year	Graduates Employed who are Self-Employed or Working Freelance	Total Graduates Employed in the Field
2022	0	5
2023	0	7

Institutional Employment

Calendar Year	Graduates Employed in the Field who are Employed by the Institution, an Employer Owned by the Institution, or an Employer who Shares Ownership with the Institution.	Total Graduates Employed in the Field
2022	0	5
2023	0	7

Student's Initials: _____ Date: _____

Initial only after you have had sufficient time to read and understand the information.

License Examination Passage Rates (includes data for the two calendar years prior to reporting)

Calendar Year	Number of Graduates in Calendar Year	Number of Graduates Taking Exam	Number Who Passed First Available Exam	Number Who Failed First Available Exam	Passage Rate
2022	N/A	N/A	N/A	N/A	N/A
2023	N/A	N/A	N/A	N/A	N/A

Note: This program does not require a license examination and does not lead to a license examination. Therefore, data is not applicable and not available for this program.

Student's Initials: _____ Date: _____

Initial only after you have had sufficient time to read and understand the information.



MAOF

Mexican American Opportunity Foundation

2130 Chester Ave. #200, Bakersfield, CA 93301 | 661-558-0103 | www.maof.org

Mexican American Opportunity Foundation

Empowering Families from Child to Senior

Salary and Wage Information (includes data for the two calendar years prior to reporting)

Annual salary and wages reported for graduates employed in the field.

Calendar Year	Graduates Available for Employment	Graduates Employed in Field	\$10,001	\$15,001	\$30,001	\$35,001	\$40,001
			-	-	-	-	-
2022	5	5	0	0	4	1	0
2023	9	7	0	1	2	4	0

A list of sources used to substantiate salary disclosures is available from the school. To obtain this information, please contact the Program Coordinator at our main campus or call 661-558-0103.

Student's Initials: _____ Date: _____

Initial only after you have had sufficient time to read and understand the information.

Cost of Educational Program

Total charges for the program for students completing on time in 2022: \$4,167

Total charges may be higher for students that do not complete on time.

Total charges for the program for students completing on time in 2023: \$4,167

Total charges may be higher for students that do not complete on time.

Student's Initials: _____ Date: _____

Initial only after you have had sufficient time to read and understand the information.



MAOF

Mexican American Opportunity Foundation

2130 Chester Ave. #200, Bakersfield, CA 93301 | 661-558-0103 | www.maof.org

Mexican American Opportunity Foundation

Empowering Families from Child to Senior

Students at the MAOF Skill Center - Bakersfield are not eligible for federal student loans. This institution does not meet the U.S. Department of Education criteria that would allow its students to participate in federal student aid programs.

MAOF Skill Center- Bakersfield is a contracted training provider for the Workforce Innovations Opportunity Act (WIOA) administered locally by Employer's Training Resource (ETR). The institution does participate in the State of California's Eligible Training Provider List (ETPL) that provides customer-focused employment training resources for adults and dislocated workers. The ETPL program provides their own policies and disclosure to students who qualify under the program. The MAOF Skill Center-Bakersfield accepts **only** WIOA eligible students into its training programs.

The total cost of your training and related fees is fully covered by WIOA if you are determined eligible for training under WIOA rules. This is considered a State of California Financial Aid Program.

Student's Initials: _____ **Date:** _____

Initial only after you have had sufficient time to read and understand the information.

This fact sheet is filed with the Bureau for Private Postsecondary Education. Regardless of any information you may have relating to completion rates, placement rates, starting salaries, or license exam passage rates, this fact sheet contains the information as calculated pursuant to state law.

Any questions a student may have regarding this fact sheet that have not been satisfactorily answered by the institution may be directed to the Bureau for Private Postsecondary Education at 1747 N. Market Blvd, Suite 225, Sacramento, CA 95834, www.bppe.ca.gov, toll-free telephone number (888) 370-7589 or by fax (916) 263-1897.

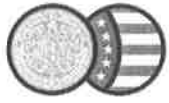
Student Name - Print

Student Signature

Date

School Official

Date



MAOF

Mexican American Opportunity Foundation
Empowering Families from Child to Senior

Mexican American Opportunity Foundation
2130 Chester Ave. #200, Bakersfield, CA 93301 | 661-558-0103 | www.maof.org

Definitions

- "Number of Students Who Began the Program" means the number of students who began a program who were scheduled to complete the program within 100% of the published program length within the reporting calendar year and excludes all students who cancelled during the cancellation period.
- "Students Available for Graduation" is the number of students who began the program minus the number of students who have died, been incarcerated, or been called to active military duty.
- "Number of On-time Graduates" is the number of students who completed the program within 100% of the published program length within the reporting calendar year.
- "On-time Completion Rate" is the number of on-time graduates divided by the number of students available for graduation.
- "150% Graduates" is the number of students who completed the program within 150% of the program length (includes on-time graduates).
- "150% Completion Rate" is the number of students who completed the program in the reported calendar year within 150% of the published program length, including on-time graduates, divided by the number of students available for graduation.
- "Graduates Available for Employment" means the number of graduates minus the number of graduates unavailable for employment.
- "Graduates Unavailable for Employment" means the graduates who, after graduation, die, become incarcerated, are called to active military duty, are international students that leave the United States or do not have a visa allowing employment in the United States, or are continuing their education in an accredited or bureau-approved postsecondary institution.
- "Graduates Employed in the Field" means graduates who beginning within six months after a student completes the applicable educational program are gainfully employed, whose employment has been reported, and for whom the institution has documented verification of employment. For occupations for which the state requires passing an examination, the six months period begins after the announcement of the examination results for the first examination available after a student completes an applicable educational program.
- "Placement Rate Employed in the Field" is calculated by dividing the number of graduates gainfully employed in the field by the number of graduates available for employment.
- "Number of Graduates Taking Exam" is the number of graduates who took the first available exam in the reported calendar year.



MAOF

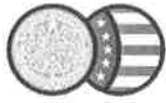
Mexican American Opportunity Foundation

2130 Chester Ave. #200, Bakersfield, CA 93301 | 661-558-0103 | www.maof.org

Mexican American Opportunity Foundation

Empowering Families from Child to Senior

-
- "First Available Exam Date" is the date for the first available exam after a student completed a program.
 - "Passage Rate" is calculated by dividing the number of graduates who passed the exam by the number of graduates who took the reported licensing exam.
 - "Number Who Passed First Available Exam" is the number of graduates who took and passed the first available licensing exam after completing the program.
 - "Salary" is as reported by graduate or graduate's employer.
 - "No Salary Information Reported" is the number of graduates for whom, after making reasonable attempts, the school was not able to obtain salary information.



MAOF

Mexican American Opportunity Foundation
Empowering Families from Child to Senior

Mexican American Opportunity Foundation
2130 Chester Ave. #200, Bakersfield, CA 93301 | 661-558-0103 | www.maof.org

STUDENT'S RIGHT TO CANCEL

You have the right to cancel your agreement for a program of instruction without any penalty or obligations through attendance at the first-class session or the seventh calendar day after enrollment, whichever is later.

A student may cancel this enrollment agreement by providing a written notice to the Program Coordinator at the MAOF SKILL CENTER – BAKERSFIELD, 2130 Chester Avenue Suite 200, Bakersfield, CA 93301.

I understand I may cancel or withdraw my agreement for enrollment into the program by _____ (Date) without any penalty or obligation.



MAOF

Mexican American Opportunity Foundation

2130 Chester Ave. #200, Bakersfield, CA 93301 | 661-558-0103 | www.maof.org

Mexican American Opportunity Foundation

Empowering Families from Child to Senior

SCHOOL PERFORMANCE FACT SHEET CALENDAR YEARS 2022 & 2023

Clerical Office Worker – (720 Clock Hours)
Effective 7/1/2023 (896 Clock Hours)

On-Time Completion Rates (Graduation Rates)

Includes data for the two calendar years prior to reporting.

Calendar Year	Number of Students Who Began the Program	Students Available for Graduation	Number of On-Time Graduates	On-Time Completion Rate
2022	2	2	1	50%
2023	14	14	3	21.43%

Student's Initials: _____ Date: _____

Initial only after you have had sufficient time to read and understand the information.

150% TABLE OPTIONAL ↓

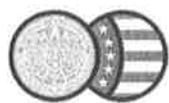
Students Completing Within 150% of the Published Program Length

Calendar Year	Number of Students Who Began the Program	Students Available for Graduation	150% Graduates	150% Completion Rate
2022	2	2	1	50%
2023	14	14	6	42.86%

**Included if the program is more than one year in length.

Student's Initials: _____ Date: _____

Initial only after you have had sufficient time to read and understand the information.



MAOF

Mexican American Opportunity Foundation

Empowering Families from Child to Senior

Mexican American Opportunity Foundation
2130 Chester Ave. #200, Bakersfield, CA 93301 | 661-558-0103 | www.maof.org

Job Placement Rates (includes data for the two calendar years prior to reporting)

Calendar Year	Number of Students Who Began Program	Number of Graduates	Graduates Available for Employment	Graduates Employed in the Field	Placement Rate % Employed in the Field
2022	2	1	1	1	100%
2023	14	6	6	5	83.33%

You may obtain from the institution a list of the employment positions determined to be in the field for which a student received education and training on our Catalog located on our website at www.maof.org under Bakersfield Skill Center.

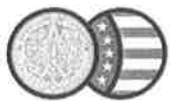
Gainfully Employed Categories (includes data for the two calendar years prior to reporting)

Part-Time vs. Full-Time Employment

Calendar Year	Graduate Employed in the Field 20-29 Hours Per Week	Graduates Employed in the Field at Least 30 Hours Per Week	Total Graduates Employed in the Field
2022	0	1	1
2023	1	4	5

Single Position vs. Concurrent Aggregated Position

Calendar Year	Graduates Employed in the Field in a Single Position	Graduates Employed in the Field in Concurrent Aggregated Positions	Total Graduates Employed in the Field
2022	1	0	1
2023	5	0	5



MAOF

Mexican American Opportunity Foundation

2130 Chester Ave. #200, Bakersfield, CA 93301 | 661-558-0103 | www.maof.org

Mexican American Opportunity Foundation

Empowering Families from Child to Senior

Self-Employed / Freelance Positions

Calendar Year	Graduates Employed who are Self-Employed or Working Freelance	Total Graduates Employed in the Field
2022	0	1
2023	0	5

Institutional Employment

Calendar Year	Graduates Employed in the Field who are Employed by the Institution, an Employer Owned by the Institution, or an Employer who Shares Ownership with the Institution.	Total Graduates Employed in the Field
2022	0	1
2023	0	5

Student's Initials: _____ Date: _____

Initial only after you have had sufficient time to read and understand the information.

License Examination Passage Rates (includes data for the two calendar years prior to reporting)

Calendar Year	Number of Graduates in Calendar Year	Number of Graduates Taking Exam	Number Who Passed First Available Exam	Number Who Failed First Available Exam	Passage Rate
2022	N/A	N/A	N/A	N/A	N/A
2023	N/A	N/A	N/A	N/A	N/A

Note: This program does not require a license examination and does not lead to a license examination. Therefore, data is not applicable and not available for this program.

Student's Initials: _____ Date: _____

Initial only after you have had sufficient time to read and understand the information.



MAOF

Mexican American Opportunity Foundation

2130 Chester Ave. #200, Bakersfield, CA 93301 | 661-558-0103 | www.maof.org

Mexican American Opportunity Foundation

Empowering Families from Child to Senior

Salary and Wage Information (includes data for the two calendar years prior to reporting)

Annual salary and wages reported for graduates employed in the field.

Calendar Year	Graduates Available for Employment	Graduates Employed in Field	\$10,001 -	\$15,001 -	\$30,001 -	\$35,001 -	\$40,001 -
			\$15,000	\$20,000	\$35,000	\$40,000	\$45,000
2022	2	1	0	0	1	0	1
2023	6	5	1	0	2	1	1

A list of sources used to substantiate salary disclosures is available from the school. Please contact the program Coordinator at 661-558-0103.

Student's Initials: _____ Date: _____

Initial only after you have had sufficient time to read and understand the information.

Cost of Educational Program

Total charges for the program for students completing on time in **2022**: \$4,167

Total charges may be higher for students that do not complete on time.

Total charges for the program for students completing on time in **2023**: \$4,167

Total charges may be higher for students that do not complete on time.

Student's Initials: _____ Date: _____

Initial only after you have had sufficient time to read and understand the information.



MAOF

Mexican American Opportunity Foundation

2130 Chester Ave. #200, Bakersfield, CA 93301 | 661-558-0103 | www.maof.org

Mexican American Opportunity Foundation

Empowering Families from Child to Senior

Students at the MAOF Skill Center - Bakersfield are not eligible for federal student loans. This institution does not meet the U.S. Department of Education criteria that would allow its students to participate in federal student aid programs.

MAOF Skill Center - Bakersfield is a contracted training provider for the Workforce Innovations Opportunity Act (WIOA) administered locally by Employer's Training Resource (ETR). The institution does participate in the State of California's Eligible Training Provider List (ETPL) that provides customer-focused employment training resources for adults and dislocated workers. The ETPL program provides their own policies and disclosure to students who qualify under the program. The MAOF Skill Center-Bakersfield accepts **only** WIOA eligible students into its training programs.

The total cost of your training and related fees is fully covered by WIOA if you are determined eligible for training under WIOA rules. This is considered a State of California Financial Aid Program.

Student's Initials: _____ **Date:** _____

Initial only after you have had sufficient time to read and understand the information.

This fact sheet is filed with the Bureau for Private Postsecondary Education. Regardless of any information you may have relating to completion rates, placement rates, starting salaries, or license exam passage rates, this fact sheet contains the information as calculated pursuant to state law.

Any questions a student may have regarding this fact sheet that have not been satisfactorily answered by the institution may be directed to the Bureau for Private Postsecondary Education at 1747 N. Market Blvd, Suite 225, Sacramento, CA 95834, www.bppe.ca.gov, toll-free telephone number (888) 370-7589 or by fax (916) 263-1897.

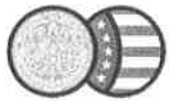
Student Name - Print

Student Signature

Date

School Official

Date



MAOF

Mexican American Opportunity Foundation
Empowering Families from Child to Senior

Mexican American Opportunity Foundation
2130 Chester Ave. #200, Bakersfield, CA 93301 | 661-558-0103 | www.maof.org

Definitions

- “Number of Students Who Began the Program” means the number of students who began a program who were scheduled to complete the program within 100% of the published program length within the reporting calendar year and excludes all students who cancelled during the cancellation period.
- “Students Available for Graduation” is the number of students who began the program minus the number of students who have died, been incarcerated, or been called to active military duty.
- “Number of On-time Graduates” is the number of students who completed the program within 100% of the published program length within the reporting calendar year.
- “On-time Completion Rate” is the number of on-time graduates divided by the number of students available for graduation.
- “150% Graduates” is the number of students who completed the program within 150% of the program length (includes on-time graduates).
- “150% Completion Rate” is the number of students who completed the program in the reported calendar year within 150% of the published program length, including on-time graduates, divided by the number of students available for graduation.
- “Graduates Available for Employment” means the number of graduates minus the number of graduates unavailable for employment.
- “Graduates Unavailable for Employment” means the graduates who, after graduation, die, become incarcerated, are called to active military duty, are international students that leave the United States or do not have a visa allowing employment in the United States, or are continuing their education in an accredited or bureau-approved postsecondary institution.
- “Graduates Employed in the Field” means graduates who beginning within six months after a student completes the applicable educational program are gainfully employed, whose employment has been reported, and for whom the institution has documented verification of employment. For occupations for which the state requires passing an examination, the six months period begins after the announcement of the examination results for the first examination available after a student completes an applicable educational program.
- “Placement Rate Employed in the Field” is calculated by dividing the number of graduates gainfully employed in the field by the number of graduates available for employment.
- “Number of Graduates Taking Exam” is the number of graduates who took the first available exam in the reported calendar year.



MAOF

Mexican American Opportunity Foundation
Empowering Families from Child to Senior

Mexican American Opportunity Foundation
2130 Chester Ave. #200, Bakersfield, CA 93301 | 661-558-0103 | www.maof.org

-
- "First Available Exam Date" is the date for the first available exam after a student completed a program.
 - "Passage Rate" is calculated by dividing the number of graduates who passed the exam by the number of graduates who took the reported licensing exam.
 - "Number Who Passed First Available Exam" is the number of graduates who took and passed the first available licensing exam after completing the program.
 - "Salary" is as reported by graduate or graduate's employer.
 - "No Salary Information Reported" is the number of graduates for whom, after making reasonable attempts, the school was not able to obtain salary information.



MAOF

Mexican American Opportunity Foundation
Empowering Families from Child to Senior

Mexican American Opportunity Foundation
2130 Chester Ave. #200, Bakersfield, CA 93301 | 661-558-0103 | www.maof.org

STUDENT'S RIGHT TO CANCEL

You have the right to cancel your agreement for a program of instruction without any penalty or obligations through attendance at the first-class session or the seventh calendar day after enrollment, whichever is later.

A student may cancel this enrollment agreement by providing a written notice to the Program Coordinator at the MAOF SKILL CENTER – BAKERSFIELD, 2130 Chester Avenue Suite 200, Bakersfield, CA 93301.

I understand I may cancel or withdraw my agreement for enrollment into the program by _____ (Date) without any penalty or obligation.