

ATI COLLEGE

CATALOG

January 1, 2020 – December 31, 2020

Main Campus:

15141 Whittier Blvd., Suite 420, Whittier, CA 90603

Phone Number: (562) 864-0506

Fax Number: (562) 864-7806

Satellite Location:

3407 W. 6th Street, Suite 614, Los Angeles, California 90020

Phone Number: (213) 232-3861

General Email: info@ati.edu

Website: www.ati.edu

Original Publication Date: January 1, 2020

Current Publication Date: September 15, 2020

Academic Year: 2020

Table of Contents

Page #	Topic
4	Accreditation and Approvals
5	Administration Office Hours
5	Admissions Requirements
6	Admissions Procedure
6	Distance Learning
6	International Students Admissions Policy
6	History and Development
6	Mission & Objectives
7	New Student Orientation
7	Statement of Non-Discrimination
7	Academic Calendar
7	Observed Holidays
8	Grievance Procedure
8	Disclosure and Retention of Student Records
8	Notification of Rights Under FERPA for Postsecondary Institutions
10	Facilities
10	Housing
10	Handicapped (Wheelchair Access)
10	Health and Physical Consideration
10	Drug Abuse Prevention Program
11	Career Advising
11	Disclaimer of Employment Guarantee
11	Student Services
11	Attendance and Make-Up Policy
12	Academic Probation
12	Dismissal Policy
12	Class & Practice Hours - Credit Procedure
12	Credit Evaluation & Transfer
13	Notice Concerning Transferability of Credits and Credentials Earned at our Institution
13	Grading System
14	Graduation Requirements
14	Leave of Absence
14	Clock Hour to Credit Hour Conversion Formula
14	Definition of Clock Hours
14	Satisfactory Academic Progress (SAP)
15	Voter Registration
15	California Massage Therapy Council Disclosure Statement
16	Academic Programs
16	Bachelor of Science in Diagnostic Sonography w/Concentration in Healthcare Administration
25	Echocardiography
27	Ultrasound Technology
29	Massage Therapy
31	Business Administrative Assistant
34	Medical Office Administrator
37	Vocational English as a Second Language
40	Tuition & Fees
40	Re-Entry Policy
40	Method of Payments
40	California Cancellation and Refund Policies
42	Academic Transcripts
42	Rules and Policies
46	Other Fees and Charges
47	Administrators

48	Faculty
49	Organization Chart
50	Financial Aid
50	Federal Aid - Consumer Information
50	Financial Aid Mechanism
50	Compliance Statement
50	The U.S. Department of Education Title IV Student Financial Aid Programs
51	Student Eligibility Requirements
51	Application for Aid, Procedures and Forms
52	Determining Need
52	Cost of Attendance
53	Award Concept, Selection of Recipients and Packaging Criteria
53	Definitions related to Financial Aid
55	Recoveries
55	Refunds
55	Transfer Student
56	Verification Process
58	Copyright Infringement Policy
58	Peer-to-Peer File Sharing
58	Business and Professions Code Section 4611
59	Availability of Administrators for Information Dissemination Purposes
60	Establishing, Maintaining, and Safeguarding of ATI College's Information Security Program
61	FORMS

Supplemental Information as of September 15, 2020

Since this catalog's original publication of January 1, 2020, ATI College has made following changes to its **January 2020 – December 2020 Catalog**:

Date Changed	Page(s) on which change appears	Change/Update
02/01/2020	5	Academic Calendar
06/26/2020	4, 15, 33	Program Modification- BS in Diagnostic Sonography w/Concentration in Healthcare Administration
07/07/2020	24, 27, 33	Book List
07/22/2020	6, 8	Disclosure and Retention of Student Records (FERPA), Housing
07/23/2020	15, 24, 26, 30	Total charges for a period of attendance
08/03/2020	25, 27, 41	Book charges, Administrators
08/07/2020	41	Administrator
09/15/2020	40	Tuition Information
12/02/2020	4	Program List - updates

As a prospective student, you are encouraged to review this catalog prior to signing an enrollment agreement. You are also encouraged to review the School Performance Fact Sheet, which must be provided to you prior to signing an enrollment agreement. All classes shall be held at 15141 Whittier Blvd., Suite 420, Whittier, CA 90703 and/or 3407 W. 6th St., Suite 614, Los Angeles, CA 90020.

Accreditation and Approvals

ATI College is accredited by the Accrediting Commission of Career Schools and Colleges (ACCSC) to award: Bachelor of Science in Diagnostic Sonography with Concentration in Healthcare Administration (BS), Echocardiography (Certificate), Ultrasound Technology (Certificate), Massage Therapy (Certificate), and Medical Office Administrator (Certificate) via on-ground or blended (a combination of distance education and on-ground). ACCSC is listed as a nationally recognized accrediting agency by the U.S. Department of Education. This accreditation qualifies ATI to participate in several Federal Financial Aid Programs, which provide grants and loans to those eligible students.

ATI College is a private institution approved to operate by the California Bureau for Private Postsecondary Education. Approval to operate means the institution is compliance with the minimum standards contained in the California Private Postsecondary Education Act of 2009 (as amended) and Division 7.5 of Title 5 of the California Code of Regulations. The Bureau can be reached at P.O. Box 980818, West Sacramento, CA 95798-0818 or 1747 North Market, Suite 225, Sacramento, California 95834; www.bppe.ca.gov; Phone 916-431-6959; Toll Free Phone 888-370-7589; Fax 916-263-1897.

ATI College is authorized under federal law (U.S. Immigration and Customs Enforcement, Student and Exchange Visitor Program: SEVP MS 5600, DHS/ICE - 500 12th Street, SW, Washington, D.C. 20598-5600) to admin non-immigrant alien students.

ATI College is approved to participate in student financial assistance programs authorized by Title IV of the Higher Education Act of 1965 by the U.S. Department of Education (400 Maryland Avenue, S.W. Washington, DC 20202-5140).

ATI College does not have a pending petition in bankruptcy, is not operating as a debtor in possession, has not filed a petition within the preceding five years, and has not had a petition in bankruptcy filed against it within the preceding five years that resulted in reorganization under Chapter 11 of the United States Bankruptcy Code (11 U.S.C. Sec. 1101 et seq.).

The following programs are currently offered by the College:

Standard Occupational Classification (SOC)Code	Program	Credential	Semester Credit Hours	Months	Learning Method & Location
29-2032 29-2071	Bachelor of Science in Diagnostic Sonography with Concentration in Healthcare Administration	Bachelor's Degree	120	30	On-ground (Whittier or Los Angeles)
29-2031	Echocardiography	Certificate	82	18	On-ground & Online
29-2032	Ultrasound Technology	Certificate	81.5	18	On-ground & Online
N/A	Vocational English Courses*	Certificate	32.5	12	On-ground (Whittier or Los Angeles)

On-ground courses are available at:
Main Campus (Whittier)
15141 Whittier Boulevard, Suite 420, Whittier, CA 90603
&
Satellite Location (Los Angeles)
3407 West 6th Street, Suite 614, Los Angeles, CA 90020

Distance education coursework is completed at a location determined by the student. ATI College's academic programs are specifically designed to align with the College's mission and objectives, which is to improve peoples' lives by providing professional work-skill training. Students seeking to succeed as professionals and instructors seeking to teach such students to require a learning environment committed to high standards of instruction. ATI College seeks to respond to these needs and challenges by teaching our students:

- 1) to develop a high-level of knowledge in their chosen field of career,
- 2) to develop analytical and critical thinking skills,
- 3) to help understand the significance of self-discipline thus acquiring self-confidence,
- 4) to develop a professional attitude and,
- 5) the ability to meet the employer's expectations in the world of professionalism.

Administration Office Hours

Administration office hours are as follow:

Monday	Tuesday	Wednesday	Thursday	Friday	Saturday	Sunday
8AM-7PM	8AM-7PM	8AM-7PM	8AM-7PM	8AM-5PM	CLOSED	CLOSED

Admission Requirements

Admission requirements to the College and to the individual programs include:

1. An initial interview with the ATI Admissions Advisor.
2. For ATI's Certificate/Diploma and the Bachelor of Science degree in Diagnostic Sonography with Concentration in Healthcare Administrator program, proof of graduation from an accredited high school or its equivalent that must be demonstrated by one of the following criteria:
 - a. Copy or original of applicant's high school transcript indicating that the applicant fulfilled the requirements for graduation from an accredited high school.
 - b. Copy or original of applicant's recognized equivalency certificate, such as the General Equivalency Diploma (GED), or copy or original of the GED transcript showing fulfillment of the requirements for a GED.
 - c. Copy of applicant's valid high school diploma.

3. Pass the Wonderlic Basic Skills Test (BST) both the Quantitative & Verbal.

Level of Program	Required Score	
	Quantitative	Verbal
Certificate/Diploma Programs	210	200
Bachelor's Degree Program	280	240

4. For ATI's Distance Education courses, pass the online readiness "Computer Literacy and Internet Knowledge (CLIK)" pre-assessment test.
5. A completed ATI Enrollment Agreement.
6. Acceptance interview conducted by a designated school official.
7. For ATI's Distance Education courses, meet minimum technology specifications. All laptops must have, at minimum, the following features: Web cam, microphone, sound card with speakers, consistent and reliable wireless internet access and Microsoft Office or equivalent.
 - PC Computer: Microsoft account, Windows 10, 1.6 GHz, 2-core processor, 4 GB, 2 GB (32bit) RAM, 4 GB available disk space, 1280× 768 screen resolution.
 - Mac Computer: Microsoft account, Intel processor, 4 GB RAM, 10 GB available disk space, Mac OS Extended or APFS, 1280 × 800 screen resolution.
8. Each candidate for admission is evaluated on the basis of individual merit and potential and will be considered without regard to race, color, religion, national origin, sex, age, or disability.
9. ATI College does not admit ability-to-benefit students.

Admissions Procedure

Following acceptance, each applicant is required to submit a registration fee plus a cost of the first set of textbooks which sums up to a total amount of \$240 at the time of signing of the Enrollment Agreement. Payment of the registration fee of \$75 may be waived in case of extenuating circumstances. The signed and accepted Enrollment Agreement for admission details the obligations of the student and the College during the student's period of attendance.

Distance Learning

ATI College offers certain courses via distance learning using an online format. The Whittier campus & Los Angeles Satellite location are approved by ACCSC to offer distance education for the programs noted in this Catalog.

Prior to acceptance and signing an enrollment agreement to take classes via distance education, all applicants applying to an online/on-ground program must take and pass the “Computer Literacy and Internet Knowledge (CLIK)” pre-assessment test, an online readiness assessment from Criteria Corp that measures basic computer literacy.

In addition, students must complete a Distance Learning Orientation and confirm that they have access to technology that will enable them to complete their coursework.

International Students Admissions Policy

ATI College is authorized under federal law to admit non-immigrant alien students. Visa services are not provided. All international applicants to ATI College must meet the same admissions standards as all other students. Additionally, those international students demonstrating competence in the English language by one of the following standards, may not be required to take the Vocational English as a Secondary Language (ESL)* program at this institution: 1) graduation from a secondary or a postsecondary institution whose primary language of instruction was English, 2) proof of successful completion of a minimum of six months (two quarters) of postsecondary coursework at an accredited institution in which English was the language of instruction. All instructions at ATI College will be conducted in English.

History and Development

ATI College is a private postsecondary vocational college system focused in technology-oriented programs. Main campus began its operation in January 1998 in the City of Norwalk then soon opened ATI branch campus in Tustin California in February 2004.

In August 2008, ATI branch campus moved its location to 1125 E. 17th Street Suite N251 in Santa Ana City to better accommodate the growing student population. College continues to offer varieties of career-focused vocational programs to adult learners in Los Angeles and Orange Counties.

In June 2013, ATI branch campus was consolidated with the main school at 12440 Firestone Boulevard Suite 2001 in city of Norwalk. In addition, in October 2013, the ownership of ATI College was changed to Southern California University, School of Oriental Medicine and Acupuncture of Los Angeles California.

In July 2015, ATI College Los Angeles Satellite Location began its operation in downtown Los Angeles at 3460 Wilshire Boulevard.

In December 2017, ownership of ATI College was changed to Dr. Katherine Cho and the College continues to offer career-focused vocational programs to adult learners in Los Angeles and Orange Counties.

In December 2018, ATI College Satellite Location changed its address to 3407 W. Sixth Street, Suite 614 in Los Angeles California.

In September 2019, ATI College Main Campus relocated to 15141 Whittier Blvd., Suite 420 in Whittier California.

In March 2020, ATI College began offering courses online due to the COVID-19 pandemic.

Mission & Objectives

It is ATI's mission to improve peoples' lives by providing professional work-skill training. Students seeking to succeed as professionals and instructors seeking to teach such students to require a learning environment committed to high standards of instruction. ATI College seeks to respond to these needs and challenges by teaching our students:

- 1) to develop a high-level of knowledge in their chosen field of career,
- 2) to develop analytical and critical thinking skills,
- 3) to help understand the significance of self-discipline thus acquiring self-confidence,
- 4) to develop a professional attitude and,
- 5) the ability to meet the employer's expectations in the world of professionalism.

New Student Orientation

New students are required to attend the New Student Orientation prior to the first day of class.

Statement of Non-Discrimination

ATI College does not discriminate on the basis of race, color, religion, sex, handicap, financial status, age, area of origin or residence in its admissions, staffing, instruction, and/or graduation policies.

Academic Calendar

Academic Calendar for Certificate Programs	
FULL-TIME 8:30AM-3PM M-F	PART-TIME 5:30PM-10:30PM M-TH
01/02/2020	02/10/2020
02/10/2020	04/13/2020
03/23/2020	06/15/2020
05/04/2020	08/17/2020
06/15/2020	10/19/2020
07/27/2020	12/21/2020
09/07/2020	
10/19/2020	
11/30/2020	

Academic Calendar for Bachelor's Degree Program								
FALL SEMESTER (15 weeks)			SPRING SEMESTER (15 weeks)			SUMMER SEMESTER (15 weeks)		
FALL	2020	2021	SPRING	2020	2021	SUMMER	2020	2021
Class Begin	Aug 31	Aug 30	Class Begin	Jan 06	Jan 04	Class Begin	May 04	May 03
Registration Ends	July 31	July 30	Registration Ends	Dec 06, 2019	Dec 04, 2020	Registration Ends	Apr 03	Apr 02
Labor Day	Sept 07	Sept 06	Martin Luther King, Jr.	Jan 20	Jan 18	Late Registration & Drop/Add	May 15	May 14
Late Registration & Drop/Add Ends	Sept 11	Sept 10	Late Registration & Drop/Add Ends	Jan 17	Jan 15	Memorial Day	May 25	May 31
Veterans Day	Nov 11	Nov 11	President's Day	Feb 17	Feb 15	Independence Day	July 03	July 05
Thanksgiving	Nov 26&27	Nov 25&26	Last Day of Class	Apr 17	Apr 16	Last Day of Class	Aug 13	Aug 13
Last Day of Class	Dec 11	Dec 10						

The school reserves the right to cancel a class and or change the start date due to insufficient enrollment. If this occurs, the student may apply all monies paid to the next scheduled class start date or request a refund (except registration fee).

Observed Holidays

Closure of campuses on following holidays:

- ❖ New Year's Eve & Day (Dec/Jan)
- ❖ Birthday of Martin Luther King, Jr. (Jan)
- ❖ President's Day (Feb)
- ❖ Memorial Day (May)
- ❖ Independence Day (July)
- ❖ Labor Day (Sept)
- ❖ Veterans Day (Nov)
- ❖ Thanksgiving Day & Friday after Thanksgiving (Nov)
- ❖ Christmas Eve & Day (Dec)

Grievance Procedure

In the event, a student has a grievance, which cannot be resolved to his/her satisfaction with the student's immediate instructor; the student is to make his/her grievance known to the Institution's Director or in his/her absence to the Administrative Assistant, at 15141 Whittier Blvd., Suite 420, Whittier, CA 90603 (Tel. 562-864-0506). It is strongly recommended that all grievances be presented in writing. Student Services Department will also accept oral grievances. However, if the issue still is unresolved, a student or any member of the public may file a complaint with the Bureau for Private Postsecondary Education by calling (888) 370-7589 toll-free or by completing a complaint form, which can be obtained on the bureau's internet web site www.bppe.ca.gov.

Any questions a student or any member of the public may have regarding this catalog that have not been satisfactorily answered by the institution may be directed to the Bureau for Private Postsecondary Education at 1747 N. Market Blvd., Suite 225, Sacramento, CA 95834; PO Box 980818, West Sacramento, CA 95798-0818; www.bppe.ca.gov; Tel. (888) 370-7589 or (916) 574-8900; Fax. (916) 263-1897.

Schools accredited by the Accrediting Commission of Career schools and Colleges must have a procedure and operational plan for handling student complaints. If a student does not feel that the school has adequately addressed a complaint or concern, the student may consider contacting the Accrediting Commission. All complaints considered by the Commission must be in written form, with permission from the complaint(s) for the Commission to forward a copy of the complaint to the school for a response. The complainant(s) will be kept informed as to the status of the complaint as well as the final resolution by the Commission. Student may direct all inquiries to:

Accrediting Commission of Career Schools and Colleges
2101 Wilson Boulevard, Suite 302
Arlington, VA 22201
Website: www.accsc.org
Telephone: (703) 247-4212

A copy of the Commission's complaint form is available at the school and may be obtained by contacting the admissions department at (562)864-0506.

Disclosure and Retention of Student Records (FERPA)

Adult students, parents of minor students, and parents of tax dependent students, have the right to inspect, review, and challenge information contained in the institution's student records. However, a staff member must be present during the process to provide clarification and/or answers to related questions raised during the review of the student's file. Educational records are defined as files, materials, and documents that contain information directly related to the student's period of enrollment that are maintained by the institution. ATI College will keep these records for five (5) years from the last day of attendance. After this period, all records, except academic transcript, may be destroyed. Academic transcripts are maintained by the institution permanently. The students are not entitled to inspect the financial records of their parents. Written consent from the student and/or parents is required before educational records may be disclosed to any party with the exception of accrediting commission or governmental agencies so authorized by law. The complete and accurate records of all of the following information shall be available: (a) The educational programs offered by the institution and the curriculum for each; (b) The names and addresses of the members of the institution's faculty and records of the educational qualifications of each member of the faculty; (c) Any other records required to be maintained by this chapter, including, but not limited to, records maintained pursuant to Article 16 (commencing with Section 94928).

Notification of Rights under FERPA for Postsecondary Institutions

The Family Educational Rights and Privacy Act (FERPA) affords eligible students certain rights with respect to their education records. (An "eligible student" under FERPA is a student who is 18 years of age or older or who attends a postsecondary institution.) These rights include:

1. The right to inspect and review the student's education records within 45 days after the day ATI College receives a request for access. A student should submit to the registrar, dean, head of the academic department, or other appropriate official, a written request that identifies the record(s) the student wishes to inspect. The school official will make arrangements for access and notify the student of the time and place where the records may be inspected. If the records are not maintained by the school official to whom the request was submitted, that official shall advise the student of the correct official to whom the request should be addressed.
2. The right to request the amendment of the student's education records that the student believes are inaccurate, misleading, or otherwise in violation of the student's privacy rights under FERPA. A student who wishes to ask the school to amend a record should write the school official responsible for the record, clearly identify the part of the record the student wants changed, and specify why it should be changed. If the school decides not to amend the record as requested, the school will notify the student in writing of the decision and the student's right to a hearing regarding the request for amendment. Additional information regarding the hearing procedures will be provided to the student when notified of the right to a hearing.

3. The right to provide written consent before the university discloses personally identifiable information (PII) from the student's education records, except to the extent that FERPA authorizes disclosure without consent. The school discloses education records without a student's prior written consent under the FERPA exception for disclosure to school officials with legitimate educational interests. A school official is a person employed by ATI College in an administrative, supervisory, academic, research, or support staff position (including law enforcement unit personnel and health staff); a person serving on the board of trustees; or a student serving on an official committee, such as a disciplinary or grievance committee. A school official also may include a volunteer or contractor outside of ATI College who performs an institutional service of function for which the school would otherwise use its own employees and who is under the direct control of the school with respect to the use and maintenance of PII from education records, such as an attorney, auditor, or collection agent or a student volunteering to assist another school official in performing his or her tasks. A school official has a legitimate educational interest if the official needs to review an education record in order to fulfill his or her professional responsibilities ATI College.
4. The right to file a complaint with the U.S. Department of Education concerning alleged failures by ATI College to comply with the requirements of FERPA. The name and address of the Office that administers FERPA is:
 - Family Policy Compliance Office
 - U.S. Department of Education
 - 400 Maryland Avenue, SW Washington, DC
 - 20202

FERPA permits the disclosure of PII from students' education records, without consent of the student, if the disclosure meets certain conditions found in §99.31 of the FERPA regulations. Except for disclosures to school officials, disclosures related to some judicial orders or lawfully issued subpoenas, disclosures of directory information, and disclosures to the student, §99.32 of FERPA regulations requires the institution to record the disclosure. Eligible students have a right to inspect and review the record of disclosures. A postsecondary institution may disclose PII from the education records without obtaining prior written consent of the student-

- To other school officials, including teachers, within ATI College whom the school has determined to have legitimate educational interests. This includes contractors, consultants, volunteers, or other parties to whom the school has outsourced institutional services or functions, provided that the conditions listed in §99.31(a)(1)(i)(B)(J)-(a)(1)(i)(B)(2) are met. (§99.31(a)(1)) the student's enrollment or transfer, subject to the requirements of §99.34. (§99.31(a)(2))
- To authorized representatives of the U.S. Comptroller General, the U.S.
- Attorney General, the U.S. Secretary of Education, or State and local educational authorities, such as a State postsecondary authority that is responsible for supervising the university's State-supported education programs. Disclosures under this provision may be made, subject to the requirements of §99.35, in connection with an audit or evaluation of Federal- or State-supported education programs, or for the enforcement of or compliance with Federal legal requirements that relate to those programs. These entities may make further disclosures of PII to outside entities that are designated by them as their authorized representatives to conduct any audit, evaluation, or enforcement or compliance activity on their behalf. (§§99.31(a)(3) and 99.35)
- In connection with financial aid for which the student has applied or which the student has received, if the information is necessary to determine eligibility for the aid, determine the amount of the aid, determine the conditions of the aid, or enforce the terms and conditions of the aid. (§99.31(a)(4))
- To organizations conducting studies for, or on behalf of, the school, in order to: (a) develop, validate, or administer predictive tests; (b) administer student aid programs; or (c) improve instruction. (§99.31(a)(6))
- To accrediting organizations to carry out their accrediting functions. (§99.31(a)(7))
- To parents of an eligible student if the student is a dependent for IRS tax purposes. (§99.31(a)(8))
- To comply with a judicial order or lawfully issued subpoena. (§99.31(a)(9))
- To appropriate officials in connection with a health or safety emergency, subject to §99.36. (§99.31(a)(10))
- Information the school has designated as "directory information" under §99.37. (§99.31(a)(11))
- To a victim of an alleged perpetrator of a crime of violence or a non-forcible sex offense, subject to the requirements of §99.39. The disclosure may only include the final results of the disciplinary proceeding with respect to that alleged crime or offense, regardless of the finding. (§99.31(a)(13))
- To the general public, the final results of a disciplinary proceeding, subject to the requirements of §99.39, if the school determines the student is an alleged perpetrator of a crime of violence or non-forcible sex offense and the student has committed a violation of the school's rules or policies with respect to the allegation made against him or her. (§99.31(a)(14))
- To parents of a student regarding the student's violation of any Federal, State, or local law, or of any rule or policy of the school, governing the use or possession of alcohol or a controlled substance if the school determines the student committed a disciplinary violation and the student is under the age of 21. (§99.31(a)(15))

Facilities

The ATI main campus is located at 15141 Whittier Blvd., Suite 420, Whittier, CA 90603. Conveniently located at the corner of Whittier Blvd. and Colima Road, Whittier campus has easy access to public transportation with the facility equipped with laboratories, general-purpose classrooms, student lounge and administrative offices all which are well lighted and air-conditioned. Computer stations are equipped with Pentium IV PCs for instructors and students to complete their online researches and assignments. Approximated total square footage of Whittier facility is 6,000. Imaging laboratory is equipped with 2D ultrasound systems and medical supplies to support the students learning experiences. The school library/resource center is equipped with current collection of manuals, reference books and periodicals designed to support all course offerings. Library is open Monday to Friday, 8 am to 8 pm and is closed on weekends and holidays.

ATI College Los Angeles Satellite campus is located at 3407 W. Sixth Street, Suite 614 in Los Angeles, California. Approximated square footage of Satellite campus is 2,000 which houses general office and classrooms/laboratory to service the students from Los Angeles. Facility is conveniently located near the freeways and public transportation system and is equipped with ample parking spaces for students and visitors. All rooms are well lighted and air-conditioned. Imaging laboratory is equipped with medical supplies to support the students learning experience. Laboratory at this location are equipped with 2-D ultrasound systems along with printers and recording devices. Office hour for the Satellite campus is 9 am to 6 pm, Monday to Friday. Campus is closed on weekends and holidays.

Housing

ATI College doesn't have dormitory facilities under its control and carries no responsibility to find or assist students in finding housing. For the availability of housing located reasonably near the College's facilities may be found at www.realtor.com, www.apartments.com, & www.zillow.com. An estimation of the approximate cost or range of cost of the housing are as follows:

- Near Whittier Main Campus:

# of Bedroom	Range of Cost
1	\$1100/month - \$1600/month
2	\$1700/month - \$2300/month

- Near Los Angeles Satellite Location:

# of Bedroom	Range of Cost
1	\$920/month - \$1800/month
2	\$1400/month - \$2600/month

Handicapped (Wheelchair Access)

College campus is accessible to all people, including those with disabilities.

Health and Physical Consideration

Generally, the professional in the Allied Health field must be in good physical health since he/she will be working in direct contact with patients. This related field of study requires a great deal of standing, walking, pushing, bending and stretching for extended periods of time. A person must consider his/her physical limitations in terms of making a career choice that involves extensive physical demands. We promote the acceptance of students with physical limitations or disabilities if these students (their parents or physician) believe they can fulfill the training demands.

Drug Abuse Prevention Program

The college strictly enforces a zero tolerance drug and alcohol policy on campus and makes the following information available to its students, staff, and instructors. Any individual associated with ATI College who is seeking information, counseling, or assistance concerning Drug Abuse Prevention may call or visit the following agency:

Agency	Telephone Number	Office Address
Ness Counseling Center	(562) 776-9495	8347 Eastern Ave, Bell Gardens, CA
Compton Special Svc Center	(310) 605-5693	404 N Alameda St, Compton, CA
Family Restoration Alcohol	(562) 644-5730	11816 Pennsylvania Ave, South Gate, CA
LA Centers for Alcohol & Drug	(562) 906-2676	11015 Bloomfield Ave, Santa Fe Springs, CA
Mela Counseling Svc Center Inc	(323) 721-6855	5723 Whittier Blvd, Los Angeles, CA
Drug & Alcoholism Treatment	(562) 570-4440	1133 E Rhea St, Long Beach, CA
Atlantic Recovery Services	(562) 436-3533	644 W 5th St, Long Beach, CA
Whittier Counseling Center	(562) 236-2090	7348 Painter Ave, Whittier, CA

Aegis Medical Systems Inc

(562) 946-1587

14240 Imperial Hwy, La Mirada, CA

Career Advising

Career advisor is on-campus to offer assistance and advice to students individually as often as necessary. Advising takes place in monitoring the student progress as scheduled for the period of enrollment. Career advisor assess students' needs, communicate with potential employers, and assist students with job interview techniques and offer workshops.

Disclaimer of Employment Guarantee

ATI College does not guarantee employment to any student. However, limited job placement assistance is provided to graduates at no additional charge. Upon graduation, the student's name is recorded in a placement register for the follow-up process. Placement assistance is providing by reviewing the listings of prospective employers seeking employees, their job requirements, salary, and other pertinent information. Students are referred to interviews and the results of these interviews are recorded in the placement register. The school may show prospective students this register upon request.

Student Services

Tutoring: Individuals who have occasional difficulty with the study are urged to seek assistance from their instructor. Tutoring is available outside of normal class time and should be arranged in advance. Contact the student service department at the school via email or telephone or in-person for more information. Students may also arrange tutoring meetings directly with their instructor.

Guidance: College provides guidance services for students depending on their individual needs. Assistance in program selection and career planning is available at the student service department. Students encountering a problem that interferes with their education are encouraged to bring these problems to the attention of their instructor or the student service advisor. The College recognizes the existence of external factors, which may interfere with the study, such as physical or substance abuse. For those students trying to deal with substance problems, the student service advisor is available for advising. The College also offers referral services through local agencies. The key element is that the students must take the initiative to ask for assistance. Student service advisor can be reached via telephone, email, or in-person.

Career Advising: Career advisor is on-campus to offer assistance and advice to students individually as often as necessary. Advising takes place in monitoring the student progress as scheduled for the period of enrollment. Career advisor assess students' needs, communicate with potential employers, and assist students with job interview techniques and offers workshops. Career advisor can be reached via telephone, email, or in-person.

Other Services Available: Student services personnel are on-campus to provide student advising services, including but not limited to facilitate responses to student needs through student evaluations; facilitate responses to student complaints; facilitate student transfer requests; facilitate student repeat requests; facilitate student leave of absence (LOA) requests; facilitate student transcript requests; facilitate student completion certificate requests; facilitate student verification of enrollment (VOE) requests; facilitate student information update requests. Requests should be sent via email, deliver in-person, or by mail using the US Postal Service. Services are available for those currently enrolled and graduates from the programs offered via on-ground and online.

Attendance and Make-Up Policy

Students are required to attend classes and lab sessions which are scheduled by the college. A notice is sent if student's attendance should drop below the norm. Excessive absences will be considered grounds for dismissal. Excessive absence is defined as missing 30 percent or more of the cumulative hours scheduled to date within a given module/course of study. Note: Student is considered "withdrawn" with 14 consecutive absences (using the calendar days which includes the weekends and holidays) and a notice is sent to the student informing the student status as "withdrawn". If a student's last date of attendance is on a Friday, the 14 days of consecutive absences will be counted beginning the next school day. If the 14th day of consecutive absence falls on a weekend or holiday, the student will be dismissed on the following school day; if the student returns on the following school day, student will not be considered "withdrawn." Please refer to "Satisfactory Academic Progress (SAP)" policy in this catalog for additional information. Student is expected to complete the course of study within the 1.5 times of the period of time stated in the enrollment agreement. An absence may be excused by calling-in the same day prior to the beginning of class. Students are required to make-up for the lessons, and exams missed due to absenteeism. The instructor and Student Services Advisor in charge will review excessive tardiness or absences with the student to determine possible corrective action to the issue on hand.

Course & Midterms/Final Exam Make-Up

To make up class work and/or examinations, student must:

1. Have "unforeseen, but fully justifiable" reason(s) and must provide a written explanation.
2. Bring all relevant information for student services manager and instructors to review.

3. Agree to the terms for how and when the make-up will take place. ALL MAKEUP HOURS & WORK MUST BE COMPLETED ON CAMPUS.

Course & Midterms/Final Exam Make-Up Procedure

- Student must submit a written request to make-up missed hours along with supporting documentation (i.e. doctor's note, court documents, military documents, childcare documents, etc.) to student service personnel. Requests without supporting documentation will be determined by the student services personnel to be eligible/ineligible for make-up on an individual basis. You must submit a request as soon as returning from the absence. Explanation must clearly justify his/her absence; one note for each absence would be ideal.
- Student services reviews the explanation to determine make-up eligibility.
- If determined eligible to make-up hours missed, Make-up Form is prepared by the student services personnel with an appropriate number of clock hours needed along with a make-up due date. If determined ineligible to make-up missed class hours, student is notified in writing explaining the reasons for request denial. Student is further instructed to "retake/repeat" the course to meet satisfaction.
- Upon completion, total hours made-up along with the Make-up Form and note must be submitted to student services personnel for evaluation. If the make-up is not done on campus as instructed, the hours will not be honored.
- If form is determined to be completed, form is given to the registrar for her to enter earned hours into school system.
- Registrar notified FAO and Accountant the make-up hours.

Make-up Form is kept in the student file for the duration of five years. The student should also keep the copy of the completion for at least three modules.

Academic Probation

ATI College reserves the right to apply academic probation policy to any student who's academic, attendance, and/or conduct standing does not meet the school's satisfactory standards. Students on academic probation for the total length of the module following the probation announcement must satisfy the problem condition(s) prior to the starting of the subsequent module. The instructor and school director will determine if problem conditions have been satisfied before student is allowed to start subsequent module/course. Student is placed on academic probation if school academic requirements are not satisfied.

Dismissal Policy

College reserves the right to dismiss any students where academic, attendance, conduct standing, and/or financial obligations does not meet the school's satisfactory standards. Students who have been dismissed may be reinstated only upon approval of the school director after satisfying the requirements. All dismissals are determined on individual basis.

Class & Practice Hours - Credit Procedure

Full-time students at ATI College record their attendance by clocking IN their names at the start of the day, OUT for a lunch period, IN when returning to class and OUT at the end of the class day. Part-time students at ATI College record their attendance by clocking IN their names at the start of the day and OUT at the end of the class day. Students receive credit for task/operation/project completed after each action is verified by an instructor or office administrator.

Credit Evaluation & Transfer

ATI College has not entered into an articulation or transfer agreement with any other college or university. ATI College does not award credit for prior experiential learning. Credit for courses taken at an accredited postsecondary institution may be accepted at ATI College if the following conditions are met:

1. An official transcript, or transcripts, accompanies the request which must be made prior to matriculation at the school.
2. All credits requested have been completed prior to matriculation. There is no accommodation for concurrent enrollment.
3. Students with degrees from international colleges and universities must submit an official translation of the transcript along with the request to transfer credits.
 - (a) Requests must be received prior to matriculation.
 - (b) Credits may be granted on a course-by-course basis.
4. Students who have earned some postsecondary credits yet did not complete an academic associate's or bachelor's degree, may request transfer credit by submitting an official transcript along with the request. Credit may be granted on a course-by-course basis if:
 - (a) Credit is applied for prior to matriculation.
 - (b) Grades earned are "C" (2.0) or higher.
 - (c) Courses fit into the appropriate equivalent categories/courses by ATI College at the time of application.
5. If the student has a technical degree or has earned some credits from a technical postsecondary institution, credit may be granted on a course-by-course basis if:

- (a) Credit is applied for prior to matriculation.
- (b) Grades earned are “C” (2.0) or higher.

I. The Process for Evaluation of Transfer Credit

Transfer credit must meet the expectations of the faculty and directors and must be appropriate to the program sought. Academic credit earned within ten (10) years prior to admission will be reviewed as to applicability to the present course of study. The Admissions reserves the right to require examinations or other proof of competence regardless of transfer credits listed on the student’s records. It is not the policy of ATI College to impose redundant programs or requirements on any student. All transfer credits must be reviewed prior to the student’s matriculation. Credits will not be accepted after the student has enrolled at the school. As much as fifty percent (50%) of the credits required for graduation from ATI College may be satisfied through transfer credit

II. The Process for Establishing Equivalency of Transfer Credit

Transfer credit is accepted from postsecondary institutions authorized by appropriate legal authorities. Corporate or specialized training programs may be recognized as transfer credits as recommended by generally accepted national educational standards. Not all prior credit is applicable to credits earned at ATI College. Transfer credit must support the program. The designated Academic Affairs staff member will evaluate all transcripts and requests for credit to determine transfer credit acceptable to the school as meeting partial requirements for the program.

III. Administrative Position Responsible for Transfer Evaluation

The Program Director is the administrator ultimately responsible for the transfer evaluation, though the Program Director may delegate individual evaluations to faculty members or academic staff.

Notice Concerning Transferability of Credits and Credentials Earned at Our Institution

The transferability of credits you earn at ATI College is at the complete discretion of an institution to which you may seek to transfer. Acceptance of the completion certificate you earn in the program of study is also at the complete discretion of the institution to which you may seek to transfer. If the completion certificate that you earn at this institution is not accepted at the institution to which you seek to transfer, you may be required to repeat some or all of your coursework at that institution. For these reasons you should make certain that your attendance at this institution will meet your educational goals. This may include contacting an institution to which you may seek to transfer after attending ATI College to determine if your completion certificate will transfer.

Grading System

Students are evaluated on a regular basis on subject matters. The evaluations are measured on a standard percentile basis and the percentage converted to a letter grade and a point grade. The evaluation form reflects the overall attendance and academic progress of the student. Students must maintain a “C” (70%) average to maintain satisfactory academic status. The grading system detailed below is the system utilized in the school.

<u>Grading</u>	<u>Letter</u>	<u>Description</u>	<u>Grade point</u>
90 -100%	A	Excellent	4.00
80% - 89%	B	Above average	3.00
70%- 79%	C	Average	2.00
60% - 69%	D	Below average	1.00
59% or below	F	Fail	0.00

Graduation Requirements

When a student has completed the graduation requirements of the course of study with a GPA (Grade Point Average) of “C” (70%) or better, the student receives a program completion certificate or appropriate degree which confirms completion of the appropriate program of study.

The school assists the students in completing the necessary documents to file for the appropriate credential examination if any.

Students of Vocational English will be issued a Certificate of Completion of Courses upon successful completion of all of the courses.

Leave of Absence

Occasionally, students may experience extended personal, medical or other problems, which make it difficult to attend classes. The institution may allow a student under such circumstances to take a Leave of Absence (LOA) from the program. LOA must be requested in writing by the student and must be approved by the student service personnel. Written request must include the start and end date of the leave of absence. Leaves of Absence may be granted for up to 180 days. Do not request a Leave of Absence unless you absolutely need to be off school for a period of more than 14 days but less than 180 days. Students will not be assessed additional tuition charges while on Leave of Absence. Students returning from LOA will not retain credit for clock hours and work projects finished in that specific module/course within the LOA duration. Students who fail to return from a LOA will be considered dismissed as of the last day of attendance.

Clock Hour to Credit Hour Conversion Formula

ATI College measures student progress in semester credit hours. The definition of a semester credit hour is as follows:

One semester credit hour equals 45 units comprised of the following academic activities:

- One clock hour in a didactic learning environment = 2 units
- One clock hour in a supervised laboratory setting of instruction = 1.5 units
- One hour of externship = 1 unit
- One hour of out-of-class work and/or preparation for the didactic learning environment or supervised laboratory setting of instruction that are designed to measure the student's achieved competency relative to the required subject matter objectives equals 0.5 unit

Definition of Clock Hours

School's definition of clock hour is as follow: 50 minutes duration in classroom lecture, lab/shop hours, independent study activity, or externship hours.

Satisfactory Academic Progress (SAP)

STANDARDS: This institution expects all of its regular students to maintain **Satisfactory Academic Progress (SAP)** as established by this institution under the guidelines of the, institution's accrediting body the student must:

1. Maintain a cumulative academic average of "C" (70%) or better at the end of each of the evaluation period. The grading must take into consideration grades obtained in exams for theory classes and practical grades obtained on hands on practical exams.
2. Maintain a cumulative average attendance level of at least two-thirds (2/3) of the scheduled hours indicated on their enrollment contract at the end of each of the evaluation period.
3. Complete the course within a maximum time frame of one and one-half (1 ½) times the length of the course as stated in the enrollment agreement. For example, if the student has contracted to complete the course within 44 weeks (including grace time for absences), he or she must complete within 66 weeks.
4. Students meeting the minimum requirements for attendance and academic progress at any evaluation point will be considered to be making satisfactory progress until the next evaluation.

EVALUATION PERIODS: Student receiving aid from Title IV Aid Programs must be in compliance with the Satisfactory Academic Progress Policy at the end of each payment period or term of the course.

If at the end of a payment period the student fails to maintain a passing grade point average or failed to successfully complete the clock hours, semester/trimester or quarter credit hours percentage required to maintain a progress level that would allow the student to complete the course within the maximum time frame in the course, as published, the student would be placed in a financial aid warning SAP status. The student will be eligible for financial aid funds for one subsequent payment period.

If at the end of a payment period following the period under financial aid warning status, the student fails to make the grade or fails to successfully complete the cumulative number of hours percentage that would allow the student to complete the course of study within the maximum time frame as published, the student will be placed in an ineligible status for financial aid funds. At this point the student will be informed by the institution of his/her ineligibility for future financial aid funds. The student will also be informed of the steps to take to initiate an appeal process.

APPEAL PROCEDURES: The student, who wishes to appeal the non-satisfactory progress status, must initiate the process by submitting a written request to the director of the institution. The request is to be presented within (10) days of the non-satisfactory progress status determination and must describe any circumstances that the student believes affected his/her performance and deserve special consideration and the measures that the student has taken to resolve those circumstance in a manner that would not interfere his/her progress again.

The director shall evaluate the appeal within five (5) business days and notify the student in writing of his/her decision. The decision of the director shall be final.

If the appeal is approved, the payment period originally placed under eligibility status would be modified to a financial aid probation status. The student will be eligible for aid for the period under financial aid probation.

If at the end of the payment period under probation status, the student fails to make the grade or fails to successfully complete the cumulative number of hours (clock, semester/trimester or quarter) percentage that would allow the student to complete the course of study within the maximum time frame as published, the student will be placed in an ineligible for financial aid funds status.

REINSTATEMENT: A student that prevails upon the appeal process will be determined as making satisfactory progress. Financial aid eligibility for funds will be reinstated to the student only for that payment period under the probation status.

RE-ENTERING: Students accepted for re-entering into the program of study, will be placed under the same satisfactory progress status prevailing at the time of the prior withdrawal.

Voter Registration

In order to vote in a California election, you must complete a Voter Registration Form. To register to vote in California, you must be:

- A United States citizen
- A resident of California
- 18 years of age or older on Election Day

Students may refer to the following website to download voter registration forms. <https://www.sos.ca.gov/nvrc/fedform/>

California Massage Therapy Council Disclosure Statement

Attendance and/or graduation from a California Massage Therapy Council approved school does not guarantee certification by CAMTC. Applicants for certification shall meet all requirements as listed in California Business and Professions Code section 4600 et. seq.

ACADEMIC PROGRAMS

Institution ID:	03740400	
Program Name:	Bachelor of Science in Diagnostic Sonography with Concentration in Healthcare Administration	
Program Length in Months:	30	
Clock Hours:	2815	
Semester Credit:	120	
Related Occupation:	29-2034: Radiologic technologists and technicians 29-2032: Diagnostic Medical Sonographers 29-2071: Medical Records and Health Information Technicians 31-9094: Medical Transcriptionists 11-9110: Medical and Health Services Managers 43-9199: Office and Administrative Support Workers, All Other 43-4199: Information and Record Clerks, All Other 43-4161: Human Resources Assistants	
Vocational Objective:	The Bachelor of Science in Diagnostic Sonography with Concentration in Healthcare Administration is designed to broaden the leadership skills of Sonographers who have healthcare administration background. Program builds on clinical and administrative skills learned in health-care related programs offered at ATI College. For students coming from outside the diagnostic medical sonography and healthcare administration field, the program provides an introduction to dynamic industry and a chance to build connections with fellow students in the local health care community.	
Industry Occupations:	Most graduates from the Bachelor of Science in Diagnostic Sonography with Concentration in Healthcare Administration hold job titles such as the diagnostic medical sonographers, medical and health services administrators, also called healthcare managers or healthcare administrators, who will plan, direct, and coordinate medical and health services. They might manage an entire facility, a specific clinical area or department, or a medical practice for a group of physicians. Medical and health services administrators must direct changes that conform to changes in healthcare laws, regulations, and technology. In addition to holding a job title such as the medical and health services administrators, graduates will perform his/her duties as a general sonographer for the radiology department within the hospital or clinical setting (https://www.bls.gov/ooh/management/medical-and-health-services-managers.htm & https://www.bls.gov/ooh/healthcare/diagnostic-medical-sonographers.htm).	
Tuition for entire program:	US Resident:	\$56,500.00
	International Student:	\$71,900.00
TOTAL CHARGES FOR A PERIOD OF ATTENDANCE:	120 Semester Credits (approximately 30 months)	
Books and Uniforms for the entire program:	\$4,150.00	
Registration:	US Resident:	\$75.00
	International Student:	\$150.00
TOTAL CHARGES FOR A PERIOD OF ATTENDANCE:	US Resident:	\$60,725.00
	International Student:	\$76,200.00
TOTAL CHARGES FOR THE ENTIRE EDUCATIONAL PROGRAM:	US Resident:	\$60,725.00
	International Student:	\$76,200.00
Total room and board charges for living on campus:	N/A	
No housing on campus:	NONE	
School website:	http://www.ati.edu	

TECHNICAL COURSES:

COURSE CODE	COURSE TITLE	DIDACTIC	SUPERVISED LAB	EXTERNSHIP	TOTAL INSTRUCTIONAL CLCOKC HOURS	TOTAL SEMESTER CREDIT HOURS
VAS 301	Vascular Technology I	90.00	0.00	0.00	90	4.50
VAS 301	Vascular Technology I	0.00	90.00	0.00	90	3.00

VAS 302	Vascular Technology II	90.00	0.00	0.00	90	4.50
VAS 302	Vascular Technology II	0.00	90.00	0.00	90	3.00
PHY 301	Physics and Instrumentation I	90.00	0.00	0.00	90	4.50
PHY 301	Physics and Instrumentation I	0.00	90.00	0.00	90	3.00
PHY 302	Physics and Instrumentation II	90.00	0.00	0.00	90	4.50
PHY 302	Physics and Instrumentation II	0.00	90.00	0.00	90	3.00
ABD 301	Abdomen and Small Parts Sonography I	90.00	0.00	0.00	90	4.50
ABD 301	Abdomen and Small Parts Sonography I	0.00	90.00	0.00	90	3.00
ABD 302	Abdomen and Small Parts Sonography II	90.00	0.00	0.00	90	4.50
ABD 302	Abdomen and Small Parts Sonography II	0.00	90.00	0.00	90	3.00
OBG 301	Obstetrics and Gynecology Sonography I	90.00	0.00	0.00	90	4.50
OBG 301	Obstetrics and Gynecology Sonography I	0.00	90.00	0.00	90	3.00
OBG 302	Obstetrics and Gynecology Sonography II	90.00	0.00	0.00	90	4.50
OBG 302	Obstetrics and Gynecology Sonography II	0.00	90.00	0.00	90	3.00
EXT 400	Clinical Externship	0.00	0.00	520.00	520	11.50
TOTAL TECHNICAL CREDITS:						71.50

CONCENTRATION COURSES:

COURSE CODE	COURSE TITLE	DIDACTIC	SUPERVISED LAB	EXTERNSHIP	TOTAL INSTRUCTIONAL CLCOKC HOURS	TOTAL SEMESTER CREDIT HOURS
HEA 310	Healthcare Administration	45.00	0.00	0.00	45.00	2.00
COM 201	Computerized Medical Administration	45.00	0.00	0.00	45.00	2.00
HEA 320	Human Resources Management	45.00	0.00	0.00	45.00	2.00
PHA 300	Pharmacy Essentials	45.00	0.00	0.00	45.00	2.00
ACC 200	Introduction to Accounting	45.00	0.00	0.00	45.00	2.00
ACC 300	Principles of Accounting	45.00	0.00	0.00	45.00	2.00
PRO 400	Professional Development	90.00	0.00	0.00	90.00	4.00
MED 300	Medical Records and Billing	45.00	0.00	0.00	45.00	2.00
TOTAL CONCENTRATION CREDITS:						18.00

GENERAL EDUCATION COURSES:

COURSE CODE	COURSE TITLE	DIDACTIC	SUPERVISED LAB	EXTERNSHIP	TOTAL INSTRUCTIONAL CLCOKC HOURS	TOTAL SEMESTER CREDIT HOURS
ANA 201	Anatomy and Physiology	90.00	0.00	0.00	90.00	6.00
COMM 101	Introduction to Communication	45.00	0.00	0.00	45.00	3.00
ENGL 101	English Composition	45.00	0.00	0.00	45.00	3.00
ENGL 301	Advanced Composition	45.00	0.00	0.00	45.00	3.00
MAT 101	College Algebra	45.00	0.00	0.00	45.00	3.00
INFO 101	Introduction to Humanities	45.00	0.00	0.00	45.00	3.00
COM 101	Computer Fundamentals	45.00	0.00	0.00	45.00	3.00
PHY 101	Physics	45.00	0.00	0.00	45.00	3.00
SOC 201	Organizational Ethics	45.00	0.00	0.00	45.00	3.00
TOTAL GENERAL EDUCATION CREDITS:						30.00

COURSE DESCRIPTIONS:

ANA 201 - Anatomy and Physiology

Comprehensive knowledge of Anatomy and Physiology is a fundamental prerequisite to Medical sciences. Upon completion of this subject, the student will have practical knowledge about the structural levels of organization, anatomical components, and physiology. The student will also learn about Medical terminology and relationships related to various body organs and anatomical directions, planes, and body cavities. The student will have a clear understanding of the anatomy and physiology of a typical cell, tissues, organs, systems of the human body and homeostasis and its importance in the human body.

Prerequisite: None

90 Hours

6 Semester Credits

ENGL 101 - English Composition

Students will learn to study and apply rhetorical principles of writing in developing effective sentences, paragraphs, and essays, with particular emphasis on writing expository prose about short fiction and non-fiction prose.

Prerequisite: None

45 Hours

3 Semester Credits

ENGL 301 - Advanced Composition

This course is designed to help students develop sophisticated written texts. Course emphasizes critical reading, analysis, and writing while incorporating advanced research methods.

Prerequisite: ENG 101

45 Hours

3 Semester Credits

MAT 101 - College Algebra

The course is designed to familiarize learners with fundamental mathematical concepts such as inequalities, polynomials, linear and quadratic equations, and logarithmic and exponential functions.

Prerequisite: None

45 Hours

3 Semester Credits

INFO 101 - Introduction to Humanities

Students will discover the importance of the arts and humanities in shaping and reflecting various cultures as well as their importance in enriching one's individual life. Students will be exposed to many primary works of visual art, literature, music, and film that they will find wondrous, perplexing, hideous, unsettling—maybe even offensive. They will work on how to evaluate and appreciate these works, all in the interest of sharpening their aesthetic perception. Students will practice expressing themselves regarding the humanities clearly and effectively in informal and formal writing.

Prerequisite: None

45 Hours

3 Semester Credits

COM 101 - Computer Fundamentals

In this course, you will identify PC components, work with files and folders, and conduct basic software installations. This course will provide students with the fundamental skills and concepts required to maintain, support, and work efficiently with personal and work computers.

Prerequisite: None

45 Hours

3 Semester Credits

PHY 101 – Physics

This course provides a conceptually-based exposure to the fundamental principles and processes of the physical world. Topics include basic concepts of motion, forces, energy, heat, electricity, magnetism, and the structure of matter and the universe.

Prerequisite: None

45 Hours

3 Semester Credits

SOC 201 - Organizational Ethics

This course is designed to raise student's awareness and interest in the importance of creating and maintaining a solid ethical framework within all types of organizations. The core focus of the course is in defining, discussing, and addressing the unique regulatory, cultural, and personal ethical dilemmas that organization leaders confront in today's global economy. Nuances and realities of formal (regulatory), cultural, and personal ethical risks are presented for discussion.

Prerequisite: None

45 Hours

3 Semester Credits

COMM 101 – Introduction to Communication

This course is an introduction to the history, theory, and practice of communication, including language and literacy, representation and semiotics, mediated technologies and institutional formations, and social interaction. This course integrates the study of communication with a range of media production (for example, writing, electronic media, film, performance).

Prerequisite: None

45 Hours

3 Semester Credits

HEA 310 - Healthcare Administration

This course provides an overview of health delivery systems, organizational theory, and the conceptual basis of traditional managerial and administrative leadership roles in health care facilities. Emphasis will be placed on the application of theory and best practice standards to the demands of the healthcare environment. Special emphasis will be placed on the development of leadership competencies and skills through the selection of a broad range of specialty topics including: the health system, strategic planning, organizational structure, organizational performance, organizational change, motivation, problem solving, organizational communication and motivation.

Prerequisite: None

45 Hours

2 Semester Credits

COM 201 - Computerized Medical Administration

Students will learn the basics of medical practice management software which includes setting patients' appointments, maintaining physicians' calendars, billing and messaging, as well as specific interpersonal communications skills necessary in a medical setting. Students will gain competence in word processing, spreadsheet, database and presentation software. Keyboarding speed and accuracy is developed while grammar, punctuation, and writing skills are enhanced.

Prerequisite: COM 101

45 Hours

2 Semester Credits

HEA 320- Human Resources Management

This course examines the role of the human resource professional as a strategic partner in managing today's organizations. Key functions such as recruitment, selection, development, appraisal, retention, compensation, and labor relations are examined.

Prerequisite: HEA 310

45 Hours

2 Semester Credits

PHA 300- Pharmacy Essentials

Students will study about disease mechanisms, pharmaceutical formulation, immunology, medicinal chemistry, introduction to the professional issues relevant to the practice of pharmacy, and pharmacology along with topics related to introductory level of pharmacy practice settings.

Prerequisite: None

45 Hours

2 Semester Credits

ACC 200- Introduction to Accounting

This course is an introduction to the basic concepts and standards underlying financial accounting systems. Several important concepts will be studied in detail, including: revenue recognition, inventory, long-lived assets, present value, and long term liabilities. The course emphasizes the construction of the basic financial accounting statements - the income statement, balance sheet, and cash flow statement - as well as their interpretation.

Prerequisite: None

45 Hours

2 Semester Credits

ACC 300- Principles of Accounting

This course provides the essentials of fundamental accounting such as: definition of Accounting, users of accounting information, accounting concepts and principles, accounting equation, measuring and recording of business transactions, adjusting entries, completing the accounting cycle, classified financial statements, depreciation, inventories, managerial accounting basics, cost behavior, cost volume-profit and its analysis and budgeting.

Prerequisite: ACC 200

45 Hours

2 Semester Credits

PRO 400- Professional Development

The Professional Development course is designed to improve the ability of students to describe their accomplishments and sell their ideas in situations like professional networking, company meetings, response to proposals for services, and interviews. It teaches writing skills and workplace integration for new jobs. Particular emphasis is put on verbal communication and preparation for verbal communication. Students will learn to create career plans that require them to research career options and potential employers, and prepare a developmental roadmap that will lead them success within the chosen profession.

Prerequisite: EXT 400

90 Hours

4 Semester Credits

MED 300 - Medical Records and Billing

The practical application of coding and classification for billing and insurance reimbursement is the focus of this course. Lessons cover codes and classifications for medical procedures and medical diagnoses and guidelines for use in medical records. Students also learn HIPAA (Health Insurance Portability and Accountability Act) guidelines and how they relate to the preparation of medical records. Students are also introduced to common health insurance company requirements for handling claims and typical office billing procedures. Students practice processing Medicare, Medicaid and workers compensation claims for outpatient and in-patient treatment.

Prerequisite: ACC 300

45 Hours

2 Semester Credits

VAS 301- Vascular Technology I

This course is designed to prepare the students for successful acquisition of the Registered Vascular Technologist (RVT) credential. This course contains separate modules leading the students through topics including human anatomy, physiology, pathophysiology of many disease processes, as well as methods of investigating and diagnosing vascular disease.

Prerequisite: ANA 201, MED 101, PHS 101

Didactic – 90 Hours (4.50 Semester Credits)

Supervised Lab – 90 Hours (3.00 Semester Credits)

VAS 302- Vascular Technology II

This course is continuation of VAS 301 and is designed to prepare the applicant for the successful acquisition of the Registered Vascular Technologist (RVT) credential. Students will gain knowledge, skills and abilities in the areas of anatomy and hemodynamics (blood flow) of cerebrovascular, venous, peripheral and abdominal blood vessels.

Prerequisite: ANA 201, MED 101, PHS 101, VAS 301

Didactic – 90 Hours (4.50 Semester Credits)

Supervised Lab – 90 Hours (3.00 Semester Credits)

PHY 301- Physics and Instrumentation I

This course is designed to prepare the students for successful acquisition of the Sonography Principles & Instrumentation examination. Students will learn the skills and abilities in the areas of clinical safety, physical principles, pulsed echo instrumentation, and quality assurance. SPI exam meets the fundamental physical principles and instrumentation requirements for the RDMS, RDCS, RVT and RMSKS credentials.

Prerequisite: ANA 201, MED 101, PHS 101

Didactic – 90 Hours (4.50 Semester Credits)

Supervised Lab – 90 Hours (3.00 Semester Credits)

PHY 302- Physics and Instrumentation II

This course is continuation of PHY 301 and is designed to further prepare students for successful acquisition of the Sonography Principles & Instrumentation examination. Students will learn the skills and abilities in the areas of clinical safety, physical principles, pulsed echo instrumentation, and quality assurance.

Prerequisite: ANA 201, MED 101, PHS 101, PHY 301

Didactic – 90 Hours (4.50 Semester Credits)

Supervised Lab – 90 Hours (3.00 Semester Credits)

ABD 301- Abdomen and Small Parts Sonography I

This course is designed to prepare the students for successful acquisition of the AB examination. Students will gain knowledge, skills, and abilities in the areas of soft tissues, blood vessels and organs of the abdominal cavities.

Prerequisite: ANA 201, MED 101, PHS 101

Didactic – 90 Hours (4.50 Semester Credits)

Supervised Lab – 90 Hours (3.00 Semester Credits)

ABD 302- Abdomen and Small Parts Sonography II

This course is continuation of ABD 301 and is designed to further prepare students for successful acquisition of the AB examination. Students will continue to gain knowledge, skills, and abilities in the areas of soft tissues, blood vessels and organs of the abdominal cavities.

Prerequisite: ANA 201, MED 101, PHS 101, ABD 301

Didactic – 90 Hours (4.50 Semester Credits)

Supervised Lab – 90 Hours (3.00 Semester Credits)

OBG 301- Obstetrics and Gynecology Sonography I

This course is designed to teach students the basic obstetrics and gynecology knowledge and skills essential to Sonography Professionals. Students will be prepared for successful acquisition of the OB/GYN examination which assesses the knowledge, skills and abilities in the areas of the female reproductive system as well as the fetus in the first, second and third trimesters of pregnancy.

Prerequisite: ANA 201, MED 101, PHS 101

Didactic – 90 Hours (4.50 Semester Credits)

Supervised Lab – 90 Hours (3.00 Semester Credits)

OBG 302- Obstetrics and Gynecology Sonography II

This course is continuation of OBG 301 and is designed to further prepare students for successful acquisition of the OB/GYN examination. Students will continue to gain knowledge, skills, and abilities in the areas of the female reproductive system as well as the fetus in the first, second and third trimesters of pregnancy.

Prerequisite: ANA 201, MED 101, PHS 101, OBG 301

Didactic – 90 Hours (4.50 Semester Credits)

Supervised Lab – 90 Hours (3.00 Semester Credits)

EXT 400- Clinical Externship

The Clinical Externship experience provides the student with the opportunity to practice the skills they have been taught in school. It is a real world scenario in which the student will work with patients, doctors, and other members of the healthcare delivery team. The Externship Site Supervisor will complete weekly evaluations tracking the student’s progress, as well as a final evaluation at the completion of the student’s hours. The Director of Education will monitor the student’s progress, along with the Externship Site Supervisor, at the time of onsite visits.

Prerequisite: ANA 201, MED 101, PHS 101, VAS 301, VAS 302, PHY 301, PHY 302, ABD 301, ABD 302, OBG 301, OBG 302, HEA 320, COMP 201, ACC 300, MED 300

520 Hours

11.5 Semester Credits

TEXTBOOKS & LEARNING MATERIALS:

Course Code	Course Title	Assigned Textbook & Publication Year	Supplies, equipment, and audio/visual aids
VAS 301	Vascular Technology I	<ol style="list-style-type: none"> Ann Marie Kupinski, Introduction to Vascular Ultrasonography (Second Edition, 2016) Reva Curry/Betty Bates Tempkin, Sonography, Introduction to Normal Structure and Function, 4th ed, 2016 Reva Curry/Betty Bates Tempkin, Workbook and Lab Manual for Sonography: Introduction to Normal Structure and Function, 4th ed, 2017 Betty Bates Tempkin, Ultrasound Scanning Principles and Protocols, 4th ed, 2015 	ProQuest E-Library, 2/3D ultrasound, ARDMS Vascular Technology (VT) Practice Test.
VAS 302	Vascular Technology II		
PHY 301	Physics and	<ol style="list-style-type: none"> Sidney K. Edelman, Understanding 	ProQuest E-Library, 2/3D

	Instrumentation I		
PHY 302	Physics and Instrumentation II	<ul style="list-style-type: none"> 1. Ultrasound Physics Fourth Edition (2012) 2. Reva Curry/Betty Bates Tempkin, Sonography, Introduction to Normal Structure and Function, 4th ed, 2016 3. Reva Curry/Betty Bates Tempkin, Workbook and Lab Manual for Sonography: Introduction to Normal Structure and Function, 4th ed, 2017 4. Betty Bates Tempkin, Ultrasound Scanning Principles and Protocols, 4th ed, 2015 	ultrasound, ARDMS online versions of the SPI Practice Test — SPIa and SPIb.
ABD 301	Abdomen and Small Parts Sonography I	<ul style="list-style-type: none"> 1. Diane M. Kawamura & Bridgett M. Lunsford, Abdomen and Superficial Structures, 4th ed, 2018 2. Reva Curry/Betty Bates Tempkin, Sonography, Introduction to Normal Structure and Function, 4th ed, 2016 3. Reva Curry/Betty Bates Tempkin, Workbook and Lab Manual for Sonography: Introduction to Normal Structure and Function, 4th ed, 2017 4. Betty Bates Tempkin, Ultrasound Scanning Principles and Protocols, 4th ed, 2015 	ProQuest E-Library, 2/3D ultrasound, ARDMS Abdomen (AB) Practice Test.
ABD 302	Abdomen and Small Parts Sonography II		
OBG 301	Obstetrics and Gynecology Sonography I	<ul style="list-style-type: none"> 1. Susan Raatz Stephenson, Obstetrics and Gynecology, 4th ed, 2018 2. Reva Curry/Betty Bates Tempkin, Sonography, Introduction to Normal Structure and Function, 4th ed, 2016 3. Reva Curry/Betty Bates Tempkin, Workbook and Lab Manual for Sonography: Introduction to Normal Structure and Function, 4th ed, 2017 4. Betty Bates Tempkin, Ultrasound Scanning Principles and Protocols, 4th ed, 2015 	ProQuest E-Library, 2/3D ultrasound, ARDMS Obstetrics and Gynecology (OB/GYN) Practice Test.
OBG 302	Obstetrics and Gynecology Sonography II		
MED 101	Medical Terminology	<ul style="list-style-type: none"> 1. Ehrlich/Schroeder, Medical Terminology for Health Professions (Text)(2012) 2. Ehrlich/Schroeder, Medical Terminology for Health Professions (Workbook)(2012) 	ProQuest E-Library, laptop.
ENGL 101	English Composition	<ul style="list-style-type: none"> 1. English: Composition and Literature (Classic Reprint) Paperback – June 22, 2012 by William Franklin Webster (Author) 2. The Blue Book of Grammar and Punctuation: An Easy-to-Use Guide with Clear Rules, Real-World Examples, and Reproducible Quizzes 11th Edition, 2011, by Jane Straus (Author), Lester Kaufman (Author), Tom Stern (Author) 	ProQuest E-Library, laptop.
CRT 101	Critical Thinking	<ul style="list-style-type: none"> 1. Introduction to Logic and Critical Thinking; Matthew Van Cleave, Lansing Community College Copyright Year: 2016 2. The Merriam-Webster Dictionary New Edition (c) 2016; Mass Market Paperback – January 1, 2016 	ProQuest E-Library, laptop.
MAT 101	College Algebra	College Algebra (12th Edition, 2016) 12th Edition by Margaret L. Lial (Author), John Hornsby (Author), David I. Schneider (Author), Callie Daniels (Author)	ProQuest E-Library, laptop.
INF 101	Introduction to Humanities	Arts and Culture: An Introduction to the Humanities, Combined Volume (4th Edition, 2011) 4th Edition by Janetta Rebold Benton (Author), Robert J. DiYanni (Author)	ProQuest E-Library, laptop.

COP 101	Computer Fundamentals	Fundamentals of Computers Paperback – September 11, 2015 by Manallah Abid (Author), Mohammad Amjad (Author)	ProQuest E-Library, laptop.
PHY 101	General Physics	Fundamentals of Physics by David Halliday, Robert Resnick and Jearl Walker (2013, Ringbound, 10th Edition)	ProQuest E-Library, laptop.
SOC 201	Organizational Ethics	Organizational Ethics: A Practical Approach 4th Revised edition (2018) by Craig E. Johnson (Author)	ProQuest E-Library, laptop.
COM 101	Oral Communication	Introduction to Communication Studies, 3rd edition by John Fiske (Author)(2011)	ProQuest E-Library, laptop.
COP 201	Computerized Administration	Health Information Technology and Management 1st Edition by Richard Gartee (Author)(2010)	ProQuest E-Library, laptop.
ACC 200	Essential Accounting	<ol style="list-style-type: none"> 1. Fundamental Accounting Principles 23rd Edition by John J Wild (Author), Ken Shaw Accounting Professor (Author), Barbara Chiappetta Fundamental Accounting Principles (Author)(2016) 2. Connect Access Card for Fundamental Accounting Principles 23rd Edition (2016) 	ProQuest E-Library, laptop.
ANA 201	Anatomy and Physiology	<ol style="list-style-type: none"> 1. Ehrlich/Schroeder, Medical Terminology for Health Professions (Text)(2012) 2. Ehrlich/Schroeder, Medical Terminology for Health Professions (Workbook)(2012) 	ProQuest E-Library, laptop.
MME 300	Insurance Coding, Claims, and Collections	Electronic Health Records: Understanding and Using Computerized Medical Records Plus NEW MyHealthProfessions Lab with Pearson eText-- Access Card Package (3rd Edition) (2016) 3rd Edition by Richard Gartee (Author)	ProQuest E-Library, laptop.
HEA 310	Healthcare Administration	<ol style="list-style-type: none"> 1. Getzen, Thomas. 2007. Health Care Economics: Wiley Publishing. ISBN-13 9780-471-79076-1 2. Feldstein, Paul J. 2011. Health Policy Issues, An Economic Perspective, Health Administration Press 3. Conover, Christopher J. 2012. American Health Economy Illustrated, American Enterprise Institute 	ProQuest E-Library, laptop.
HEA 320	Human Resources and Risk Management	Human Resource Management 15th Edition (2017) by Robert L. Mathis (Author), John H. Jackson (Author), Sean R. Valentine (Author), Patricia Meglich (Author)	ProQuest E-Library, laptop.
EXT 400	Clinical Externship	ATI College - Clinical Externship Handbook (2020-2021)	ProQuest E-Library, laptop.

Institution ID:	03740400
Program Name:	Echocardiography
Program Length in Months:	18 (F/T) 27 (P/T)
Clock Hours:	2170
Semester Credit:	82
Outside Work Clock Hours:	542.5
Program CIP:	51.0901
Program Level:	01: Certificate
Related Occupation:	29-1126.00: Respiratory Therapists 29-2033.00: Nuclear Medicine Technologists 29-2034.01: Radiologic Technologists 29-2034.02: Radiologic Technicians 29-2052.00: Pharmacy Technicians 31-9091.00: Dental Assistants 31-9092.00: Medical Assistants
Total tuition for entire program:	\$30325.00
Total of books for the entire program:	\$985.00
Uniforms:	\$60.00
Registration:	\$75.00
TOTAL CHARGES FOR A PERIOD OF ATTENDANCE:	\$31,445.00
TOTAL CHARGES FOR THE ENTIRE EDUCATIONAL PROGRAM:	\$31,445.00
Total room and board charges for living on campus:	N/A
No housing on campus:	NONE
School website:	http://www.ati.edu

Program description & objectives:

Echocardiography program offers exceptional clinical didactic education and hands-on practical experiences needed to create a well-rounded, fully competent cardiac sonographer for an entry-level position in the occupations and job titles to which the program is represented to lead. Upon successful completion of this program, graduate is awarded a completion certificate. Student will have opportunity to train and observe in the field of adult echocardiography including patient management and clinical medicine, ultrasound physics and instrumentation, pathophysiology of cardiovascular diseases and therapeutic measures, 2D & M mode echocardiography, cardiac doppler and color flow echocardiography, advanced techniques in echocardiography and stress echocardiography.

- **Medical Terminology, Anatomy, and Physiology (180 clock hrs/8.5 semester credits):** This module is designed to provide students with the basic fundamental knowledge of human anatomy and medical terminology including body organization, cell tissue membranes, special senses, endocrine, musculoskeletal, nervous, cardiovascular, urinary, reproductive and related pathology. Students will gain knowledge of cross sectional views of the human body, and the fundamental knowledge to succeed in the General ultrasound and Echocardiography technology programs (No prerequisite).
- **Vascular Technology: Module 1 (180 clock hrs/7.5 semester credits):** This course will prepare students with introduction knowledge to vascular technology and sonography. Students will be introduced to Lab and lectures of vascular system. Sonographic and physiologic testing for Upper and lower extremities arteries, including normal vs. pathological conditions (Prerequisite: satisfactory completion of Terminology, Anatomy, and Physiology module).
- **Vascular Technology: Module 2 (180 clock hrs/7.5 semester credits):** In this module students will be introduced to Lab and lectures of venous systems, Sonographic and physiologic testing for upper and lower extremity venous systems, and, Abdominopelvic vascular systems, including normal vs. pathological conditions (Prerequisite: satisfactory completion of Terminology, Anatomy, and Physiology module).
- **Sound Physics & Instrumentation: Module 1 (180 clock hrs/7.5 semester credits):** In this module students are introduced to lectures and Lab studies related to the basics of the sound waves physics, their interaction of human tissues, image formations and ultrasonography transducers (Prerequisite: satisfactory completion of Terminology, Anatomy, and Physiology module).
- **Sound Physics & Instrumentation: Module 2 (180 clock hrs/7.5 semester credits):** include Lab and lectures for understanding of the sonography instrumentations and image display, Doppler applications, color flow, 3D and 4D

scanning instrumentation and patients safety (Prerequisite: satisfactory completion of Terminology, Anatomy, and Physiology module).

- **Echocardiography 1A & B (360 clock hrs/15 semester credits):** These modules prepare students with an introduction to cardiac sonography. Cardiac anatomy, hemodynamics, special analysis, obtaining echocardiographic imaging, measurements, and pathological conditions are discussed. These pathological conditions are Coronary Artery Disease, Complications of MI, and Pericardial Diseases. Module will further provide training in ultrasound of the vascular system including carotid arteries, arterial ultrasound of the extremities and venous studies of the lower extremities. The students will learn how to do Doppler ultrasound including color flow imaging and analysis and how to evaluate waveforms (Prerequisite: satisfactory completion of Terminology, Anatomy, and Physiology module).
- **Echocardiography 2A & B (360 clock hrs/15 semester credits):** This module prepares students to understand the advanced level of study of the echocardiography. This module prepares students to recognize and interpret the conditions and symptoms of the cardiac Valvular diseases and their hemodynamics. As well as the Congenital Heart Diseases and their presentations (Prerequisite: satisfactory completion of Terminology, Anatomy, and Physiology module).
- **Clinical Externship (550 clock hrs/13.5 semester credits):** Students participate in a clinical externship where they will gain hands on training in a hospitals and/or clinics. Students are required to be available days and evenings, externship is part of program and must complete externship hours/credits in order to graduate from the program (Prerequisite: satisfactory completion of Terminology, Anatomy, and Physiology, Vascular 1&2, Physics and Instrumentation1&2, Echocardiography 1A&B, Echocardiography 2A&B modules).

Required Textbooks:

Course Title	ISBN	List Price
Medical Terminology	9781305634350	\$100.00
Reference Sonography	9780323322843	\$135.00
Reference Workbook	9780323545235	\$100.00
Sonography Scanning	9781455773213	\$135.00
Vascular 1 & 2	9781496380593	\$100.00
Physics 1 & 2	9780962644450	\$155.00
Clinical Echocardiography	9781455728572	\$130.00
Echocardiography Pocket Book	9780615768359	\$130.00

Institution ID:	03740400
Program Name:	Ultrasound Technology
Program Length in Months:	18 (F/T) 27 (P/T)
Clock Hours:	2140
Semester Credit:	81.5
Outside Work Clock Hours:	535
Program CIP:	51.0910
Program Level:	01: Certificate
Related Occupation:	29-2031.00: Cardiovascular technologists and technicians 29-2012.00: Clinical laboratory technologists and technicians 29-2033.00: Nuclear medicine technologists 29-2034.00: Radiologic technologists and technicians
Tuition for entire program:	\$28,825.00
TOTAL CHARGES FOR A PERIOD OF ATTENDANCE:	18-27 months
Books for the entire program:	\$1,015.00
Uniforms:	\$60.00
Registration:	\$75.00
TOTAL CHARGES FOR A PERIOD OF ATTENDANCE:	\$29,975.00
TOTAL CHARGES FOR THE ENTIRE EDUCATIONAL PROGRAM:	\$29,975.00
Total room and board charges for living on campus:	N/A
No housing on campus:	NONE
School website:	http://www.ati.edu

Program description & objectives: The objective of the Ultrasound Technology program is to prepare students with the knowledge, technical skills, and work habits required for an entry-level position in the occupations and job titles to which the program is represented to lead. Upon successful completion of this program, graduate is awarded a completion certificate. Graduates of this program may assume a responsible position as a member of the health team in a hospital, imaging center, doctor's office, or clinic. Positions may also be available in private practice, industry, or government. Duties may include performing ultrasound scans of the upper abdomen, pelvic area, Vascular studies and Obstetric and Gynecologic scans.

- **Medical Terminology, Anatomy, and Physiology (180 clock hrs/8.5 semester credits):** This module is designed to provide students with the basic fundamental knowledge of human anatomy and medical terminology including body organization, cell tissue membranes, special senses, endocrine, musculoskeletal, nervous, cardiovascular, urinary, reproductive and related pathology. Students will gain knowledge of cross sectional views of the human body, and the fundamental knowledge to succeed in the General ultrasound and Echocardiography technology programs (No prerequisite).
- **Vascular Technology: Module 1 (180 clock hrs/7.5 semester credits):** This course will prepare students with introduction knowledge to vascular technology and sonography. Students will be introduced to Lab and lectures of vascular system. Sonographic and physiologic testing for Upper and lower extremities arteries, including normal vs. pathological conditions (Prerequisite: satisfactory completion of Terminology, Anatomy, and Physiology module).
- **Vascular Technology: Module 2 (180 clock hrs/7.5 semester credits):** In this module students will be introduced to Lab and lectures of venous systems, Sonographic and physiologic testing for upper and lower extremity venous systems, and, Abdominopelvic vascular systems, including normal vs. pathological conditions (Prerequisite: satisfactory completion of Terminology, Anatomy, and Physiology module).
- **Sound Physics & Instrumentation: Module 1 (180 clock hrs/7.5 semester credits):** In this module students are introduced to lectures and Lab studies related to the basics of the sound waves physics, their interaction of human tissues, image formations and ultrasonography transducers (Prerequisite: satisfactory completion of Terminology, Anatomy, and Physiology module).
- **Sound Physics & Instrumentation: Module 2 (180 clock hrs/7.5 semester credits):** include Lab and lectures for understanding of the sonography instrumentations and image display, Doppler applications, color flow, 3D and 4D scanning instrumentation and patients safety (Prerequisite: satisfactory completion of Terminology, Anatomy, and Physiology module).

- **Abdomen and small parts sonography: Module 1 (180 clock hrs/7.5 semester credits):** This module is designed to provide students with hands on laboratory and lectures of the basic abdominal organs anatomy and functions as it relates to clinical and sonographic presentations of normal and pathologic conditions (Prerequisite: satisfactory completion of Terminology, Anatomy, and Physiology module).
- **Abdomen and small parts sonography: Module 2 (180 clock hrs/7.5 semester credits):** This module is designed to provide students with hands on laboratory and lectures of the basic small parts anatomy and functions as it relates to clinical and sonographic presentations of normal and pathologic conditions (Prerequisite: satisfactory completion of Terminology, Anatomy, and Physiology module).
- **Obstetrics and Gynecology sonography: Module 1 (180 clock hrs/7.5 semester credits):** This module provides hands on laboratory and lecture studies for the basic knowledge and skills to perform first, second and third trimester studies; recognize normal vs. abnormal conditions, maternal complications, and fetal assessment. Special gynecological procedures are also discussed in this course (Prerequisite: satisfactory completion of Terminology, Anatomy, and Physiology module).
- **Obstetrics and Gynecology sonography: Module 2 (180 clock hrs/7.5 semester credits):** This module provides hands on laboratory and lectures for the basic knowledge that will help distinguish the normal and common variant anatomy vs. common pathologic conditions (Prerequisite: satisfactory completion of Terminology, Anatomy, and Physiology module).
- **Clinical Externship (520 clock hrs/13 semester credits):** Students' participate in clinical externship where they will gain hands on training in general ultrasound. Students are required to be available days and evenings, the externship is part of the program and must complete all hours in order to graduate from the program (Prerequisite: satisfactory completion of Terminology, Anatomy, and Physiology, Abdomen 1&2, OB/GYN 1&2, Vascular 1&2, Physics and Instrumentation1&2 modules).

Required Textbooks:

Course Title	ISBN	List Price
Medical Terminology	9781305634350	\$100.00
Reference Sonography	9780323322843	\$135.00
Reference Workbook	9780323545235	\$100.00
Sonography Scanning	9781455773213	\$135.00
Vascular 1 & 2	9781496380593	\$100.00
Physics 1 & 2	9780962644450	\$155.00
Abdomen 1 & 2	9781496354921	\$155.00
OB/GYN 1 & 2	9781496385512	\$135.00

Institution ID:	03740400
Course Name:	Vocational English as a Second Language (ESL)
TOTAL CHARGES FOR A PERIOD OF ATTENDANCE:	50 weeks
Clock Hours:	740
Semester Credit:	32.5
Study Level:	Certificate of Course Completion
Tuition for the entire ESL learning:	\$7,200.00
Books and supplies for the entire learning:	\$200.00
Registration:	\$75.00
TOTAL CHARGES FOR A PERIOD OF ATTENDANCE:	\$7,475.00
TOTAL CHARGES FOR THE ENTIRE EDUCATIONAL DURATION:	\$7,475.00
Total room and board charges for living on campus:	N/A
No. housing on campus:	NONE
School website:	http://www.ati.edu

Content and Approach

ESL courses are front-loaded studies in which the student completes courses prior to the career-oriented vocational courses at this College. ESL courses focus on the development of the communication and job search skills necessary for employment in the health care field in the United States. Topics include health professions in the United States, career pathways, communication with patients and co-workers, health care systems, current critical health issues, and intercultural communication skills.

Participant will practice the skills of speaking, listening, reading, and writing. We will use activities based on day-to-day health care situations, readings related to health care and cases studies from different health professions. The communicative approach of the courses is based on individual pair, and group task and projects. Each class session will include problem-solving and critical thinking activities in which you will work both individually and collaborate with classmates.

Goals

ESL is a 40-week study made up of several courses in English for health professionals. Participant will make progress toward the overall goal of ESL. At the end of 40-week study, participant will have improved communications skills in English based on ones increased ability to:

- Use strategies and skills for pursuing career goals in health care and making informed career choices.
- Communicate effectively and appropriately with patients and families in health care settings.
- Communicate effectively and appropriate with other health care professional in health care settings.
- Understand systems, requirements, and issues in health care in the United States and California.
- Understand how cross-culture beliefs, traditions, and behaviors impact everyday communication in health care.
- Use strategies and skills for exploring your own ongoing professional development beyond the current course.

Admissions Process

- Inquiring applicant is scheduled to visit the school.
- Inquiring applicant must have a personal interview with an admission representative. During the interview, applicant is asked to provide TOEFL or TOEIC score earned in the last 12-months. Evaluating the effectiveness of the school's course offerings and the impact of student workforce readiness, the test is given at the beginning and end of each course, the increase in test scores can show how much the course improved students' language skills.
- While visiting the school, applicant receives a tour of the campus, completes an application & admissions representative explains the steps for enrollment requirements and receives an overview of the courses.
- Upon making formal application to school and meeting all of the document requirements, applicant will meet with financial officer to determine financial aide eligibility.
- Applicant attends student orientation prior to first day of class.

Assessment of Progress

Participant will work together with the instructor to evaluate his/her professional based on in-class and out-of class activities. We will use a variety of assessments methods including rubrics for ongoing self assessments and assessments by the instructor. Participant will be able to review these rubrics periodically to see your progress over time. At the end of the course, student will hand in his/her portfolio to assess achievements for the first course and to set goals for the second course of the ESL study. At the end of the 40-week study, student will attempt TOEFL or TOEIC test in order to measure one's test score against stated exit goal.

Overview

The ESL curriculum consists 740 clock hours of organized according to five major modules/courses:

- **Module 1** - Exploring Career Goals in Health Care
- **Module 2** - Communicating with Patients and Families
- **Module 3** - Communicating with other Health Professionals
- **Module 4** - Exploring Critical Issues in Health Care
- **Module 5** - Intercultural Communication in Health Care

The curriculum design is unique in that the modules and units can be linked to each other or used independently for courses and workshops of different lengths in a variety of contexts.

Objective

ESL courses are not vocational in nature and do not lead to initial employment; courses are not prerequisite or provides credit toward any vocational programs offered within the school; upon completion of the study, student will earn a Completion Certificate.

Overall Goal

To provide non-native-speaking health care workers with the English skills needed to communicate and function effectively in the workplace and to help them achieve their professional goals in the U.S.

Target Audience

1. Immigrants seeking to enter allied health program,
2. Foreign-trained health care professionals seeking to enter allied health program,
3. Incumbent health care workers with limited English proficiency seeking to enter allied health program.

Curriculum Approach

Learner-centered, content-based courses with interactive, problem-solving tasks based on everyday communication in health-care settings and current health care issues.

MODULE 1 - Exploring Career Goals in Health Care (148 clock hours)

WEEK 1	UNIT 1: Health Care Professionals and Career Paths
WEEK 2	UNIT 2: Requirements for Entry in Health Field
WEEK 3	UNIT 3: Job Search Skills
WEEK 4	UNIT 4: Job Application Process
WEEK 5	UNIT 5: Job Interview Skills
WEEK 6	UNIT 6: Professional Behavior and Workplace Expectations
WEEK 7	UNIT 7: Work & Safety Issues for Health Professionals
WEEK 8	UNIT 8: Professional Development in Health Care

MODULE 2 - Communicating with Patients and Families (148 clock hours)

WEEK 1	UNIT 1: Patient-Health Professional Relationship
WEEK 2	UNIT 2: Gathering Patient Information
WEEK 3	UNIT 3: The Patient-Centered Interview
WEEK 4	UNIT 4: Examining and Monitoring Patients
WEEK 5	UNIT 5: Developing a Treatment Plan
WEEK 6	UNIT 6: Medical Charting and Reporting
WEEK 7	UNIT 7: Patients with Special Needs
WEEK 8	UNIT 8: Handling Challenging Situations with Patients

MODULE 3 - Communicating With Other Health Professionals (148 clock hours)

WEEK 1	UNIT 1: Interaction among Health Professionals
WEEK 2	UNIT 2: Using Medical Terminology Appropriately
WEEK 3	UNIT 3: Assertive Communication with Co-Workers
WEEK 4	UNIT 4: Professional and Social Communication
WEEK 5	UNIT 5: Working Effectively on a Team

WEEK 6	UNIT 6: Supervising Health Professionals
WEEK 7	UNIT 7: Telephone and Electronic Communication
WEEK 8	UNIT 8: Handling Challenging Situations with Co-Workers

MODULE 4 - Exploring Critical Issues in Health Care (148 clock hours)

WEEK 1	UNIT 1: Understanding Health Care Systems
WEEK 2	UNIT 2: Understanding Health Care Cultures and Sub-Cultures
WEEK 3	UNIT 3: Critical Health Issues in the U.S.
WEEK 4	UNIT 4: Healthy Lifestyles and Behaviors
WEEK 5	UNIT 5: Alternative Health Perspectives
WEEK 6	UNIT 6: Health Care for an Aging Population
WEEK 7	UNIT 7: Legal & Ethical Issues in Health Care
WEEK 8	UNIT 8: Future Directions for Health and Health Professionals

MODULE 5 - Intercultural Communication in Health Care (148 clock hours)

WEEK 1	UNIT 1: Culture and Communication in Health Care
WEEK 2	UNIT 2: Beliefs and Traditions about Health and Illness
WEEK 3	UNIT 3: Cultural Diversity in Health Care
WEEK 4	UNIT 4: Serving Multicultural Patients
WEEK 5	UNIT 5: Working with Multicultural Health Professionals
WEEK 6	UNIT 6: Ethnic and Racial Disparities in Health Care
WEEK 7	UNIT 7: Analyzing the Needs of Diverse Communities
WEEK 8	UNIT 8: Serving Underserved Communities

Tuition and Fees

Programs	Clock Hours (Sem. Credits)	Outside Work Clock Hours	Tuition		Registration (US Residents)	Registration (Foreign)	Registration* (Vet)	Textbook	Uniform
Bachelor of Science in Diagnostic Sonography with Concentration in Healthcare Administration	2815 (120)	1260	US Resident:	\$56,500.00	\$75	\$150	\$10	\$4,150	Included
			International:	\$71,900.00					
Echocardiography	2170 (82)	542.5	\$30,325.00		\$75	\$150	\$10	\$985	\$60
Ultrasound Technology	2140 (81.5)	535	\$28,825.00		\$75	\$150	\$10	\$1,015	\$60
Vocational ESL (Courses)	740 (32.5)	n/a	\$7,200.00		\$75	\$150	\$10	\$200	N/A

Course materials are not included in the tuition. Student will need to purchase notebooks, pens, pencils, etc. separately. Purchased books and other supportive materials are non-refundable/non-returnable. Tuition and fees do not include testing costs for certifications, licensures, and/or credential examinations. Above tuition and other charges are applicable to students enrolled on or after August 1, 2020. *Registration fees for students receiving U.S. Veterans benefits shall be \$10.00.

As of 08/01/2020 institutional charges for the tuition charges are posted to the student tuition account on the basis of payment period by payment period. However, registration fee, books and supplies for the entire course, will be assessed and posted in the student tuition account within the first payment period. Subsequent charges will be posted as needed.

Re-Entry Policy

All students who withdraw in good standing may re-enter into the course of study without the loss of credit for prior hours and projects earned during the prior enrollment. If the student transferred to other institution before returning to ATI College, those hours and projects earned at that institution may be credited to the student for the new re-enrollment. Each re-entry is treated on an individual basis. ATI College reserves the right to reject students that had withdrawn from ATI College twice before.

Method of Payments

Students are expected to contribute from their own family resources toward the student's cost of attendance. Payment plans are available from ATI College and/or, private lenders. Federal student financial aid is available to those that qualify to cover educational expenses. Financial aid may be in forms of grants (no repayment required) and student loans (must be repaid). It is the policy of this institution to request from the student whenever possible, to contribute toward their school charges by making monthly installments in accordance to their means. It is also our policy to discourage students from borrowing loan funds unless is necessary. All estimates of available funds from financial aid will be first used to cover institutional charges; if funds remain available, they will be disbursed directly to the student. For information on the aid programs, please contact the financial aid office. The entire educational expenses need to be included in planning the student's ability to meet those expenses. All school charges must be paid in full before graduation.

California Cancellation and Refund Policies

Following are the key terms and conditions of the College's cancellation and refund policies:

Student's Right to Cancel:

1. You have the right to cancel your agreement for a program of instruction, without any penalty or obligations, through attendance at the first class session or the seventh day after enrollment, whichever is later. After the end of the cancellation period, you also have the right to stop school at any time, and you have the right to receive a pro rata refund if you have completed less than 60 percent of the scheduled days in the current payment period in your program through the last day of attendance.
2. Cancellation may occur when the student provides a written notice of cancellation at the following address: ATI College, 15141 Whittier Blvd., Suite 420, Whittier, CA 90603. This can be done by mail, email, or by hand delivery.
3. The written notice, if sent by mail, is effective when deposited in the mail properly addressed with proper postage. The written notice of cancellation need not take any particular form and, however expressed, is effective if it shows that the student no longer wishes to be bound by the Enrollment Agreement.

4. If the Enrollment Agreement is cancelled within seven days, the school will refund the student all monies paid, less a registration or administration fee, not to exceed \$75, within 45 days after the notice of cancellation is received.

THREE DAY CANCELLATION POLICY

Applicants who have not visited the College prior to enrollment may withdraw without penalty within three business days following either the regularly scheduled orientation procedures or following a tour of the College facilities and inspection of equipment where training and services are provided. All monies paid by an applicant must be refunded if requested within three (3) days after signing an enrollment agreement and making an initial payment. A refund will be issued within forty-five (45) days of the cancellation date. An applicant requesting cancellation more than three (3) days after signing an enrollment and making an initial payment, but prior to entering the College, is entitled to a refund of all monies paid, minus the \$75 registration fee.

Withdrawal from the Program

You may withdraw from the school at any time after the cancellation period (described above) and receive a pro rata refund for the current term if you have completed less than 60 percent of the scheduled days through the last day of attendance in that term. The refund will be less a registration fee, not to exceed \$75, and less any deduction for equipment not returned in good condition, within 45 days of withdrawal. If the student has completed more than 60% of the period of attendance for which the student was charged, the tuition is considered earned and the student will receive no refund.

For the purpose of determining a refund under this section, a student shall be deemed to have officially or unofficially withdrawn from a program of instruction when any of the following occurs:

1. The student notifies the institution of the student's withdrawal (official, voluntary withdrawal).
2. The institution terminates the student's enrollment for failure to maintain satisfactory progress, failure to abide by the rules and regulations of the institution, absences in excess of maximum set forth by the institution, and/or failure to meet financial obligations to the school (official, involuntary withdrawal).
3. The student has failed to attend classes for 14 consecutive calendar days (unofficial, involuntary withdrawal).
4. The student fails to return from a leave of absence (unofficial, involuntary withdrawal).

For the purpose of determining the amount of the refund, the date of the student's withdrawal shall be deemed the last date of recorded attendance. For the purpose of determining when the refund must be paid, the student's date of determination will be no later than 14 consecutive days from the student's LDA.

For programs beyond the current "payment period," if a student withdraws prior to the next payment period, all charges collected for the next period will be refunded.

If any portion of the tuition was paid from the proceeds of a loan or third party, the refund shall be sent to the lender, third party or, if appropriate, to the state or federal agency that guaranteed or reinsured the loan. Any amount of the refund in excess of the unpaid balance of the loan shall be first used to repay any student financial aid programs from which the student received benefits, in proportion to the amount of the benefits received, and any remaining amount shall be paid to the student. If the student has received federal student financial aid funds, the student is entitled to a refund of moneys not paid from federal student financial aid program funds.

The College participates in federal financial aid. For students who have received Title IV financial assistance, the Federal Return of Title IV Funds calculation (described below) will be completed first and applicable funds returned. Returned funds will be reduced from the payments received on behalf of the student before applying the institutional refund policy to determine whether the student is owed a refund or if a balance is owed to the College. If a balance is owed to the College, you will have to make arrangements to pay it.

Federal Return to Title IV (R2T4) Policy

A recipient of Federal Title IV financial aid who withdraws from school during a payment period or period in which the student began attendance will have the amount of Title IV funds he or she did not earn 35 calculated according to federal regulations (34 CFR 668.22). Any student who withdraws will have his/her Pell Grant recalculated based on the number of credits the student attempted.

A determination of the percentage of the payment period the student has completed, which is used to calculate the amount of Title IV financial aid the student has earned, will be based on the number of days the student completed up to the last date of attendance, divided by the total days in the payment period. Any break of 5 days or more is not counted as part of the days in the term.

The percentage is multiplied by the amount of Title IV financial aid for the payment period for which the Title IV financial aid was awarded to determine the amount of Title IV financial aid earned. The calculated amount of aid earned is rounded to the one-hundredth decimal. The amount of Title IV financial aid earned and the amount of Title IV financial aid not earned will be calculated based on the amount of Title IV financial aid that was disbursed or could have been disbursed for the payment period upon which the calculation was based. After the 60 percent point in the payment period, the student will have earned 100 percent of the federal financial aid funds already disbursed to him/her.

Once the amount of Title IV financial aid that was not earned has been calculated, federal regulations require that the school return a portion of the unearned funds equal to the lesser of the institutional charges multiplied by the unearned percentage of funds or the entire amount of unearned funds in the following order:

1. Unsubsidized Federal Stafford Loans
2. Subsidized Federal Stafford Loans
3. Federal PLUS Loans
4. Federal Pell Grants
5. Federal Supplemental Educational Opportunity Grants (FSEOG)
6. Other Title IV Programs
7. Student

If the amount of unearned Title IV financial aid disbursed exceeds the amount that is returned by the school, the student (or parent, if a Federal PLUS Loan) must return or repay, as appropriate, the remaining amount. Any loan funds that must be returned by the student (or parent for a PLUS Loan) are repaid in accordance with the terms and conditions of the promissory note. If the student is required to return unearned grant funds, the student is required to return the amount of the unearned grant funds that exceeds 50 percent of the grant funds received. If the amount disbursed to the student is less than the amount the student earned, he or she is eligible to receive a post-withdrawal disbursement (PWD) of the earned aid that was not received. The school will notify the student and/or parent of post-withdrawal disbursement once an amount can be determined (calculation is performed within 30 days from date of the institution's determination that the student withdrew). The school will offer any PWD that is due within 180 days of the date that the school determined that the student withdrew. The school must get the student's permission before it can disburse PWD loan funds (written notification provided to the student). The student may choose to decline some or all of the PWD loan funds. No PWD of loan funds will be made if the student does not respond within 30 days of the written notification date.

For the purpose of determining when the refund must be paid, the date of the institution's determination that the student withdrew should be no later than 14 days after the student's last day of attendance, as determined from the College's attendance records. Unearned funds will be returned within 45 days from date of determination.

Academic Transcripts

To request an official transcript of all courses you have previously registered with ATI COLLEGE, student must complete (include your signature) and return Form Academic Transcript Request to ATI COLLEGE, Attention: Student Services Department, Subject: Transcripts at 15141 Whittier Blvd., Suite 420, Whittier, CA 90603. If paying by credit card, you may submit request form via fax to (562) 864-7806. Otherwise, please include a check or money order made payable to ATI COLLEGE and send to address above. The cost for each official transcript is \$10.00. Please allow 5 to 10 working days for us to process your transcripts.

Rules and Policies

- **Professional Conduct of Student**

An important element of the training at ATI includes the development of professionalism. The high standards maintained in ATI programs prepare each student to meet the highest expectations of employers. College expects students to conduct themselves in a socially acceptable manner at all times. Students indulging in the following types of misconduct are subject to immediate dismissal:

- Any type of dishonesty, including cheating, plagiarism, knowingly furnishing false information to institution, forgery, alteration or use of institution identification documents with the intent to defraud.
- Intentional disruption or obstruction of teaching, administration, disciplinary proceedings, public meetings and programs, or other school activities.
- Physical or verbal abuse of any person on school premises or at school-sponsored or supervised functions.
- Theft of school property or damage to school premises or to the property of a member of the school community on the school premises.
- Failure to comply with directions of school officials acting in the performance of their duties.

- The use, possession, or distribution of alcoholic beverages, controlled substances, firearms, weapons, explosives and/or dangerous chemicals on school premises.
- Any violation of Federal, State or local law on ATI premises or at ATI sponsored functions.
- College views excessive tardiness as violation of the professional conduct philosophy that could lead to dismissal. Any violation or transgression will be strictly penalized. ATI reserves the right to make the administrative and educational decisions as to whether the code of conduct had been violated. All cases are reviewed individually.

- **Disciplinary Policy**

All students of ATI College are expected to conduct themselves in accordance with applicable laws, regulations, departmental policies and generally acceptable college behavior. The examples listed under the Professional Conduct of Student are to be used as a guide and are not intended to be all-inclusive. At the occurrence of any offense, the appropriate discipline shall be determined after the particular circumstances of the case have been carefully considered. Generally, students will be allowed three formal warnings as steps towards disciplinary actions and will be dismissed on the fourth offense. However, all terminations will be determined on an individual basis and certain offenses may result in immediate dismissal without warning.

- **Professional Dress Standards**

Important part of the training at the college includes the development of professional attitudes and behaviors. Prospective employers seek employees who will be positive additions to their companies. Therefore, we at ATI have created a “work-like” environment in which our students can grow and develop according to these professional expectations. Learning how to communicate and deal with different situations, coping with frustration, skills to solving problems, disciplining oneself and dressing professionally are just few of the ingredients that go into the makeup of a “professional”. In these areas we have high standards because we are committed to preparing our students for the highest expectations of our employers.

- **Maximum Number per Classroom & Laboratory Policy**

Maximum number of students to classroom and laboratory at all ATI College campuses is 15.

- **Student Information Updates**

It is student’s responsibility to notify the school when student information requires updating (i.e. new address, phone number, E-mail). No particular form is required when submitting these changes to the school. However, Student Information Update Form is recommended.

- **Special Instructional Assistance**

Individuals who have occasional difficulty with the study are urged to seek assistance from their instructor. Additionally, tutoring is available outside of normal class time. Contact the student service department at the school for more information.

- **Reinstatement Policy**

Terminated, dismissed or individuals out for personal reasons may be reinstated with an approval from the school director. After student has remained outside of school for at least six (6) months and has taken steps to meeting the SAP requirements in academic, personal, and any other critical situations, student may file *Reinstatement Request* for review. Conditions are determined and reviewed on individual basis. Please submit request in person or via fax to admissions department at 15141 Whittier Blvd., Suite 420, Whittier, CA 90603. Once reinstated, student’s financial aid may be reinstated when and if student satisfies the school SAP requirements.

- **Vaccination Policy**

Although ATI College does not have a universal student vaccination policy required of all students, the National Center for Disease Control recommends that all adults comply with the following vaccination schedule:

www.cdc.gov/vaccines/adults/rec-vac/index.html

- **Health and Safety Exemption Requirement**

ATI College adheres to all requirements pertaining to the protection of student information. However, there are limited exceptions to FERPA regulations under which ATI College is permitted to disclose education records or personally identifiable, non-directory information from education records in connection with a health or safety emergency without student consent. The situation must present imminent danger to a student, other students, or members of the school community in order to qualify as an exception. This action is not taken lightly and only under circumstances that present imminent danger.

- **Misrepresentation**

To ensure that the nature of educational programs is not misrepresented, such information including but not limited to the policies and procedures, program description, tuition information, and various financial aid information are delineated in this catalog and college website. All academic programs are reviewed as part of our institution's Program Advisory Committee Review process. Programs undergo a complete evaluation annually. Needs requests in various areas may be evaluated annually (personnel, facilities, equipment, supplies, technology).

- **Student Tuition Recovery Fund (STRF)**

The State of California established the Student Tuition Recovery Fund (STRF) to relieve or mitigate economic loss suffered by a student in an educational program at a qualifying institution, who is or was a California resident while enrolled, or was enrolled in a residency program, if the student enrolled in the institution, prepaid tuition, and suffered an economic loss. Unless relieved of the obligation to do so, you must pay the state-imposed assessment for the STRF, or it must be paid on your behalf, if you are a student in an educational program, who is a California resident, or are enrolled in a residency program, and prepay all or part of your tuition. You are not eligible for protection from the STRF and you are not required to pay the STRF assessment, if you are not a California resident, or are not enrolled in a residency program. It is important that you keep copies of your enrollment agreement, financial aid documents, receipts, or any other information that documents the amount paid to the school. Questions regarding the STRF may be directed to the Bureau for Private Postsecondary Education, 1747 North Market, Suite 225, Sacramento California 95834, (916) 431-6959 or (888) 370-7589. To be eligible for STRF, you must be a California resident or enrolled in a residency program, prepaid tuition, paid or deemed to have paid the STRF assessment, and suffered an economic loss as a result of any of the following:

1. The institution, a location of the institution, or an educational program offered by the institution was closed or discontinued, and you did not choose to participate in a teach-out plan approved by the Bureau or did not complete a chosen teach-out plan approved by the Bureau.
2. You were enrolled at an institution or a location of the institution within the 120 -day period before the closure of the institution or location of the institution or were enrolled in an educational program within the 120-day period before the program was discontinued.
3. You were enrolled at an institution or a location of the institution more than 120 days before the closure of the institution or location of the institution, in an educational program offered by the institution as to which the Bureau determined there was a significant decline in the quality or value of the program more than 120 days before closure.
4. The institution has been ordered to pay a refund by the Bureau but has failed to do so.
5. The institution has failed to pay or reimburse loan proceeds under a federal student loan program as required by law or has failed to pay or reimburse proceeds received by the institution in excess of tuition and other costs.
6. You have been awarded restitution, a refund, or other monetary award by an arbitrator or court, based on a violation of this chapter by an institution or representative of an institution, but have been unable to collect the award from the institution.
7. You sought legal counsel that resulted in the cancellation of one or more of your student loans and have an invoice for services rendered and evidence of the cancellation of the student loan or loans. To qualify for STRF reimbursement, the application must be received within four (4) years from the date of the action or event that made the student eligible for recovery from STRF. A student whose loan is revived by a loan holder or debt collector after a period of non-collection may, at any time, file a written application for recovery from STRF for the debt that would have otherwise been eligible for recovery. If it has been more

than four (4) years since the action or event that made the student eligible, the student must have filed a written application for recovery within the original four (4) year period, unless the period has been extended by another act of law.

However, no claim can be paid to any student without a social security number or a taxpayer identification number.

Other Fees and Charges

Description	Fees & Charges
Academic Transcript (official copy) – Current Student	\$10
Academic Transcript (official copy) – Grad Student	\$20
Completion Certificate Duplicate Copy Fee	\$50
Dishonored Check Charge (Charged to your account if your bank cannot honor any check you write to ATI COLLEGE)	\$50
Disputed Credit Card Fee	\$30
I-901 Fee (for F1/M1 international students only)	\$200
International Student Registration Service Fee (F1) (non-refundable)	\$500
International Student Dependent Registration Service Fee (F2)(non-refundable)	\$150
Professional Liability Insurance for Student	\$35/YR
Registration or Re-registration Fee (non-refundable; pay when you apply or reapply to ATI COLLEGE)	\$75
Student Identification Card (ID)	\$20
Parking Pass Replacement Fee	\$25
Domestic Express Mail (Form I-20, Government Forms, Agency Forms)	\$90
International Express Mail (Form I-20, Government Forms, Agency Forms)	TBA
Re-issue of Form I-20 Processing Fee	\$150
Airport Pickup Service	\$200
Housing Service	\$250
Document Fee (form verification, form completion)	\$100
Academic and/or Financial Aid File Copy (entire file)	\$30/file
Fees last modified on 10/01/2018	

ADMINISTRATORS**EDUCATION & PROFESSIONAL QUALIFICATIONS**

Katherine Cho
CEO/President

- University of TCM, Shenyang, China, Ph.D. in Traditional Chinese Medicine
- Royal University, Los Angeles, CA, MS in Acupuncture & Oriental Medicine

Lisa Jee
Executive Director
PDSO

- University of California, Los Angeles, Graduate School of Education & Information Studies, Ph.D. in Educational Psychology & Statistics
- California State University, Long Beach, College of Education, MA in Educational Psychology
- California State University, Long Beach, College of Education, BA in Liberal Studies

Tareq Nabulsi
Program Director

- Medical University of the Americas, Devens, MA, Doctor of Medicine
- University of California, Riverside, BA in Philosophy with Minor in Biology

Brian H. Kim
Program Director
Clinic Coordinator

- University of TCM, Shenyang, China, Ph.D. in Traditional Chinese Medicine
- Royal University, Los Angeles, CA, MS in Acupuncture & Oriental Medicine
- University of California Irvine, CA, Diploma in Anatomy and Neurobiology

Silvia J. Ramirez
Financial Aid Director

- Systems Programming and Development Ins., Los Angeles, CA, Certificate in Computer Programming

Julie Yang
Student Advisor
Externship Coordinator
Accounting

- Fashion Institute of Design & Merchandising, Los Angeles, CA, Fashion Design

Susana Espinoza
Registrar
Career Advisor

- Rio Hondo Community College, General Studies

Sungmin “Paul” Kim
Academic Advisor
Technical Advisor

- University of Utah, Salt Lake City, School of Medicine, MS in Public Health
- Yonsei University, Seoul South Korea, School of Medicine, BS in Occupational Therapy

Francisco Valle
Admissions Advisor

- University of Phoenix, BA in Business Administration

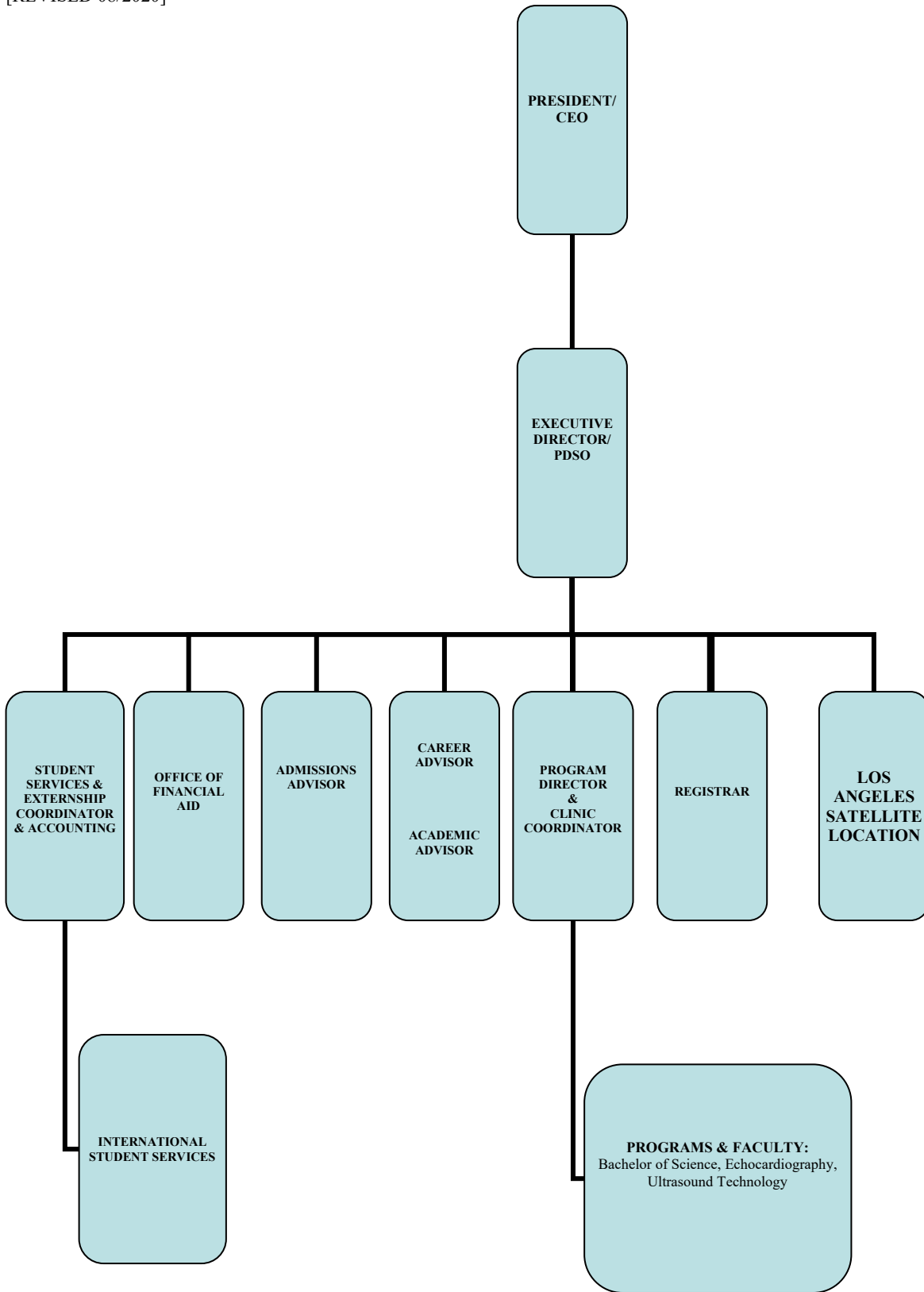
Jesse Valasco
Admissions Advisor

- Los Angeles ORT College, AAS in Business Management

FACULTY	EDUCATIONAL & PROFESSIONAL QUALIFICATION
<u>Mary Agaiby, M.D.</u>	<ul style="list-style-type: none"> ▪ University of Assuit Medical School, Egypt, M.D. ▪ Completion Certificate of General Diagnostic Sonography program, University of Assuit Medical School, Egypt ▪ Qena General Hospital, Qena, Egypt, General Medicine ▪ Sham El Sheilch Hospital, Sharm El Sheilch, Egypt, General Medicine ▪ Assuit General Hospital, Assuit, Egypt, General Medicine
<u>Magdy Khella, D.D.</u>	<ul style="list-style-type: none"> ▪ Alexandria University, Faculty of Dentistry, Alexandria, Egypt ▪ American Dental Association, National Board Dental Exam
<u>Mary Kongaika-Suliafu</u>	<ul style="list-style-type: none"> ▪ Ball Imaging, Anaheim, CA, Sonographer ▪ Prenatal Ultrasound of California, Monterey Park, CA, Sonographer ▪ ATI College, Norwalk, CA, Ultrasound Technology Program
<u>Taliko Tuladhar, M.D., RDMS, RVT</u>	<ul style="list-style-type: none"> ▪ Memorial Hospital, Gardena, California: Lead Ultrasound Technician ▪ ARDMS Registered Sonographer: Abdomen, Small Parts, OB/Gyn, RVT ▪ California School of Medicine, Ultrasound Technology Program, Certificate ▪ Riga Medical Academy, Latvia, General Medicine, M.D.
<u>Olivia K. Pouanga</u>	<ul style="list-style-type: none"> ▪ Prenatal Ultrasound of California, Monterey Park, CA, Sonographer ▪ Victoria Clinic, Huntington Park, CA, Sonographer ▪ ATI College, Norwalk, CA, Ultrasound Technology Program
<u>Claudia Sanchez, RVT</u>	<ul style="list-style-type: none"> ▪ Memorial Hospital of Gardena, California, Sonographer ▪ Cardio Beat Imaging Inc., Cypress, California, Sonographer ▪ ATI College, Norwalk, CA; Ultrasound Technology Program
<u>Hazem Armanyos, M.D., RDMS</u>	<ul style="list-style-type: none"> ▪ Medical Council of Canada, MCCEE, Medicine ▪ Faculty of Medicine, Ain-Shams University, Cairo, Egypt, MBBcH ▪ Faculty of Medicine, Cairo University, Cairo, Egypt, M.D. ▪ Medical Practice License, Egypt, License to practice Medical Profession ▪ Member of the Egyptian Medical Syndicate ▪ Member of the Kuwait Medical Association
<u>Suzanne Ibrahim, M.D., RCS, RDMS</u>	<ul style="list-style-type: none"> ▪ Ain-Shams University, Cairo, Egypt, M, Sc. Master's Degree in Pediatrics ▪ Ain-Shams University, Cairo, Egypt, MBBcH., Bachelor's degree in Medicine
<u>Kevin Gemme</u>	<ul style="list-style-type: none"> ▪ California State University, Los Angeles, CA, BS in Business Administration with minor in Management and Operations

Organization Chart

[REVISED 08/2020]



FINANCIAL AID

Financial Aid—Consumer Information

In an effort to assist the student in making a more educated decision about enrolling, the institution provides the following disclosures on its website and in this Catalog. Student is welcome to request for disclosures in person at the student services department.

California State

Institutional Performance Fact Sheet

Federal Disclosures

- Right- to- know Act. How are our students doing?
- Gainful Employment Disclosure
- Crime statistics report and procedures
- Constitution & Citizenship Day (Sept 17th)(This holiday marks the anniversary of the signing of the United States Constitution which took place on September 1787. For more information about the U.S. Constitution, visit:
<http://constitutioncenter.org/constitution-day>
<http://www.constitutionfacts.com>
<http://constitutioncenter.org/timeline>
- Drug and alcohol abuse policy
- FERPA
- Textbook disclosure
- GED Classes availability
- Copyright protection policy
- Admissions disclosure
- Voting Information

Financial Aid Mechanism

Financial aid is a mechanism that reduces out-of-pocket costs that the student and/or parents must pay to obtain a specific postsecondary education. Presented differently, financial aid is money made available to help students meet the cost of college attendance. Financial aid includes grants and loans. Grants do not have to be repaid. Loans usually have low interest rates that a student must repay in accordance to the individual loan program terms. Most of the loans can be arranged to require payment after a grace period of several months upon graduation, or upon the student's termination from the program or if a student's attendance falls below half time. Financial aid is awarded to students who have "need". Need is the difference between the amount of money that the family will be expected to contribute to meet student costs and the cost of education at this school.

If a student obtains a loan to pay for an educational program, the student will have the responsibility to repay the full amount of the loan plus interest, less the amount of any refund, and that, if the student has received federal student financial aid funds, the student is entitled to a refund of the moneys not paid from federal student financial aid program funds.

Compliance Statement

The Federal Privacy Act of 1974 requires that students be notified that the disclosure of his/her social security number is mandatory. The social security number is used to verify students' identities, to process the awarding of funds, the collection of funds, and the tracing of individuals who have borrowed funds from federal, state or private programs.

The U.S. Department of Education Title IV Student Financial Aid Programs

The college is approved for, and does participate in the following USDE Title IV programs intended to defray the costs of attending for those students eligible for financial aid considerations:

- **GRANT (FREE) AID - (This aid does not have to be repaid)**
 - Federal PELL Grant Program (FPELL) **\$6345 maximum annual limit** **(Does not require repayment)**
 - Federal Supplemental Educational Opportunity Grant Program (FSEOG)* **(Does not require repayment)**
- **LOANS TO STUDENT AND/OR PARENT** **(THIS AID MUST BE REPAID! THESE LOANS ARE NOT DISCHARGED BY BANKCRUPTY)**
 - Direct Federal Stafford LOANS
 - Subsidized loans (Interest earned while in school and during grace period is covered by the USDE)**.

- Unsubsidized loans (Interest earned while in school and during grace period may be delayed until the repayment period and will be added to the loan balance).**
- Parent loans (PLUS) (Interest due from parents as last disbursement on a loan is made)

STUDENTS ARE ENCOURAGED TO KEEP THEIR LOAN DEBT AS LOW AS POSSIBLE. THESE LOANS ARE AGGRESSIVELY COLLECTED BY THE USDE AND ITS CONTRACTORS. INTEREST LIABILITY ON LATE PAYMENTS IS VERY EXPENSIVE. LACK OF PAYMENT IS A VERY DAMAGING TO CREDIT HISTORY AND FUTURE BORROWING POWER.

(*) Funds are limited in nature; therefore awards are based on availability of funds at the school.

(**) Annual loan limits and based on educational levels within the course of enrollment.

Loan levels are specifically designated to the course of study at this institution. For example, if the student attended two years at a community college, but it enrolls in a course that is one academic year long without any transfer hours, the correct student level will be 1 and not 3rd loan level.

For more specific information on each program please refer to the student guides available at [Student Guide](#)

http://studentaid.ed.gov/students/publications/student_guide/index.html

[Direct Loan Basics for Students](#)

[Direct Loan Basics for Parents](#) PDF [Spanish version](#) PDF [3MB]

Student Eligibility Requirements

To be eligible for financial aid, a student must:

- Be admitted as a regular student;
- Be enrolled or accepted for enrollment in an eligible program;
- Be a citizen or an eligible non-citizen;
- Not owe a refund on a FPELL Grant or FSEOG at any school;
- Not be in default on a Perkins Loan or Stafford Loan/SLS/PLUS/Direct Loan at any school;
- Have financial need;
- Be making satisfactory progress (as defined by the school's policy) in the course of study;
- Be registered for selective service (if a male between the age of 18-25);
- Have signed a statement of educational purpose;
- Have signed a statement of updated information;
- Have a High School Diploma, (or its equivalent) a GED, or upon satisfaction of eligibility requirements to be determined by the Director of Admissions, have demonstrated the ability-to-benefit from Financial Aid;
- Agree to use any federal student aid received solely for educational purposes.

Application for Aid, Procedures & Forms

Financial aid applications for this institution consist of the following:

Free Application for Federal Student Aid (FAFSA) this form needs to be completed as instructed on the form. Documentation to substantiate the data entered on the form may be required by the financial aid office. Forms and assistance in completing them are available at this school during school hours. In addition to the FAFSA, the institution requires a series of forms as they apply to the individual student aid program and to the student's individual family circumstances.

Federal Pell Grant Program: Funds received under this program are not subject to repayment from the student.

Deadline: FAFSA applications must be received by June 30 in the year on which the application is intended for. SAR or ISIR must be submitted to the financial aid office by September 29, of the award year from which aid is requested from, or your last day of enrollment in **2019-2020**, whichever comes first. A valid ISIR requires signatures of student, spouse and/or parents, when the ISIR has been corrected.

Renewal Process: A FPELL Grant award is received for one award year (July 1 to June 30 of the following year), and **is not** automatically renewed for the next award year. Students must re-apply for the FPELL Grant and submit a copy of the **new** SAR or ISIR to the financial aid office for each award year.

Maximum Annual Award: \$6,345

Disbursement: They are made based on per payment period via a direct credit to the student's tuition account.

Federal Supplemental Educational Opportunity Grant (FSEOG)

Funds received under this program are not subject to repayment from the student.

Deadline: You may apply during the enrollment process, using the FAFSA form. The school will provide you a letter listing the amount and types of financial aid you will be awarded, including the FSEOG award.

Maximum Annual Award: \$4,000

Disbursement: Made based on per payment period via a direct credit to the student's tuition account. Priority for FSEOG funds will be given to students eligible for Pell Grant. This institution has a year-round enrollment. Therefore, funds will be awarded in a manner that funds would be available to students enrolling throughout the entire year. If SEOG funds are still available, a second priority will be given to Non-Pell recipient students with the lowest Expected Family contributions enrolled during the last three months.

Federal William D. Ford Direct Loan Program

Funds received from either of the loan programs are subjected to repayment from the student.

Before a loan document is submitted to the USDE, students must be fully aware of the financial responsibilities under these loan programs, the rights that the student has under the individual loan program conditions, and the consequences of failing to meet the repayment obligations.

Federal Direct Subsidized Loan

Federal Direct Subsidized Loans are made directly to students from the U.S. Department of Education. Subsidized loans are need based. Students may borrow up to the amount of the student's cost of attendance less other expected financial assistance (not to exceed annual loan limits).

The Federal Government pays interest subsidies while the student is enrolled or during periods of deferment. Student would pay a combined origination/guaranty fee of a variable percentage but not to exceed 3% rebated directly to the U.S. Department of Education. Students may receive both subsidized and Unsubsidized loans provided the combine amount borrowed does not exceed applicable loan limits and that the student's eligibility for a subsidized Federal Stafford Loan be determined prior to determining eligibility for the Unsubsidized loan. The law also stipulates that borrowers may apply for both subsidized and unsubsidized loans using a single application and that such borrowers must be given a single repayment schedule.

Maximum Annual Award: First level \$3,500, Second level \$4,500, Third level \$5,500 (Max aggregate \$23,000)

Federal Direct Stafford Unsubsidized Loan

These loans expand the ability of the U.S. Department of Education to make "Unsubsidized" Federal Stafford Loans to students. These loans carry many of the same terms and conditions associated with subsidized Federal Stafford Loans with the following two exceptions:

(1) Unsubsidized loans are not need based. Students may borrow up to the amount of the student's cost of attendance less other expected financial assistance (not to exceed annual loan limits).

(2) The Federal Government does not pay interest subsidies to the lender while the student is enrolled or during periods of deferment. Interest must be paid or capitalized, i.e., added to the principal.

Deadlines: Applications need to be submitted at least 30 days before the end of the loan period for which the loan has been requested. The student is responsible in locating his or her own lender that participates in the FFEL Loan Program.

Maximum Annual Award:

Dependent student: **with Parent** loan First level \$2,000, Second level \$2,000, Third level \$2,000 (Max aggregate \$8,000)

Dependent student **without Parent** loan or **independent** students: First level \$6,000, Second level \$6,000, Third level \$7,000 (Max aggregate \$14,000)

Disbursement: Checks are issued to the school and credited to the student's tuition account. It is the student's responsibility to submit all required forms and documentation to the financial aid office before disbursement.

For additional information, read the pamphlet "Direct loan Entrance Interview"

Determining Need

The information you report on the FAFSA form when you apply for aid, is used in a formula established by U.S. Congress that calculated your Expected Family Contribution.

ATI College utilizes the Free Application for Federal Student Aid (FAFSA) for students applying for aid. This form will be processed by a contractor of the U.S. Department of Education at no cost to the student. The results will be provided in the form of an Electronic Student Aid Report with the calculation of the Expected Family Contribution.

Cost of Attendance

This institution uses the annual budgets published by the CALIFORNIA STUDENT AID COMMISSION. The estimate amount it will cost a student to go to school during an academic year of approximately 8 months is stated below.

Elements included in the budget:	Tuition	Actual cost
	Registration Fee	Actual cost
	Books and supplies	Actual cost
Living cost allowance (monthly figures):	Student living w/parents	Student living off campus
Room and board	\$ 7,808	\$14,736
Transportation	\$ 816	\$ 760
Personal/misc.	\$ 2,864	\$ 3,360

(The cost of uniforms is included in the personal allowance or included in the school charges)

Award Concept, Selection of Recipients and Packaging Criteria

This institution does not receive enough Campus-Based funds to satisfy all the student financial needs. Therefore, the school emphasizes the **SELF-HELP CONCEPT** of student financial assistance. The **SELF-HELP CONCEPT** is on a first-come, first-served basis when awarding eligible applicants. If the student does not wish to assume the combined debt of two or more loans, they may decline any loans offered by the school. **ALL LOANS MUST BE REPAYED.**

The **SELF-HELP CONCEPT** lists types of financial assistance in the following order:

1. Family contributions
2. Other resources
3. Federal PELL Grant
4. Self Help (Stafford and/or, PLUS Loans)

The school awards from the Federal Supplemental Educational Opportunity Grants in accordance with the following policy: The institutional participation in the Federal Educational Opportunity Grant is limited to the amount of funds given to the institution for an entire award year (July 1 to June 30).

Due to the **limited** amount of funds available to the institution, it is literally impossible to award FSEOG to all students applying for aid. Therefore, the institutional policy to select FSEOG recipients is as follows: In order to ensure a fair distribution of funds through the entire award year, the institution will make SEOG awards using data from the year presiding the current year, by using student enrollment, EFC and Pell Grant data to determine how to distribute the SEOG funds available.

Based on last year's data, the institution expects an enrollment of 66 new students meeting the "exceptional need" criteria to be enrolled during the 7/1/19 to 6/30/20 period. Therefore, the awards to those students will be \$200 through the entire period. At the beginning of the award year, the first selection of SEOG recipients will be made from students with "exceptional need". Students with "exceptional need" are defined by this institution as students that have an expected family contribution (EFC) of Zero (00000) that will otherwise be eligible for the FPELL Grant Program during the same award year. If enrollment figures change, and/or additional funds become available to the institution, a second selection will be made from those students ineligible for the FPELL Grant Program with the lowest expected family contribution that enrolled during the last quarter of the award year (March to June). Both selections will be made from students, whose file has been completed, with no issues pending regarding the students' eligibility for Federal Aid. Incomplete files will not be considered in the selection criteria due to possible lack of documentation. Awards will be made as long as funds are available throughout the award year.

Definitions related to Financial Aid

The following definitions correspond to some common terms used within the financial aid terminology:

- **ACADEMIC YEAR:** A period of not less than 26/30 weeks of instructional time with a minimum of 900 clock hours/24 Semester credit hours/36 Quarter credit hours of instruction for a full time student. The midpoint of the academic year shall be a minimum of 13/15 weeks and at least 450 clock hours/12 semester credit hours/36 quarter credit hours. In effect, all students enrolled in courses with an academic year scheduled to be completed in less than 26/30 weeks, regardless of the number of clock hours/Semester credit hours/Quarter Credit Hours offered, would have aid eligibility reduced in proportion to the number of weeks and hours in the course of study in relation to the academic year.
- **CLOCK HOUR:** A period of 50 to 60 minutes of supervised instruction during a 60 minute time period.
- **COST OF ATTENDANCE:** Institutional charges for tuition, fee, books and supplies in addition to an estimated cost to the student for living allowances as room, board, transportation and personal combined compose the cost of attendance for an academic year or less as the cost of attendance or educational budget.
- **CREDIT BALANCE:** A credit balance occurs when tuition payments using Title IV funds have been received by the institution in excess of the amount of charges assessed to the student. Credit balances are paid within 14 business days

from the day the credit balance was generated. Students must be responsible for budgeting their own funds and for securing that the funds are used for education related expenses.

- **DEPENDENT STUDENT:** She/he is an individual that does not meet the independent student criteria. This student is required to submit with his/her application, student and parents' income and assets data.
- **DEPENDENT:** She/he is an individual other than the spouse that has been supported and will continue to be supported (50% or more of that individual personal expenses) by the student and/or spouse. If that individual is and will continue to be supported by the student parent(s), that individual would be a dependent of the parent(s) **NOT** a dependent of the student.
- **EXPECTED FAMILY CONTRIBUTION (EFC):** Is the application of the U.S. Congressional formula to the student's family income and assets entered in the FAFSA and used as the calculated amount that a family is expected to contribute to offset the student cost of attendance.
- **FINANCIAL AID ELIGIBILITY CITIZEN/ELIGIBLE NON-CITIZEN:** You must be one of the following to receive federal student aid:
 - U.S. Citizen
 - U.S. National
 - U.S. permanent resident who has an I-551 or I-551C (Alien Registration receipt card).
 - Arrival Departure Record (I-94) from the Department of Homeland Security showing one of the following designations:
 - Refugee
 - Asylum Granted
 - Parole for a minimum of one year that has not expired
 - T-Visa holder (T-1, T-2, T-3etc)
 - Cuban-Haitian entrant
 - Holder of a valid certification or eligibility letters from the Department of Human Services showing a designation of "Victim of Human Trafficking"

IF YOU ARE IN THE U.S. UNDER ONE OF THE FOLLOWING CONDITIONS, YOU ARE NOT ELIGIBLE FOR FEDERAL AID:

- F1 or F2 student visa
- J1 or J2 exchange visitor visa only
- G series visa (pertaining to international organizations)
- **INDEPENDENT STUDENT:** An individual who meets one of the following criteria:
 1. 46. Were you born before January 1, 1995?
 2. 47. As of today, are you married? (Also answer "Yes" if you are separated but not divorced.)
 3. 48. At the beginning of the 2018-2019 school year, will you be working on a master's or doctorate program (such as an MA, MBA, MD, JD, PhD, EdD, graduate certificate, etc.)?
 4. 49. Are you currently serving on active duty in the U.S. Armed Forces for purposes other than training?
 5. 50. Are you a veteran of the U.S. Armed Forces?
 6. 51. Do you now have or will you have children who will receive more than half of their support from you between July 1, 2018 and June 30, 2019?
 7. 52. Do you have dependents (other than your children or spouse) who live with you and who receive more than half of their support from you, now and through June 30, 2019?
 8. 53. At any time since you turned age 13, were both your parents deceased, were you in foster care or were you a dependent or ward of the court?
 9. 54. As determined by a court in your state of legal residence, are you or were you an emancipated minor?
See Notes page 10.
 10. 55. Does someone other than your parent or stepparent have legal guardianship of you, as determined by a court in your state of legal residence?
 11. 56. At any time on or after July 1, 2017, did your high school or school district homeless liaison determine that you were an unaccompanied youth who was homeless or were self-supporting and at risk of being homeless?
 12. 57. At any time on or after July 1, 2017, did the director of an emergency shelter or transitional housing program funded by the U.S. Department of Housing and Urban Development determine that you were an unaccompanied youth who was homeless or were self-supporting and at risk of being homeless?
 13. 58. At any time on or after July 1, 2017, did the director of a runaway or homeless youth basic center or transitional living program determine that you were an unaccompanied youth who was homeless or were self-supporting and at risk of being homeless?

- **PARENT(S):** For the purposes of the financial aid programs, “a parent” is the biological mother and/or father or adoptive parents, and stepparent. Grandparents, foster parents, legal guardians, older brothers or sisters, and aunts and uncles are not considered parents unless they have legally adopted you.
- **PAYMENT PERIOD:** 450 clock hours and 13 weeks for courses of 900 hours and 26 instructional weeks or more. It is the mid-point of the program for courses of less than 900 hours and 26 weeks.
- **PROFESSIONAL JUDGMENT:** Professional judgment is applied on a case-by-case basis after individual review of the student's situation. Generally professional judgments are limited to financial or personal situations which arise that were beyond the student's control. The student is required to submit a written statement explaining in detail the students' current situation and supporting documentation to substantiate a change in status, household size or income. The information is then analyzed and documented in the students file, the FAO then makes the necessary adjustments to reflect the students' current situation.
- **Dependency Overrides:** Financial aid administrators have the authority, through Section 480(d)(7) of the Higher Education Act, to change a student's status from dependent to independent in cases involving unusual circumstances. When a student informs the Financial Aid Office of such circumstances the financial aid office will request proof from the student to document the file and will analyze all proof to make the determination, the FAO will request written statement explaining the unusual circumstances in detail from the student, one from an adult relative, and one from a third party e.g., teacher, counselor, church pastor. We have identified circumstances that do merit a dependency override. These can include the following:
 1. An abusive family environment (e.g., sexual, physical, or mental abuse or other forms of domestic violence)
 2. Abandonment by parents
 3. Incarceration or institutionalization of both parents
 4. Parents lacking the physical or mental capacity to raise the child
 5. Parents whereabouts unknown or parents cannot be located
 6. Parents hospitalized for an extended period
 7. An unsuitable household (e.g., child removed from the household and placed in foster care)
 8. Married student's spouse dies or student gets divorced
 9. Violence, including physical abuse against the children or the spouse.
 10. Sexual abuse.
 11. Emotional abuse.
 12. Use of abusive language, including name-calling.
 13. Failure to properly clothes or feed the family.
 14. Attempts to commit suicide by one or more family members.
- **NEED:** Financial need is the amount left over after subtracting the expected family contribution from your cost of attendance.
- **WITHDRAWALS:** Students are officially withdrawn on date of notification, date terminated by the institution, date of three consecutive weeks of absences or date when the student failed to return from an approved leave of absence.

Recoveries

Recoveries resulting from unearned Title IV funds are due from the student and must be paid in accordance to the terms stated in the promissory note of the student loans. If funds from the grants programs are still due from the student, those funds are payable at the rate of 50%. Grant funds due from the student must be repaid within 45 days from the student's withdrawal date. Students may make repayment arrangements with the U.S. Department of Education within the 45 days and present proof of such arrangements to the institution. If no repayment is received nor arrangements are presented, the institution will refer the debt to the U.S. Department of Education. The student will no longer be eligible for aid until informed by the U.S. Department of Education.

Refunds

If any refunds are due based on the Return of Title IV calculation or the institutional refund policy calculation, any refunds will be made as soon as possible but not later than 45 days from the determination of withdrawal date in the order stated in section CFR 34 section 668.22. The order of payment of refunds is 1) Unsubsidized Loans from FFELP or Direct Loan, 2) Subsidized Loans from FFELP or Direct Loan, 3) Perkins Loans, 4) PLUS (Graduate Students) FFELP or Direct Loan, 5) PLUS (Parent) FFELP or Direct Loan, 6) Pell Grant, 7) Academic Competitiveness Grant (ACG), 8) National SMART Grant, 9) Federal SEOG. This order would apply in accordance to the aid programs available at the institution.

Transfer Student

A student, who attended a Post-secondary institution before the enrollment at ATI College is required to provide academic transcript(s) from each of the institutions attended within the last six months before the enrollment at this institution

Verification Process

Federal regulations 34 C.F.R. Part 668, Subpart E, dated March 14, 1986 April 29, 1994, November 29, 1994 - executing legislation 20 U.S.C. 1094 governing the title IV programs require schools to be sure of certain applicant-reported data.

These regulations require schools to develop written policies and procedures for verification. The school is required to make these policies available to all applicants for financial aid, as well as prospective students upon request. This procedure is part of the Admissions and Counseling process.

To follow the regulations and achieve consistency governing this process, the following verification policies apply to all applicants for Title IV programs.

Under the regulations, the school will not disburse FPELL or Campus-Based aid, nor certify Stafford/PLUS loan applications, until completion of verification process.

- **WHO MUST BE VERIFIED:** The policy of this school shall be to verify those students selected by the need analysis (ISIR) system for verification.
- **VERIFICATION EXCLUSIONS:** Applicants excluded from verification include:
 - Death- Applicant dies during the award year or before the deadline for completing the verification.
 - Incarceration- Applicant is incarcerated at the time the verification is to be performed.
 - Certain immigration status- Applicant arrived in the U.S. during calendar years 2017-2018.
 - Certain spouse/parent status: - Spouse or parent information is not required to be verified if the spouse or the parent is deceased, or physically incapacitated, or residing in a country other than the United States and cannot be contacted by normal means, or can not be located because the address is unknown and can not be obtained by the applicant.
 - Completed verification- If the student completed the verification at another institution prior to transferring to this school if all the following documents are provided from that school:
 - Letter stating that the verification process was completed
 - Copy of the application data that was verified, and
 - If the student was awarded FPELL Grant, a copy of the signed SAR/ISIR.
 - A completed Financial Aid transcript.
 - Pacific Island residency status- Legal residents of the Trust Territory of the Pacific Islands, Guam, Samoa, and the Commonwealth of the Northern Mariana Islands. To qualify for this exclusion the parents of a dependent student must also be legal residents of one of these territories. Citizens of the Republic of the Marshall Islands, the Federated States of Micronesia or the Republic of Palau. To qualify for this exclusion the parents of a dependent student must also be citizens of one of these territories. To document the basis for this exclusion, the applicable permanent mailing address
 - No funds disbursed- The applicant will not receive federal aid funds,
- **REQUIRED VERIFICATION ITEMS:** Examine the data items listed in 34 C.F.R. 668.56. Different data items apply to different applicants depending upon student dependency status and the Title IV programs used.
Data items include:
 - Total number of persons in the household.
 - The number of members of household enrolled at least half-time students in postsecondary educational institutions.
 - High School completion status
 - Identity/Statement of Educational Purpose
 - Adjusted gross income (AGI) or adjusted gross family income (AGFI) for the base year (2018 and 2019).
 - U.S. income tax paid for the base year (2018 and 2019).
 - Certain untaxed income and benefits for the base year if certain conditions would apply include:
 - Social Security benefits
 - Child support
 - Untaxed payments to IRA or Keogh
 - Foreign income
 - Earned income credit
 - Education Credit
 - Interest on tax free bonds
 - Supplemental Nutrition Assistance Program (SNAP, formerly food stamps)

The school shall resolve inconsistent application information for all applicants, in agreement with requirements of 34 C.F.R. Part 688.16(f).

- **DOCUMENTATION REQUIRED:** Student, spouse and/or parents (as applicable) are encouraged to use the IRS Data Retrieval tool when completing the FAFSA. For those selected for verification and were not able to use this tool, they are

required to submit a copy of the IRS Income Tax Transcript. Signed income tax forms (IRS 1040, 1040A, or 1040EZ 1040Telefile and W-2 forms) are only allowed under special circumstances as determined by Financial Aid. Applicants shall complete the appropriate sections of the **Verification Worksheet 2019-2020 and 2020-2021**. There are two different worksheets: One for dependent students and one for independent students. Use the worksheets to update and for verification of data. Applicants shall follow the instructions in the Verification Worksheet. The school's financial aid officer may require/provide other appropriate forms.

- **TIME PERIOD FOR PROVIDING DOCUMENTATION:**
Applicants must provide the required documentation within 30 days from the start date.
- **APPLICANT RESPONSIBILITIES:** To be eligible to receive Title IV funds, we require applicants to provide requested information during the time period(s) specified in these policies. Applicants must certify that the following data items are correct as listed on the original application; or, if not correct, must update the data items, as of the date of verification:
 - * Number of family members in the household
 - * Number of family members in the household now enrolled as at least half-time students on postsecondary institutions.
 - * Change in dependency status.

Federal PELL Grant applicants whose dependency status changes during the Award Year must file a correction application. This process does not apply if the change occurs due to marriage.

Campus-based applicants whose dependency status changes during the Award Year must have their EFC recalculated. This process does not apply if the change occurs due to marriage. The applicant must repay any over award, or any award, discovered during verification, for which he/she was not eligible.
- **CONSEQUENCES OF FAILURE TO PROVIDE DOCUMENTING WITHIN THE SPECIFIED TIME PERIOD(S):** If the student cannot provide all required documentation, the school cannot complete the verification process within 30 days from the date of the request. The school must then advise applicants that they are not eligible for financial aid funds. The school then gives the applicants the following options:
 - The student may continue training on a cash payment basis.
 - The student may withdraw, and re-enroll at no additional charge. There will be no loss of credit earned, when the student provides all proof, and verification is complete.
 - The applicant must repay any over award or any award for which he/she was not eligible, discovered during verification.
- **INTERIM DISBURSEMENTS:** The school may not make any interim disbursements. The student must complete verification before disbursement of any Title IV funds.
- **TOLERANCES:** If there are non-dollar errors and if the errors in dollar items total less the \$400, there is no requirement to recalculate the students EFC.
- **NOTIFICATION OF RESULTS OF VERIFICATION:** The school shall notify the applicant of the results of the verification process within 30 days of the student's submission.
- **REFERRAL PROCEDURE:** The school shall forward to the Secretary of Education, referral of fraud cases.

Copyright Infringement Policy

Copyright Infringement - Summary of Civil and Criminal Penalties for Violation of Federal Copyright Laws.

Copyright infringement is the act of exercising, without permission or legal authority, one or more of the exclusive rights granted to the copyright owner under section 106 of the Copyright Act (Title 17 of the United States Code). These rights include the right to reproduce or distribute a copyrighted work. In the file-sharing context, downloading or uploading substantial parts of a copyrighted work without authority constitutes an infringement.

Penalties for copyright infringement include civil and criminal penalties. In general, anyone found liable for civil copyright infringement may be ordered to pay either actual damages or “statutory” damages affixed at not less than 4750k and not more than \$30,000 per work infringed. For “willful” infringement, a court may award up to \$150,000 per work infringed. A court can, in its discretion, also assess costs and attorneys’ fees. For details, see title 17, United States Code, Sections 504 and 505.

Willful copyright infringement can also result in criminal penalties including imprisonment of up to five years and fines of up to \$250,000 per offense. For more information, please see the website of the U.S. Copyright Office at www.copyright.gov.

Peer-to-Peer File Sharing

Peer-to-Peer (P2P) file sharing is a general term that describes software programs that allow computer users, utilizing compatible P2P software, to connect with each other and directly access digital files from one another’s hard drives. Many copyrighted works may be stored in digital form, such as software, movies, videos, photographs, etc. Through P2P file sharing it has become increasingly easy to store and transfer these copyrighted works to others, thus increasing the risk that users of P2P software and file-sharing technology will infringe the copyright protections of content owners.

If P2P file-sharing applications are installed on your computer, you may be sharing someone else’s copyrighted materials without realizing you are doing so. As a user of the college network, recognizing the legal requirements of the files that you may be sharing with others is important. You should be careful not to download and share copyrighted works with others. The transfer and distribution of these works without authorization of the copyright holder is illegal and prohibited.

BUSINESS and PROFESSIONS CODE SECTION 4611

(a) It is an unfair business practice for a person to do any of the following:

- (1) To hold himself or herself out or to use the title of “certified massage therapist” or “certified massage practitioner,” or any other term, such as “licensed,” “certified,” “CMT,” or “CMP,” in any manner whatsoever that implies or suggests that the person is certified as a massage therapist or massage practitioner, unless that person currently holds an active and valid certificate issued by the council pursuant to this chapter.
- (2) To falsely state or advertise or put out any sign or card or other device, or to falsely represent to the public through any print or electronic media, that he or she or any other individual is licensed, certified, or registered by a governmental agency as a massage therapist or massage practitioner.

(b) In addition to any other available remedies, engaging in any of the prohibited behaviors described in subdivision (a) constitutes unfair competition under Section 17200.

Availability of Administrators for Information Dissemination Purposes

ATI College is required to designate an employee or group of employees to assist enrolled or prospective students in obtaining all of the information specified below. If the College has designated one person for an area of responsibility, that person shall be available, upon reasonable notice, to any enrolled or prospective student throughout the normal administrative working hours listed. If more than one person, often an entire office, is designated, their combined work schedules have been arranged so that at least one of them is available, upon reasonable notice, throughout the normal administrative working hours listed.

Availability of Employees for Information Dissemination Purposes:

Subject Matter	Telephone No.	Office	Office Hour	Email
Institutional and federal financial aid information	(562) 864-0506, Extension 102	Financial Aid	MON-FRI 8:30am – 5:30pm	fadirector@ati.edu
Employee Information	(562) 864-0506, Extension 104	Executive Director	MON-FRI 10 am - 7 pm	lisa@ati.edu
Accreditation, Approval and Licensure of Institution and Programs	(562) 864-0506, Extension 104	Executive Director	MON-FRI 10 am - 7 pm	lisa@ati.edu
Students with Disability	(562) 864-0506, Extension 103	Student Services	MON-FRI 8:30am – 5:30pm	Julie@ati.edu
Gainful Employment Information	(562) 864-0506, Extension 101	Career Advising	MON-FRI 8:30am – 5:30pm	Susana@ati.edu
Campus Crime and Safety, Campus Safety and Security Information	(562) 864-0506, Extension 104	Executive Director	MON-FRI 10 am - 7 pm	lisa@ati.edu
Admissions/Readmissions	(562) 864-0506, Extension 103 (562) 864-0506, Extension 101	Student Services Admissions	MON-FRI 8:30am – 5:30pm	Julie@ati.edu Susana@ati.edu Francisco@ati.edu Jesse@ati.edu
Graduation/Retention Rates	(562) 864-0506, Extension 101 (562) 864-0506, Extension 104	Career Advising Executive Director	MON-FRI 8:30am – 5:30pm	Julie@ati.edu Susana@ati.edu
International Students	(562) 864-0506, Extension 103	Student Services	MON-FRI 8:30am – 5:30pm	julie@ati.edu lisa@ati.edu

Entire office's, as indicated above, are designated for each item listed. Combined work schedules have been arranged so that at least one person is available, upon reasonable notice, throughout the normal administrative working hours listed.

Otherwise, inquiries should be directed to:

Dr. Lisa Jee
Executive Director
lisa@ati.edu
(562) 864-0506

Establishing, Maintaining, and Safeguarding of ATI College's Information Security Program

Students have a right to know that their information is being kept in a secure environment that meets State and Federal standards.

ATI College carefully protects all nonpublic personal information in our possession regarding students and their families. The College will not release nonpublic, private, personal, or financial information about our students or applicants to any third party, except as specifically provided in this policy. The School will release certain nonpublic personal information to federal and state agencies, government contractors, student loan providers/servicers, and other parties as necessary for the administration of the federal student aid programs, for enforcement purposes, for litigation, and for use in connection with audits or other investigations. Disclosure is permitted to law enforcement or emergency services agencies in the performance of their duties or when student safety or health may be in jeopardy. The College will not sell or otherwise make available personal information for marketing purposes to any third party at any time.

The College employs office procedures and password-protected computer systems to ensure the security of paper and electronic records. The College does not disclose specifics of its internal security procedures to students or the general public to protect the effectiveness of those procedures. Access to social security numbers and other Personally Identifiable Information (PII) is strictly limited to those School Officials with a need-to-know. Each personnel are responsible for enforcement of this policy with regard to the information within his/her office. The Executive Director will be responsible for overall control of information release and will resolve any disagreements and make final decisions as necessary in accordance with this Policy.

ATI College's information is an important asset that is critical to providing an effective and comprehensive learning environment, openly communicating ideas, providing outstanding community service, and supporting the college's operations. This information includes sensitive and personal student, faculty, and staff data as well as the college's operational data. To maintain effectiveness and protect individuals, the college's information assets must be protected from misuse, unavailability, destruction, and unauthorized disclosure or modification.

The executive leadership of ATI College is committed to protecting the value of the college's information assets. The Executive Director is charged with establishing and maintaining a program that preserves the confidentiality, integrity, and availability of information and information systems. This responsibility is addressed by:

- ^Continually assessing risks and defining appropriate protection strategies
- ^Complying with applicable legal and regulatory requirements
- ^Protecting the reputation, image and competitive advantage of the college
- ^Supporting College's strategic mission and goals
- ^Maintaining partnership with administrative units, faculty, and staff to ensure a collaborative approach to information security

The members of ATI College in its entirety are responsible for the safeguarding of its information assets. Any suspected information security breach or issue should be reported immediately to the Executive Director's attention.

FORMS

- Request for Transfer Credit Evaluations
- Notice of Intent to Transfer
- Notice of Intent to Repeat a Course
- Application for Educational Leave (LOA)
- Transcript Request Form
- Completion Certificate (copy) Request Form
- Verification of Enrollment Request Form
- Student Information Update Form
- Reinstatement Request Form